

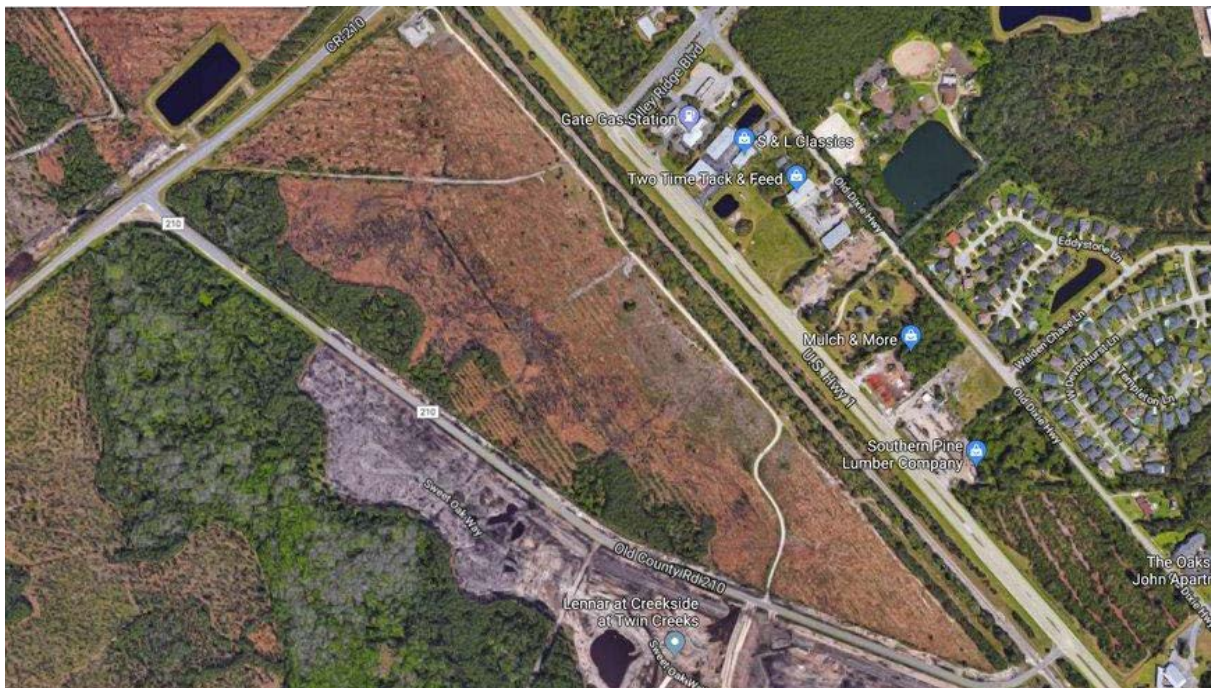
## Light industrial park planned in Twin Creeks

**89-acre site will be for St. Johns School District bus depot, development office and other uses.**

By Jay Schlichter  
November 20, 2018

Twin Creeks developer John Kinsey plans to build an light industrial park on the southwest corner of County Road 210 and U.S. 1 in St. Johns County, with a portion of the 89-acre property allocated for a St. Johns County School District bus depot.

Site plans submitted Nov. 16 to the St. Johns River Water Management District show proposals to construct a new master stormwater management facility and modify an existing facility to serve the industrial park.



The park is part of the master planned mixed-use Twin Creeks development, which includes the large Beachwalk neighborhood under construction directly north of this proposed project.

Plans show that almost 14 acres would be used for Twin Creeks Development Associates, 10 acres for the St. Johns County School District, 2.5 acres for a proposed JEA tract, 4.7 acres for a “future RV storage tract,” and the remaining listed as “future development.”

Christina Langston, chief of community relations for the school district, said Tuesday that the Twin Creeks Development group provided the 10-acre parcel to the district for a bus depot, classified as “ancillary transportation” uses.

Kinsey and other Twin Creeks officials did not respond to requests for comment.