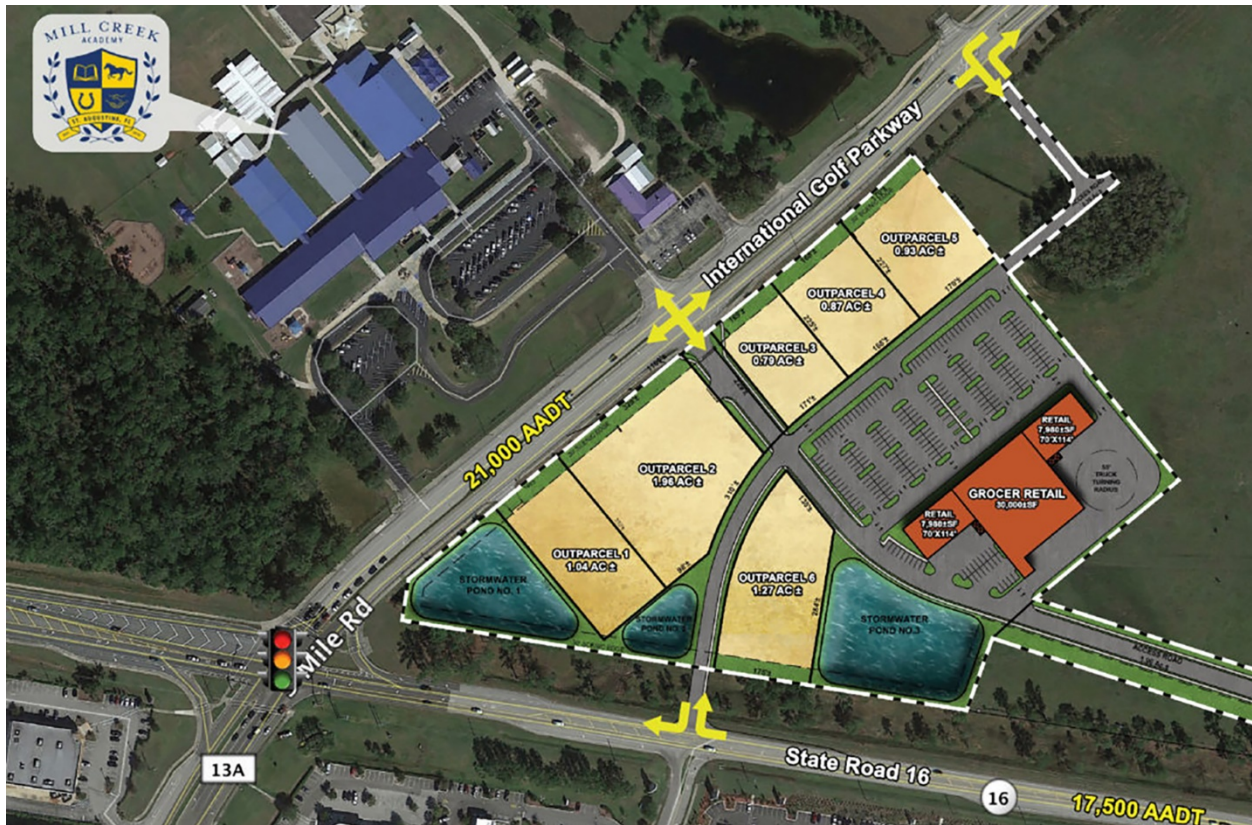


Construction to start in first quarter for Greenwise Market

The Parkway Shoppes at World Commerce Center is at northeast International Golf Parkway and Florida 16, west of Interstate 95.

By Karen Brune Mathis
October 11, 2019



Jacksonville-based Cantrell & Morgan and South Florida-based Stiles said this week they will start construction in the first quarter on Parkway Shoppes at World Commerce Center, which will be anchored by GreenWise Market.

GreenWise will open a 25,000-square-foot store in 2021 to anchor the almost 40,000-square-foot retail center, which is in St. Johns County.

GreenWise is the Publix Super Markets Inc. banner that sells specialty, natural and organic brands.

The developers plan another 15,000 square feet of inline retail shops and several outparcels.

The Parkway Shoppes at World Commerce Center is at northeast International Golf Parkway and Florida 16, west of Interstate 95.

In 2009, Stiles developed The Shoppes at Murabella, a Publix-anchored, 77,500-square-foot retail center nearby at Florida 16 and Pacetti Road. Stiles continues to own and operate that center.

Ryan Karlin, president of Stiles Retail Group, said in a news release that Stiles established roots in the market more than a decade ago with the Murabella project.