

CR 2209

Preliminary Engineering Study

North-South Corridor



St. Johns County, Florida

Presentation to County Commissioners

January 24, 2006

LEGEND

- RURAL CENTER DISTRICT
- COMMUNITY CENTER DISTRICT
- BIODIVERSITY CORRIDOR
- COASTAL CORRIDOR
- SCHOOLS
- CONNECTED HOUSING DISTRICT
- WETLANDS
- NATIONAL HISTORIC LANDMARK
- WILDLIFE CORRIDOR
- DEVELOPMENT AREA BOUNDARY
- INTERSTATE THRUWAY
- PRINCIPAL ARTERIAL
- MINOR ARTERIAL
- MAJOR COLLECTOR

The logo for Reynolds, Smith and Hills, Inc., consisting of the letters "RS&H" in a stylized, blue, bold font.

Reynolds, Smith and Hills, Inc.

Project Location

- **Project Purpose**
 - **Traffic reliever to I-95**
 - **Integrate road with the Northwest Sector Plan**
 - **Connect Racetrack Road to CR 208**
- **Study Objective**
 - **Evaluate alternative alignments within the corridor and select a preferred alignment**
 - **Provide the County with Right-of-Way Maps**



Board of County Commissioners Presentation (9-13-05)

Requested Actions:

- **Adopted Alternative 4**
- **Adopt Following Criteria**
 - **Proposed Rural Typical Section**
 - **60 MPH Design Speed**
 - **Access Management Class 3**
 - **12-Foot Multi-use Path**
 - **250-Foot Right-of-Way**

Alternative 4



LEGEND

	RURAL CENTER DISTRICT
	COMMUNITY CENTER DISTRICT
	MIXED USE COMMERCIAL CENTER DISTRICT
	COMMUNITY CENTER DISTRICT
	SCHOOL
	UNSETTLED HILL AND STREAM
	WETLAND
	STATIONARY WETLAND FEATURE
	WETLAND FEATURE
	DEVELOPMENT AREA BOUNDARY
	INTERSTATE FREEWAY
	PRINCIPAL ARTERIAL
	MINOR ARTERIAL
	MAJOR COLLECTOR

Major Stakeholder Involvement

- Johns Creek
- SilverLeaf
- Pacetti
- World Commerce Center
- Palm Lakes
- Star 4



LEGEND

	RURAL CENTER DISTRICT
	COUNTY CENTER DISTRICT
	MIXED USE COMMERCIAL CENTER DISTRICT
	COUNTY CENTER DISTRICT
	SCHOOLS
	UNPLATTED WELL-SERVED AREA
	WETLANDS
	STATIONED WETLAND ENVIRONMENT
	WILDLIFE CORRIDOR
	DEVELOPMENT AREA BOUNDARY
	INTERSTATE FREEWAY
	PRINCIPAL ARTERIAL
	MINOR ARTERIAL
	MAJOR COLLECTOR

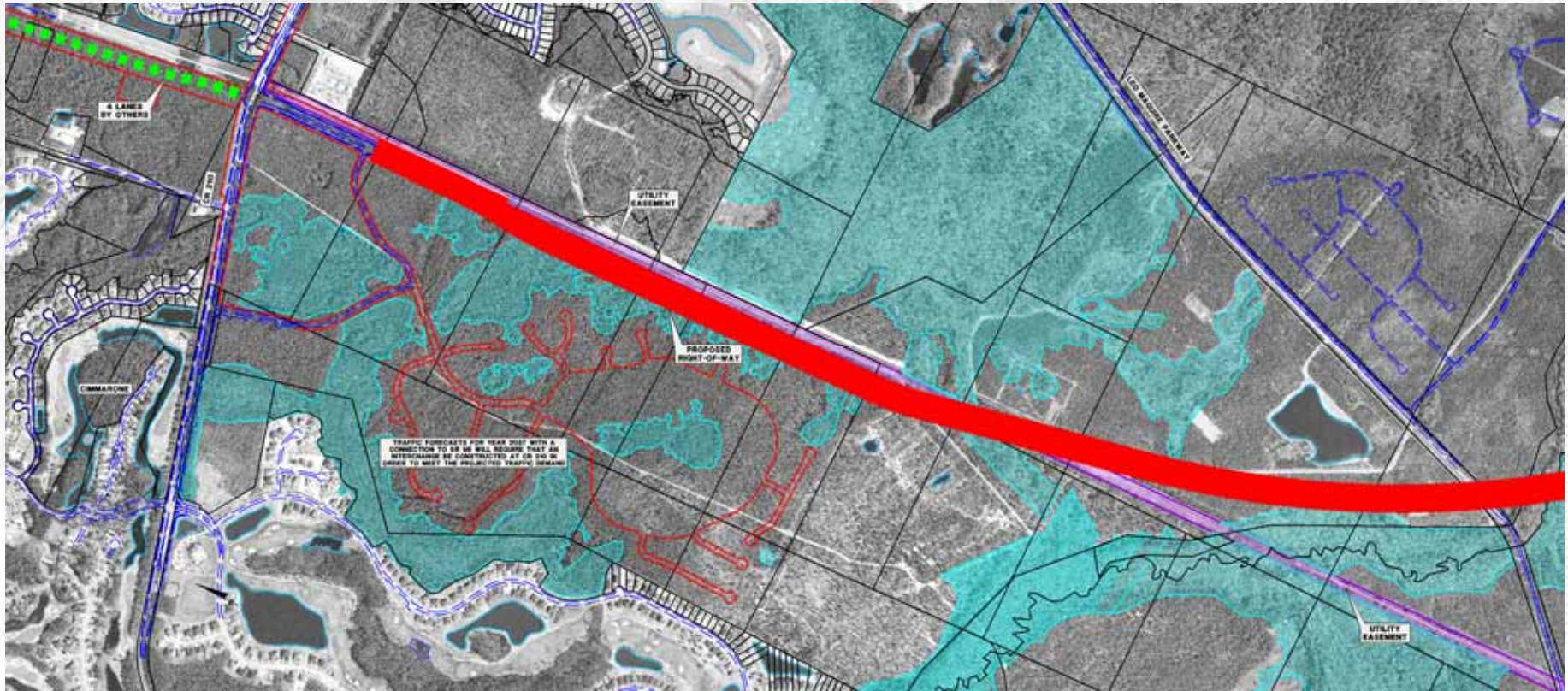
Consensus Alignment



	Original Recommendation (Alternative #4)
	Consensus Alignment

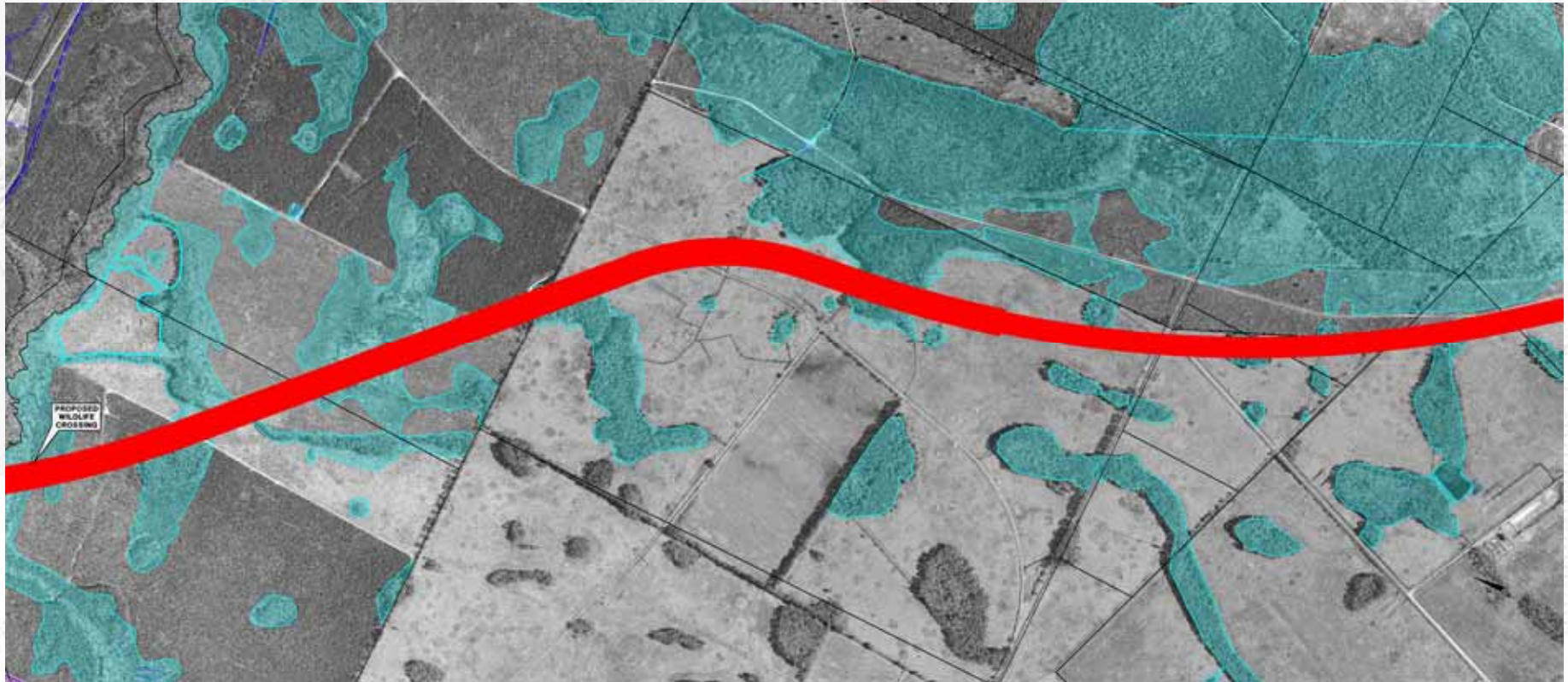
	COMMUNITY CENTER DISTRICT
	MIXED USE COMMERCIAL DEVELOPMENT
	OFFICE
	RETAIL
	RESIDENTIAL MEDIUM-DENSITY
	WELL
	WATER
	WILDLIFE & BIODIVERSITY
	DEVELOPMENT AREA BOUNDARY
	INTERSTATE FREEWAY
	PRINCIPAL ARTERIAL
	MINOR ARTERIAL
	MAJOR COLLECTOR

Consensus Alignment CR 210 to Leo Maguire Road



- COMMUNITY CENTER DISTRICT
- MIXED USE COMMERCIAL CENTER DISTRICT
- COMMUNITY CENTER DISTRICT
- SCHEMATIC
- UNDEVELOPED WETLAND DISTRICT
- WETLAND
- WETLAND W/ 100' BUFFER ZONE
- WETLAND BUFFER
- DEVELOPMENT AREA BOUNDARY
- INTERSTATE FREEWAY
- PRINCIPAL ARTERIAL
- MINOR ARTERIAL
- MAJOR COLLECTOR

Consensus Alignment Leo Maguire Road to SilverLeaf Plantation



- COMMUNITY CENTER DISTRICT
- MIXED USE COMMERCIAL CENTER DISTRICT
- COMMUNITY CENTER DISTRICT
- SCHOOLS
- UNDEVELOPED WETLAND DISTRICT
- WETLANDS
- WETLANDS WITH HIGH PRAIRIE FOREST
- WILDLIFE CORRIDOR
- DEVELOPMENT AREA BOUNDARY
- INTERSTATE FREEWAY
- PRINCIPAL ARTERIAL
- MINOR ARTERIAL
- MAJOR COLLECTION

Consensus Alignment SilverLeaf Plantation to SR 16



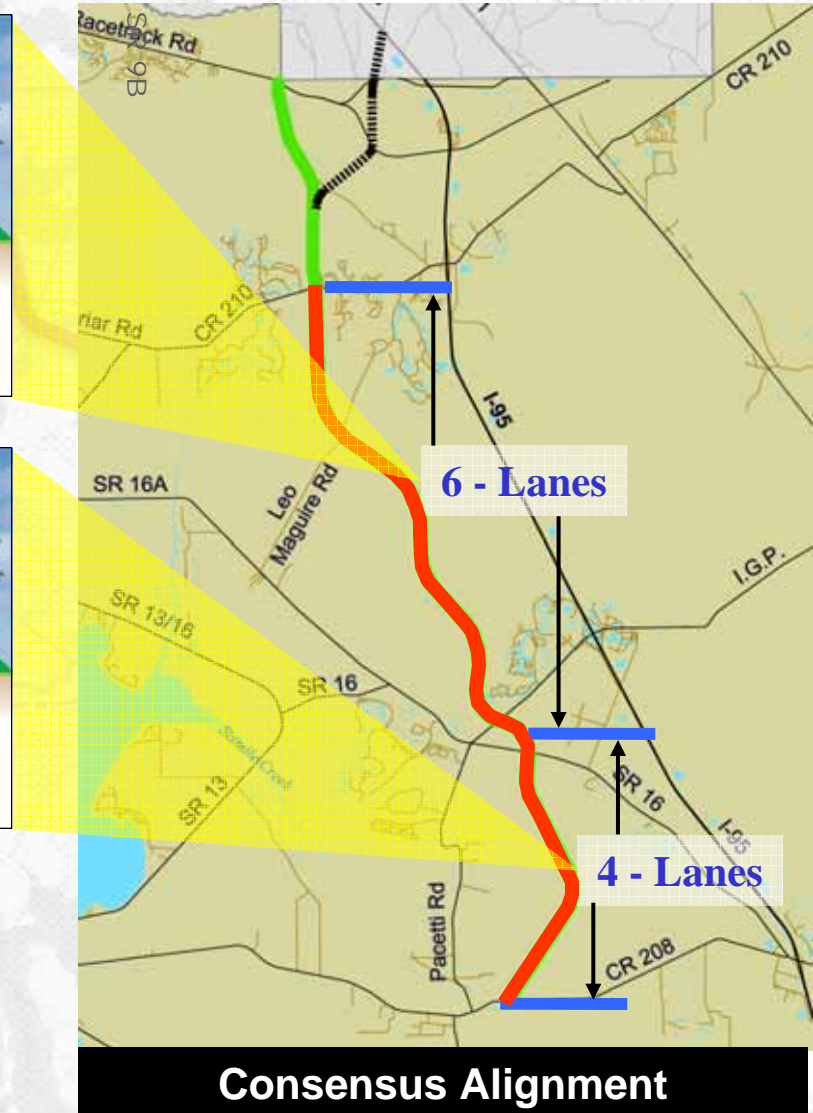
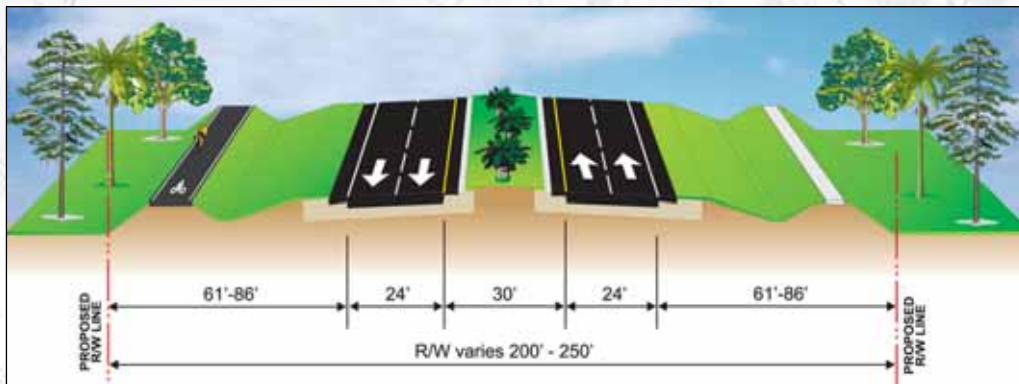
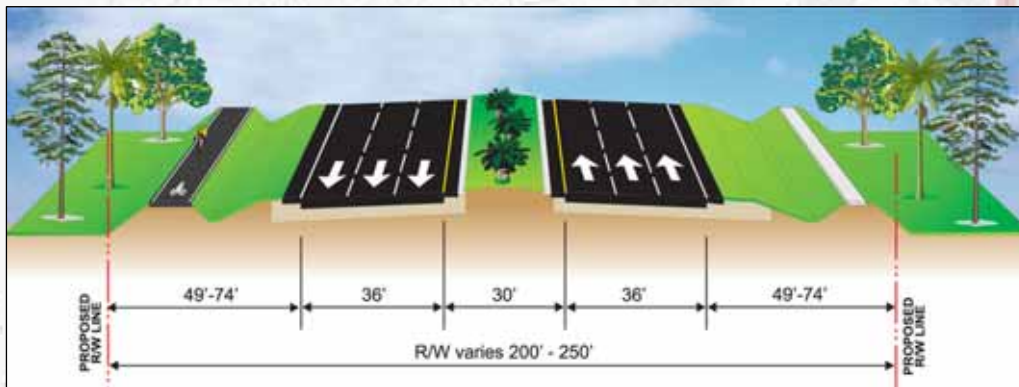
- COMMUNITY CENTER DISTRICT
- MIXED USE COMMERCIAL CENTER DISTRICT
- COMMUNITY CENTER DISTRICT
- SCHEMEL
- UNDEVELOPED WETLAND SYSTEM
- WETLAND
- WETLAND WITH HIGH PRAIRIE
- WETLAND WITH HIGH PRAIRIE
- WETLAND WITH HIGH PRAIRIE
- DEVELOPMENT AREA BOUNDARY
- INTERSTATE FREEWAY
- PRINCIPAL ARTERIAL
- MINOR ARTERIAL
- MAJOR COLLECTOR

Consensus Alignment SR 16 to CR 208



- COMMUNITY CENTER DISTRICT
- MIXED USE COMMERCIAL CENTER DISTRICT
- COMMUNITY CENTER DISTRICT
- SCHEMEL
- UNDEVELOPED WETLAND DISTRICT
- WETLAND
- STATIONAL WETLAND EVALUATION
- WETLAND ZONING
- DEVELOPMENT AREA BOUNDARY
- INTERSTATE FREEWAY
- PRINCIPAL ARTERIAL
- MINOR ARTERIAL
- MAJOR COLLECTION

Typical Section and Right-of-Way Requirements



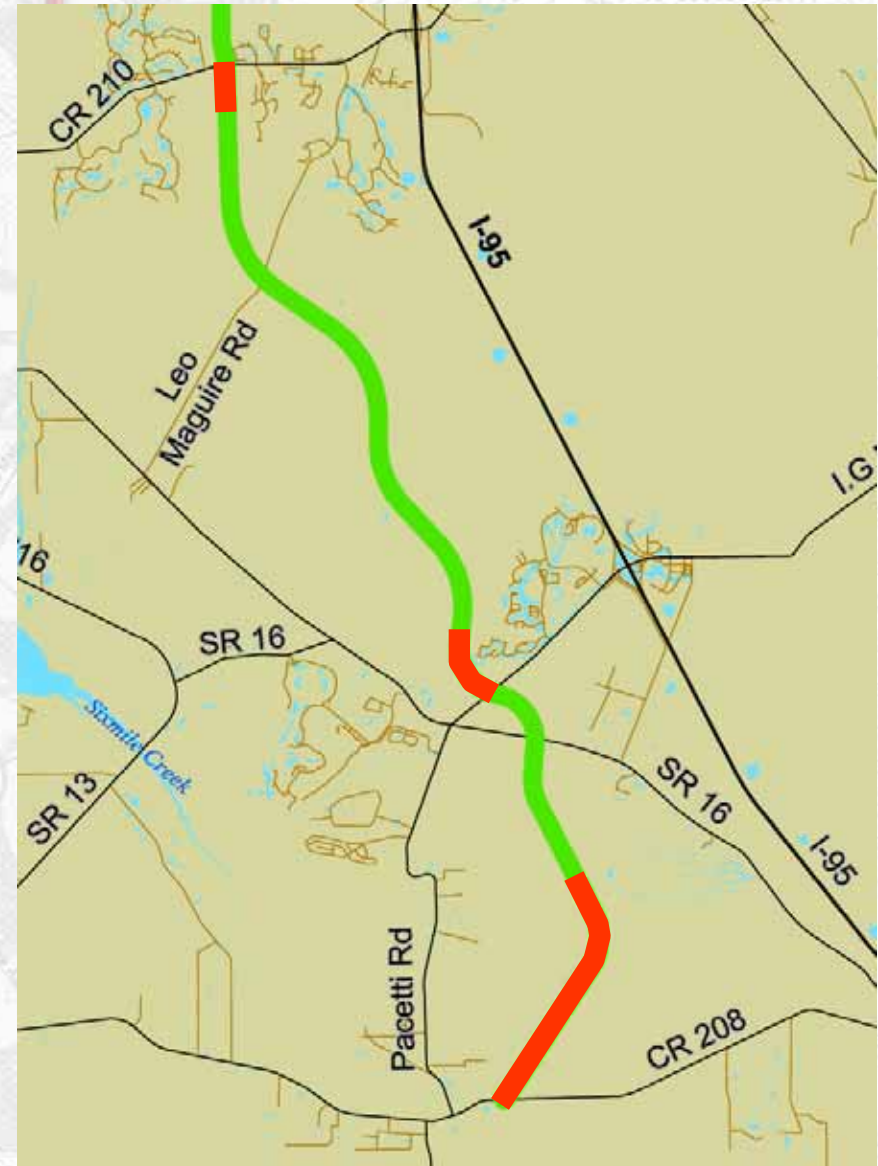
- Agreement with:
 - 55 MPH Design Speed
 - Access Management Class 3
 - 12-Foot Multi-Use Path

LEGEND

- EXISTING CENTERLINE
- EXISTING RIGHT-OF-WAY
- PROPOSED CENTERLINE
- PROPOSED RIGHT-OF-WAY
- PRINCIPAL ARTERIAL
- MINOR ARTERIAL
- MAJOR COLLECTOR

Right-of-Way Requirements

- **By Agreement (Green)**
 - Johns Creek
 - SilverLeaf
 - World Commerce Center
 - Palm Lakes
- **By Acquisition (Red)**
 - Pacetti
 - In Concert with SilverLeaf
 - Star 4



Action Items Being Requested

- **Adopt the following design elements**
 - **Consensus Alignment**
 - **Modified rural typical section and accompanying Right-of-Way Requirements**
 - **55 MPH design speed**
 - **Access Management Class 3**
 - **12' Multi-use path**
- **Authorize County staff to complete the preparation of Right-of-Way plans for the recommended consensus alignment (where required) and move forward with securing the necessary right of way for the entire central and southern segments of the project, with the exception of the area immediately south of CR 210.**

LEGEND

- WETLANDS
- STATIONAL WETLANDS/VENTURUS
- WETLANDS
- DEVELOPMENT AREA BOUNDARY
- INTERSTATE FREEWAY
- PRINCIPAL ARTERIAL
- MINOR ARTERIAL
- MAJOR COLLECTION

CR 2209

Preliminary Engineering Study

North-South Corridor

THANK YOU



St. Johns County, Florida

**Presentation to County Commissioners
January 24, 2006**

LEGEND

- RURAL CENTER DISTRICT
- COMMUNITY CENTER DISTRICT
- MIXED USE EDGE
- RURAL EDGE
- SCHOOLS
- CONNECTED HIGHWAYS
- WETLANDS
- NATIONAL WETLANDS
- WILDLIFE CORRIDOR
- DEVELOPMENT AREA BOUNDARY
- INTERSTATE THRUWAY
- PRINCIPAL ARTERIAL
- MINOR ARTERIAL
- MAJOR COLLECTOR



Reynolds, Smith and Hills, Inc.