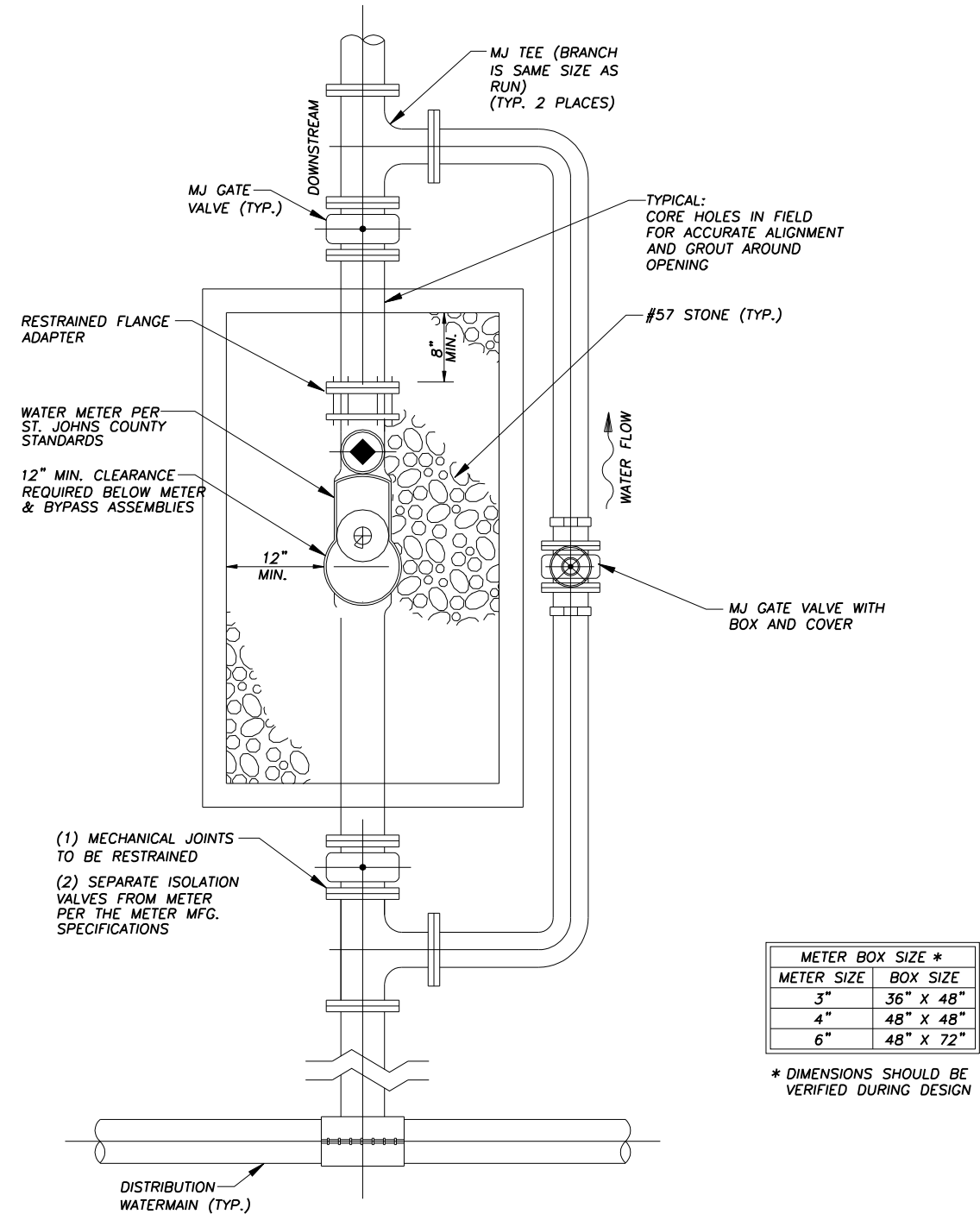
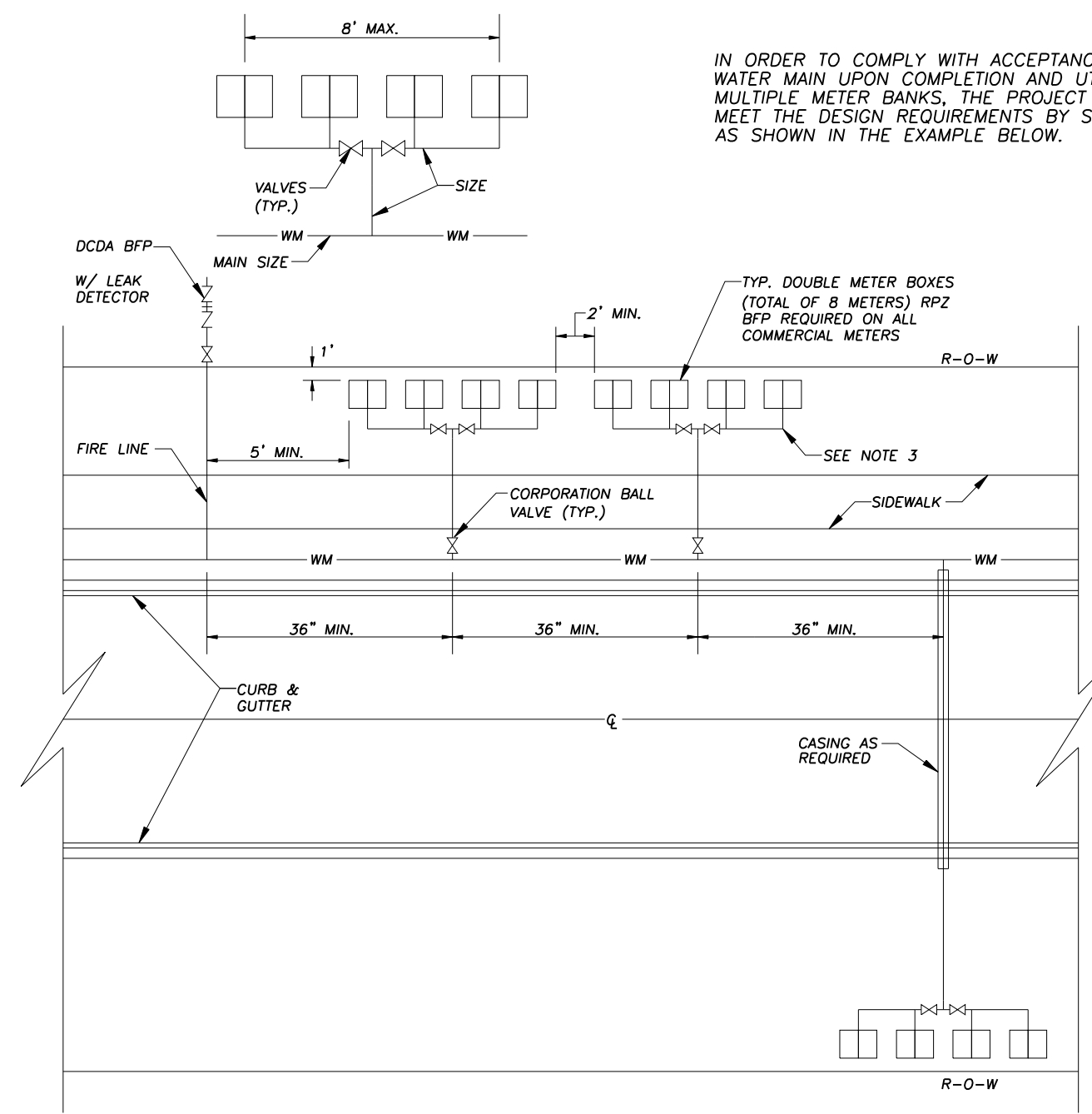


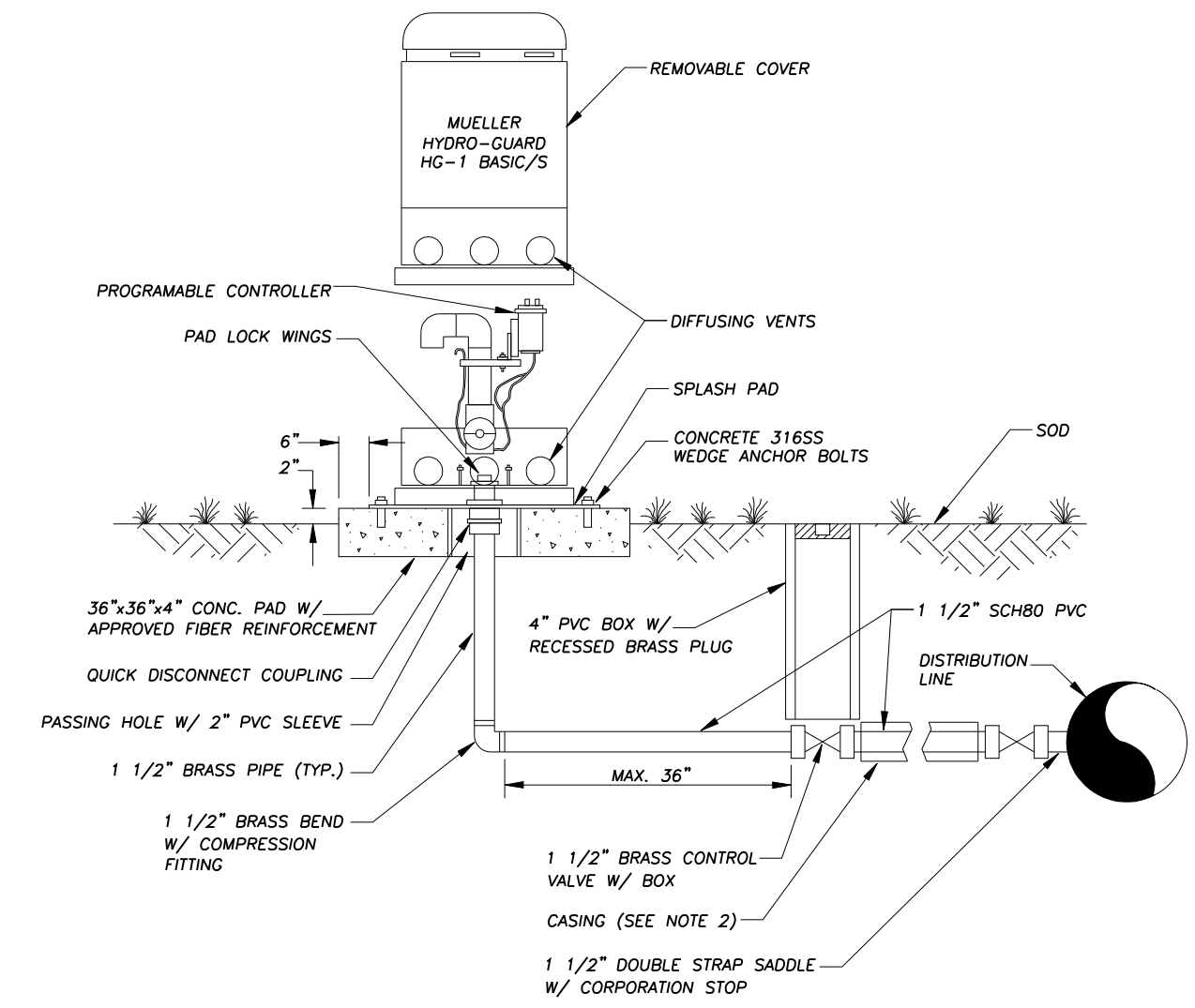
NOTES:  
 1. THE CONTRACTOR SHALL BE RESPONSIBLE FOR THE REMOVAL OF ALL PIPING AND FITTINGS ABOVE CORPORATION STOP UPON RECEIPT OF SATISFACTORY BACTERIOLOGICAL CLEARANCE FROM FDS.  
 2. LOCATION OF ALL TAPS TO BE SHOWN ON AS-BUILTS.



NOTE:  
 1. VAULTS SHALL BE TRAFFIC RATED AND SHALL BE SIZED TO MEET THE MINIMUM SPACE DIMENSIONS NOTED ON THIS DETAIL.  
 2. VAULT COVER SHALL BE HDG TRAFFIC RATED ALUMINUM COVER WITH HOLD OPEN ARMS AS MANUFACTURED BY BILCO OR APPROVED EQUAL. VAULT COVERS LARGER THAN 24x36 SHALL BE DOUBLE LEAF. ALL COVERS SHALL HAVE A LIFT ASSIST MECHANISM.  
 3. FOR METERS 8" OR LARGER, SUBMIT DETAIL DRAWINGS FOR APPROVAL.  
 4. METER TO BE CENTERED IN VAULT. BYPASS TO BE OUTSIDE OF VAULT.



NOTES:  
 1. NO WATER MAIN METER BOX OR VALVE TO BE CONSTRUCTED UNDER PAVED AREAS INCLUDING PARKING AREAS, DRIVEWAYS AND SIDEWALKS UNLESS PRIOR APPROVAL IS GRANTED BY SJUCD.  
 2. FOR TAPS TO EXISTING MAINS USE TAPPING SLEEVE OR SADDLE AND VALVE WITH BOX AND COVER.  
 3. TO BE ASSEMBLED USING PACK JOINTS AND COMPRESSION FITTINGS. NO GLUED JOINTS OR TAPPED SINGLE LENGTH OF PIPE.  
 4. SIZE OF PIPE BRANCHES SHALL BE DETERMINED BY THE ENGINEER AND BASED ON METER SIZES AND WATER DEMAND.  
 5. IF RIGHT-OF-WAYS ARE NOT PLATTED, THEN EASEMENT AND RESTORATION AGREEMENT REQUIRED.  
 6. FIRE LINE SERVICES SHALL BE SINGLE DETECTOR TO THE MAIN AND MUST INCLUDE REDUCED PRESSURE ZONE BACKFLOW PREVENTER (RPZ BFP) WITH LEAK DETECTOR, OR DOUBLE CHECK DETECTOR ASSEMBLY (DCCA) AS REQUIRED.  
 7. METER BOXES AND/OR REDUCED PRESSURE ZONE BACKFLOW PREVENTER (RPZ BFP) TO BE MARKED WITH THE APPROVED E-511 ADDRESS AND UNIT NUMBER.



NOTE:  
 1. 12" MINIMUM CLEARANCE TO BE MAINTAINED BETWEEN AUTOMATIC FLUSHING PAD AND ANY OBSTRUCTION.  
 2. FOR INSTALLATION OF SERVICES UNDER DRIVEWAYS AND ROADWAYS, USE MIN. 4" DR18 PVC OR CLASS 350 DL CASING SHALL EXTEND MINIMUM 24" BEYOND EDGE OF PAVEMENT. CASING TO BE SEALED WITH SIMPLEX OR BUTYL RUBBER. CASING SHALL BE COLOR CODED BLACK, WHITE, BLUE, OR BLUE STRIPED.  
 3. AUTOMATIC FLUSHING ASSEMBLY TO BE INSTALLED AS CLOSE AS POSSIBLE TO THE WATERMAIN.  
 4. BEDDING (MIN. 4") AND COVER (MIN. 4") OVER SERVICE LINE OR CASING SHALL CONSIST OF FINE GRANULAR MATERIAL. UNSUITABLE MATERIALS SUCH AS MUCK, DEBRIS AND LARGER ROCKS SHALL BE REMOVED WITH 2" MAXIMUM SIZE.  
 5. ALL HARDWARE FOR FLANGED CONNECTIONS (BOLTS, ETC.) TO BE 316SS.  
 6. THREADED AREAS OF CORPORATION STOP AND OTHER FITTINGS SHALL BE SPIRAL WRAPPED WITH TWO (2) WRAPS OF TEFLON TAPE. ALL BRASS SHALL BE "LEAD FREE".  
 7. A 4" THICK COMPACTED 3/4" ROCK BASE IS REQUIRED. THE BASE SHALL EXTEND MINIMUM 2" BEYOND AUTOMATIC FLUSHING ASSEMBLY PAD PERIMETER.

| REVISIONS | Date       | Comments |
|-----------|------------|----------|
| 2020      | REVISION 1 |          |

**ST. JOHNS COUNTY UTILITY DEPARTMENT**  
 1205 STATE ROAD 16  
 ST. AUGUSTINE, FLORIDA 32084  
 Phone (904) 209-2700 • Fax (904) 209-2802

**3/4" TEMPORARY SAMPLE TAP ALONG PIPE**  
 SCALE: N.T.S.

PLATE: W-9

| REVISIONS | Date       | Comments |
|-----------|------------|----------|
| 2020      | REVISION 1 |          |

**ST. JOHNS COUNTY UTILITY DEPARTMENT**  
 1205 STATE ROAD 16  
 ST. AUGUSTINE, FLORIDA 32084  
 Phone (904) 209-2700 • Fax (904) 209-2802

**TYPICAL LARGE WATER METER INSTALLATION**  
 SCALE: N.T.S.

PLATE: W-10

| REVISIONS | Date       | Comments |
|-----------|------------|----------|
| 2020      | REVISION 1 |          |

**ST. JOHNS COUNTY UTILITY DEPARTMENT**  
 1205 STATE ROAD 16  
 ST. AUGUSTINE, FLORIDA 32084  
 Phone (904) 209-2700 • Fax (904) 209-2802

**TYPICAL MULTIPLE WATER METER BANK INSTALLATION**  
 SCALE: N.T.S.

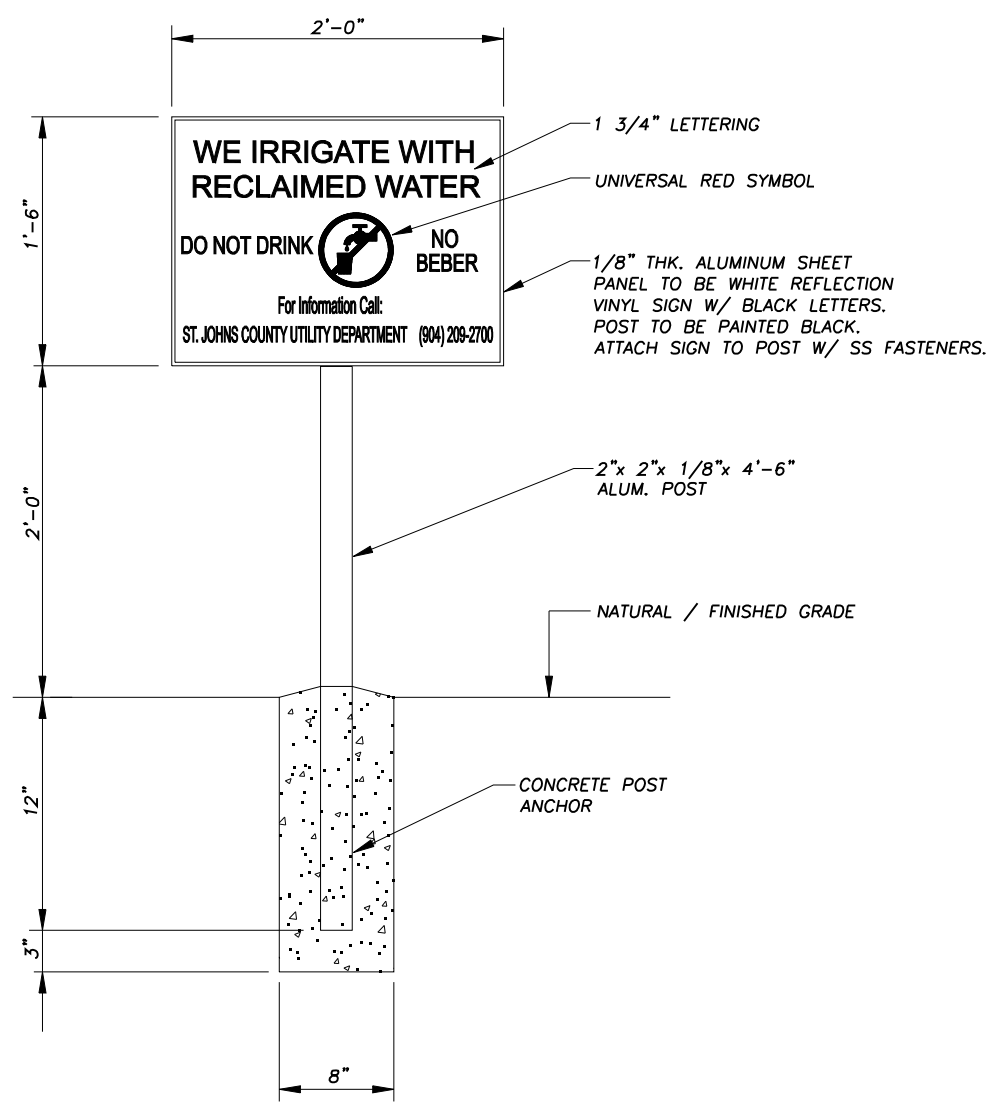
PLATE: W-11

| REVISIONS | Date       | Comments |
|-----------|------------|----------|
| 2020      | REVISION 1 |          |

**ST. JOHNS COUNTY UTILITY DEPARTMENT**  
 1205 STATE ROAD 16  
 ST. AUGUSTINE, FLORIDA 32084  
 Phone (904) 209-2700 • Fax (904) 209-2802

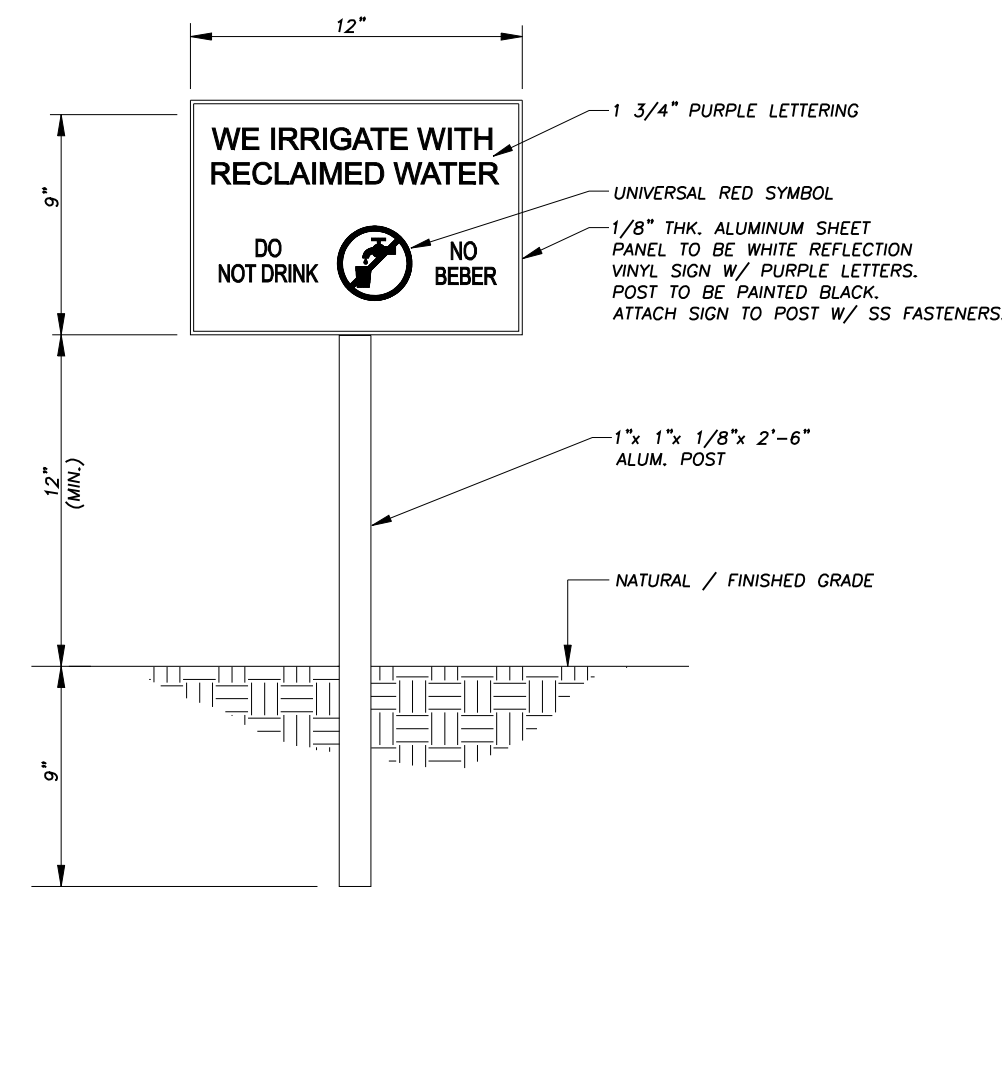
**AUTOMATIC FLUSHING ASSEMBLY (TYPE A)**  
 SCALE: N.T.S.

PLATE: W-12



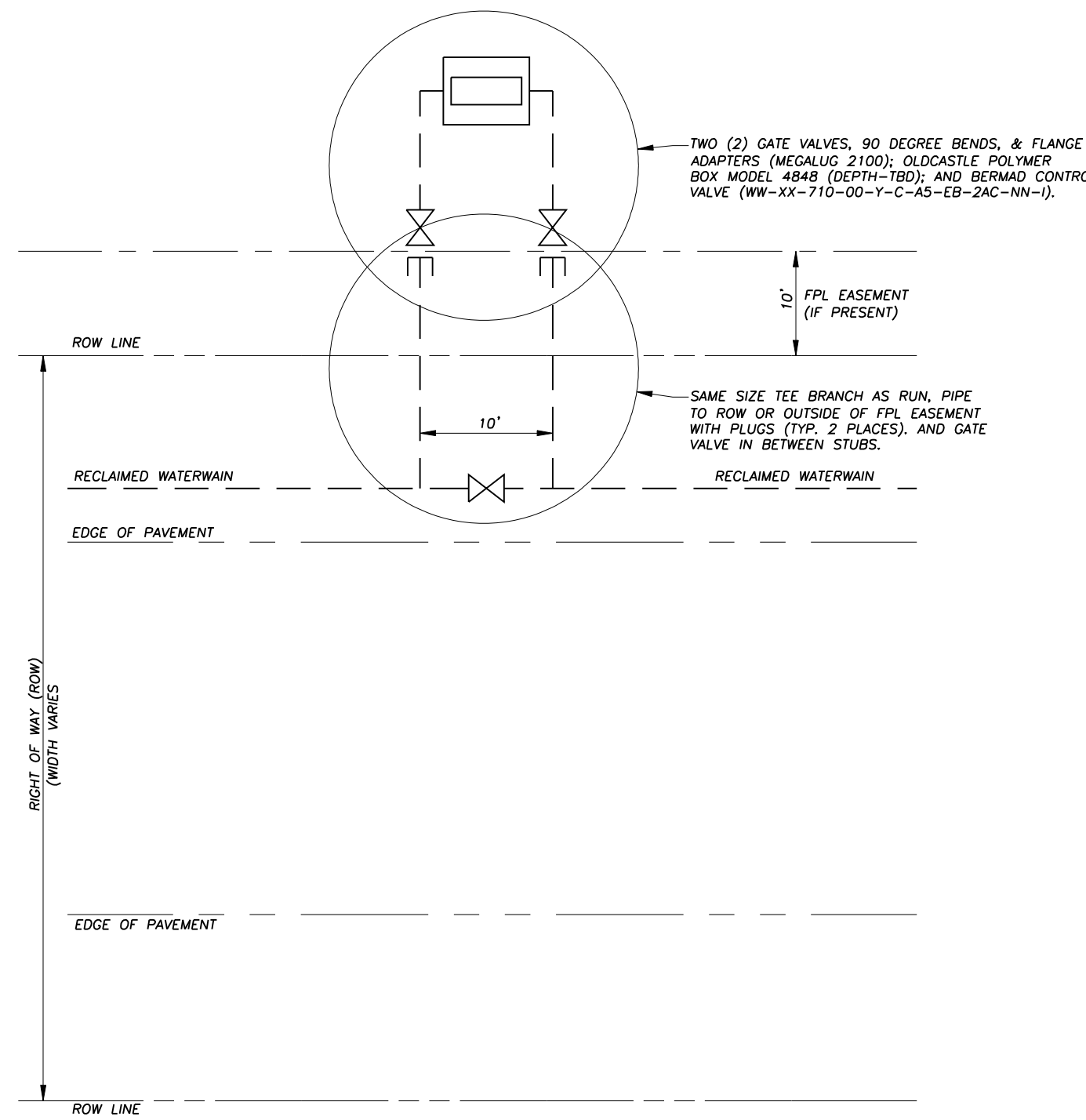
RECLAIMED WATER USE/WARNING SIGN

NOTE:  
 EACH DEVELOPMENT, SUBDIVISION, OR COMMERCIAL ESTABLISHMENT, REGARDLESS OF THE NUMBER OF BUILDINGS, SHALL INSTALL RECLAIMED WATER USE WARNING SIGNS AT THE ENTRANCES TO ANY PROPERTIES WHICH USE RECLAIMED WATER. THE SIGNS SHALL MEET THE REQUIREMENTS OF SJUCD DETAILS AND SPECIFICATIONS. THE SIGNS SHALL BE A REQUIREMENT WHETHER SHOWN ON PLANS OR NOT. DIRECTION OF LOCATING SIGNS SHALL BE GIVEN BY THE SJUCD INSPECTOR ON SITE. LANDSCAPING SHOULD BE CONSIDERED WHEN PLACING SIGN.



RECLAIMED WATER USE/WARNING SIGN - DIMINUTIVE

NOTE:  
 EACH DEVELOPMENT, SUBDIVISION, OR COMMERCIAL ESTABLISHMENT, REGARDLESS OF THE NUMBER OF BUILDINGS, SHALL INSTALL DIMINUTIVE RECLAIMED WATER USE WARNING SIGNS ALONG SIDEWALKS, WALKING PATHS, AND ASSOCIATED AREAS WHERE STANDARD RECLAIMED WATER USE WARNING SIGNS ARE NOT PLAINLY VISIBLE DUE TO DISTANCE OR OTHER NON-VEGETATIVE OBSTRUCTION, OR NOT FEASIBLE. THE SIGNS SHALL MEET THE REQUIREMENTS OF SJUCD DETAILS AND SPECIFICATIONS. THE SIGNS SHALL BE A REQUIREMENT WHETHER SHOWN ON PLANS OR NOT. SIGNS SHALL BE CLEARLY VISIBLE TO RESIDENTS AND GUESTS ENTERING. PROXIMITY TO CURB AND LANDSCAPING SHOULD BE CONSIDERED WHEN PLACING SIGN. SIGN SHALL BE TALLER THAN LANDSCAPING AND NOT BE BLOCKED BY FUTURE GROWTH OF VEGETATION OR DAMAGED BY MAINTENANCE EQUIPMENT. PUBLIC ACCESS COMMON AREAS SHALL ALSO HAVE SIGNS (INCLUDES OYFITE).



RECLAIMED WATER CONTROL VALVE INSTALLATION

| REVISIONS | Date       | Comments |
|-----------|------------|----------|
| 2020      | REVISION 1 |          |

**ST. JOHNS COUNTY UTILITY DEPARTMENT**  
 1205 STATE ROAD 16  
 ST. AUGUSTINE, FLORIDA 32084  
 Phone (904) 209-2700 • Fax (904) 209-2802

**RECLAIMED WATER USE/WARNING SIGN**  
 SCALE: N.T.S.

PLATE: R-1

| REVISIONS | Date       | Comments |
|-----------|------------|----------|
| 2020      | REVISION 1 |          |

**ST. JOHNS COUNTY UTILITY DEPARTMENT**  
 1205 STATE ROAD 16  
 ST. AUGUSTINE, FLORIDA 32084  
 Phone (904) 209-2700 • Fax (904) 209-2802

**RECLAIMED WATER USE/WARNING SIGN DIMINUTIVE**  
 SCALE: N.T.S.

PLATE: R-2

| REVISIONS | Date       | Comments |
|-----------|------------|----------|
| 2020      | REVISION 1 |          |

**ST. JOHNS COUNTY UTILITY DEPARTMENT**  
 1205 STATE ROAD 16  
 ST. AUGUSTINE, FLORIDA 32084  
 Phone (904) 209-2700 • Fax (904) 209-2802

**RECLAIMED WATER CONTROL VALVE INSTALLATION**  
 SCALE: N.T.S.

PLATE: R-3

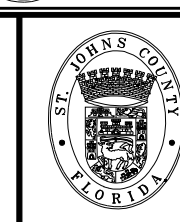
| NO. | BY    | DATE | SYMBOL     |
|-----|-------|------|------------|
| 1.  | SJUCD | 2020 | REVISION 1 |

REVISIONS

DESIGNER:  
 DRAWN BY:  
 DATE:  
 CHECKED BY:  
 DATE:

DESIGN ENGINEER

FLORIDA REGISTRATION NO.



**ST. JOHNS COUNTY UTILITY DEPARTMENT**  
 1205 STATE ROAD 16  
 ST. AUGUSTINE, FLORIDA 32084-8646  
 Phone (904) 209-2700 • Fax (904) 209-2702

WATER DETAILS

| NO. SHEETS           |
|----------------------|
| SHEET NO. D-4        |
| DRAWING NO. D-04.dwg |