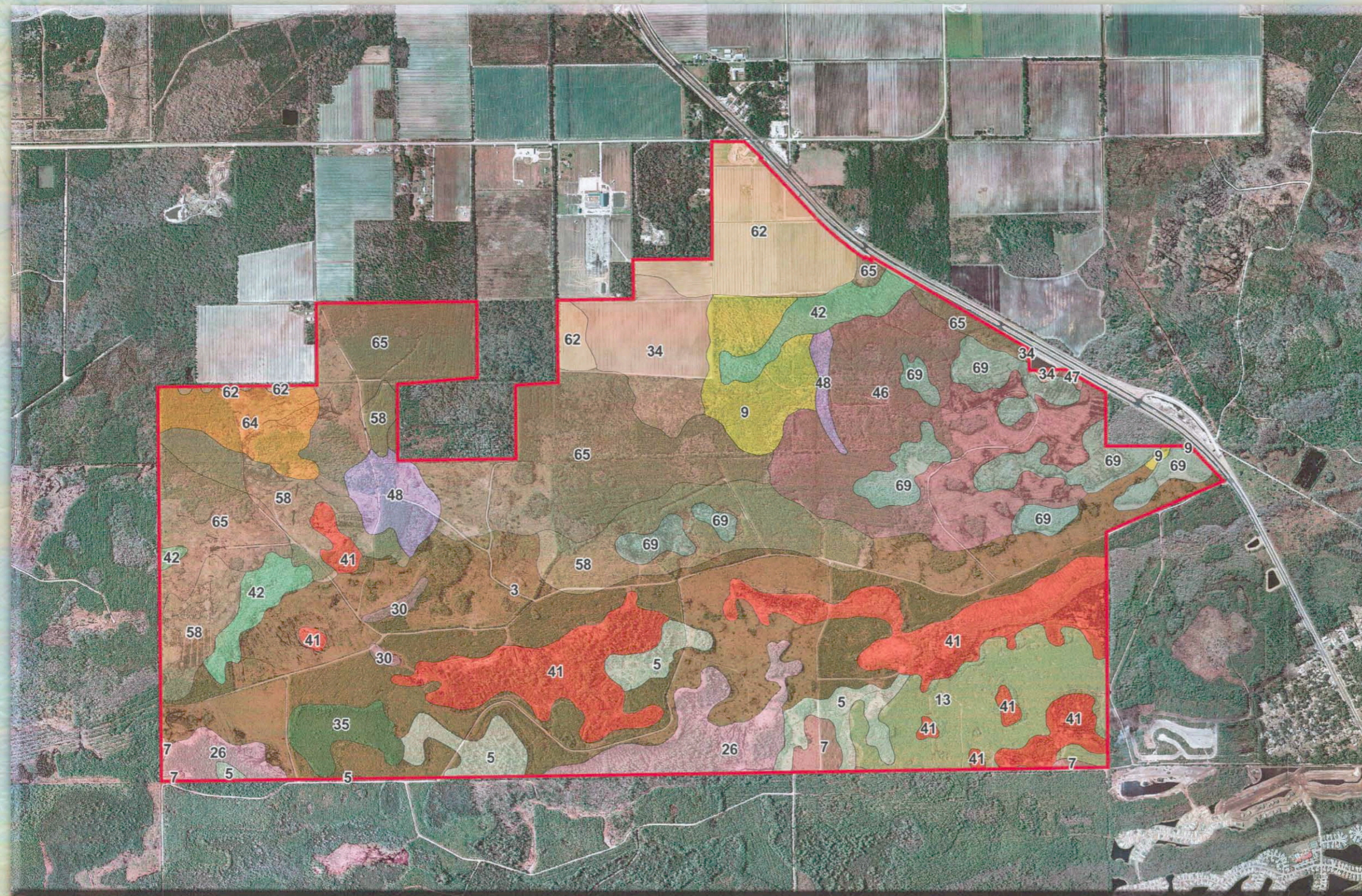


Elkton

Development of Regional Impact

Application for Development Approval

Map E Soils



LEGEND	
	SUBJECT PROPERTY
	(13) ST. JOHNS FINE SAND
	(26) SAMSULA MUCK
	(3) MYAKKA FINE SAND
	(30) WESCONNETT FINE SAND FREQUENTLY FLOODED
	(34) TOCCI FINE SAND
	(35) HONTOON MUCK
	(41) TOMOKA MUCK
	(42) BLUFF SANDY CLAY LOAM FREQUENTLY FLOODED
	(46) HOLOPAW FINE SAND
	(47) HOLOPAW FINE SAND FREQUENTLY FLOODED
	(48) WINDER FINE SAND FREQUENTLY FLOODED
	(5) ST. JOHNS FINE SAND DEPRESSIONAL
	(58) EAUGALLIE FINE SAND
	(62) FLORIDANA FINE SAND
	(64) ELLZEY FINE SAND
	(65) RIVIERA FINE SAND
	(69) BAKERSVILLE MUCK
	(7) IMMOKALEE FINE SAND
	(9) POMONA FINE SAND



Not to Scale

August 9, 2006


Prosser Hallock
PLANNERS & ENGINEERS

Source: Aerials Express 2006, St. Johns County, Prosser Hallock