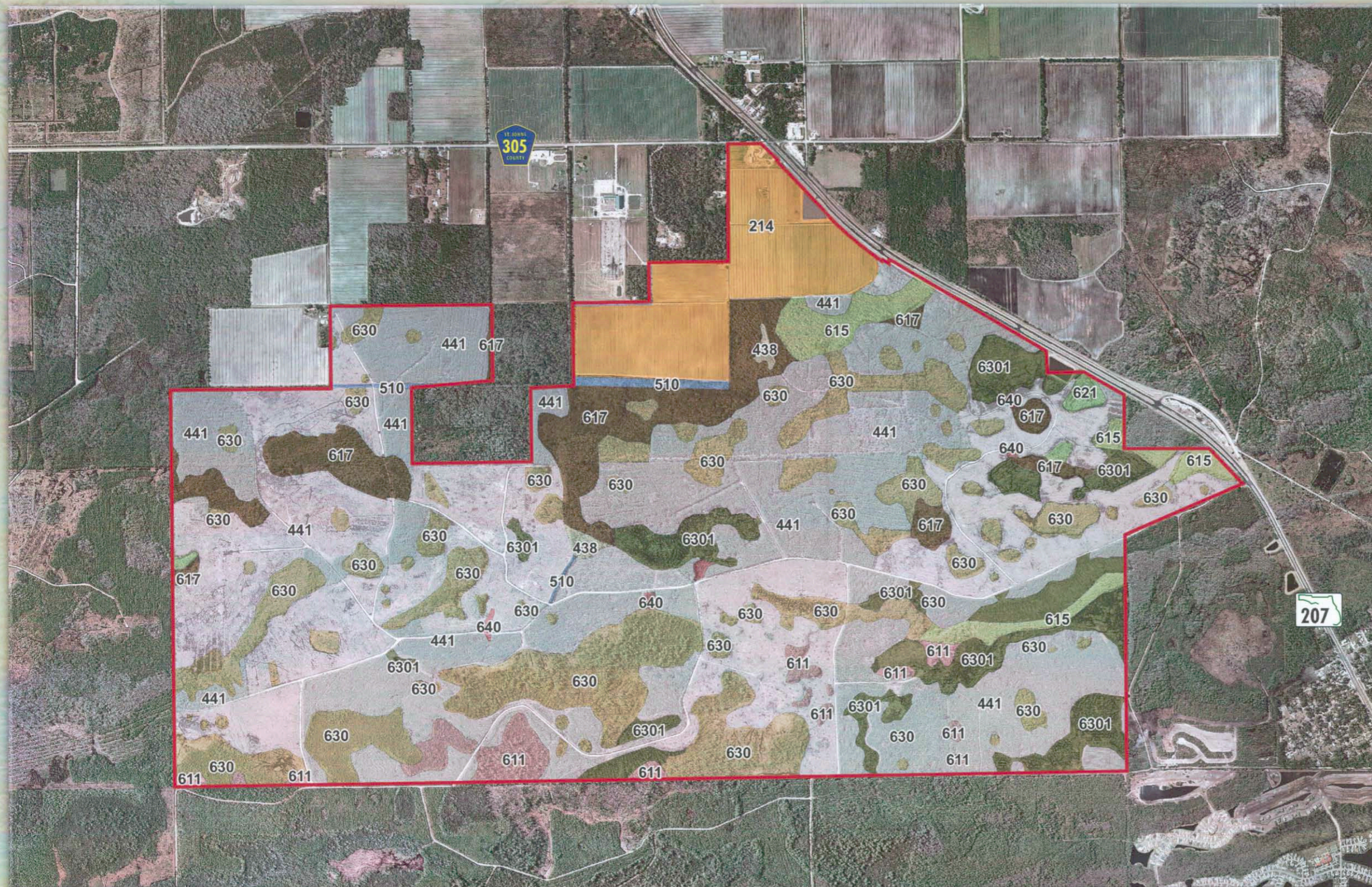


Elkton

Development of Regional Impact


Application for
Development Approval

Map F Vegetative Association Area



Land Use	Area
Subject Property	2,815 Ac.
(214) Row Crops	188 Ac.
(438) Mixed Hardwoods	7 Ac.
(441) Coniferous Plantation	1,537 Ac.
(510) Ditches	15 Ac.
(611) Bay Swamp	68 Ac.
(615) Stream Bottomland	73 Ac.
(617) Mixed Wetland Hardwoods	170 Ac.
(621) Cypress Wetland	4 Ac.
(630) Wetland Forested Mixed	524 Ac.
(6301) Harvested Wetland Forested Mixed	225 Ac.
(640) Vegetated Non-Forested Wetland	5 Ac.

Note: All areas are approximate.

 Not to Scale

August 9, 2006


Prosser Hallock
PLANNERS & ENGINEERS

Source: Aerials Express 2006, Environmental Resource Solutions, Inc., Prosser Hallock