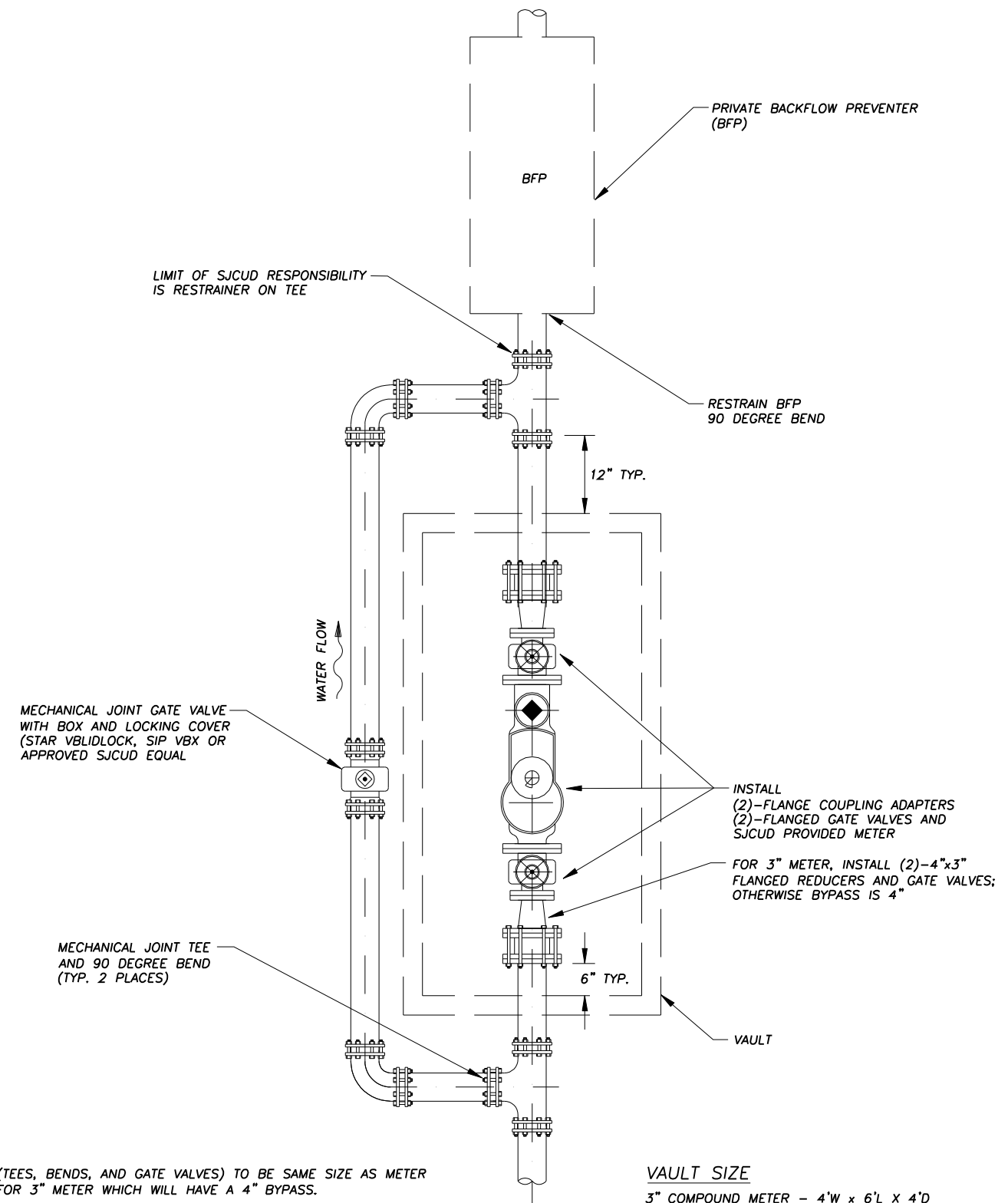
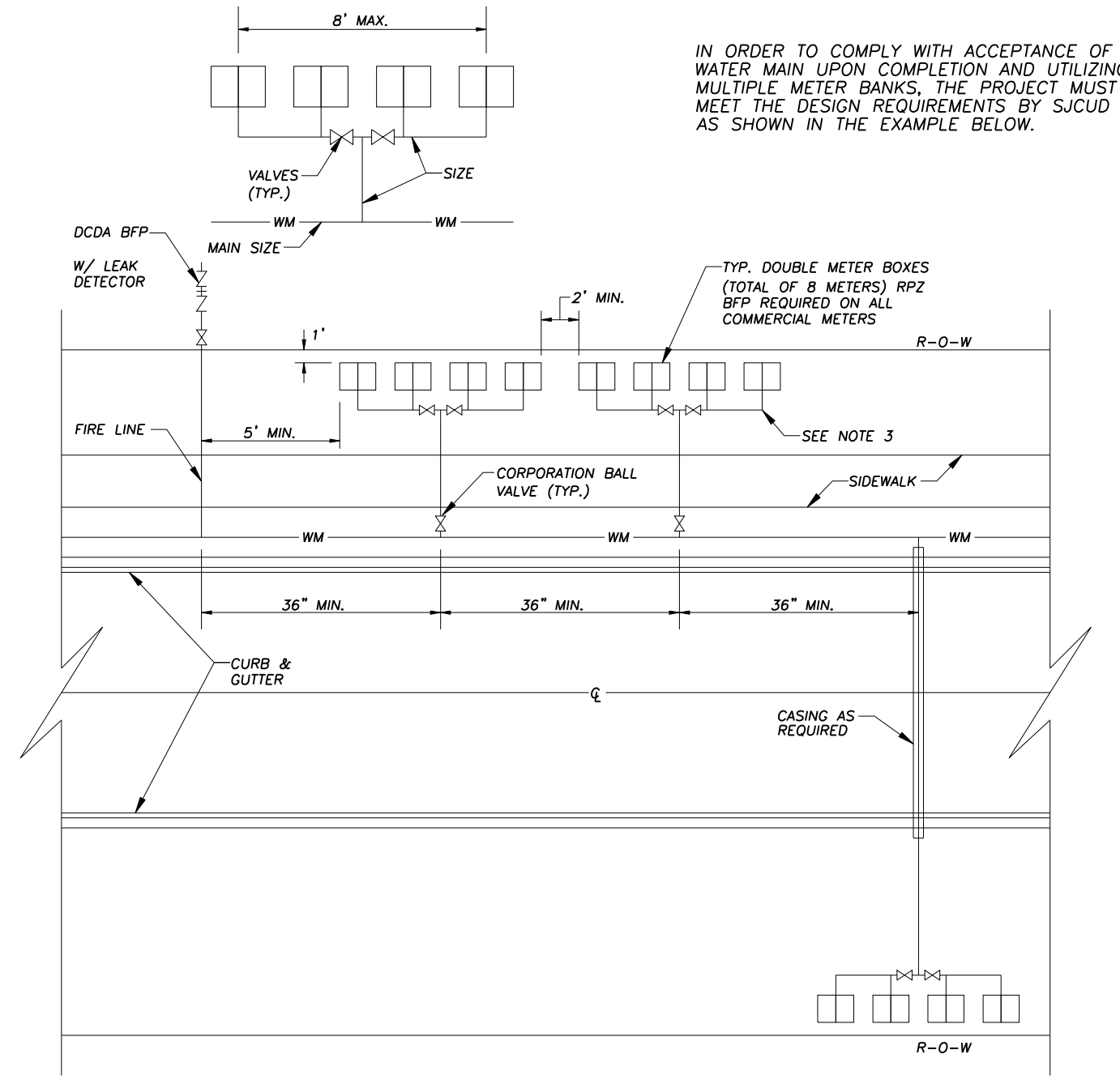


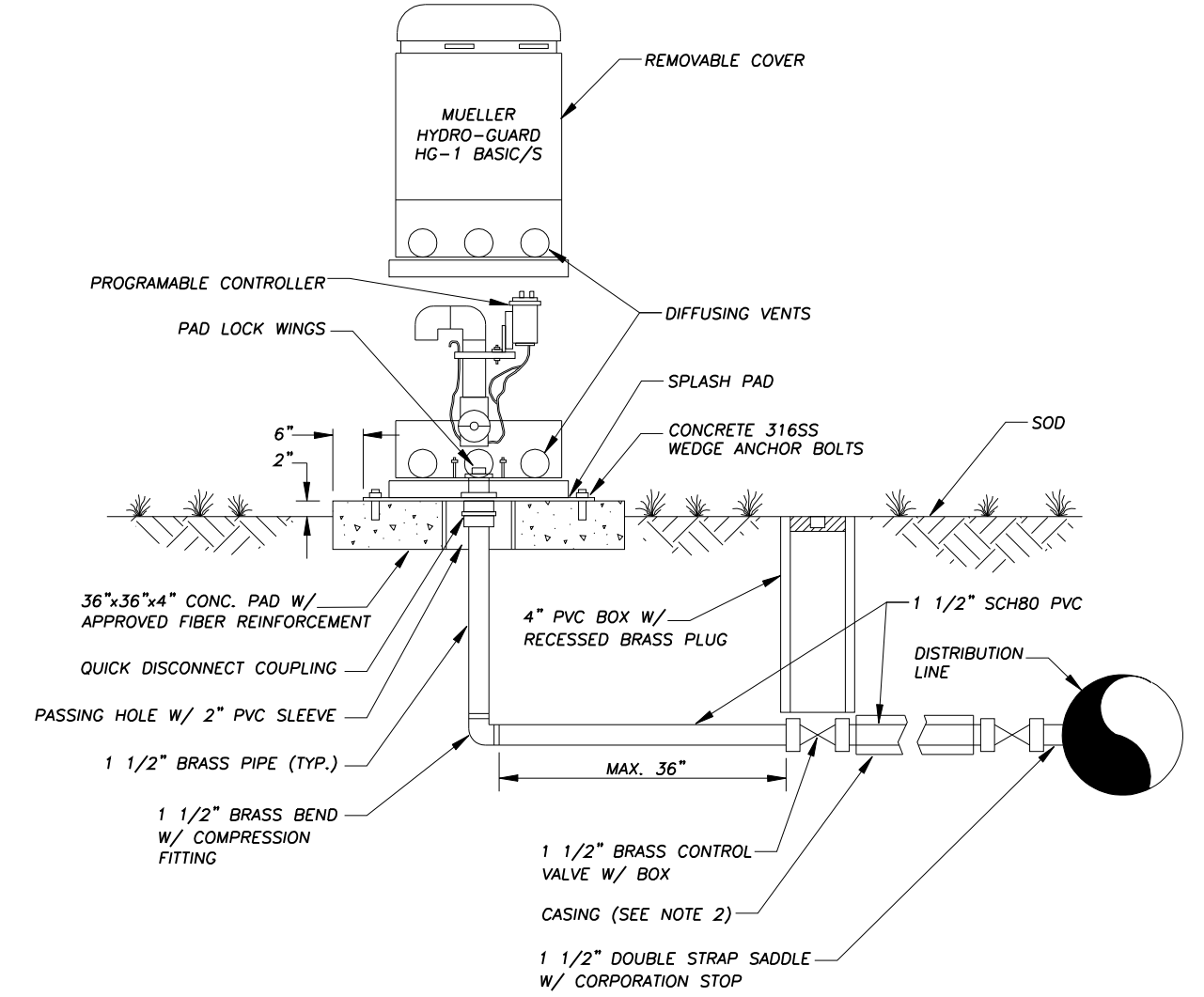
- NOTES:
- THE CONTRACTOR SHALL BE RESPONSIBLE FOR THE REMOVAL OF ALL PIPING AND FITTINGS ABOVE CORPORATION STOP UPON RECEIPT OF SATISFACTORY BACTERIOLOGICAL CLEARANCE FROM FDEP.
  - LOCATION OF ALL TAPS TO BE SHOWN ON AS-BUILTS.



- NOTES:
- BYPASS (TEES, BENDS, AND GATE VALVES) TO BE SAME SIZE AS METER EXCEPT FOR 3" METER WHICH WILL HAVE A 4" BYPASS.
  - ALL MECHANICAL JOINTS ARE RESTRAINED.
  - METER SHOULD SIT ON A CONCRETE BLOCK WITH OPEN CELLS FACING UP.
  - VAULT SHALL BE MANUFACTURED BY ARMORCAST PRODUCTS AS LISTED IN THE APPROVED MATERIALS LIST OR SUCUD APPROVED EQUAL. ALL HARDWARE SHALL BE 316SS.
- VAULT SIZE
- 3" COMPOUND METER - 4'W x 6'L x 4'D
  - 4" COMPOUND METER - 4'W x 6'L x 4'D
  - 6" COMPOUND METER - 4'W x 6'L x 4'D
  - 8" COMPOUND METER - 4'W x 8'L x 4'D
  - 4" FIRE METER - 4'W x 8'L x 4'D
  - 6" FIRE METER - 4'W x 8'L x 4'D
  - 8" FIRE METER - 4'W x 8'L x 4'D

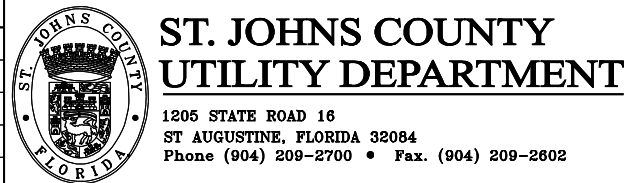


- NOTES:
- NO WATER MAIN METER BOX OR VALVE TO BE CONSTRUCTED UNDER PAVED AREAS INCLUDING PARKING AREAS, DRIVEWAYS AND SIDEWALKS UNLESS PRIOR APPROVAL IS GRANTED BY SJCUD.
  - FOR TAPS TO EXISTING MAINS USE TAPPING SLEEVE OR SADDLE AND VALVE WITH BOX AND COVER.
  - TO BE ASSEMBLED USING PACK JOINTS AND COMPRESSION FITTINGS. NO GLUED JOINTS OR TAPPED SINGLE LENGTH OF PIPE.
  - SIZE OF PIPE BRANCHES SHALL BE DETERMINED BY THE ENGINEER AND BASED ON METER SIZES AND WATER DEMAND.
  - IF RIGHT-OF-WAYS ARE NOT PLATTED, THEN EASEMENT AND RESTORATION AGREEMENT REQUIRED.
  - FIRE LINE SERVICES SHALL BE SINGLE CONNECTIONS TO THE MAIN AND MUST INCLUDE REDUCED PRESSURE ZONE BACKFLOW PREVENTER (RPZ BFP) WITH LEAK DETECTOR, OR DOUBLE CHECK DETECTOR ASSEMBLY (DCCDA) AS REQUIRED.
  - METER BOXES AND/OR REDUCED PRESSURE ZONE BACKFLOW PREVENTER (RPZ BFP) TO BE MARKED WITH THE APPROVED E-911 ADDRESS AND UNIT NUMBER.



- NOTE:
- 12" MINIMUM CLEARANCE TO BE MAINTAINED BETWEEN AUTOMATIC FLUSHING PAD AND ANY OBSTRUCTION.
  - FOR INSTALLATION OF SERVICES UNDER DRIVEWAYS AND ROADWAYS, USE MIN. 4" DR18 PVC OR CLASS 350 DL CASING SHALL EXTEND MINIMUM 24" BEYOND EDGE OF PAVEMENT. CASING TO BE SEALED WITH SIMPLEX OR BUTYL RUBBER. CASING SHALL BE COLOR CODED BLACK, WHITE, BLUE, OR BLUE STRIPED.
  - AUTOMATIC FLUSHING ASSEMBLY TO BE INSTALLED AS CLOSE AS POSSIBLE TO THE WATERMAIN.
  - BEDDING (MIN. 4") AND COVER (MIN. 4") OVER SERVICE LINE OR CASING SHALL CONSIST OF FINE GRANULAR MATERIAL. UNSUITABLE MATERIALS SUCH AS MUCK, DEBRIS AND LARGER ROCKS SHALL BE REMOVED WITH 2" MAXIMUM SIZE.
  - ALL HARDWARE FOR FLANGED CONNECTIONS (BOLTS, ETC.) TO BE 316SS.
  - THREADED AREAS OF CORPORATION STOP AND OTHER FITTINGS SHALL BE SPIRAL WRAPPED WITH TWO (2) WRAPS OF TEFLON TAPE. ALL BRASS SHALL BE "LEAD FREE".
  - A 4" THICK COMPACTED 3/4" ROCK BASE IS REQUIRED. THE BASE SHALL EXTEND MINIMUM 2" BEYOND AUTOMATIC FLUSHING ASSEMBLY PAD PERIMETER.

REVISIONS	Date	Comments
2020	REVISION 1	

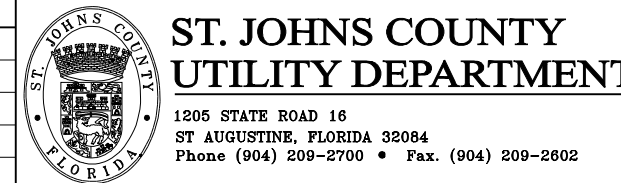


**ST. JOHNS COUNTY  
UTILITY DEPARTMENT**  
1205 STATE ROAD 16  
ST. AUGUSTINE, FLORIDA 32084  
Phone (904) 209-2700 • Fax. (904) 209-2802

**3/4" TEMPORARY  
SAMPLE TAP  
ALONG PIPE**  
SCALE: N.T.S.

PLATE:  
W-9

REVISIONS	Date	Comments
2020	REVISION 1	
5/22	REVISION 2	

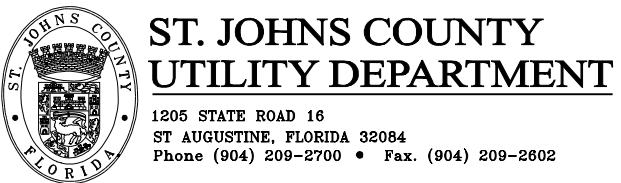


**ST. JOHNS COUNTY  
UTILITY DEPARTMENT**  
1205 STATE ROAD 16  
ST. AUGUSTINE, FLORIDA 32084  
Phone (904) 209-2700 • Fax. (904) 209-2802

**TYPICAL 3" - 8"  
METER INSTALLATION**  
SCALE: N.T.S.

PLATE:  
W-10

REVISIONS	Date	Comments
2020	REVISION 1	

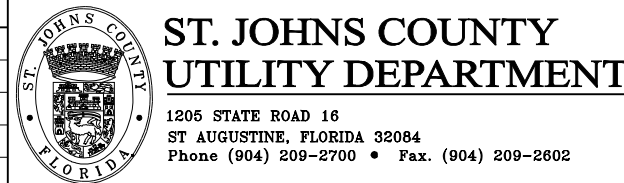


**ST. JOHNS COUNTY  
UTILITY DEPARTMENT**  
1205 STATE ROAD 16  
ST. AUGUSTINE, FLORIDA 32084  
Phone (904) 209-2700 • Fax. (904) 209-2802

**TYPICAL MULTIPLE  
WATER METER BANK  
INSTALLATION**  
SCALE: N.T.S.

PLATE:  
W-11

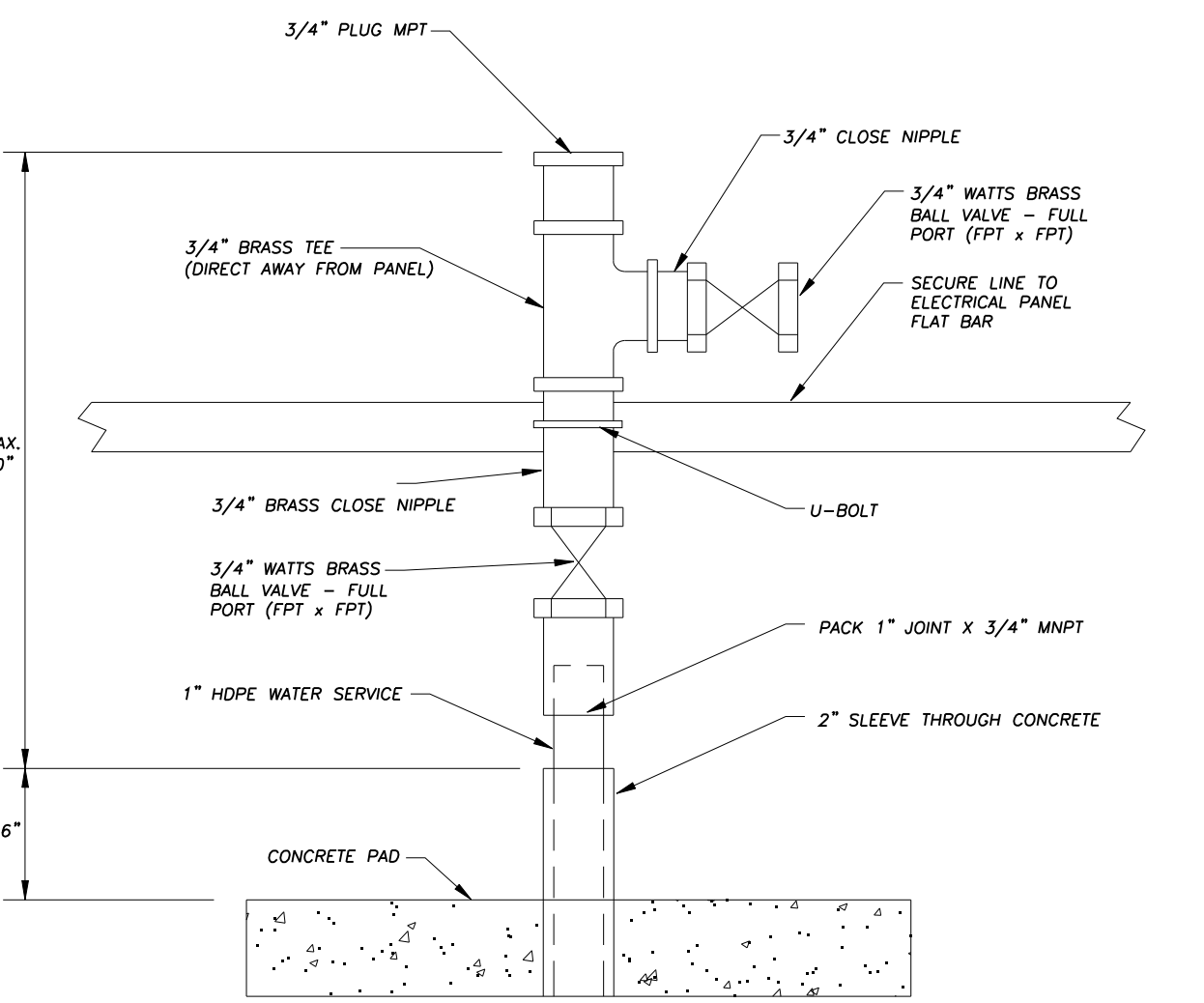
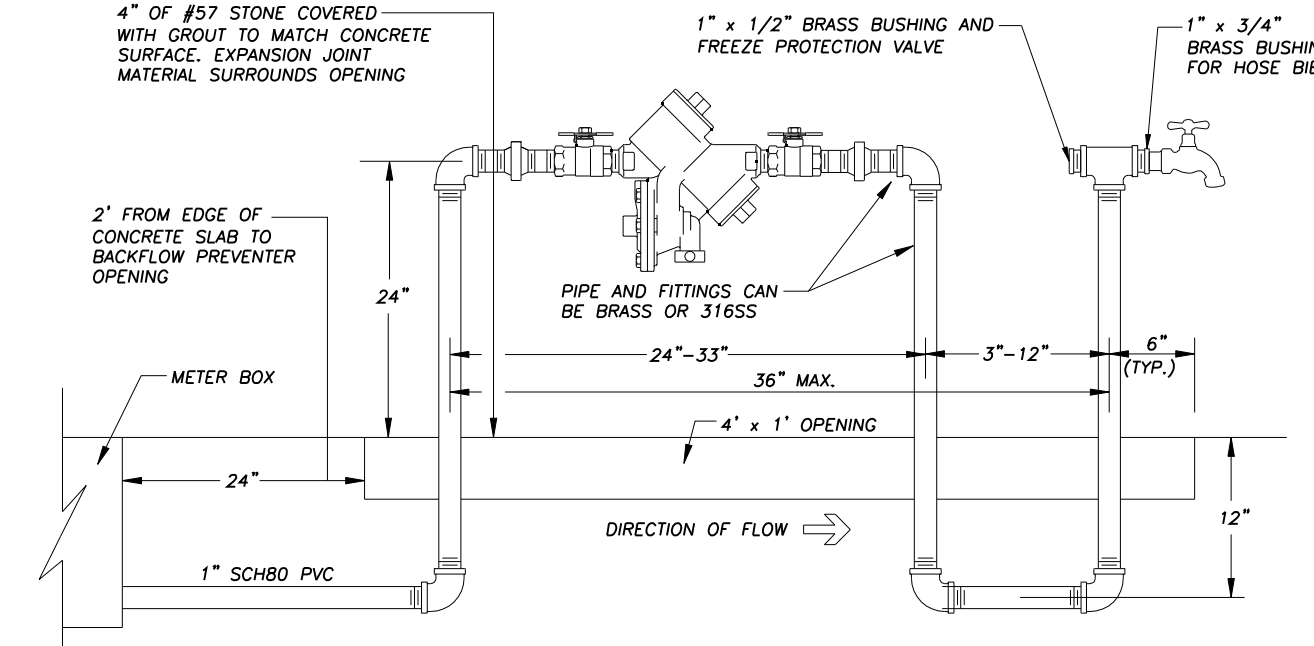
REVISIONS	Date	Comments
2020	REVISION 1	



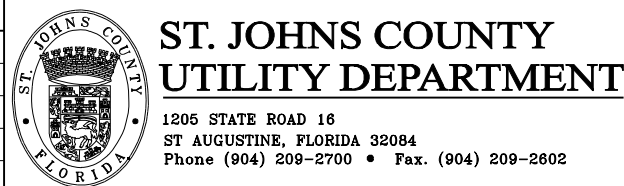
**ST. JOHNS COUNTY  
UTILITY DEPARTMENT**  
1205 STATE ROAD 16  
ST. AUGUSTINE, FLORIDA 32084  
Phone (904) 209-2700 • Fax. (904) 209-2802

**AUTOMATIC FLUSHING  
ASSEMBLY (TYPE A)**  
SCALE: N.T.S.

PLATE:  
W-12



REVISIONS	Date	Comments
2020	REVISION 1	

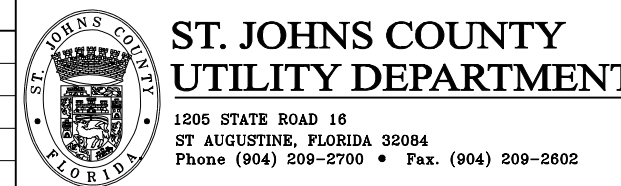


**ST. JOHNS COUNTY  
UTILITY DEPARTMENT**  
1205 STATE ROAD 16  
ST. AUGUSTINE, FLORIDA 32084  
Phone (904) 209-2700 • Fax. (904) 209-2802

**BACKFLOW PREVENTER  
INSTALLATION DETAIL**  
SCALE: N.T.S.

PLATE:  
W-13

REVISIONS	Date	Comments
2020	REVISION 1	



**ST. JOHNS COUNTY  
UTILITY DEPARTMENT**  
1205 STATE ROAD 16  
ST. AUGUSTINE, FLORIDA 32084  
Phone (904) 209-2700 • Fax. (904) 209-2802

**STATIC POTABLE/  
RECLAIMED WATER  
LINE CONNECTION**  
SCALE: N.T.S.

PLATE:  
W-14

NO.	BY	DATE	SYMBOL	REVISIONS	DESIGNER:	DRAWN BY:	DATE:	CHECKED BY:	DATE:	DESIGN ENGINEER:	FLORIDA REGISTRATION NO.:	NO. SHEETS
6.												SHEET NO.
5.												D-4
4.												DRAWING NO.
3.												D-04.dwg
2.												
1.	SJCUD	2020		REVISION 1								

**ST. JOHNS COUNTY  
UTILITY DEPARTMENT**  
1205 STATE ROAD 16  
ST. AUGUSTINE, FLORIDA 32084-8646  
Phone (904) 209-2700 • Fax (904) 209-2702

**WATER DETAILS**