

ST. JOHNS COUNTY
**Hastings
 Community Center
 & Library**



ADULT COLLECTION
 FROM SERVICE POINT
 EAST ENTRY



WEST COVERED PATIO
 ENCLOSED CHILDREN'S COVERED PATIO
 BETWEEN BUILDING AND PARKING



CHILDREN'S ENTRY
 NEAR BUSINESS CENTER
 APPROACHING FROM WEST ENTRY



ENTRY
 LOOKING TOWARDS THE
 MEETING ROOMS
 WEST SIDE



ADULT COLLECTION
 FROM SEATING
 EAST SIDE



CHILDREN'S COLLECTION
 FROM CHILDREN'S PATIO DOOR
 WEST SIDE

Hastings Community Center & Library

Hastings Historical Precedents



HASTINGS COMMUNITY CENTER
(DEMOLISHED)

Notable art deco form - Previously located on the proposed library site - Used as a community hub starting in 1937 and demolished in 2019



HASTINGS TRAIN STATION
(DEMOLISHED)

Significant railroad connection through Henry M. Flagler - Railroad assisted in transporting vegetation good to St. Augustine and even up to New York



DOWNTOWN HASTINGS
(ALTERED)

Downtown is located along side of the railroad - significant historical ties for the community



POTATO GROWERS ASS'N
(EXISTING)

The Hastings Potato Growers Association was created by a small group of farmers in 1922 - The group's hub was built in 1927 - Hastings is the Potato Capitol of Florida



HOTEL HASTINGS
(DEMOLISHED)

Owned by A.I. Freeman - Built and operated in 1908 - Burned down in 1943



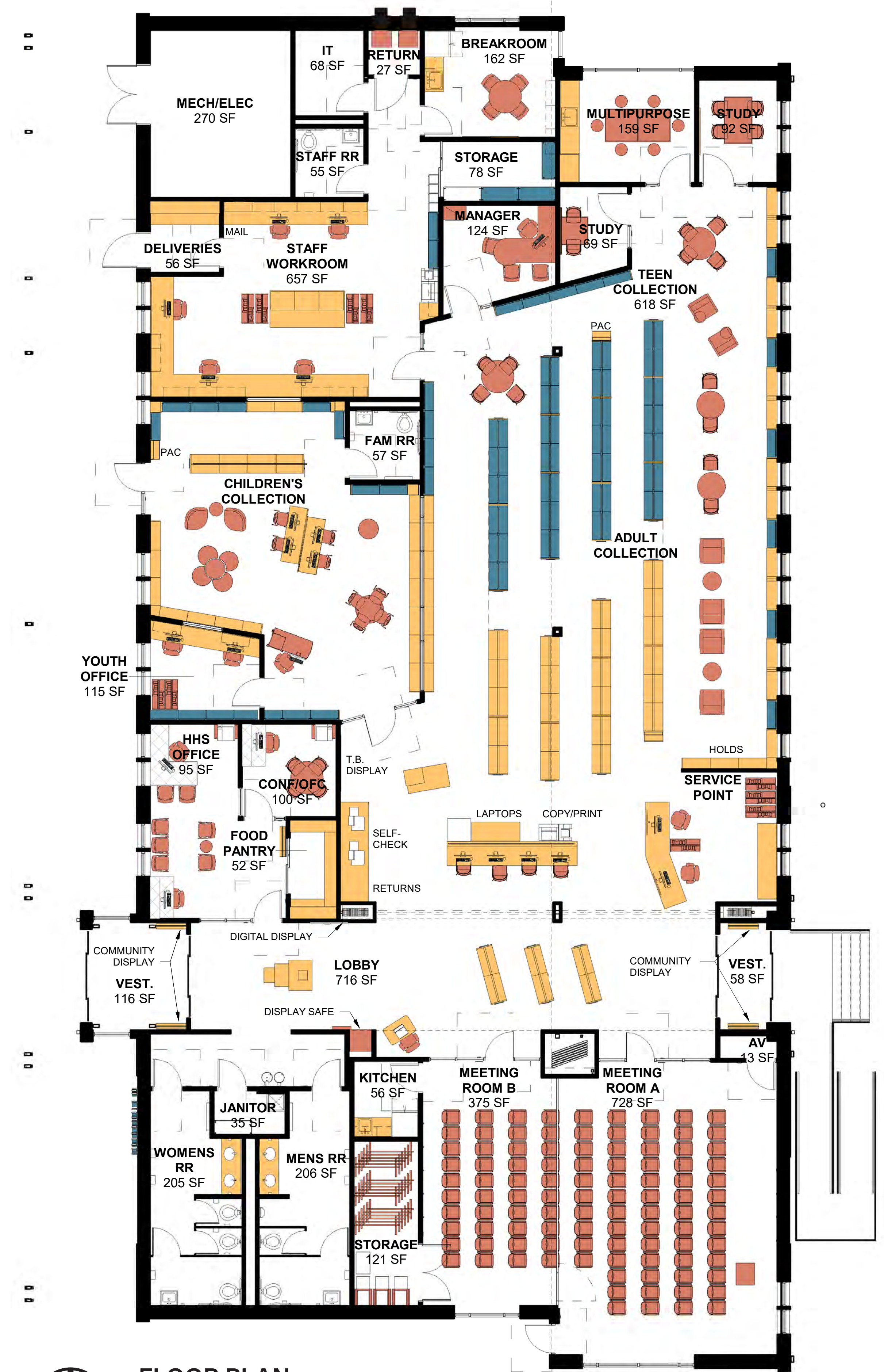
STANTON BUILDING
(ALTERED)

Significant Hastings cultural resource - Connected to historical and commercial development - locally known for its painted murals in the late doctor office that resided in the second floor

Hastings Community Center & Library



SITE PLAN
0 10 20 50



FLOOR PLAN
0 5 10 20

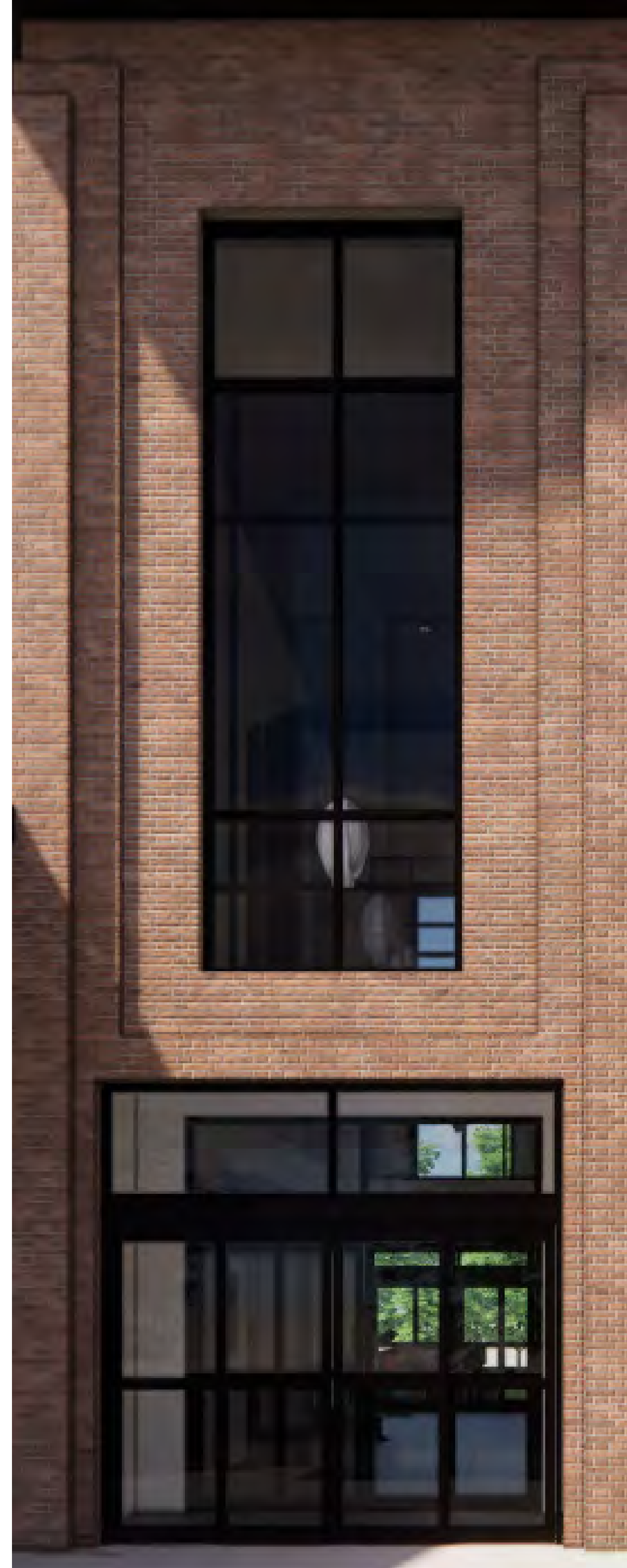
ST. JOHNS COUNTY

Hastings Community Center & Library

Material Exploration



MATERIAL 1
WHITE BRICK



MATERIAL 2
RED BRICK



MATERIAL 3
WHITE STUCCO

ST. JOHNS COUNTY

Hastings Community Center & Library

Concept A
Former Community Center



EAST ELEVATION
ACROSS MAIN STREET SIDE



SOUTH EAST CORNER
PARKING LOT EXIT/NEAR MEETING ROOM



EAST ENTRY
MAIN STREET SIDE/APPROACHING THE BUILDING



WEST ENTRY
PARKING LOT SIDE/APPROACHING THE BUILDING

PLACE STICKER ANYWHERE ON THE BOARD TO VOTE

ST. JOHNS COUNTY

Hastings Community Center & Library

Concept B
Former Train Station



EAST ELEVATION
ACROSS MAIN STREET SIDE



SOUTH EAST CORNER
PARKING LOT EXIT/NEAR MEETING ROOM



EAST ENTRY
MAIN STREET SIDE/APPROACHING THE BUILDING



WEST ENTRY
PARKING LOT SIDE/APPROACHING THE BUILDING

PLACE STICKER ANYWHERE ON THE BOARD TO VOTE

ST. JOHNS COUNTY

Hastings Community Center & Library

Concept C
Hybrid



EAST ELEVATION
ACROSS MAIN STREET SIDE



SOUTH EAST CORNER
PARKING LOT EXIT/NEAR MEETING ROOM



EAST ENTRY
MAIN STREET SIDE/APPROACHING THE BUILDING



WEST ENTRY
PARKING LOT SIDE/APPROACHING THE BUILDING

PLACE STICKER ANYWHERE ON THE BOARD TO VOTE

ST. JOHNS COUNTY

Hastings Community Center & Library

Concept D
Initial Design



EAST ELEVATION
ACROSS MAIN STREET SIDE



SOUTH EAST CORNER
PARKING LOT EXIT/NEAR MEETING ROOM



EAST ENTRY
MAIN STREET SIDE/APPROACHING THE BUILDING



WEST ENTRY
PARKING LOT SIDE/APPROACHING THE BUILDING

PLACE STICKER ANYWHERE ON THE BOARD TO VOTE