

LEGEND

- Anastasia Island
- Guana River State Wildlife Management Area
- Guana River State Park
- Anastasia State Park
- Ft. Matanzas National Monument
- City of St. Augustine
- City of St. Augustine Beach
- Town of Marineland

GIS Data Sources: St. Johns County GIS Data Library, National Park Service and FDEP Division of Parks and Recreation

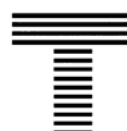
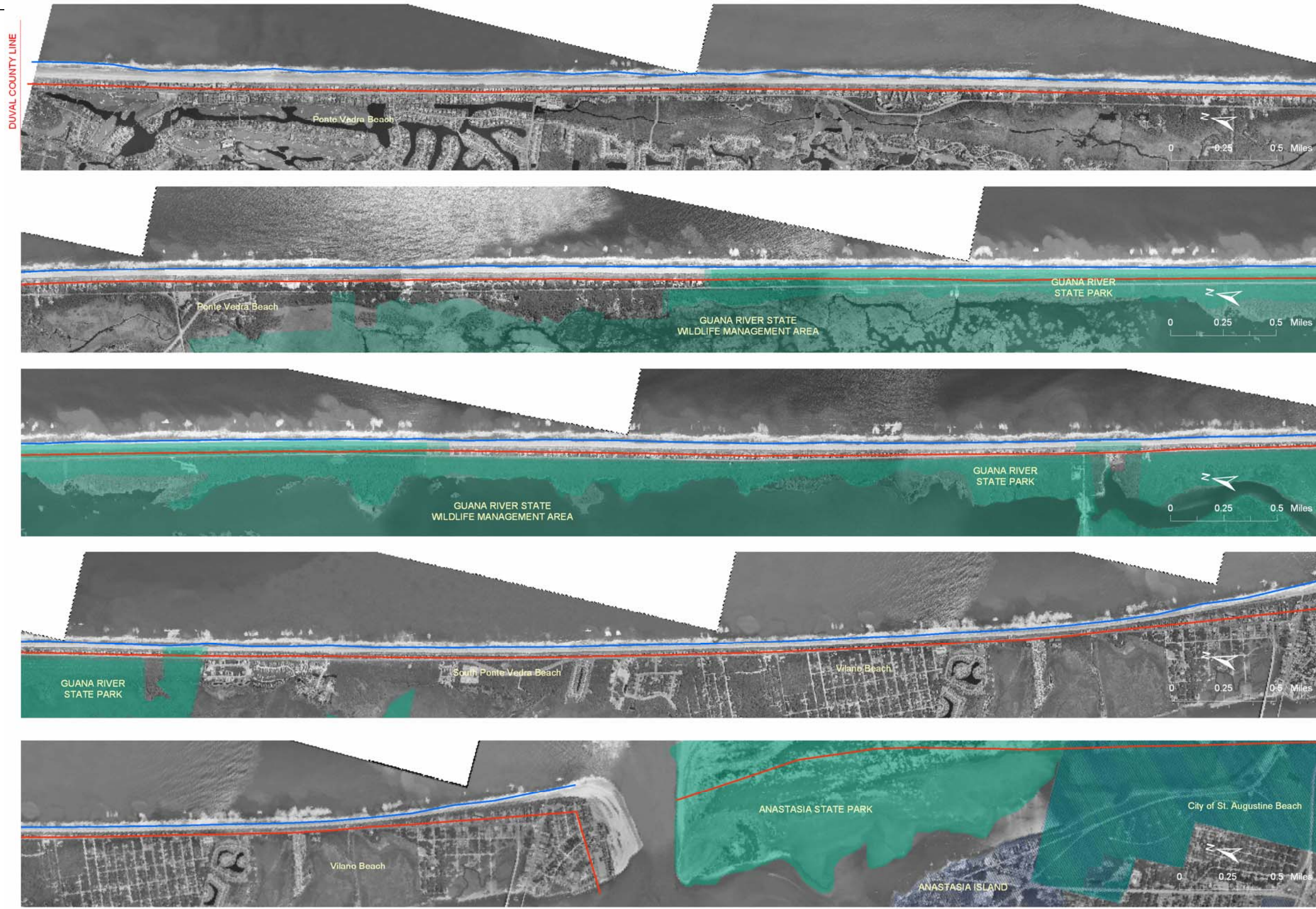
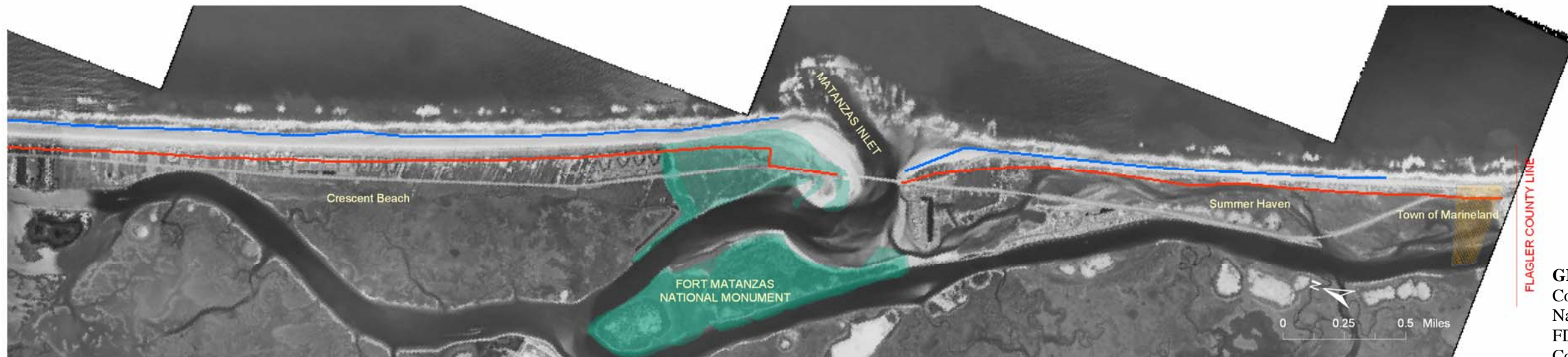
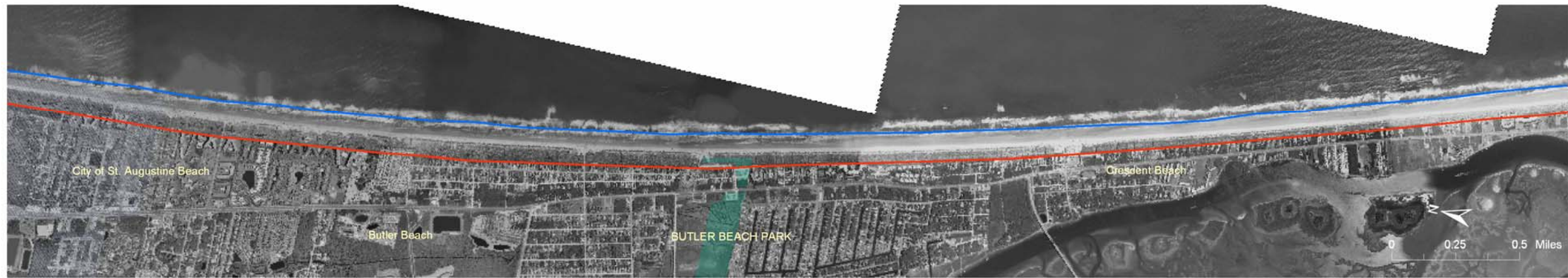
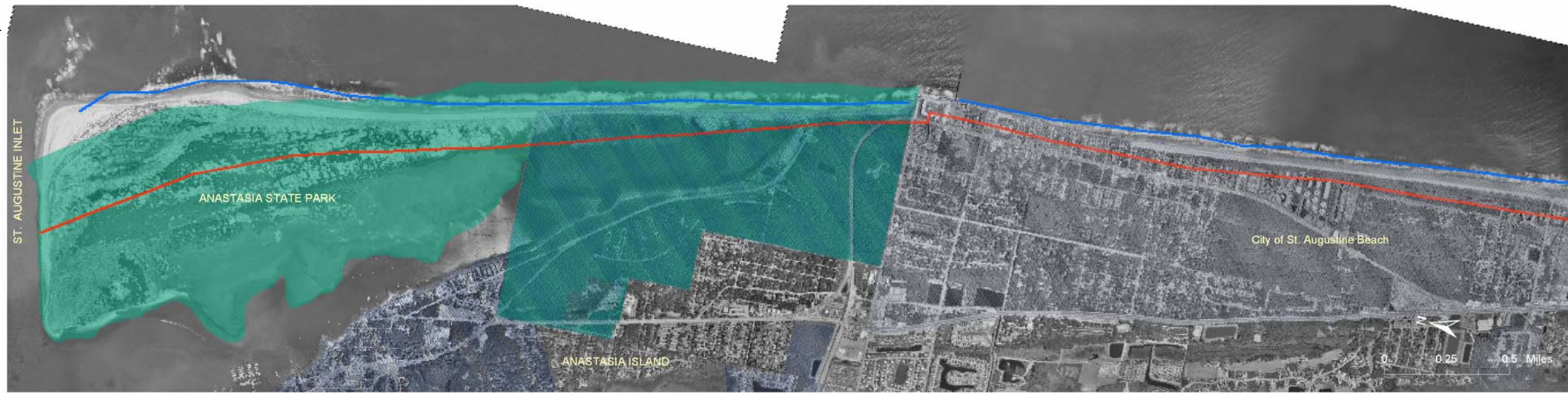
 Taylor Engineering Inc
9000 Cypress Green Dr. Suite 200
Jacksonville, FL 32256

Figure 1-1
Coastline of St. Johns County Showing Municipalities, Unincorporated Communities, and Major Public Conservation Lands.



GIS Data Sources: St. Johns County GIS Data Library, National Park Service FDEP Office of Beaches and Coastal Systems

Figure 1-2a
Boundaries of Plan Area - Duval County Line to St. Augustine Inlet Showing the Coastal Construction Control Line (Red Line) and the Mean Low Water Line (Blue Line).



GIS Data Sources: St. Johns County GIS Data Library, National Park Service, FDEP Office of Beaches and Coastal Systems

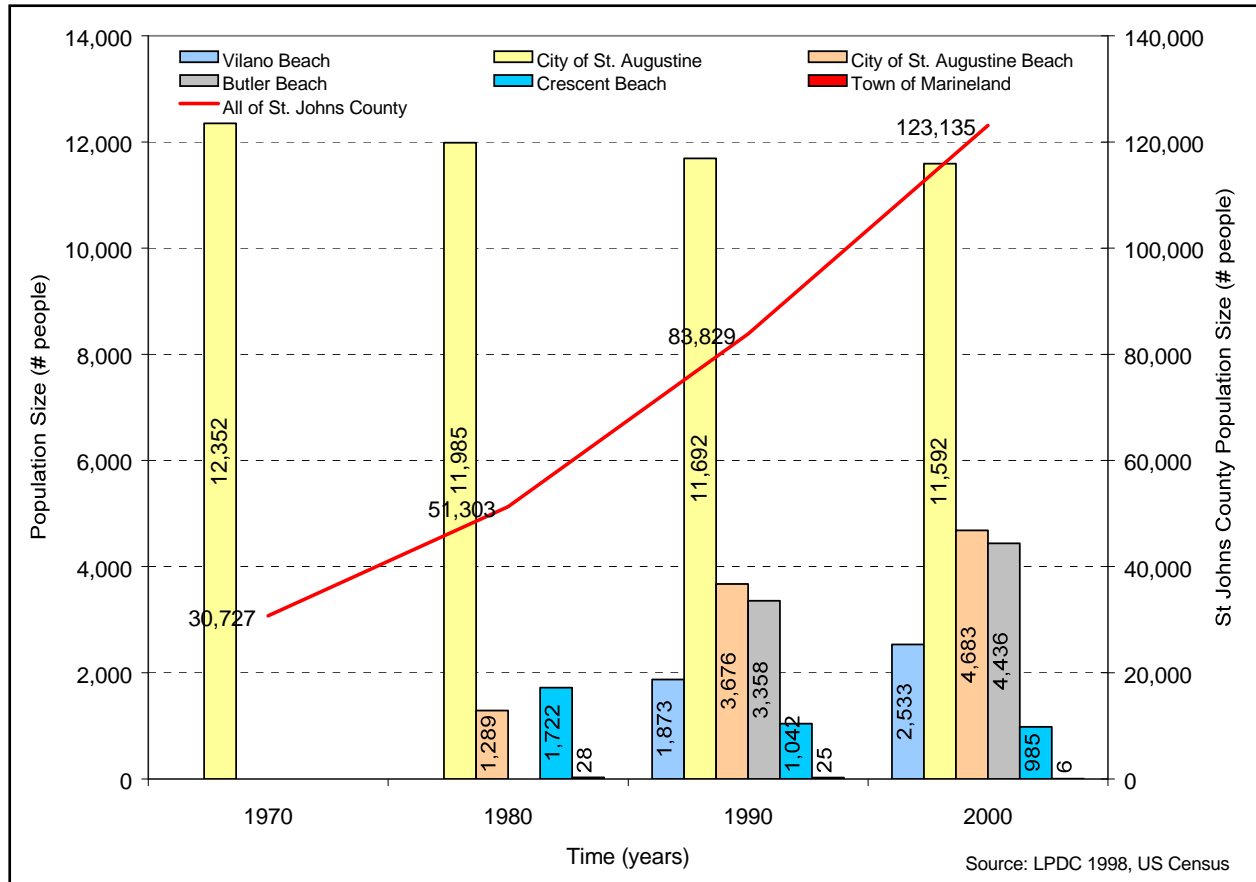


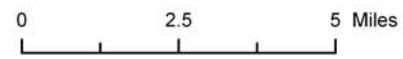
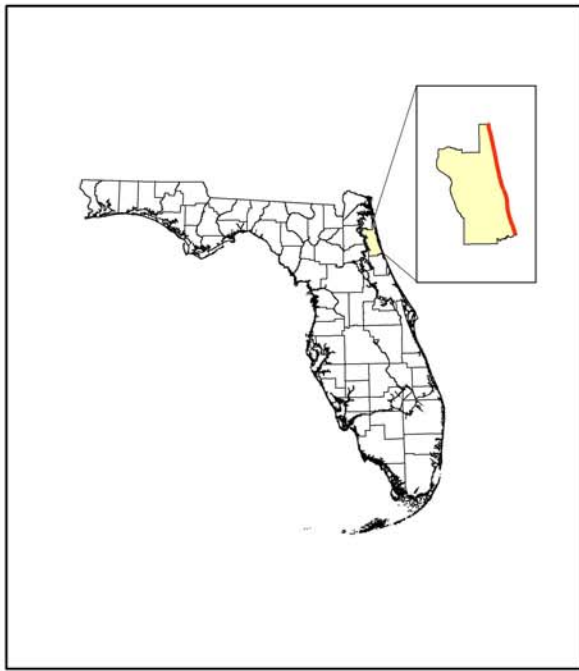
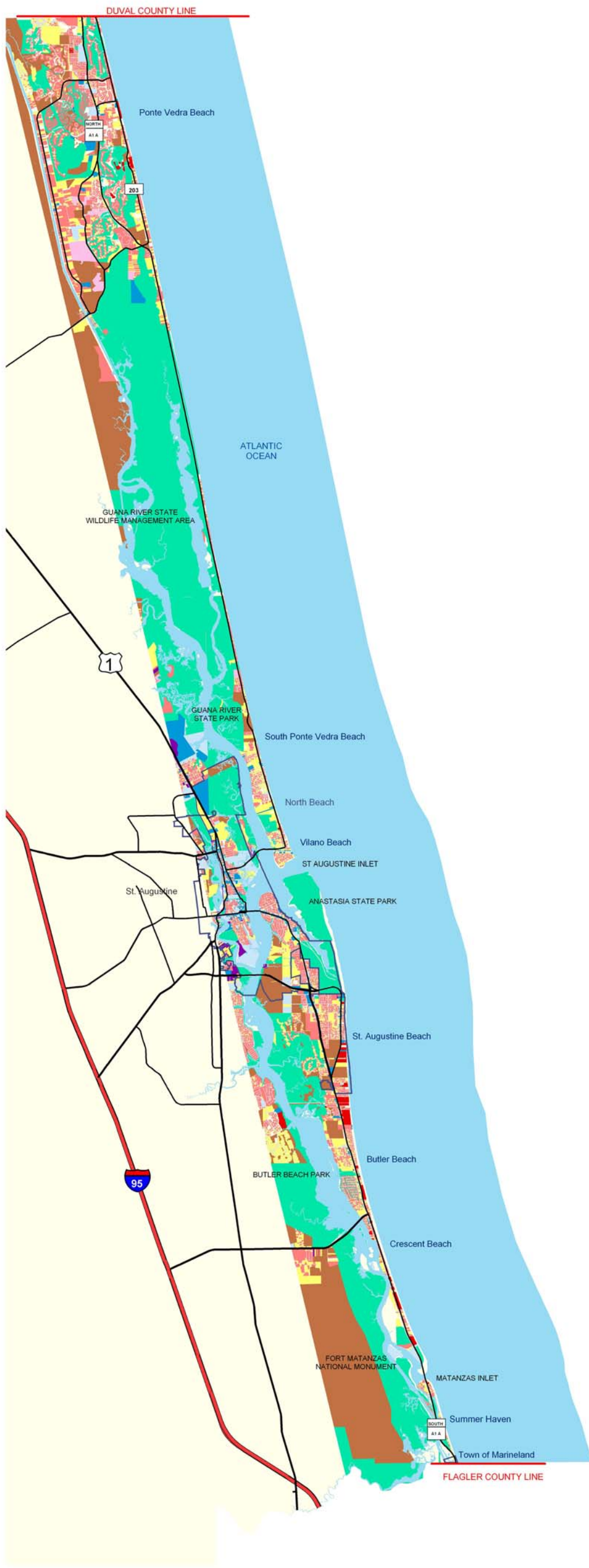
Taylor Engineering Inc
9000 Cypress Green Dr. Suite 200
Jacksonville, FL 32256

Figure 1-2b
Boundaries of Plan Area - St. Augustine Inlet to Flagler County Line Showing the Coastal Construction Control Line (Red Line) and the Mean Low Water Line (Blue Line).

Figure 2-1

Historical and Current Population for St. Johns County, Municipalities, and Unincorporated Areas.





- LEGEND**
- LANDUSE 1996
- Agriculture and Forest
 - Recreation and Open Space
 - Vacant
 - In Construction
 - High-density Residential
 - Low/Medium-density Residential
 - Commercial
 - Industrial
 - Institutional
 - Rights-of-way
 - Water

GIS Data Sources: St. Johns County GIS Data Library


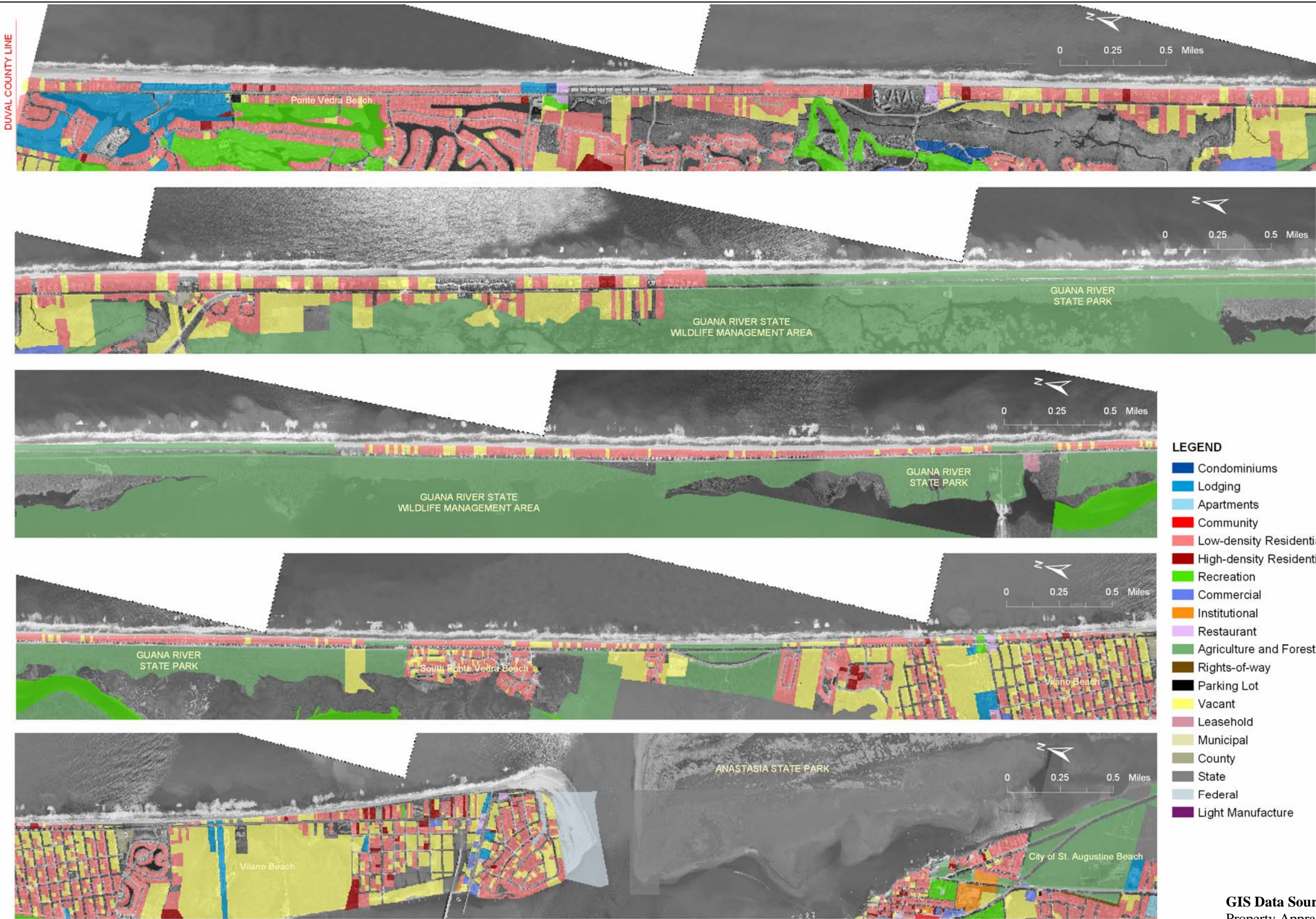
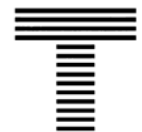

 Taylor Engineering Inc
 9000 Cypress Green Dr. Suite 200
 Jacksonville, FL 32256

Figure 2-2
1996 Land Use Patterns in St. Johns County.



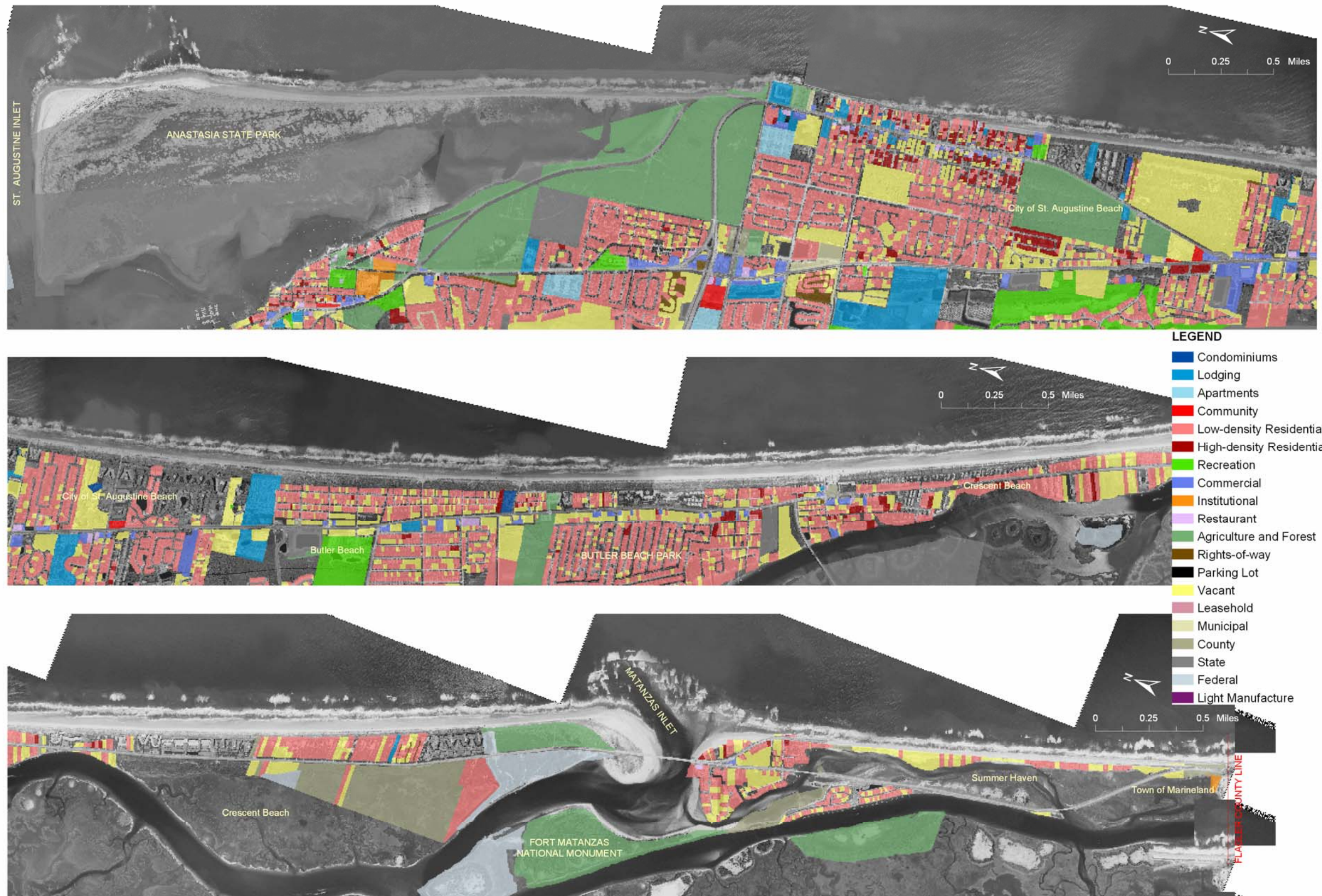
NOTE: DATA MAY BE MISSING

GIS Data Sources: St. Johns County
Property Appraisers Office



Taylor Engineering Inc
9000 Cypress Green Dr. Suite 200
Jacksonville, FL 32256

Figure 2-3a
2000 Land Use Patterns in St Johns County - Duval County Line to St. Augustine Inlet.



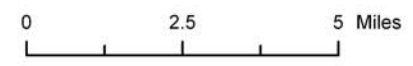
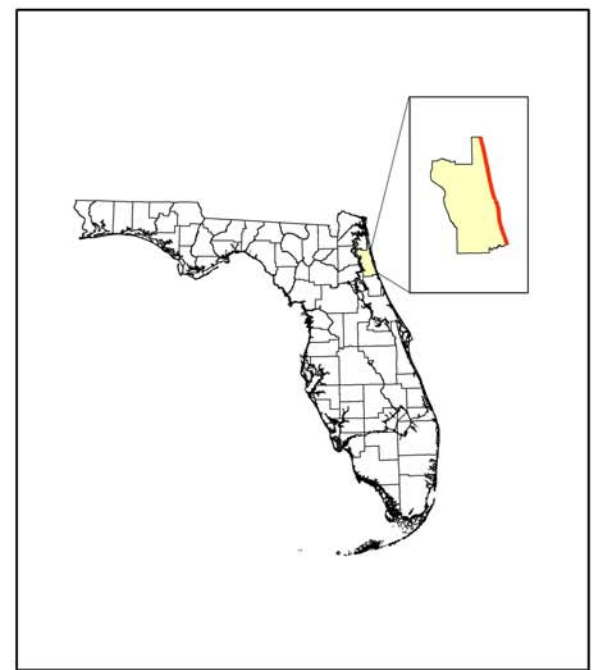
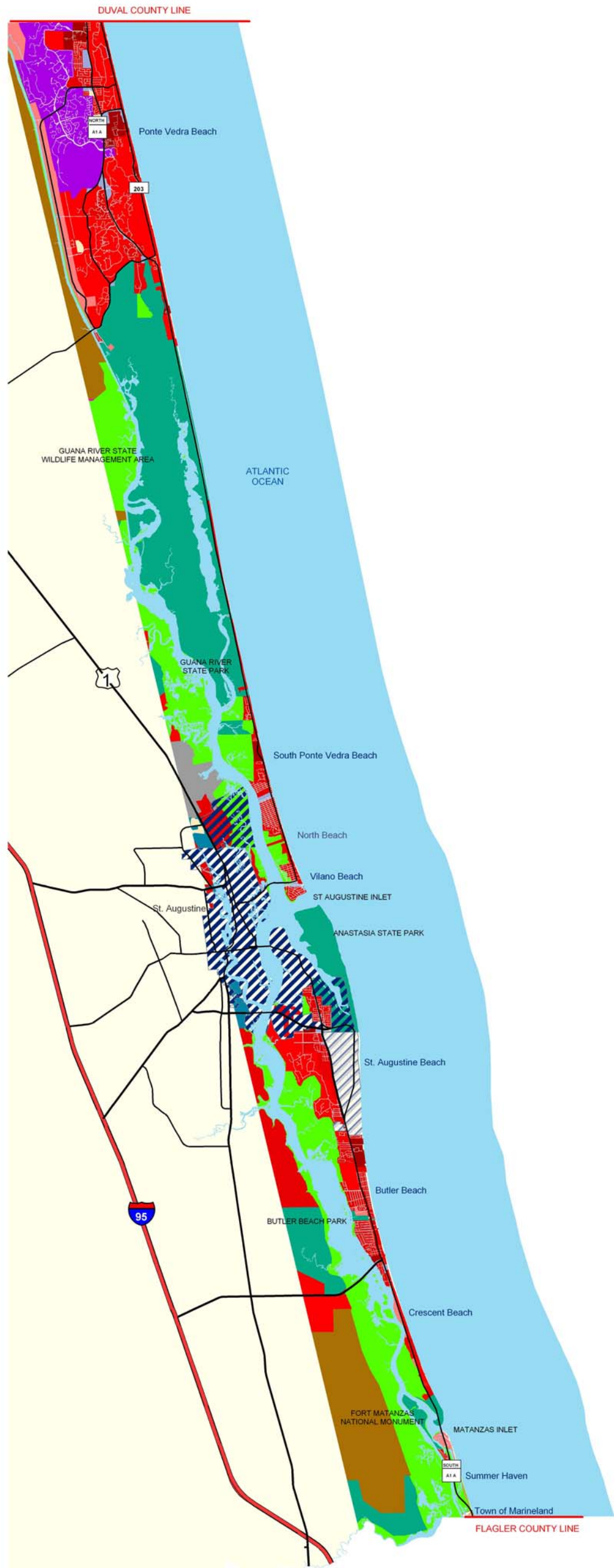
NOTE: DATA MAY BE MISSING

GIS Data Sources: St. Johns County Property Appraisers Office



Taylor Engineering Inc
 9000 Cypress Green Dr. Suite 200
 Jacksonville, FL 32256

Figure 2-3b
2000 Land Use Patterns in St Johns County - St. Augustine Inlet to Flagler County Line.



LEGEND

- FUTURE LANDUSE**
- Residential (0.4-1.0 DU/acre)
 - Residential (2.0-2.0 DU/acre)
 - Residential (2.0-4.0 DU/acre)
 - Residential (4.0-8.0 DU/acre)
 - Public
 - Conservation
 - Parks/Recreation
 - Right-of-way
 - Airport District
 - Commercial
 - Mixed Use District
 - Rural Silviculture
 - New Town
 - Caballos Del Mar DRI
 - City of St. Augustine
 - City of St. Augustine Beach
 - Town of Marineland
 - Water

GIS Data Sources: St. Johns County GIS Data Library

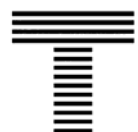

 Taylor Engineering Inc
 9000 Cypress Green Dr. Suite 200
 Jacksonville, FL 32256

Figure 2-4
Future Land Use Patterns in St. Johns County.

Figure 2-5

Single- and Multi-family Building Permits and Construction Starts in St. Johns County.

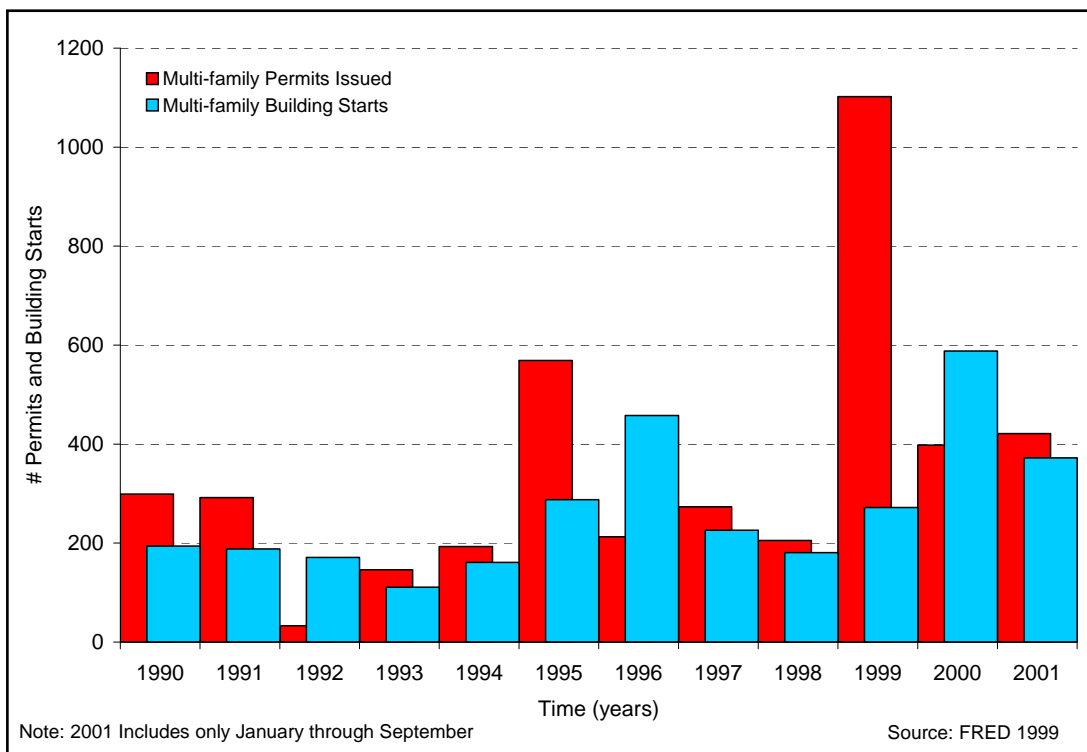
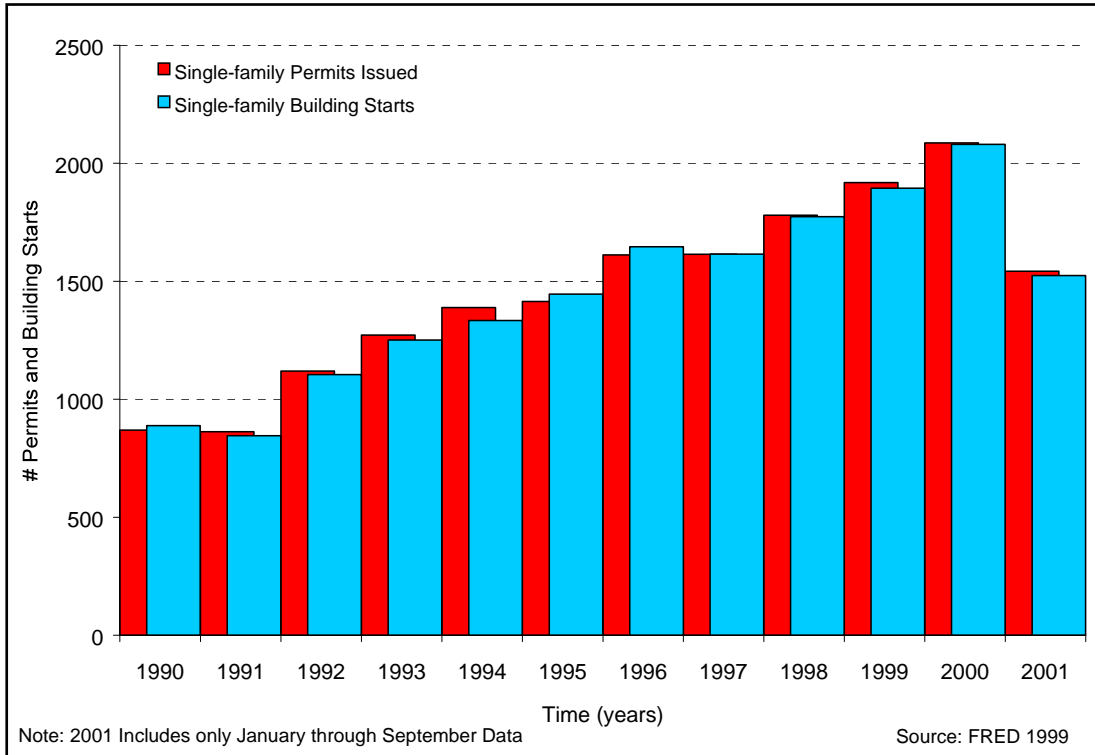
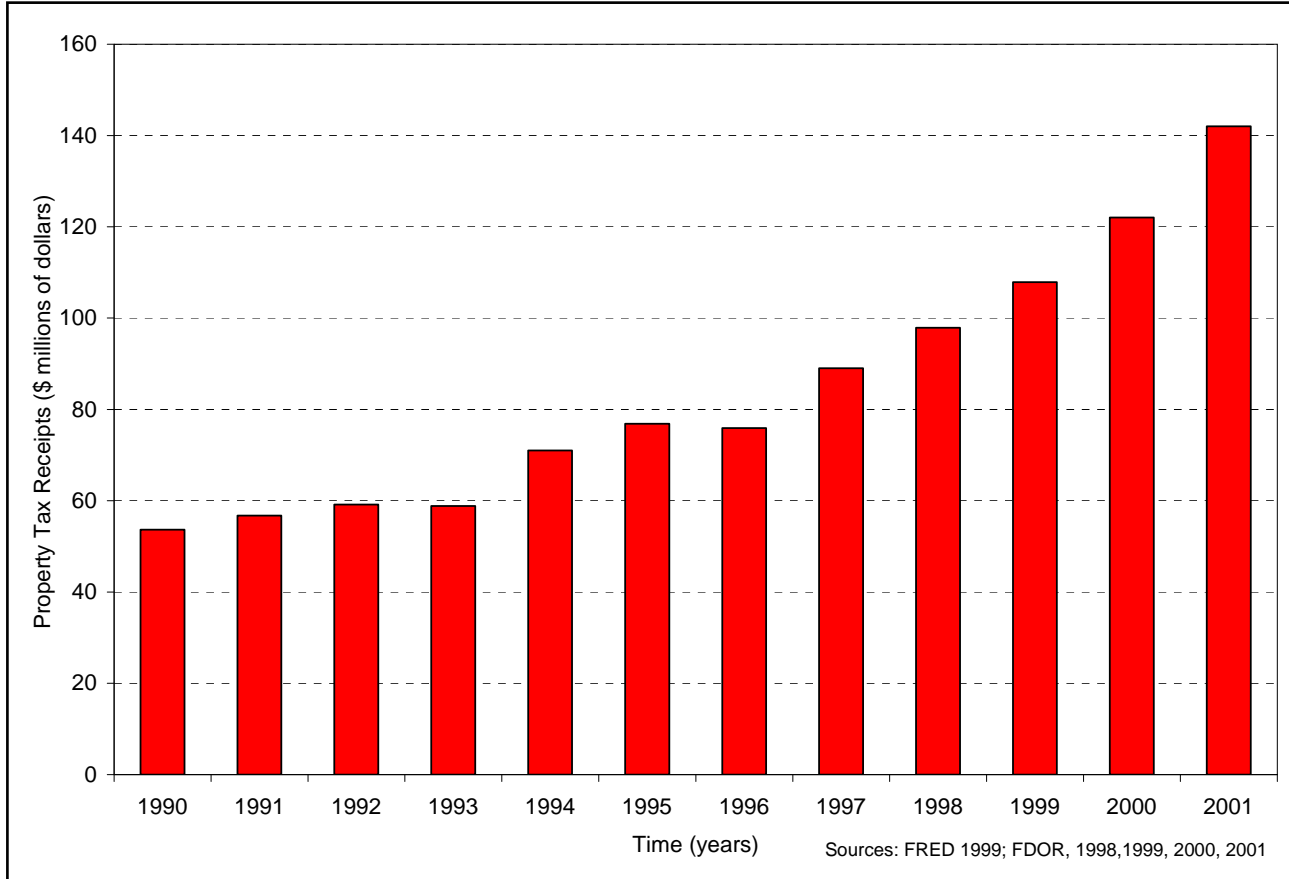
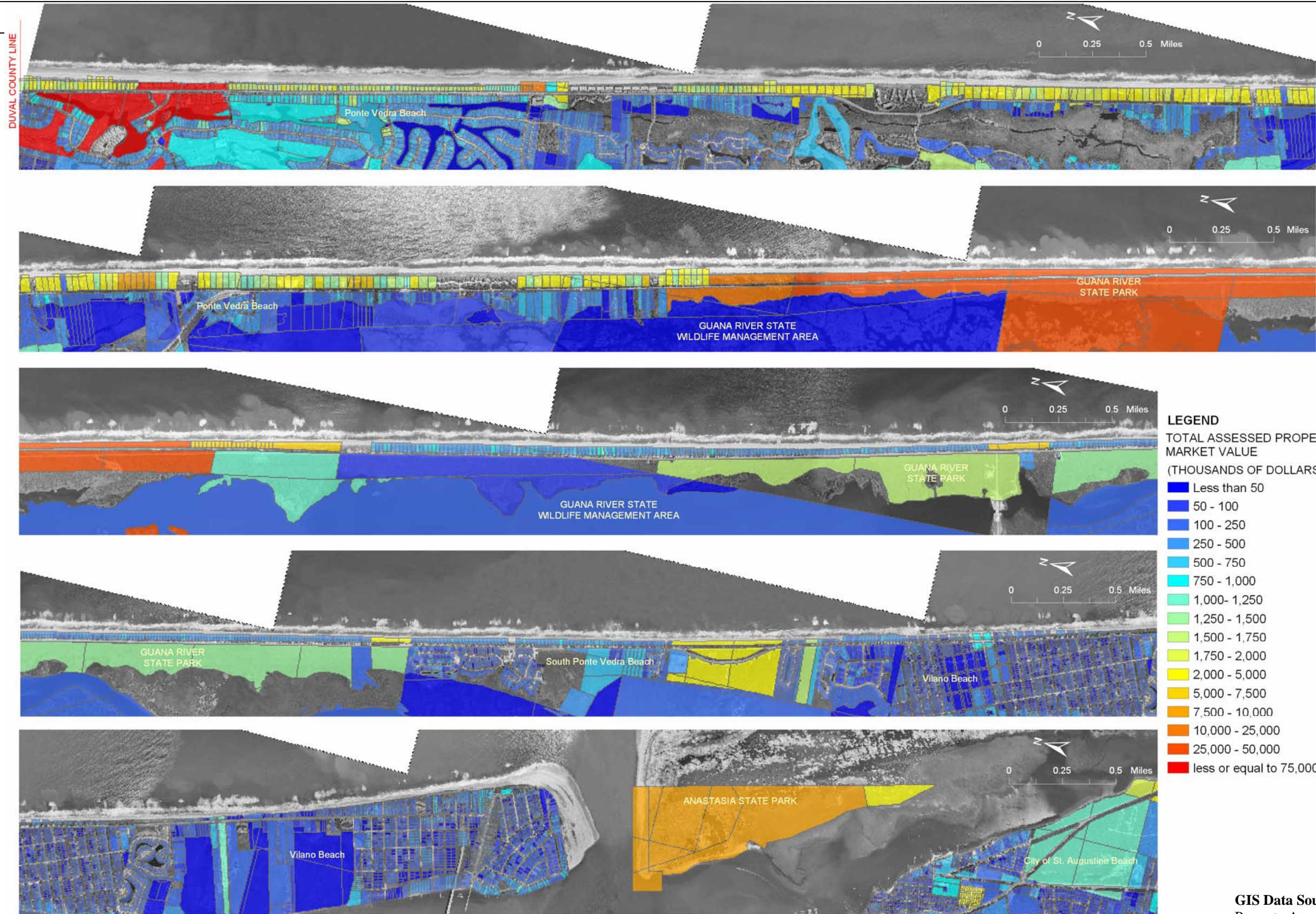


Figure 2-6

Property Tax Receipts for St. Johns County.

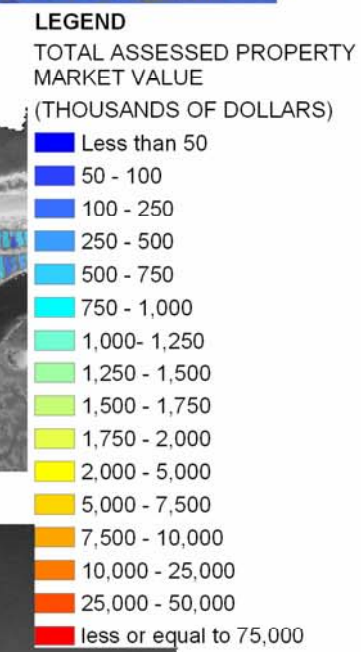
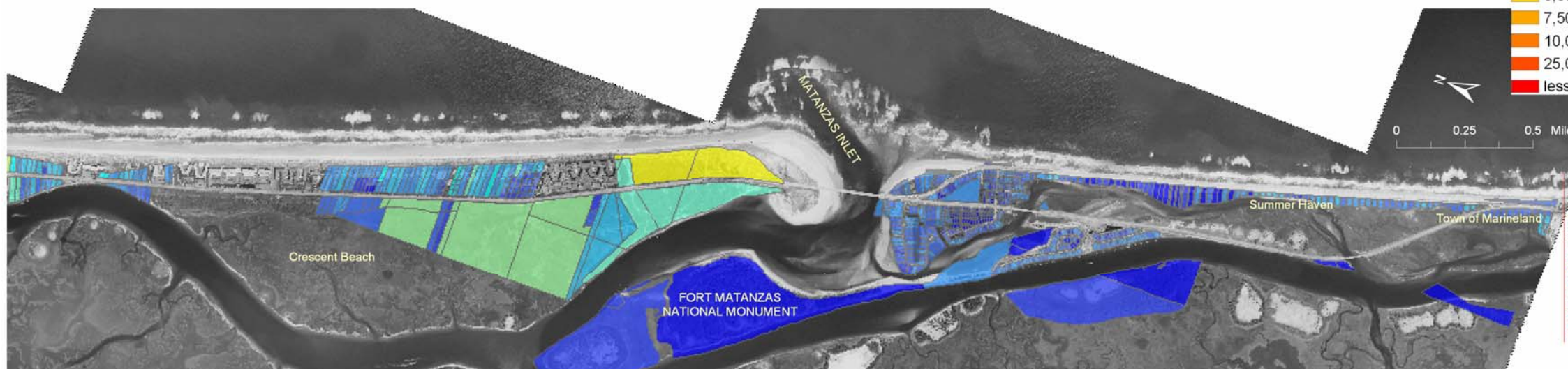
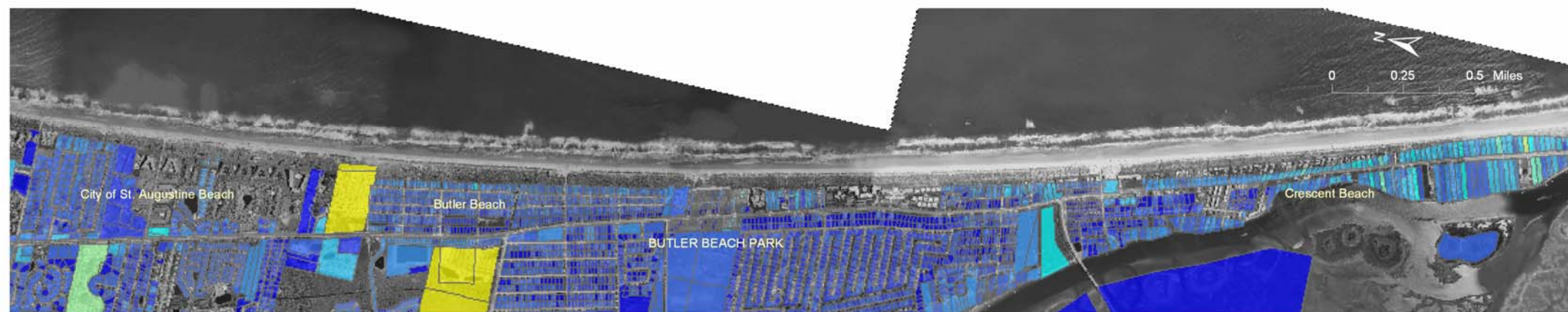
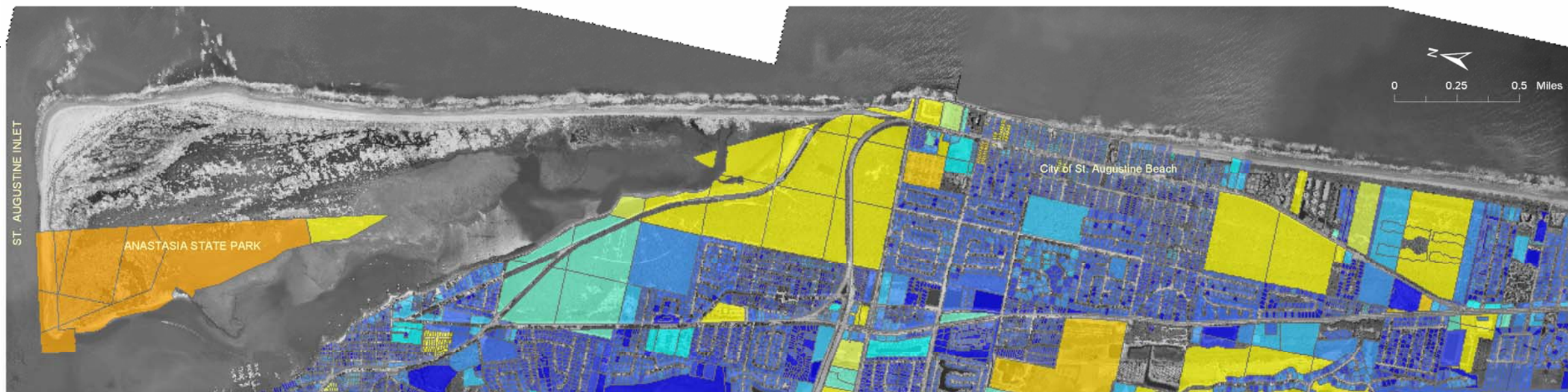




NOTE: DATA MAY BE MISSING

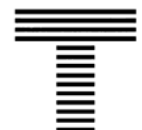
GIS Data Sources: St. Johns County Property Appraisers Office

Figure 2-7a
2001 Total Appraised Property Market Value for Coastal Properties in the St. Johns County - Duval County Line to St. Augustine Inlet.



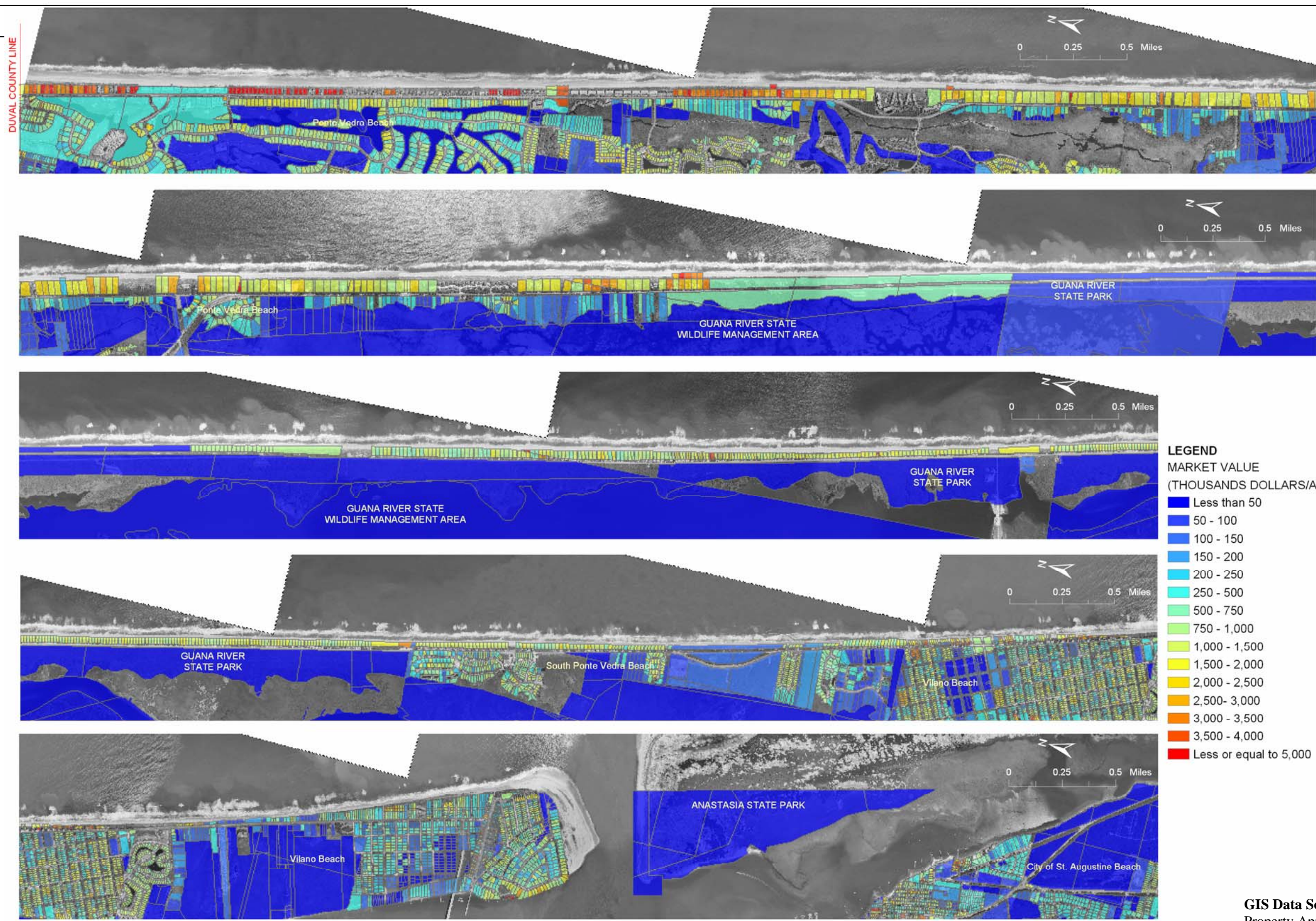
NOTE: DATA MAY BE MISSING

GIS Data Sources: St. Johns County Property Appraisers Office



Taylor Engineering Inc
 9000 Cypress Green Dr. Suite 200
 Jacksonville, FL 32256

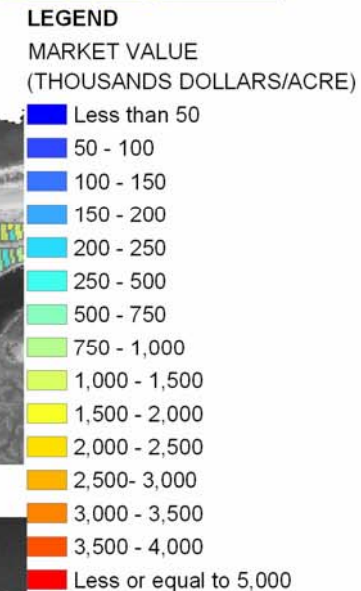
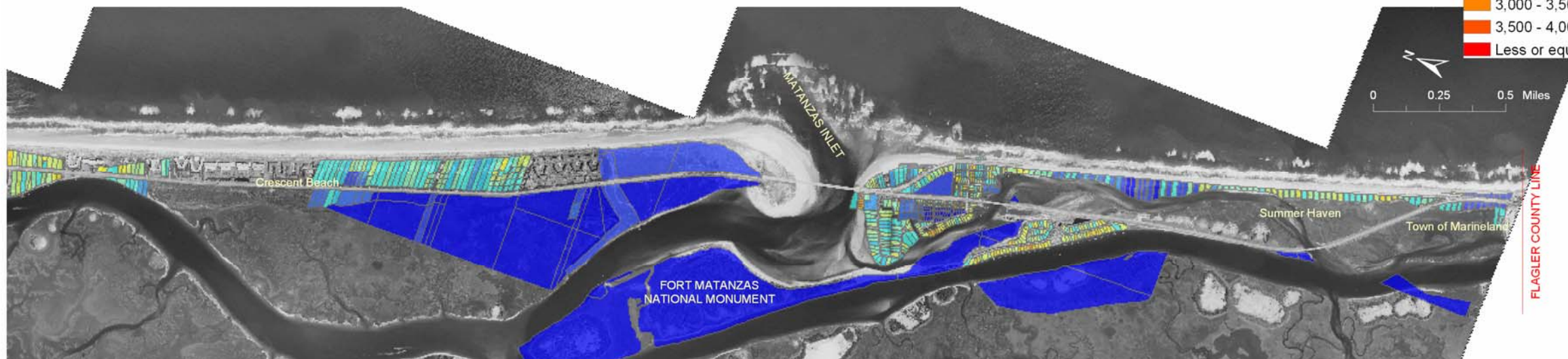
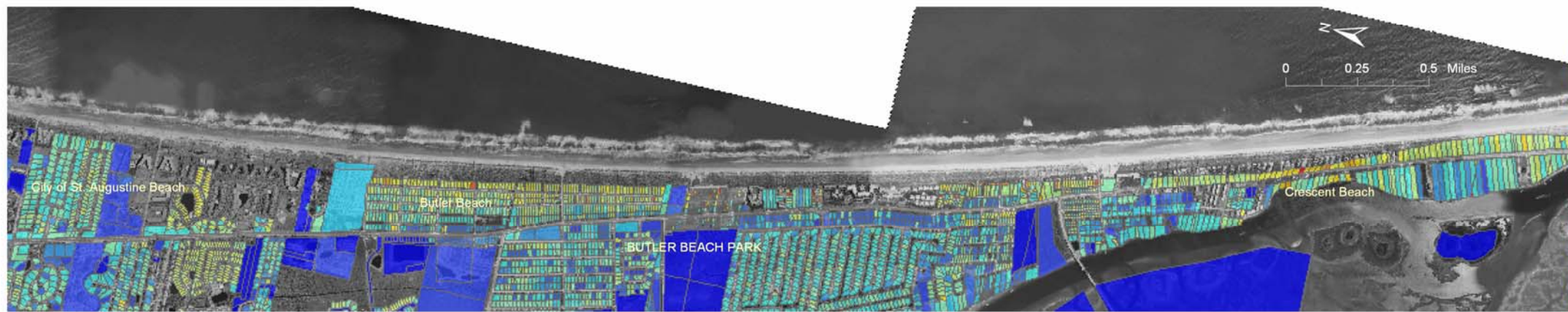
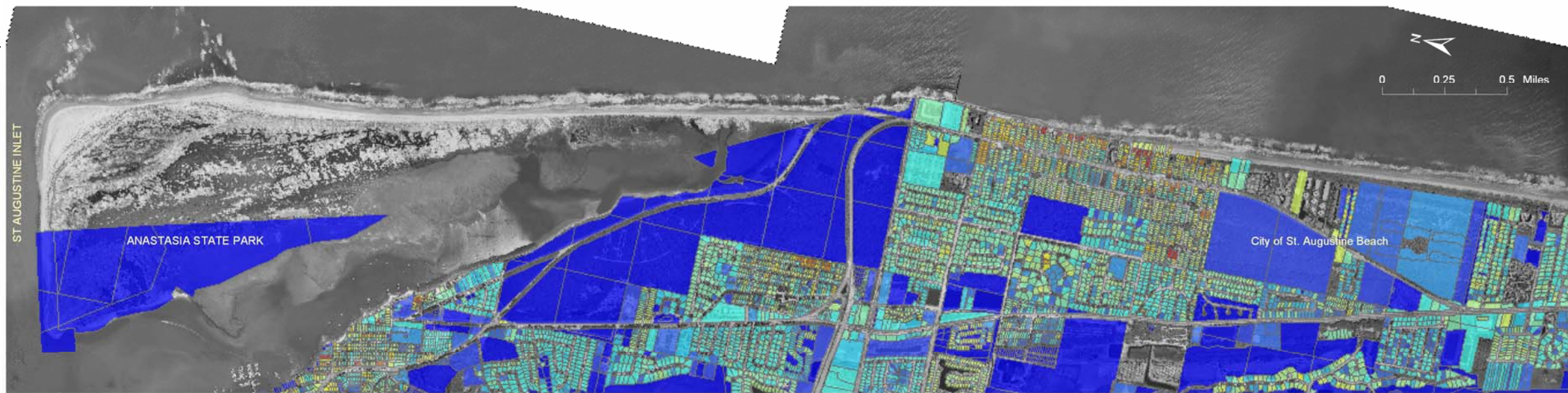
Figure 2-7b
2001 Total Appraised Property Market Value for Coastal Properties in the St. Johns County - St. Augustine Inlet to Flagler County Line.



NOTE: DATA MAY BE MISSING

GIS Data Sources: St. Johns County Property Appraisers Office

Figure 2-8a
2001 Property Market Value per Acre in St. Johns County - Duval County Line to St. Augustine Inlet.



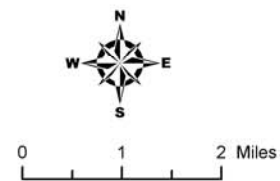
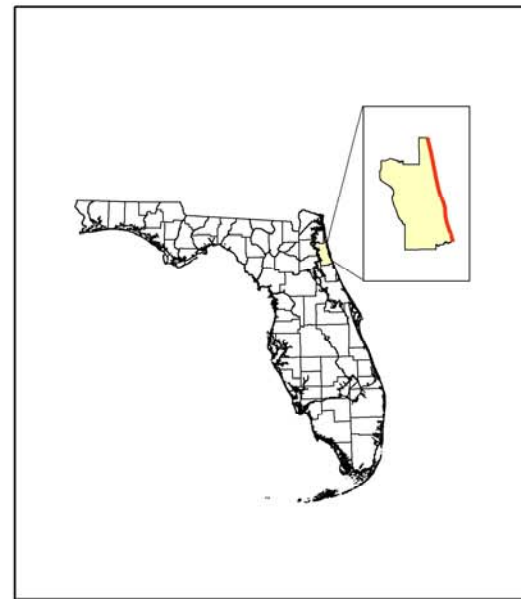
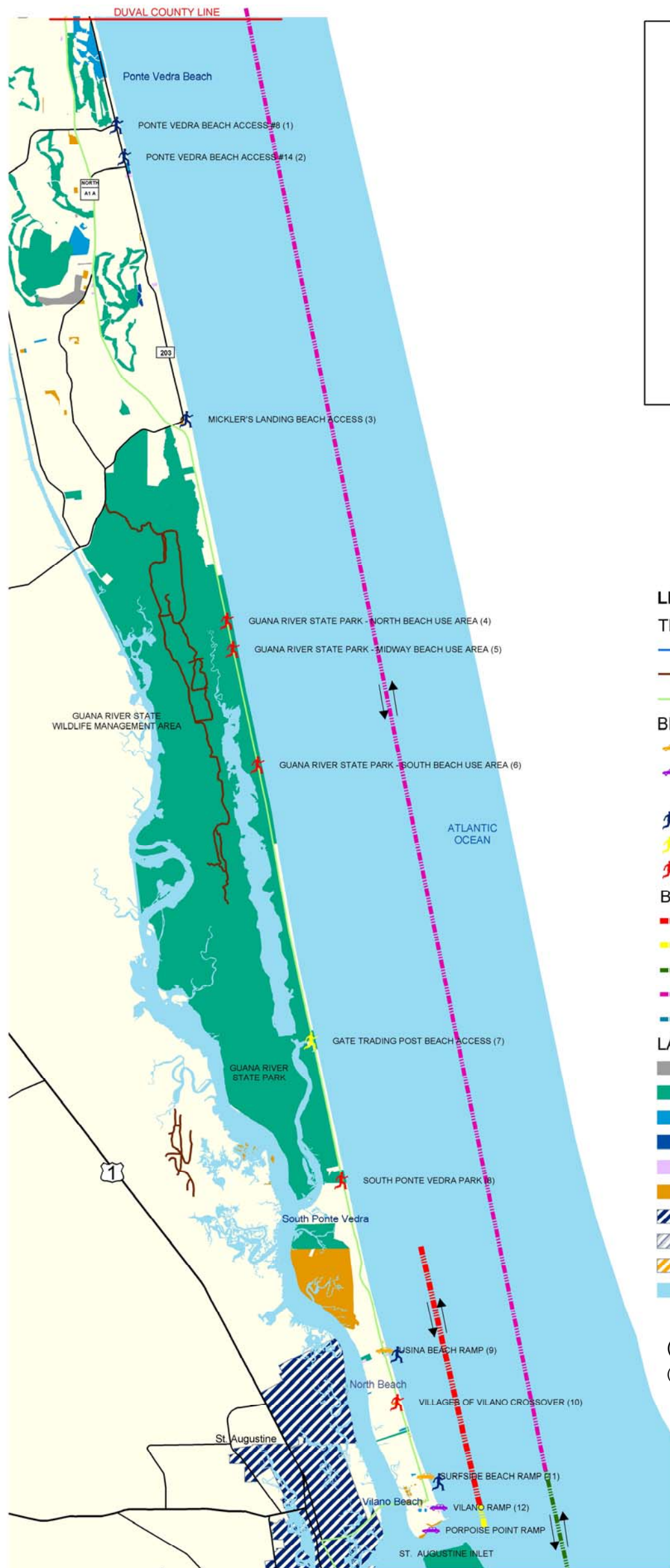
NOTE: DATA MAY BE MISSING

GIS Data Sources: St. Johns County Property Appraisers Office



Taylor Engineering Inc
 9000 Cypress Green Dr. Suite 200
 Jacksonville, FL 32256

Figure 2-8b
2001 Property Market Value per Acre in St. Johns County - St. Augustine Inlet to Flagler County Line.



LEGEND

TRAILS

- Aquatic
- Land
- Scenic Highway

BEACH ACCESS

- Authorized Vehicle Access Point (*)
- Authorized Vehicle Access Point (*) with Tollbooth (Mar 1 to Labor Day)
- Pedestrian Walkover
- Pedestrian Footpath with Parking (**)
- Pedestrian Walkover with Parking (**)

BEACH USES

- 4x4 Permit Beach Driving
- General Public Beach Driving
- Beach Horseback Riding (Nov1- Apr 30)
- Beach Horseback Riding (Year Round)
- Local Resident Or Old A1A Beach Driving

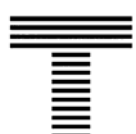
LANDUSE

- Parking
- Recreation
- Lodging
- Condo
- Restaurant
- Public Lands
- City of St. Augustine
- City of St. Augustine Beach
- Town of Marineland
- Water

(*) ACCESS POINT MAY BE INACTIVE

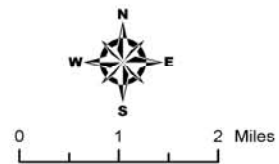
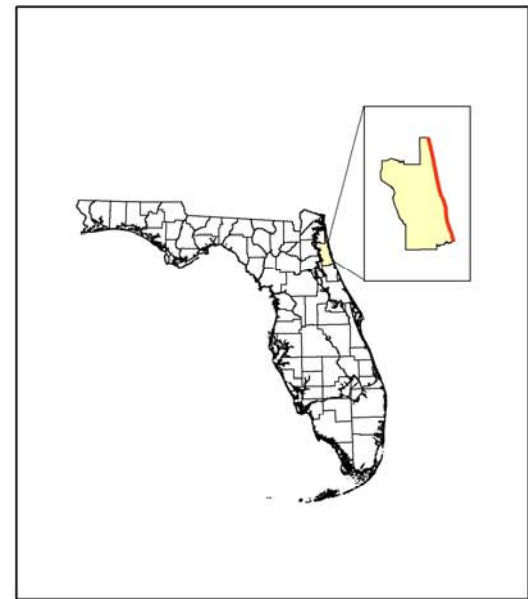
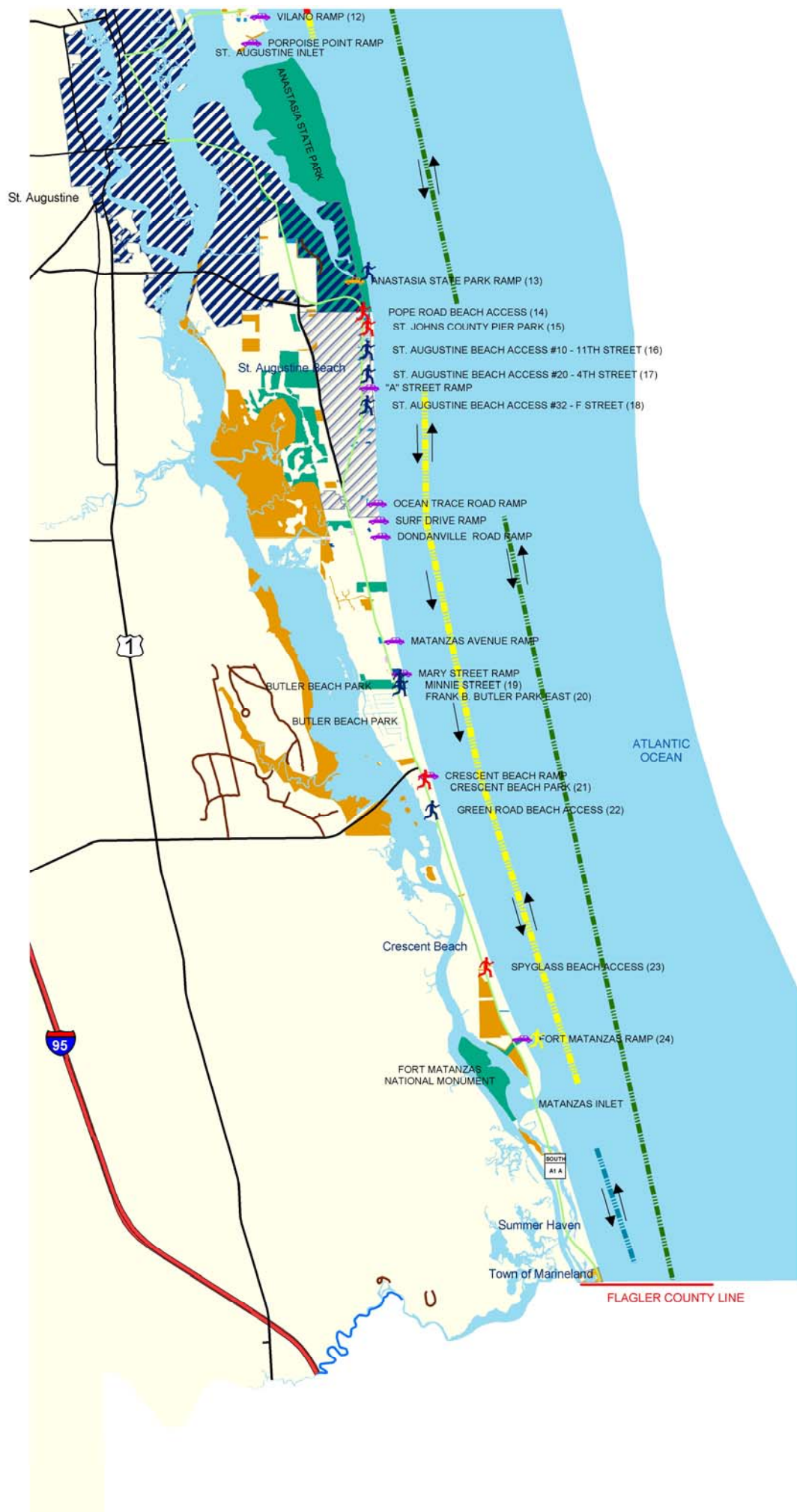
(**) SEE TABLE 1-2 FOR DETAILS

GIS Data Sources: St. Johns County GIS Data Library, Florida Geographic Data Library, St. Johns County Property Appraisers Office, Taylor Engineering Inc.



Taylor Engineering Inc
9000 Cypress Green Dr. Suite 200
Jacksonville, FL 32256

Figure 2-9a
Recreational Opportunities in Coastal St. Johns County –
Duval County Line to St. Augustine Inlet.



LEGEND

TRAILS

- Aquatic
- Land
- Scenic Highway

BEACH ACCESS

- Authorized Vehicle Access Point (*)
- Authorized Vehicle Access Point (*) with Tollbooth (Mar1 to Labor Day)
- Pedestrian Walkover
- Pedestrian Footpath with Parking (**)
- Pedestrian Walkover with Parking (**)

BEACH USES

- 4x4 Permit Beach Driving
- General Public Beach Driving
- Beach Horseback Riding (Nov1- Apr 30)
- Beach Horseback Riding (Year Round)
- Local Resident Or Old A1A Beach Driving

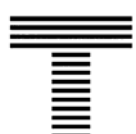
LANDUSE

- Parking
- Recreation
- Lodging
- Condo
- Restaurant
- Public Lands
- City of St. Augustine
- City of St. Augustine Beach
- Town of Marineland
- Water

(*) ACCESS POINT MAY BE INACTIVE

(**) SEE TABLE 1-2 FOR DETAILS

GIS Data Sources: St. Johns County GIS Data Library, Florida Geographic Data Library, St. Johns County Property Appraisers Office, Taylor Engineering Inc.

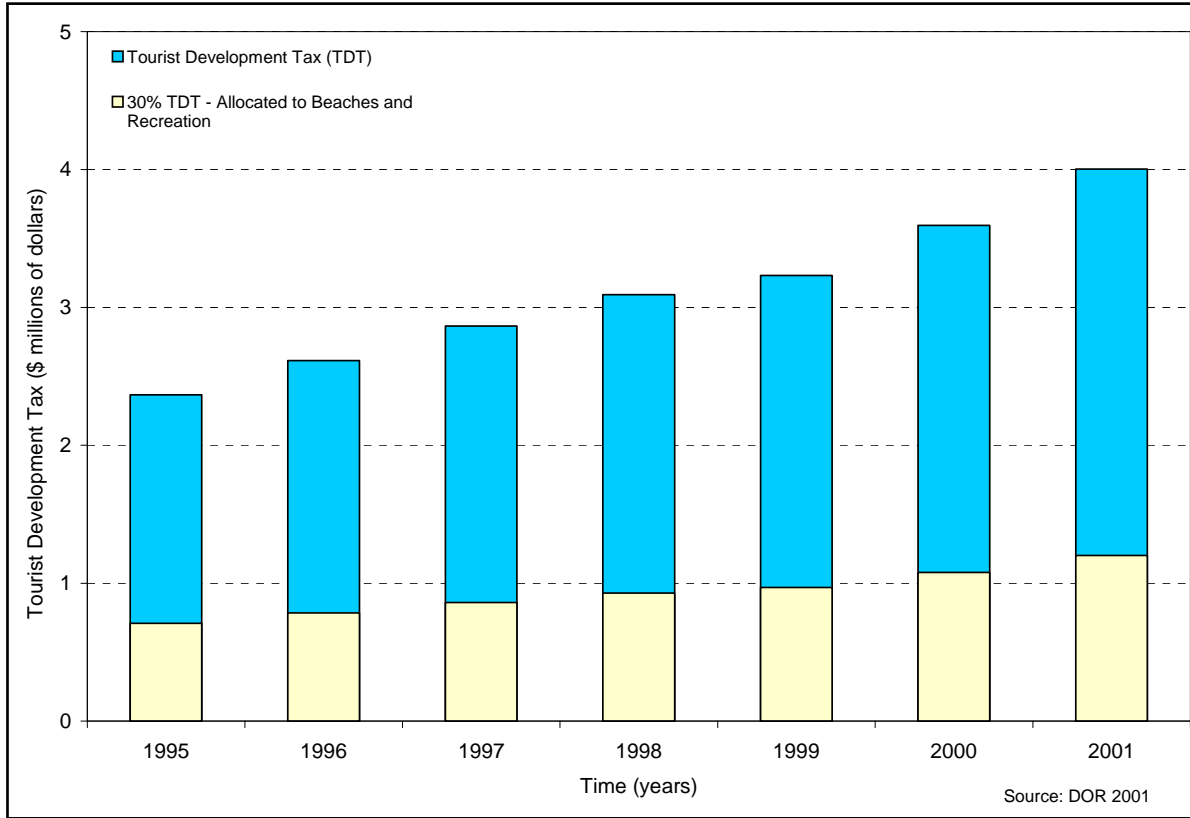


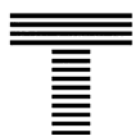
Taylor Engineering Inc
9000 Cypress Green Dr. Suite 200
Jacksonville, FL 32256

Figure 2-9b
Recreational Opportunities in Coastal St. Johns County –
St. Augustine Inlet to Flagler County Line

Figure 2-10

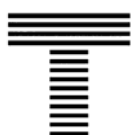
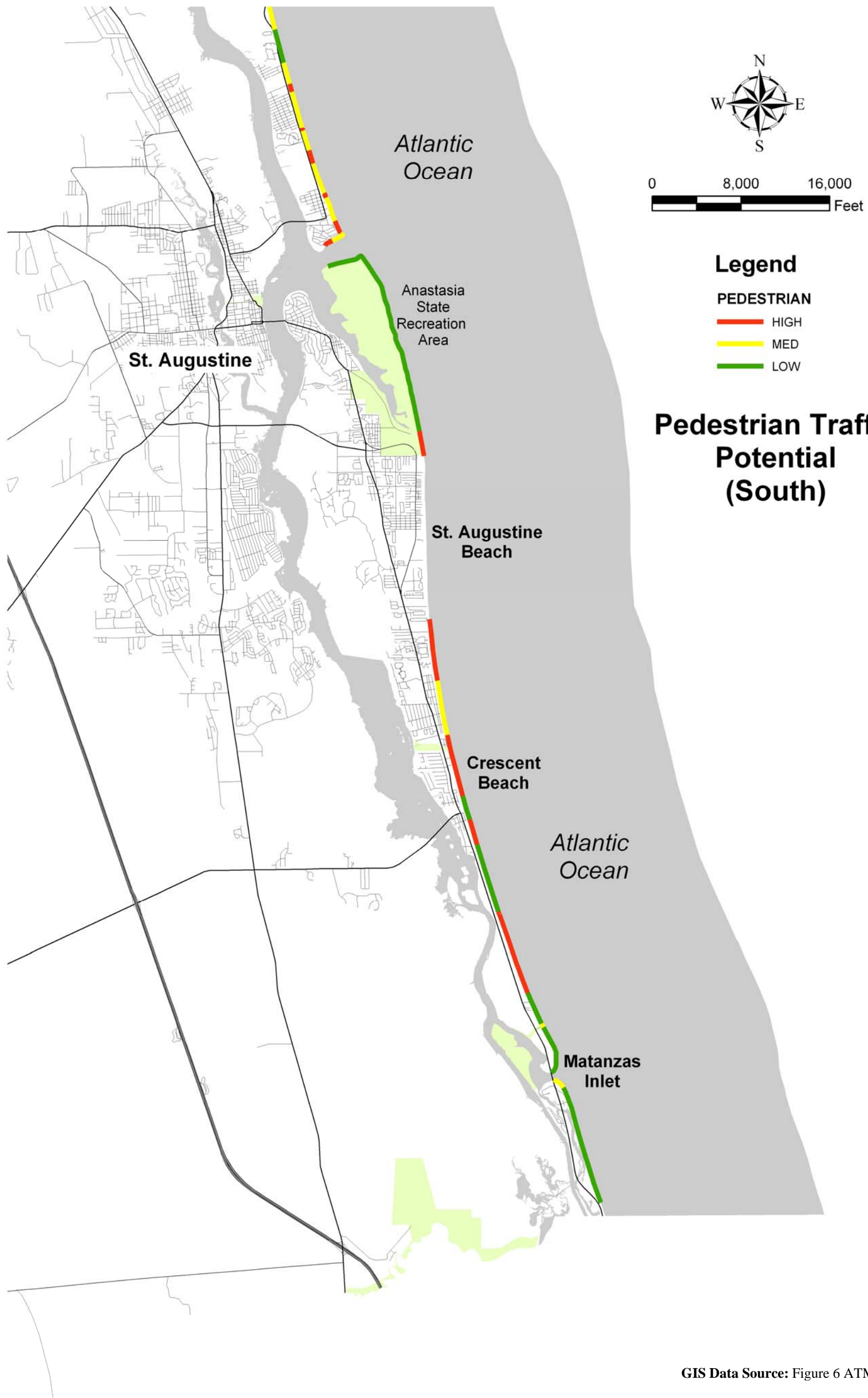
Tourist Development Tax Receipts for St. Johns County.





Taylor Engineering Inc
 9000 Cypress Green Dr. Suite 200
 Jacksonville, FL 32256

Figure 2-11a
Pedestrian Traffic Potential on Unincorporated Beaches of St. Johns
County – Duval County Line to St. Augustine Inlet.

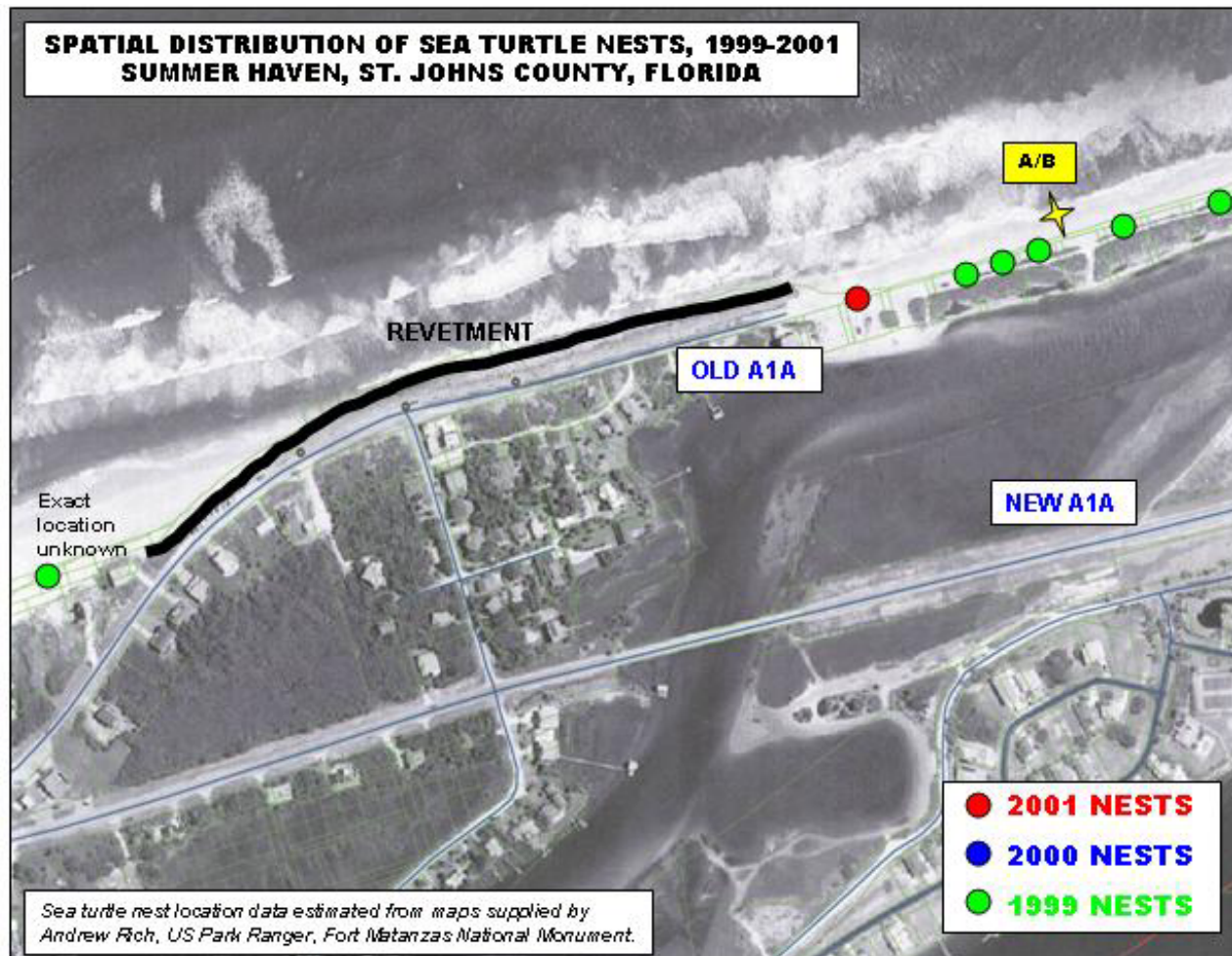


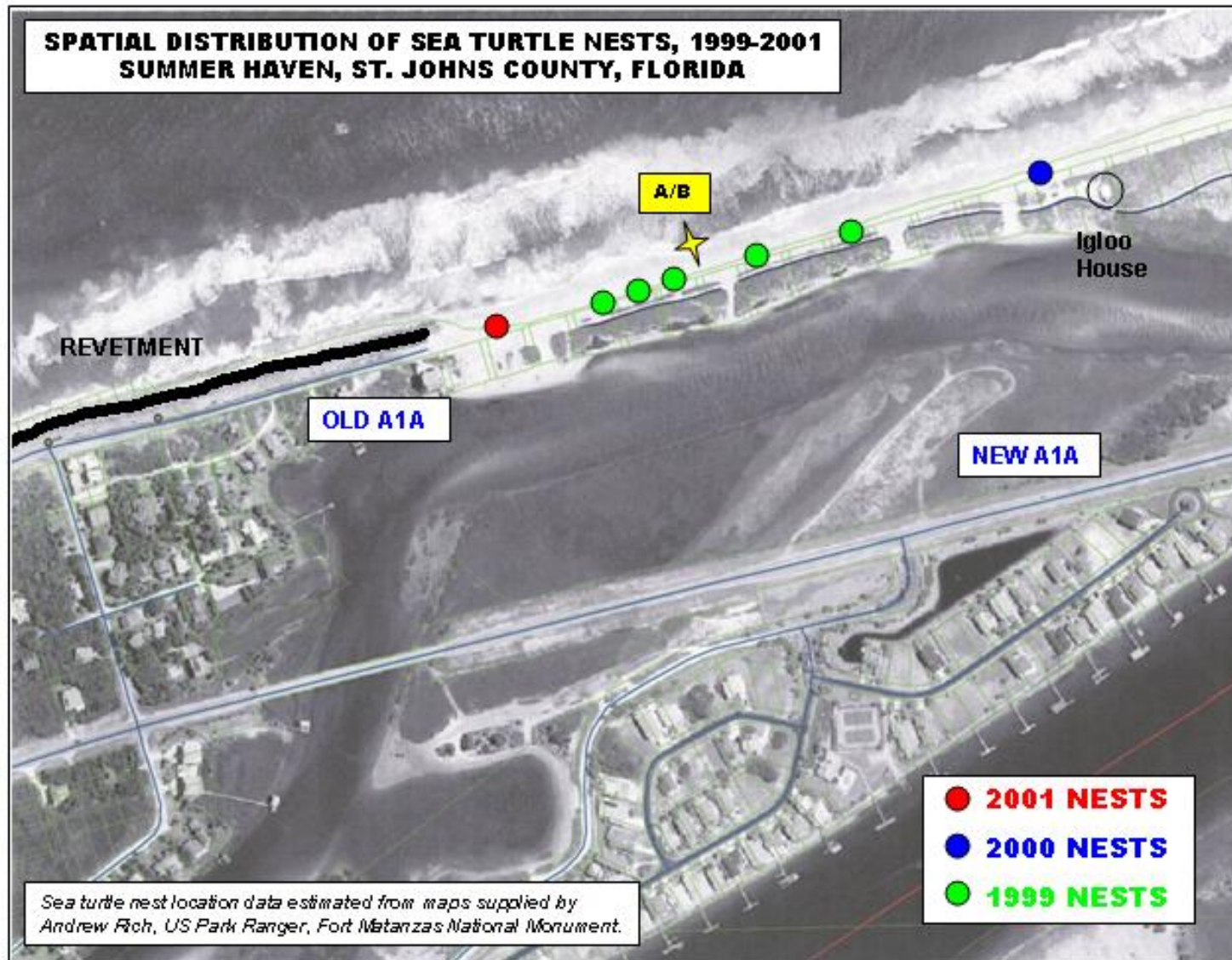
Taylor Engineering Inc
 9000 Cypress Green Dr. Suite 200
 Jacksonville, FL 32256

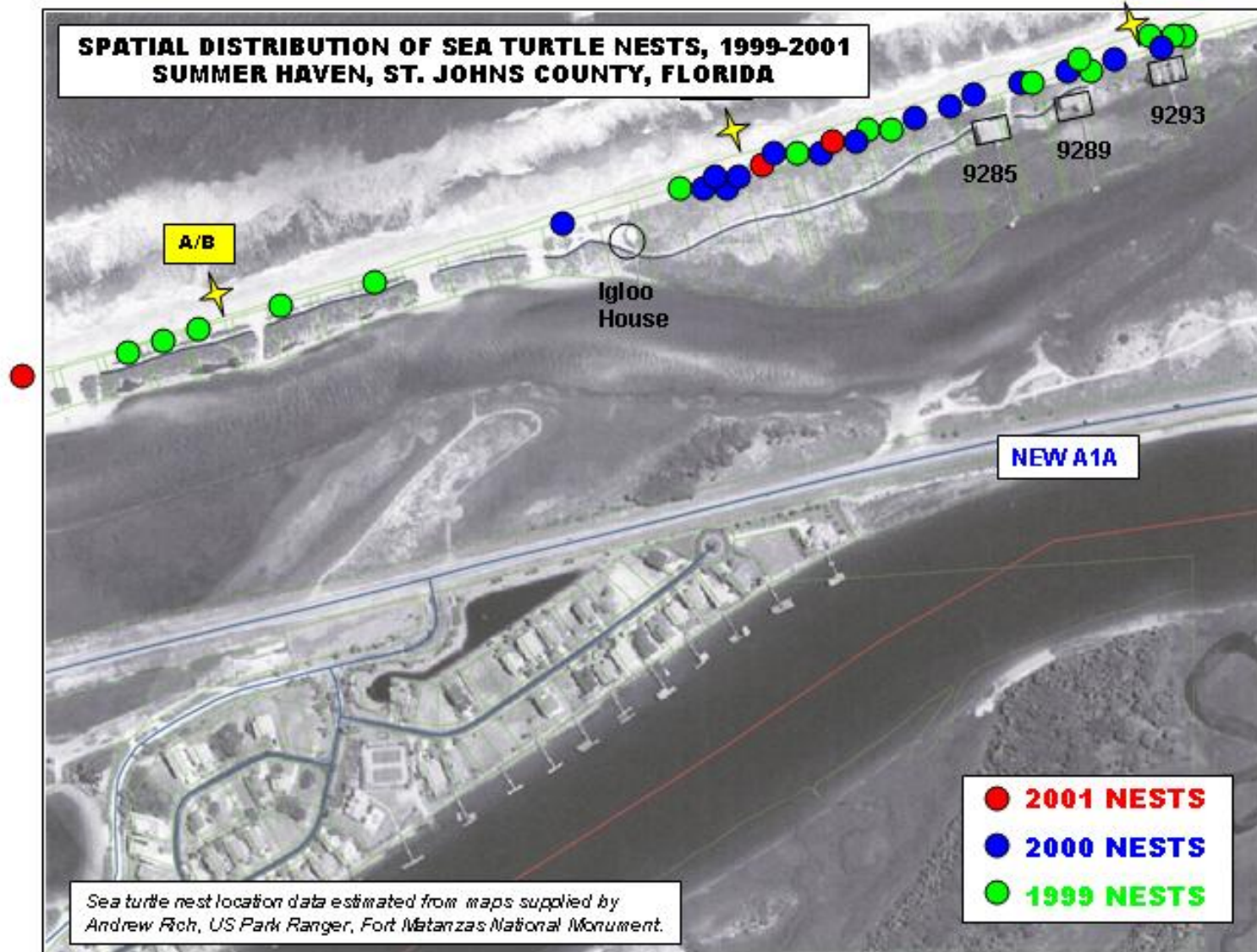
Figure 2-11b
Pedestrian Traffic Potential on Unincorporated Beaches of St. Johns County
–St. Augustine Inlet to Flagler County Line.

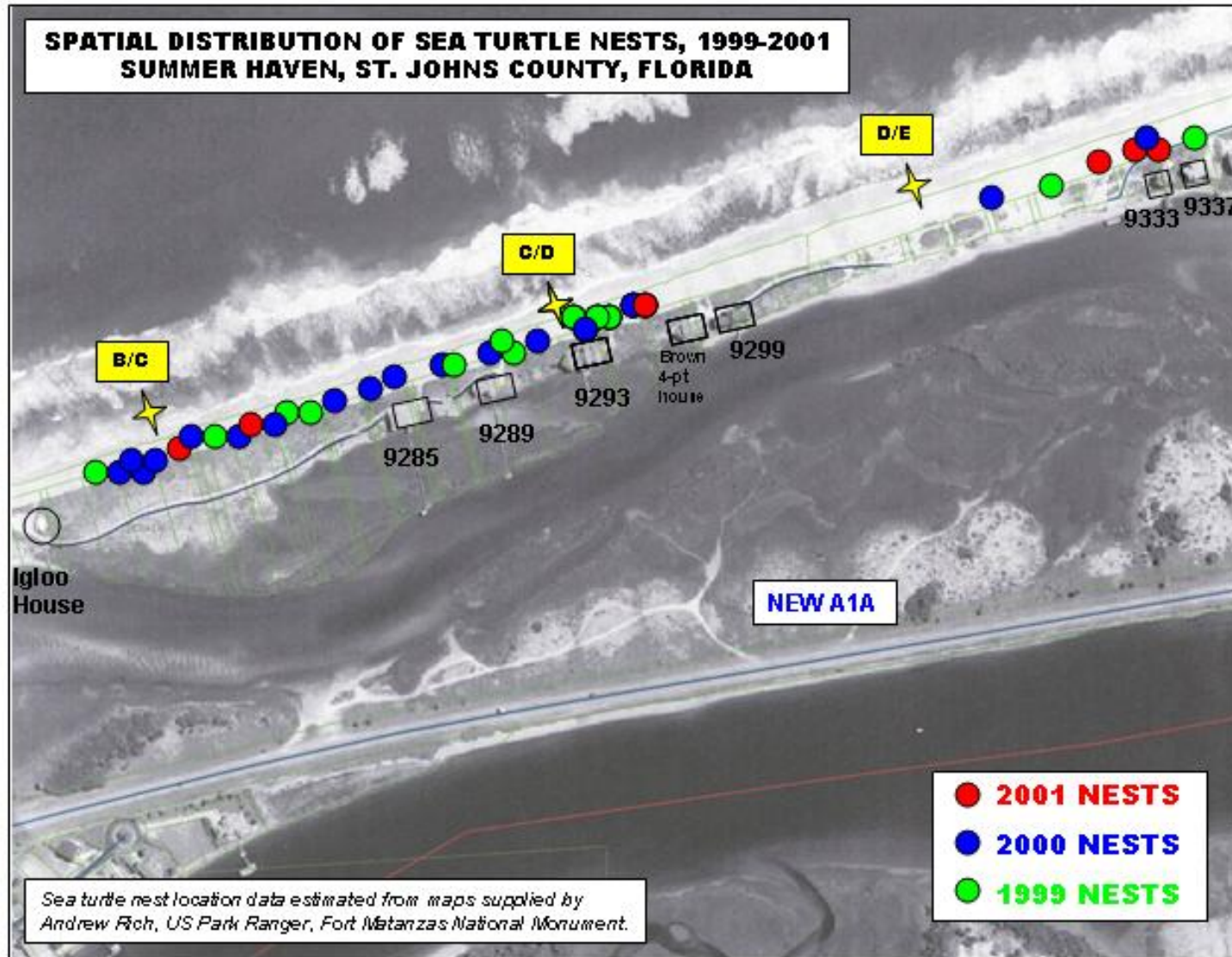
Figure 2-12

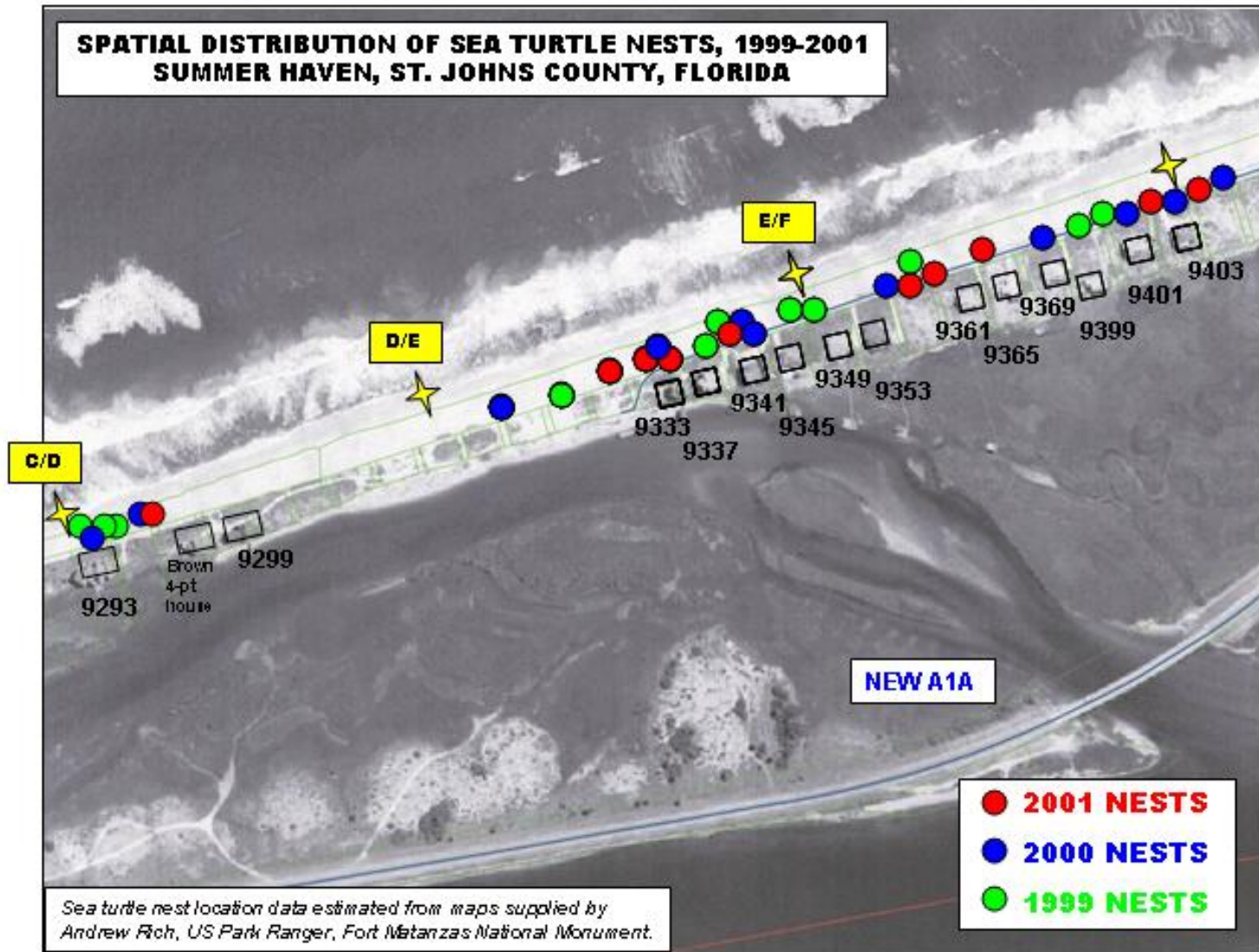
Spatial Distribution of Sea Turtle Nests in Summer Haven, 1998- 2001.

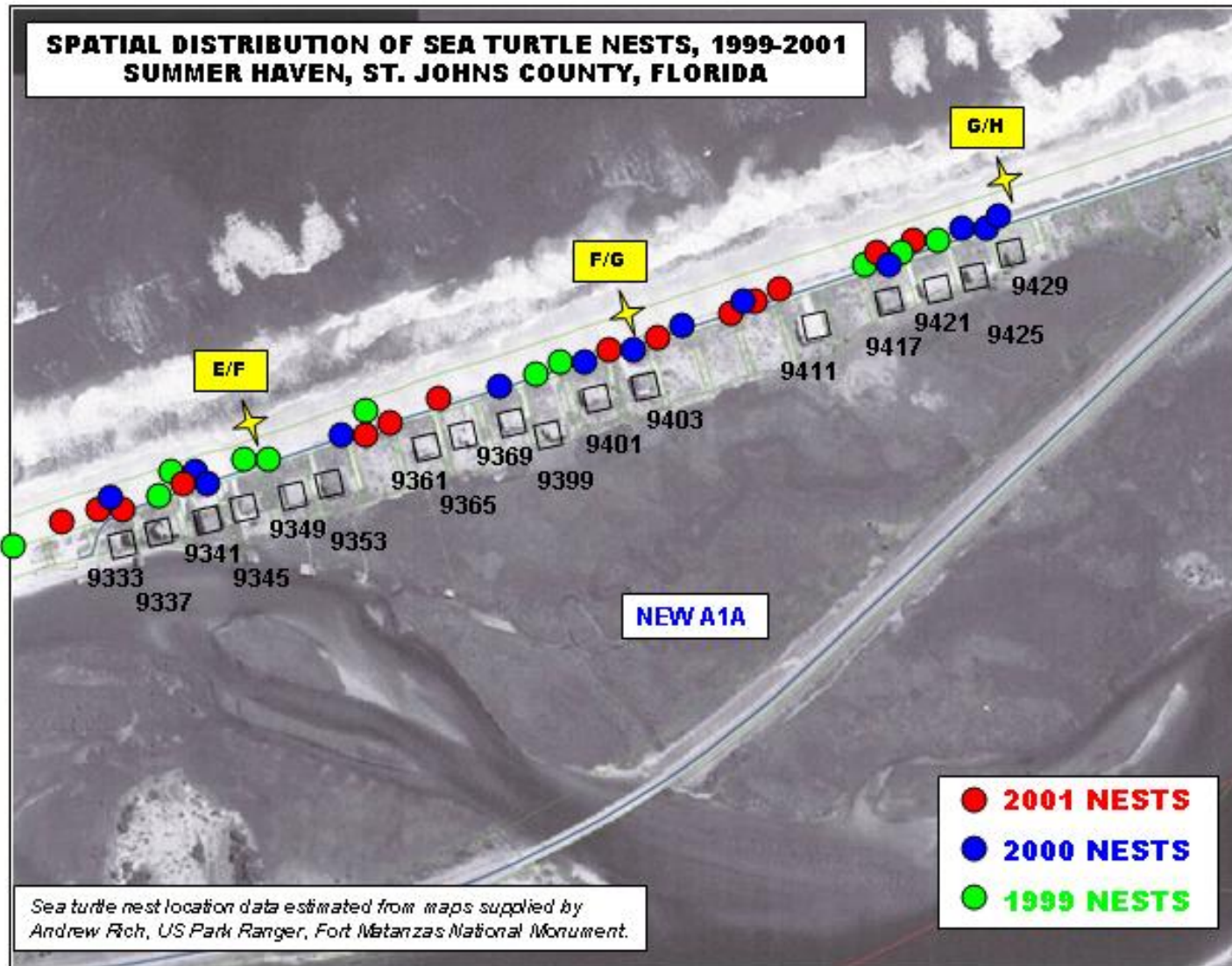












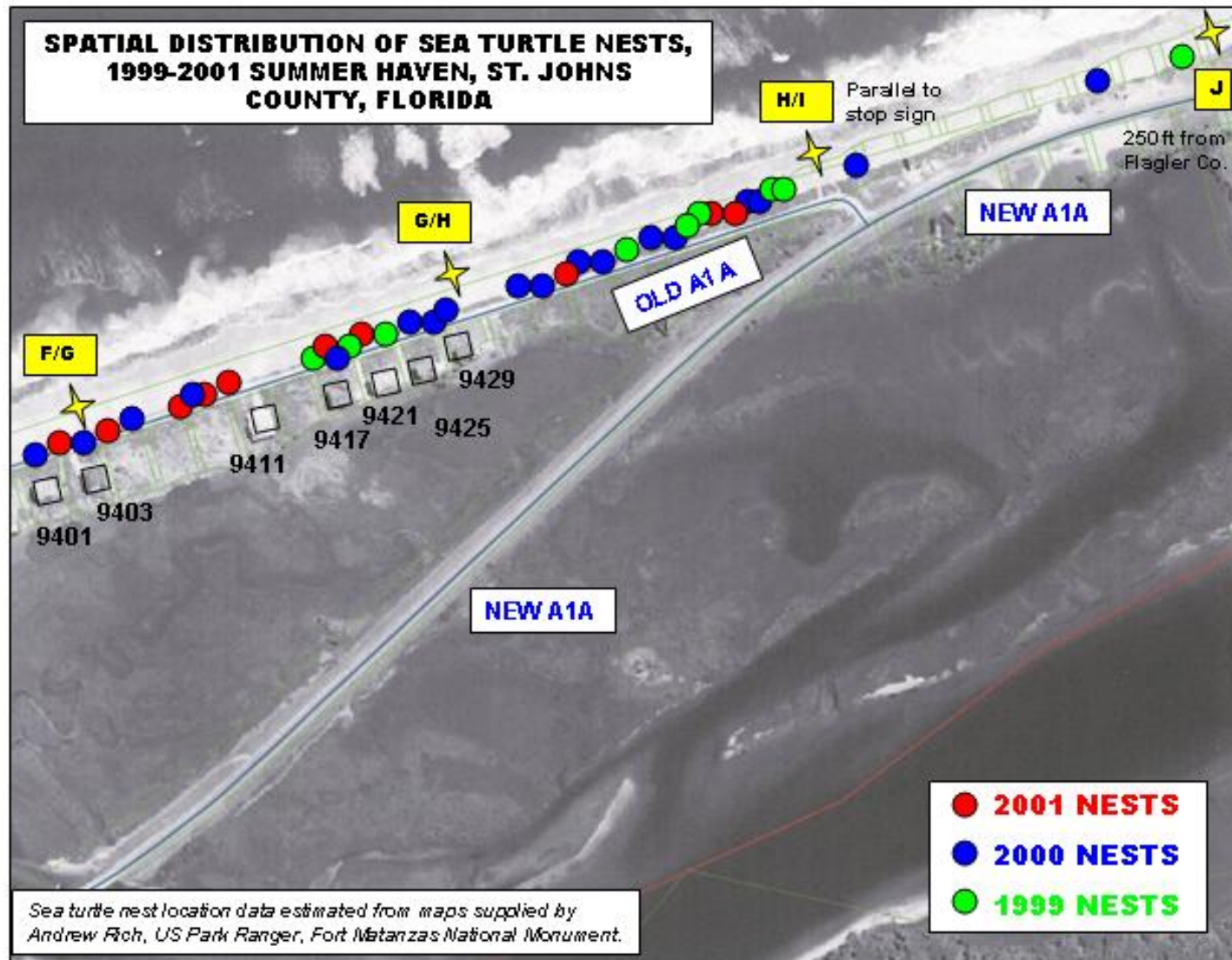


Figure 2-13
The Human Dimension along the Beaches of Summer Haven.

