

# FEMA Dune Enhancement Project

Crescent Beach Pre-Construction  
[sjcfl.us](http://sjcfl.us)



# AGENDA

**Background**

**Project Details**

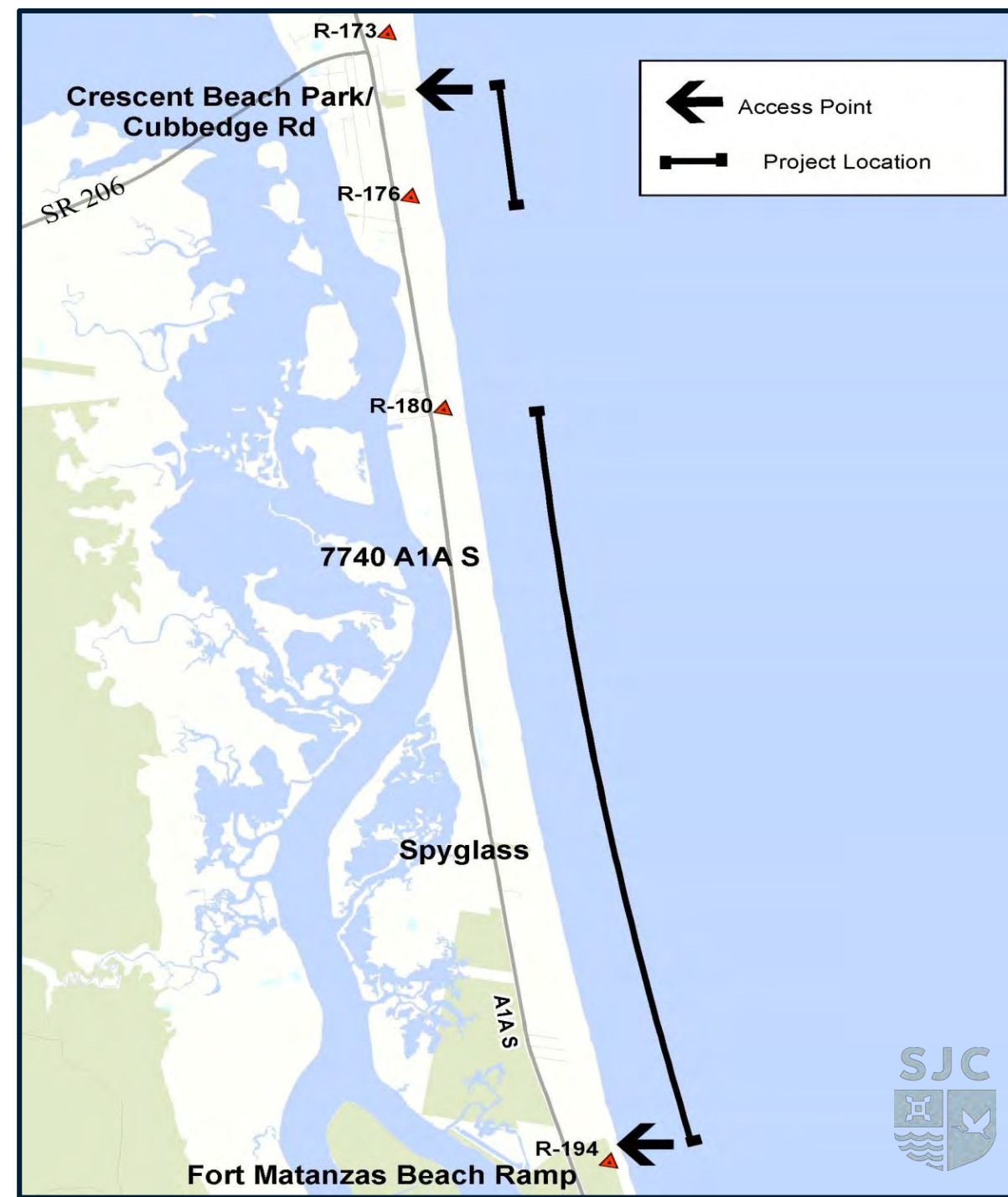
**Summary**

**Contact Info**

**Questions**

# Background

- Funded by FEMA & State through Hurricanes Ian and Nicole funding.
- The St. Johns County Board of County Commissioners voted to approve the project on September 19, 2023.
- Hired Olsen Associates as Engineer for the project



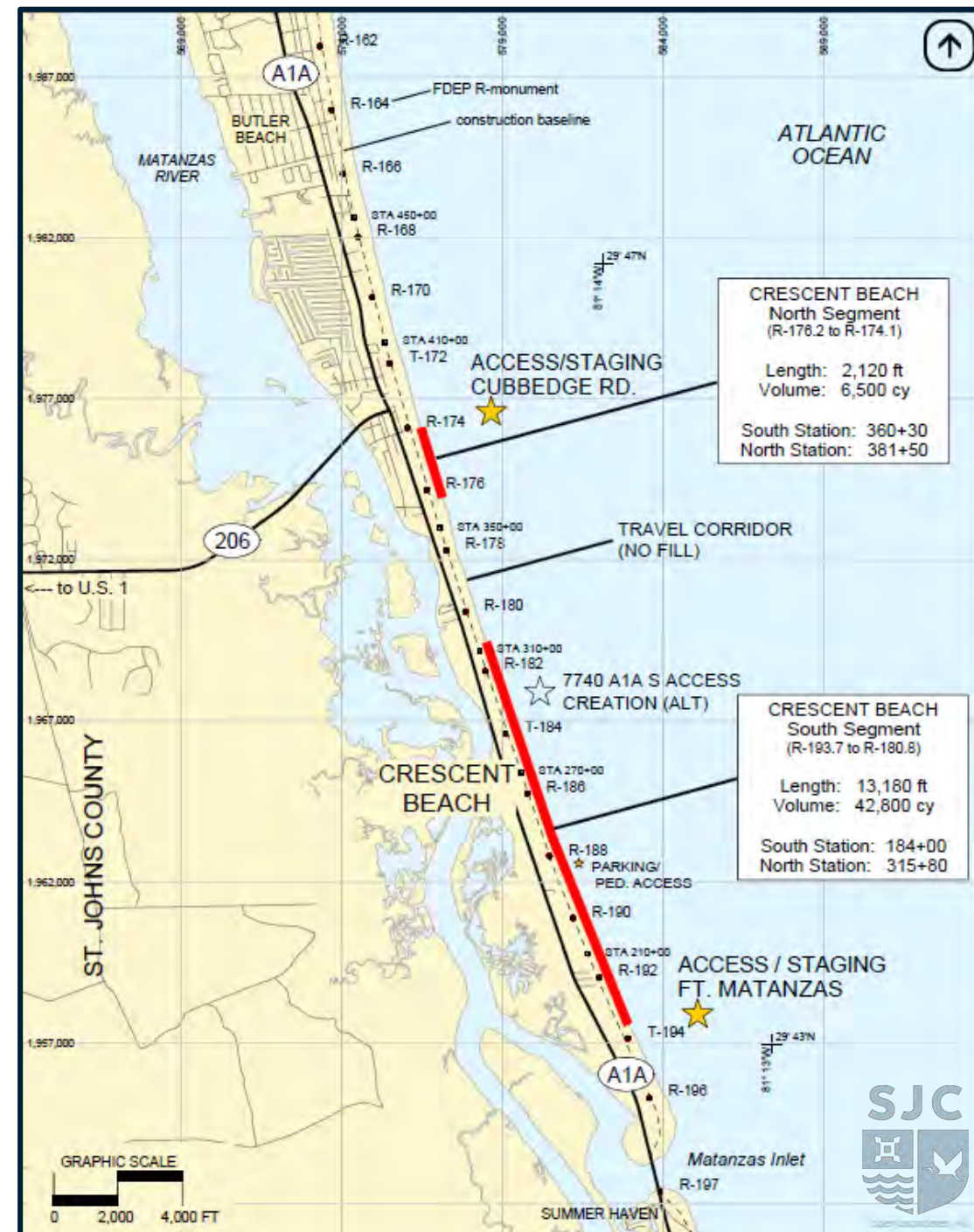
# Background

- Funded by FEMA & State through Hurricanes Ian and Nicole funding.
- The St. Johns County Board of County Commissioners voted to approve the project on September 19, 2023.
- Hired Olsen Associates as Engineer for the project



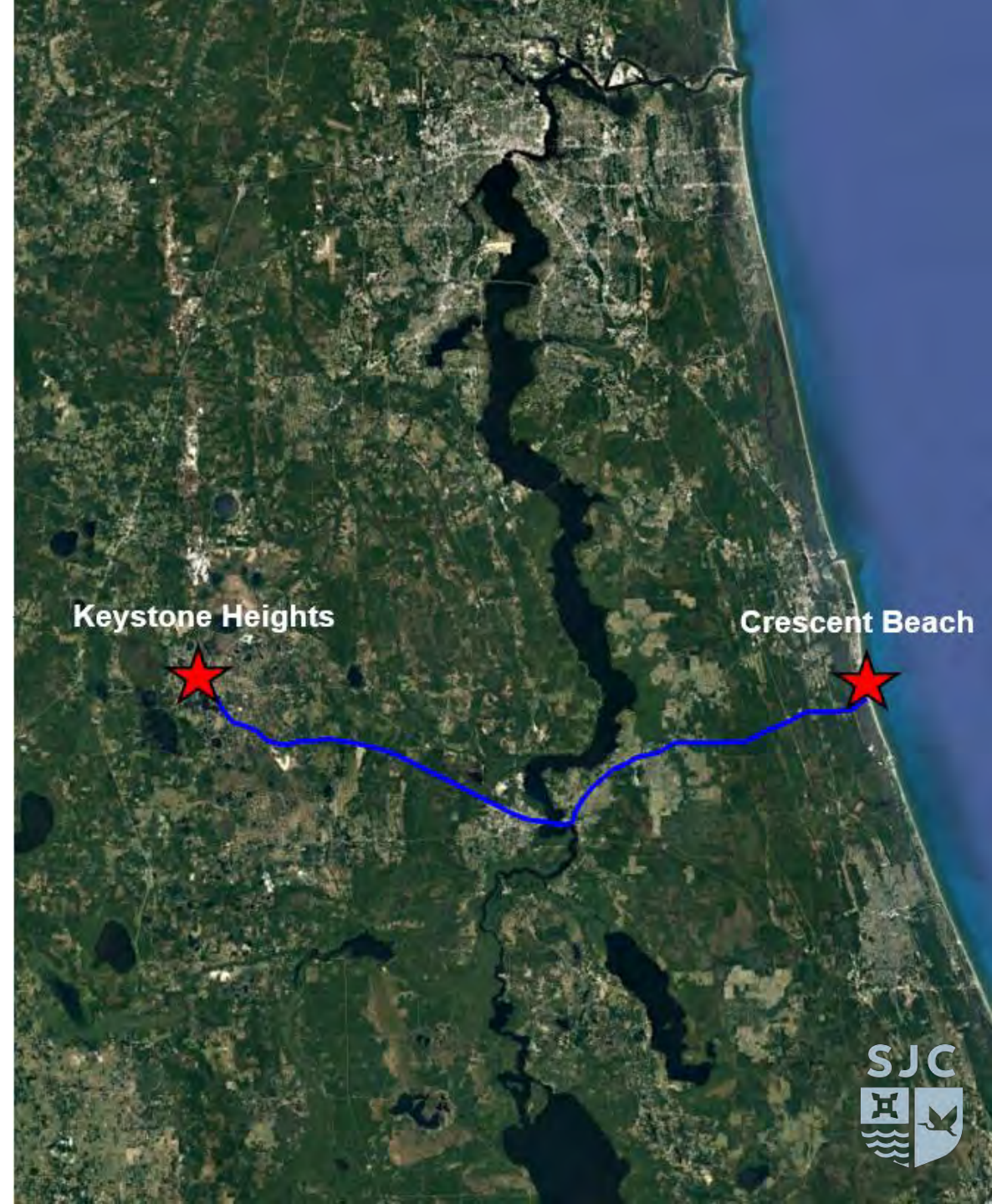
# Approved Project Areas

- Cubbedge Rd to 7172 A1A S
  - 2,120 ft
  - 6,500 cubic yards
- 7560 A1A S to Ft Matanzas Ramp
  - 13,180 ft
  - 42,800 cubic yards



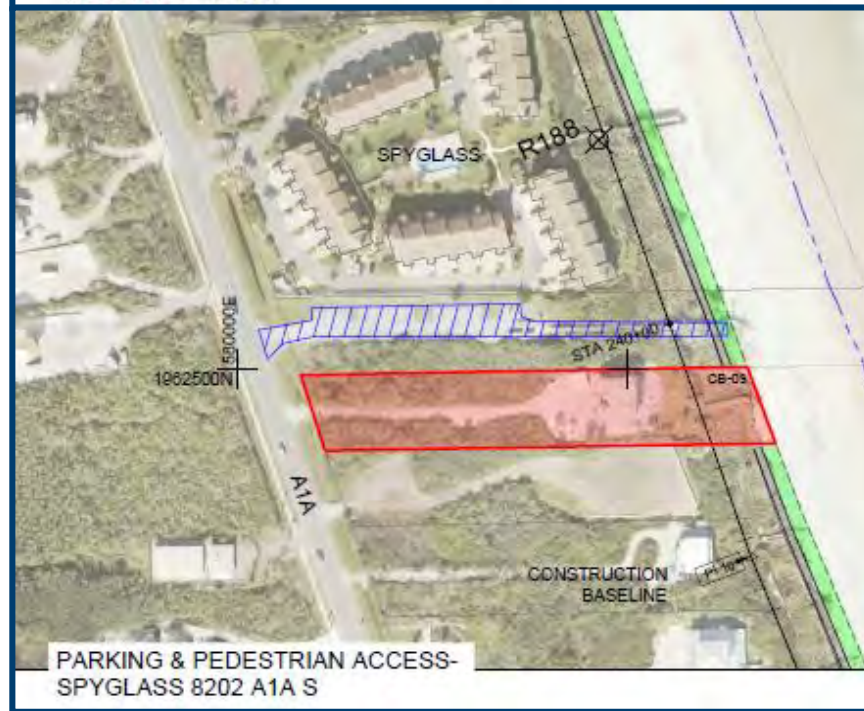
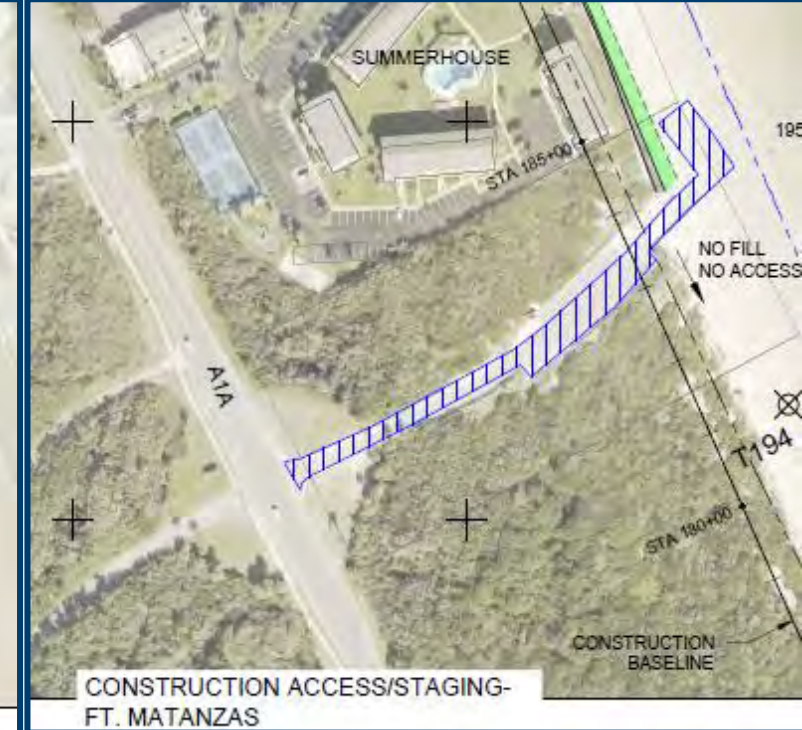
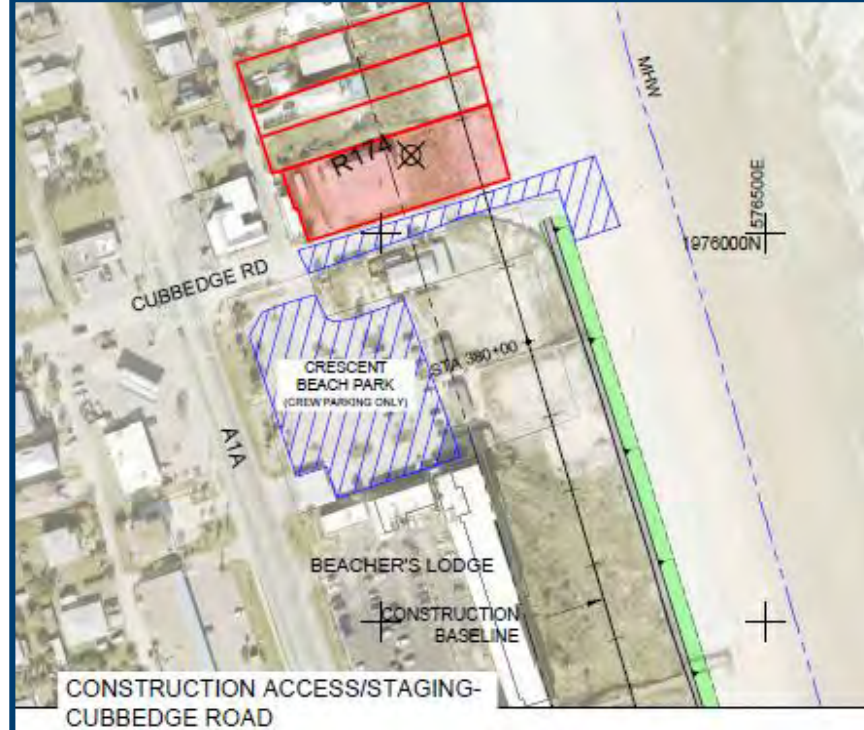
# Project Details

- Construction Firm: Phillips and Jordan
- Truck haul project
- Sand trucked from Vulcan Mines in Keystone Heights to beach access
- Sand Placement will occur between 6:30 AM – 7 PM (After all clear from Turtle Patrol)
- Work will occur Monday through Saturday
- Mobilization to SPV on October 9<sup>th</sup>
- Crescent Beach early November



# Access and Staging

- Cubbedge Rd & CB Park  
Mid-November (approx.)
- Ft Matanzas Ramp  
Mid-late November (approx.)
- Spyglass  
Late November (approx.)
- 7740 A1A  
Late November (approx.)



# What Residents Can Expect

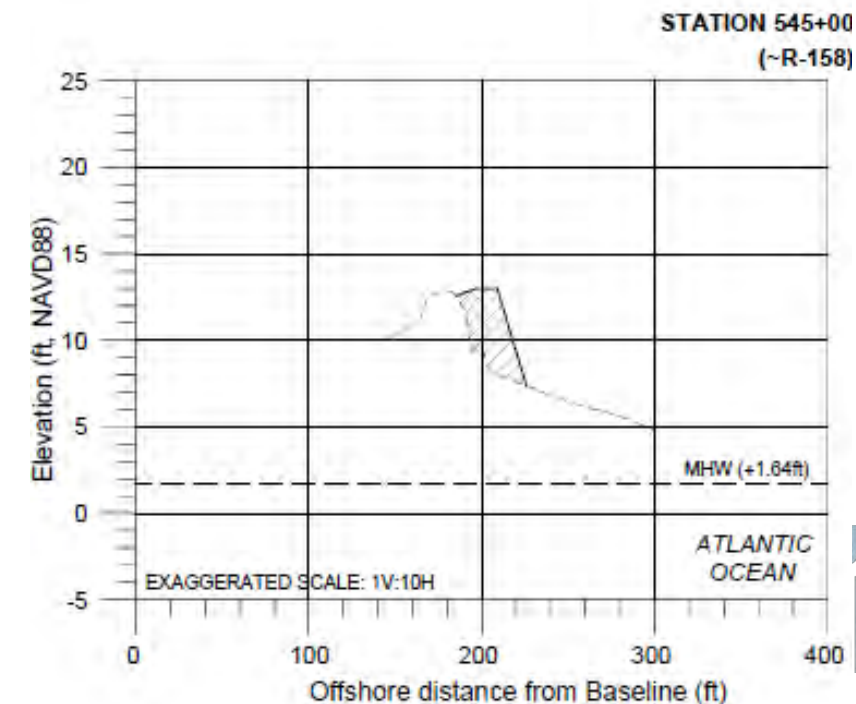
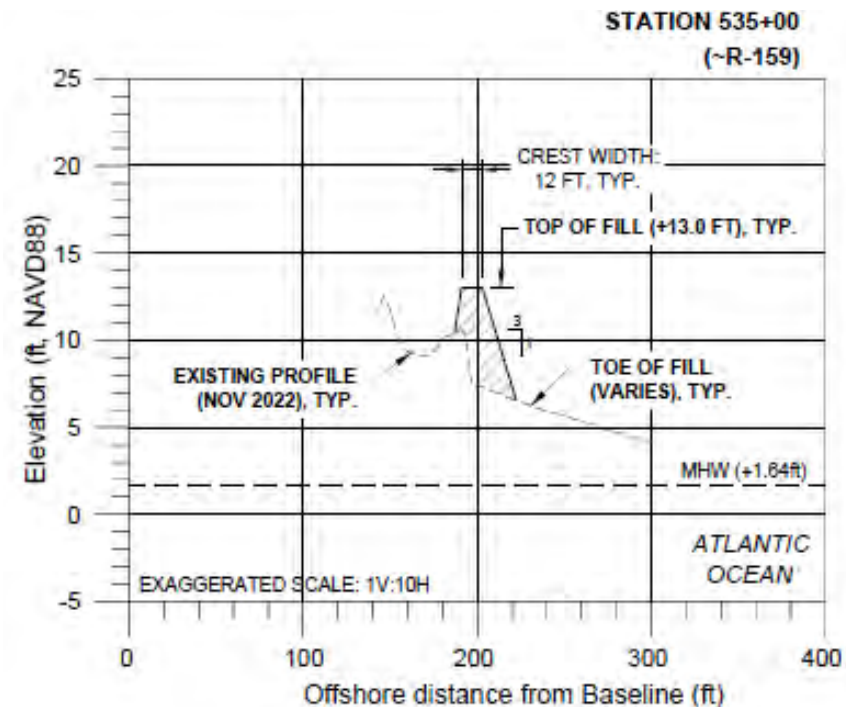
- Immediate areas where work is being completed on the beach will be closed to pedestrians.
- On-beach driving access will be temporarily affected. Expect closures at Cubbedge Rd and Ft Matanzas Ramp during construction over the next two months.
- Construction vehicles will be traveling up and down the beach during construction.





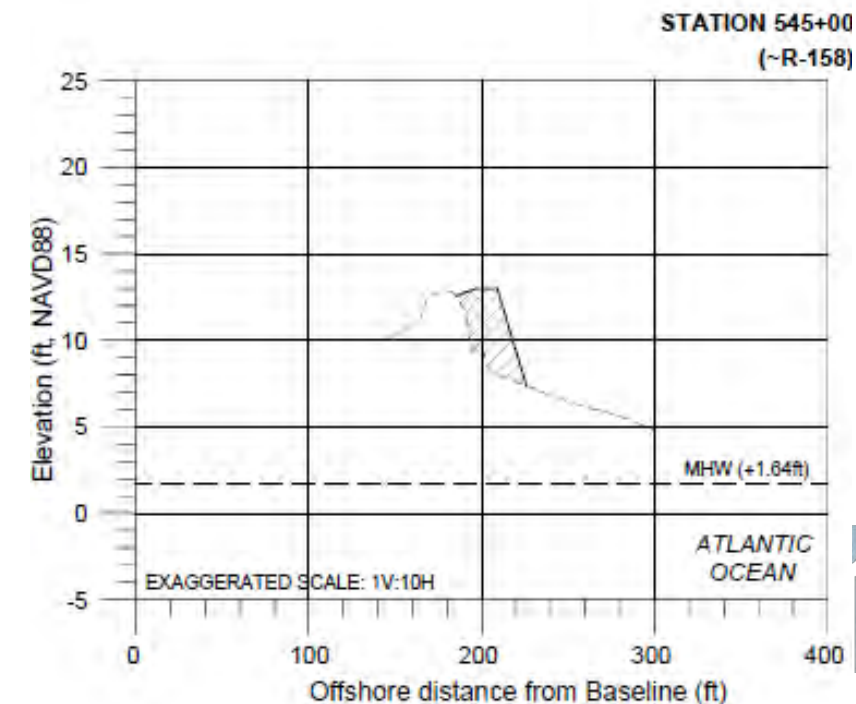
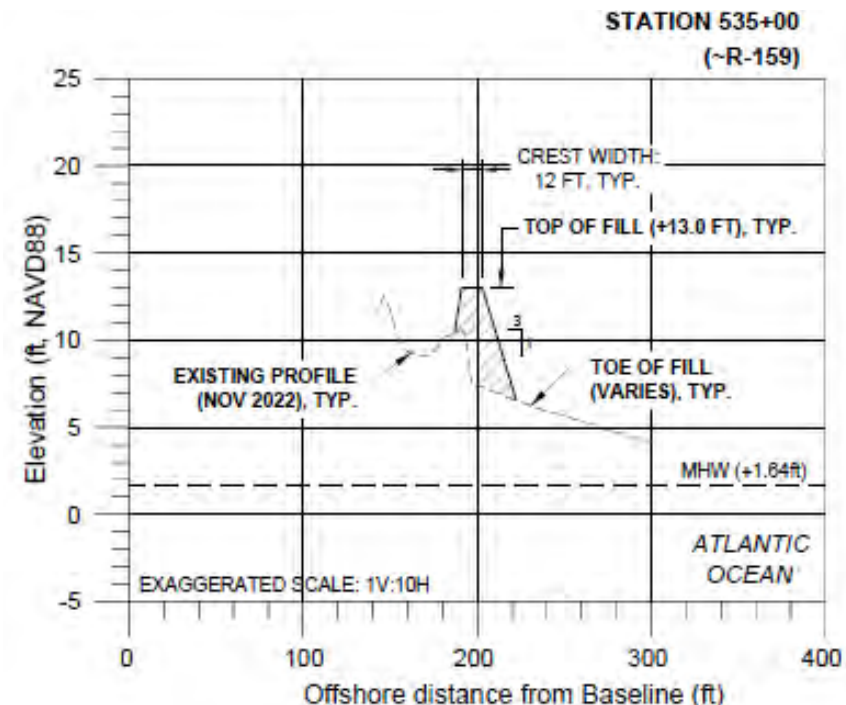
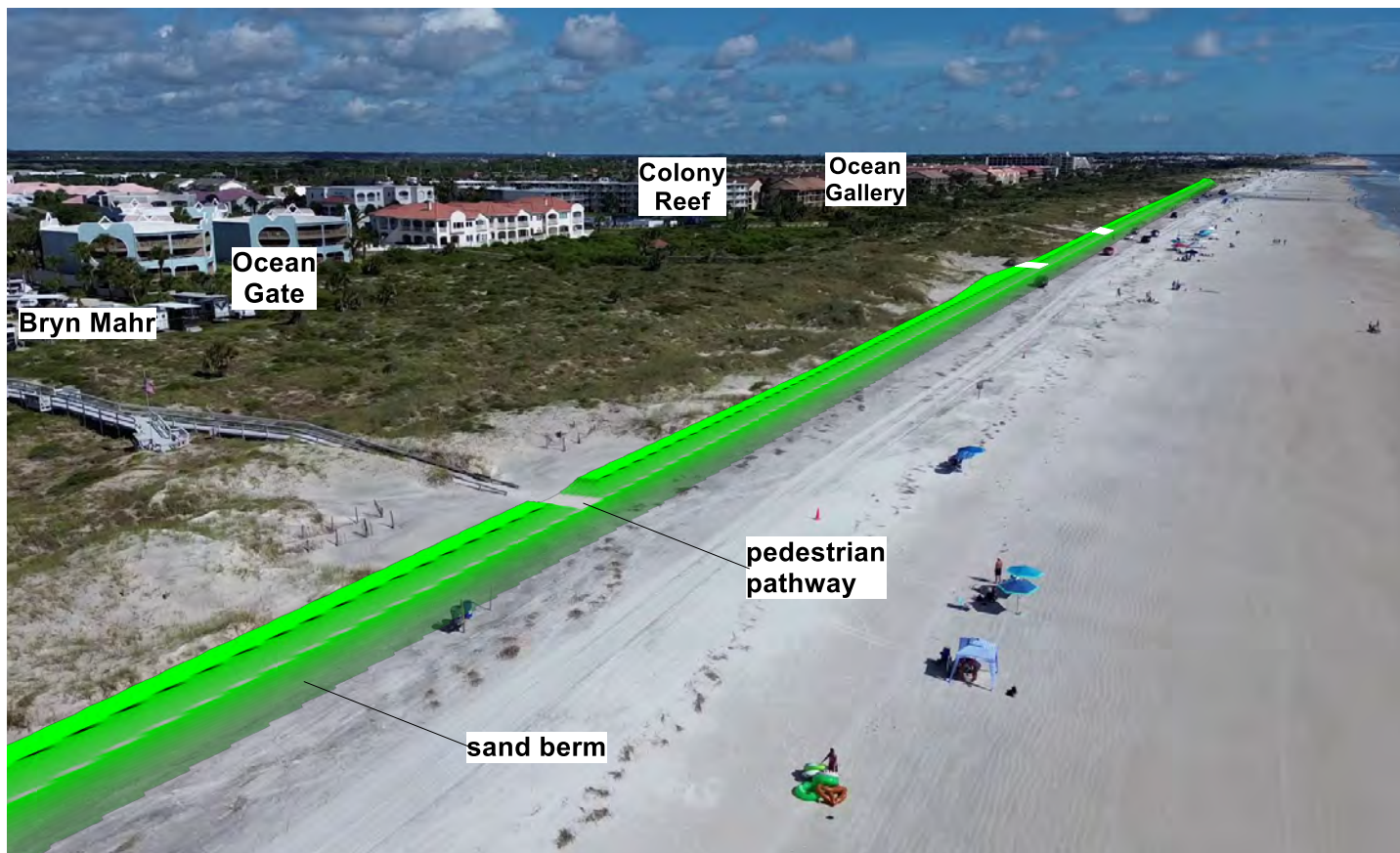
# What Residents Can Expect

- Constructing a small dune feature
- Planted with sea oats
- Vibration Monitoring Equipment
- Temporary Protection



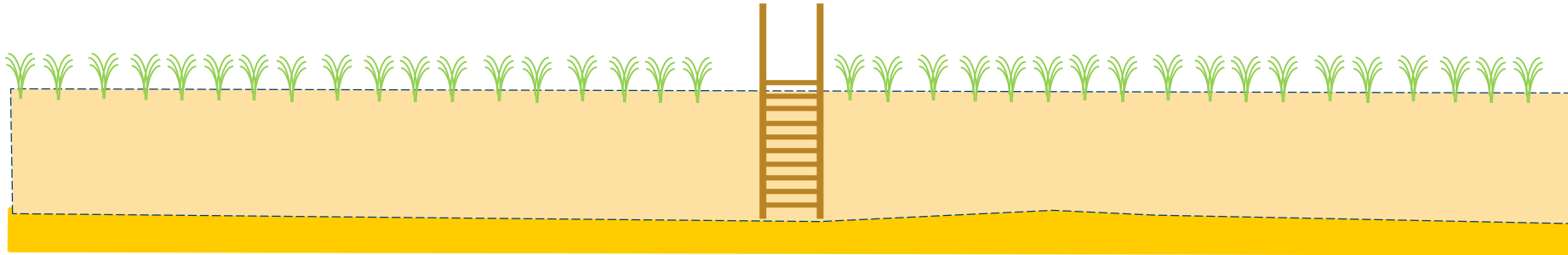
# What Residents Can Expect

- Building a small dune feature



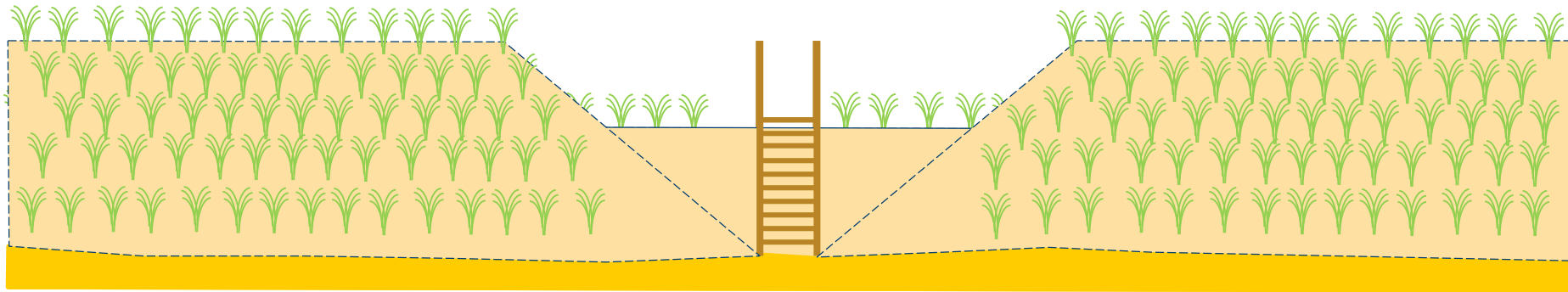
# What Residents Can Expect

- Dune Walkover Example:



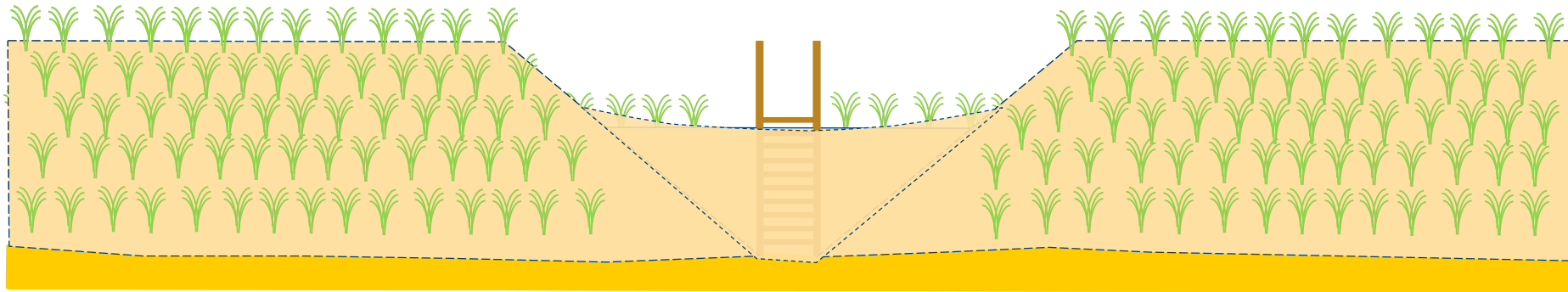
# What Residents Can Expect

- Dune Walkover Example: Alternative 1



# What Residents Can Expect

- Dune Walkover Example: Alternative 2



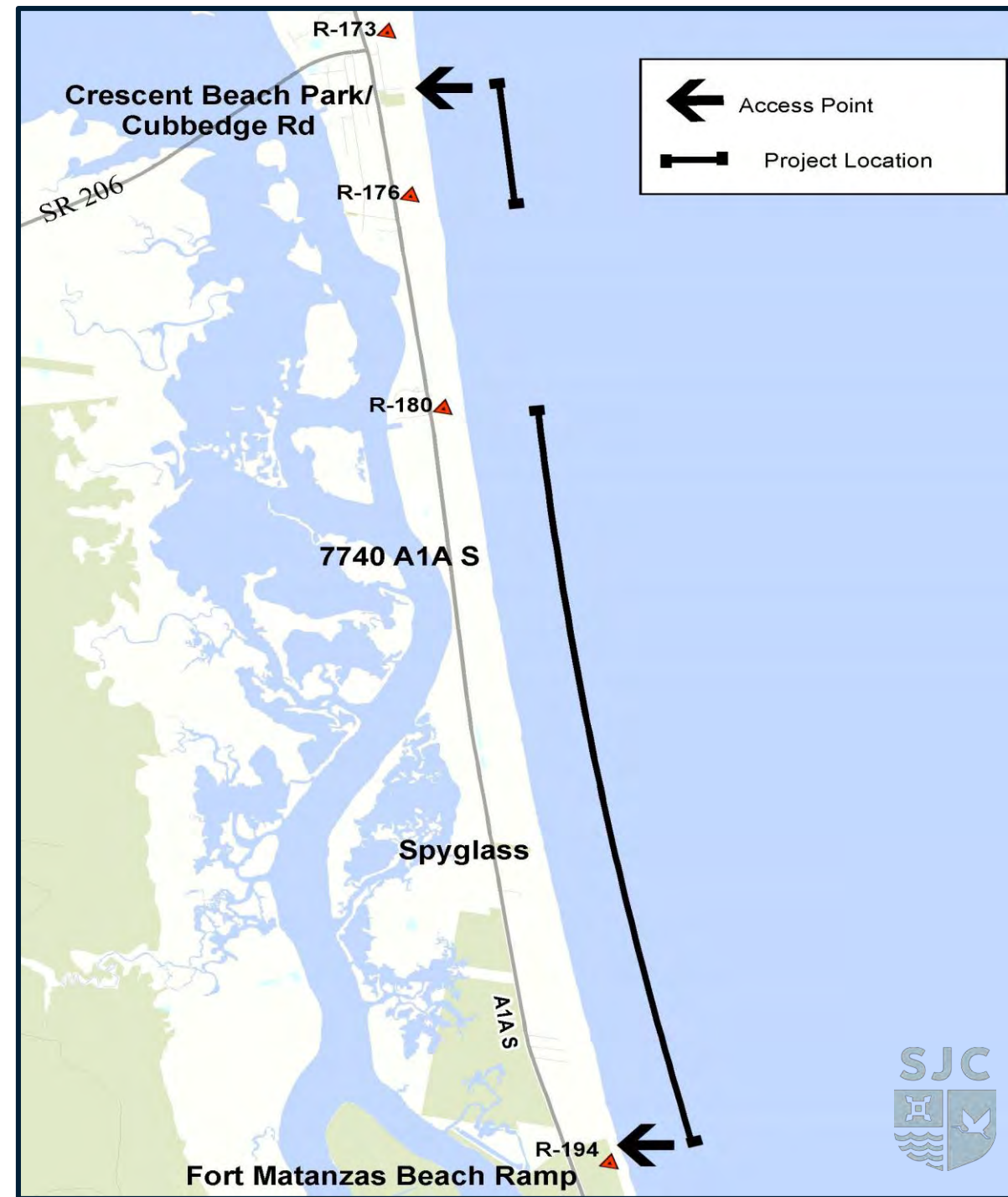
# Final Product Example

- Recently completed the Butler Beach reach portion of the project



# Summary

- Truck Haul Project
- Expect closures at Cubbedge Rd, Crescent Beach Park, Spyglass Park, and Ft. Matanzas Ramp during construction over the next two months
- Expect work areas on the beach to be closed to pedestrians



# Contact Information

Website: [www.sjcfl.us/CoastalProjects](http://www.sjcfl.us/CoastalProjects)

Email: [coastalprojects@sjcfl.us](mailto:coastalprojects@sjcfl.us)

Phone: 904.209.0260

Beach Brief  
Newsletter:





# Questions?

Thanks 😊



