

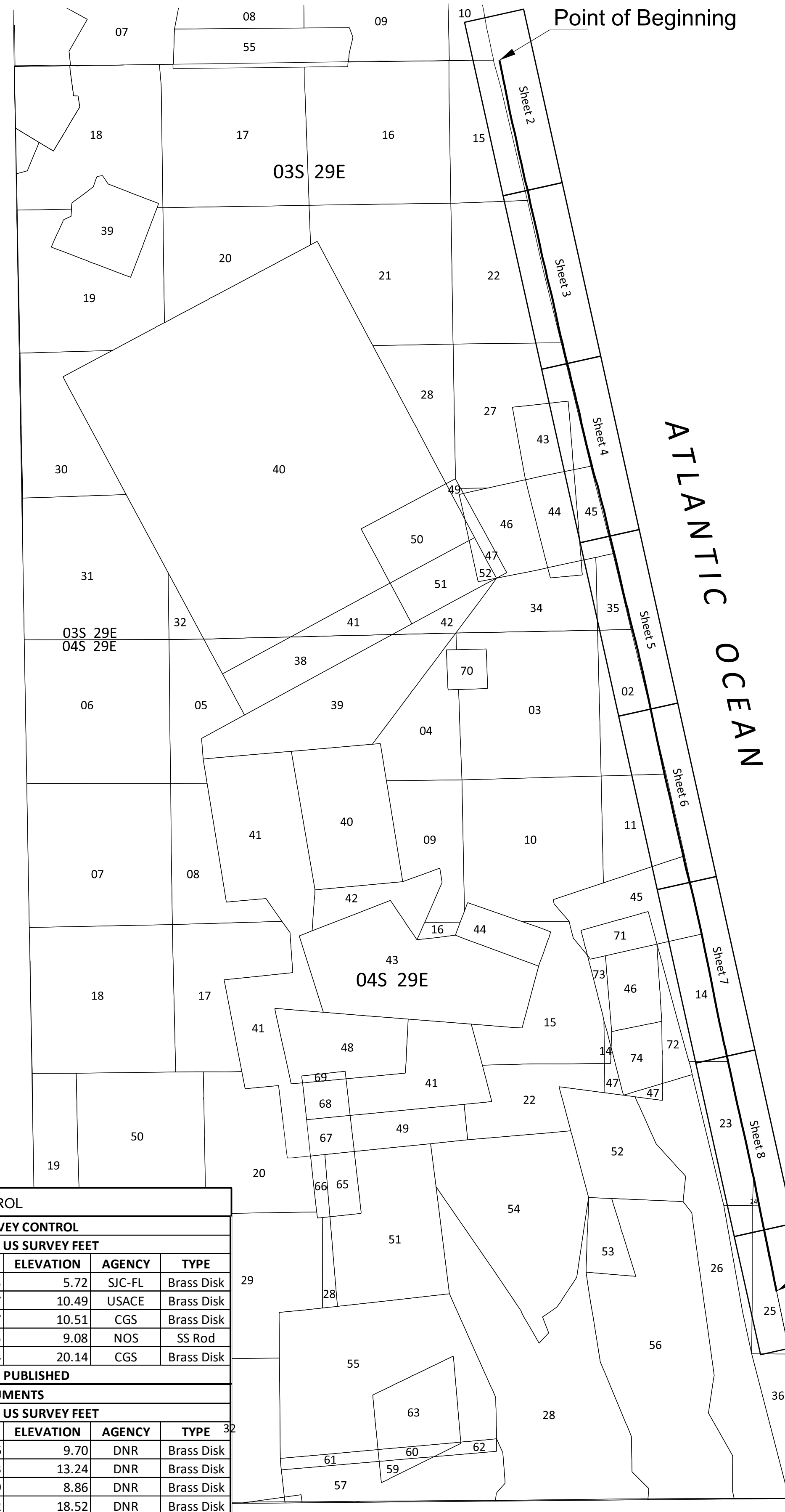
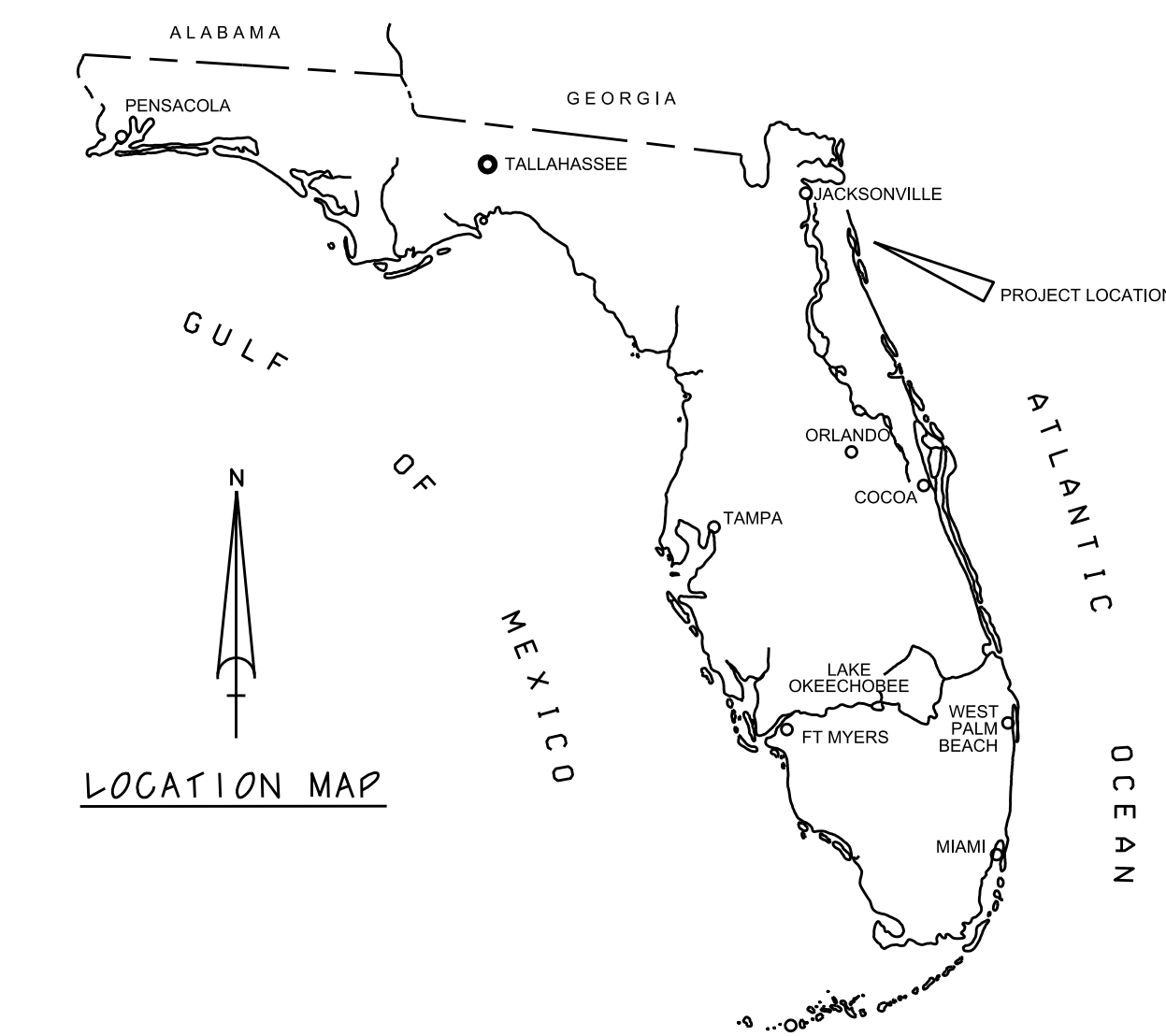
ST. JOHNS COUNTY R01 TO R46.2 MEAN HIGH WATER LINE SURVEY & PROPOSED EROSION CONTROL LINE

LENGTH: 8.88 MILES +/-

Sections 15, 22, 27, 45, 35, 02, Township 03 South, Range 29 East, and Sections 02, 11, 45, 14, 23, 24, 25, Township 04 South, Range 29 East, St. Johns County, Florida

LEGAL DESCRIPTION

COMMENCING at a Florida Department of Natural Resources survey disc found in concrete stamped "78 79 A09" having coordinates of Northing 2151950.61 U.S. Survey feet and Easting 535678.76 U.S. Survey feet as referenced to the Florida State Plane Coordinate System, East Zone, North American Datum of 1983/11, proceed along a bearing of North 71°13'21" East a distance of 546.20 feet to a point on the Mean High Water line of the Atlantic Ocean, now having an elevation of 1.99 feet as referenced to the North American Vertical Datum of 1988, said point being the Point of Beginning of the following described Mean High Water line, and having coordinates of North 2152126.35 feet and Easting 536195.91 feet; thence along said Mean High Water Line, South 13°40'12" East, 140.69 feet; thence South 10°53'24" East, 200.19 feet; thence South 12°17'39" East, 200.06 feet; thence South 10°22'34" East, 200.52 feet; thence South 12°37'33" East, 200.83 feet; thence South 11°37'23" East, 200.36 feet; thence South 09°35'33" East, 200.57 feet; thence South 11°40'46" East, 200.40 feet; thence South 10°40'06" East, 200.24 feet; thence South 11°51'36" East, 200.23 feet; thence South 12°34'04" East, 200.13 feet; thence South 10°56'31" East, 200.23 feet; thence South 14°39'25" East, 200.95 feet; thence South 14°23'39" East, 200.58 feet; thence South 12°32'58" East, 200.42 feet; thence South 11°46'10" East, 200.25 feet, said point being a distance of 479.61 feet from a DNR disc stamped "78-79-A10" along a bearing of South 75°23'35" West; thence South 11°15'47" East, 200.77 feet; thence South 11°12'41" East, 200.35 feet; thence South 13°38'39" East, 200.03 feet; thence South 14°00'06" East, 200.82 feet; thence South 11°38'40" East, 200.74 feet; thence South 12°13'26" East, 200.47 feet; thence South 11°35'52" East, 199.86 feet; thence South 15°31'38" East, 200.51 feet; thence South 14°14'07" East, 200.71 feet; thence South 12°19'08" East, 200.02 feet; thence South 10°26'49" East, 200.66 feet; thence South 12°20'37" East, 200.09 feet; thence South 13°45'28" East, 199.96 feet; thence South 13°35'35" East, 200.37 feet; thence South 12°07'25" East, 200.23 feet; thence South 14°18'03" East, 200.06 feet; thence South 12°17'05" East, 200.91 feet; thence South 12°22'54" East, 200.24 feet; thence South 12°45'07" East, 200.39 feet; thence South 11°12'07" East, 199.98 feet; thence South 11°10'44" East, 200.23 feet; thence South 12°08'07" East, 200.49 feet; thence South 16°26'53" East, 199.65 feet; thence South 13°47'06" East, 200.69 feet; thence South 11°11'19" East, 200.87 feet; thence South 11°42'03" East, 199.69 feet; thence South 15°04'04" East, 200.28 feet; thence South 14°49'52" East, 200.45 feet; thence South 14°26'41" East, 200.62 feet, said point being a distance of 477.05 feet from a Coast and Geodetic Survey disc stamped "Q 323 1970" along a bearing of South 63°24'51" West; thence South 13°01'26" East, 200.04 feet; thence South 11°30'13" East, 200.61 feet; thence South 12°53'46" East, 199.59 feet; thence South 11°39'03" East, 200.38 feet; thence South 11°49'16" East, 200.19 feet; thence South 12°00'52" East, 200.36 feet; thence South 13°00'22" East, 200.48 feet; thence South 12°43'31" East, 200.40 feet; thence South 15°58'58" East, 200.14 feet; thence South 11°18'01" East, 200.40 feet; thence South 13°02'56" East, 199.79 feet; thence South 12°27'41" East, 199.87 feet; thence South 14°21'11" East, 254.61 feet; thence South 15°39'16" East, 214.77 feet; thence South 12°23'59" East, 214.96 feet; thence South 12°50'20" East, 288.59 feet; thence South 15°27'55" East, 254.63 feet; thence South 13°05'24" East, 226.17 feet; thence South 12°43'21" East, 198.87 feet; thence South 15°23'28" East, 216.21 feet; thence South 13°13'26" East, 219.38 feet; thence South 11°07'38" East, 217.45 feet; thence South 10°36'07" East, 212.41 feet; thence South 14°06'34" East, 205.18 feet; thence South 13°26'35" East, 203.12 feet; thence South 12°8'107" East, 250.73 feet; thence South 13°43'38" East, 205.04 feet; thence South 14°50'48" East, 230.09 feet; thence South 14°00'25" East, 198.54 feet; thence South 14°11'40" East, 209.99 feet; thence South 13°59'23" East, 276.73 feet; thence South 14°16'23" East, 104.19 feet; thence South 16°35'08" East, 249.40 feet; thence South 18°33'46" East, 214.53 feet; thence South 13°51'11" East, 215.72 feet; thence South 12°03'54" East, 175.44 feet; thence South 14°42'56" East, 128.42 feet; thence South 15°34'50" East, 235.19 feet; thence South 15°53'17" East, 214.41 feet; thence South 12°20'58" East, 223.41 feet; thence South 13°04'53" East, 223.93 feet; thence South 12°31'00" East, 162.64 feet; thence South 14°17'34" East, 223.36 feet; thence South 13°51'22" East, 208.35 feet; thence South 13°16'47" East, 219.43 feet; thence South 13°03'33" East, 214.74 feet; thence South 16°11'27" East, 175.85 feet; thence South 12°22'52" East, 205.09 feet; thence South 14°01'39" East, 211.57 feet; thence South 12°28'24" East, 203.80 feet; thence South 13°18'48" East, 224.67 feet; thence South 13°10'32" East, 150.93 feet; thence South 12°26'01" East, 229.58 feet; thence South 12°36'33" East, 208.13 feet; thence South 13°12'27" East, 201.75 feet; thence South 13°45'12" East, 244.30 feet; thence South 16°00'50" East, 222.17 feet; thence South 12°33'51" East, 155.60 feet; said point being a distance of 887.22 feet from a DNR disc stamped "78-79-A14" along a bearing of South 81°01'01" West; thence South 14°03'50" East, 213.23 feet; thence South 13°34'52" East, 207.47 feet; thence South 12°53'01" East, 224.43 feet; thence South 18°01'07" East, 101.34 feet; thence South 14°03'04" East, 254.81 feet; thence South 14°37'34" East, 218.32 feet; thence South 13°56'53" East, 208.52 feet; thence South 12°03'39" East, 280.04 feet; thence South 12°42'59" East, 296.41 feet; thence South 13°51'39" East, 226.83 feet; said point being a distance of 508.95 feet from a DNR disc stamped "78-79-A16" along a bearing of South 80°13'54" West; thence South 12°21'00" East, 206.32 feet; thence South 12°05'18" East, 256.39 feet; thence South 10°50'15" East, 118.95 feet; thence South 12°15'00" East, 244.17 feet; thence South 12°53'07" East, 213.97 feet; thence South 11°27'07" East, 212.47 feet; thence South 11°43'04" East, 255.48 feet; thence South 12°48'06" East, 139.40 feet; thence South 11°31'15" East, 230.07 feet; thence South 10°58'57" East, 221.22 feet; thence South 13°04'56" East, 210.05 feet; thence South 11°27'46" East, 227.75 feet; thence South 12°20'51" East, 163.77 feet; thence South 11°56'19" East, 222.06 feet; thence South 12°19'37" East, 203.83 feet; thence South 12°24'50" East, 202.62 feet; thence South 11°25'03" East, 234.95 feet; thence South 12°17'02" East, 180.93 feet; thence South 12°48'05" East, 206.75 feet; thence South 12°19'05" East, 203.35 feet; thence South 13°22'02" East, 205.63 feet; thence South 13°34'03" East, 254.15 feet; thence South 13°32'55" East, 232.26 feet; thence South 12°22'48" East, 219.69 feet; thence South 12°36'30" East, 204.44 feet; thence South 12°47'21" East, 182.57 feet; thence South 12°19'51" East, 196.68 feet; thence South 12°17'29" East, 200.49 feet; thence South 12°29'52" East, 205.18 feet; thence South 14°57'37" East, 200.62 feet; thence South 11°54'59" East, 201.02 feet; thence South 12°57'25" East, 200.61 feet to a point on the Mean High Water line of the Atlantic Ocean, now having an elevation of 1.91 feet as referenced to the North American Vertical Datum of 1988; thence South 13°39'17" East, 239.38 feet; thence South 11°41'13" East, 200.73 feet; thence South 12°09'55" East, 200.30 feet; thence South 12°47'19" East, 200.92 feet; thence South 14°34'33" East, 199.51 feet; thence South 15°22'21" East, 261.53 feet; thence South 14°13'08" East, 199.00 feet; thence South 15°18'14" East, 200.00 feet; thence South 12°06'58" East, 200.31 feet; thence South 13°51'56" East, 201.35 feet; thence South 12°44'04" East, 219.90 feet; thence South 12°07'02" East, 198.87 feet; thence South 12°03'03" East, 200.20 feet; thence South 13°32'05" East, 202.87 feet; thence South 12°51'35" East, 200.57 feet; thence South 11°54'44" East, 233.15 feet; thence South 11°28'51" East, 199.12 feet; thence South 10°27'47" East, 199.35 feet; thence South 12°56'48" East, 202.63 feet; thence South 12°08'34" East, 200.65 feet; thence South 10°35'06" East, 247.88 feet; thence South 12°39'20" East, 301.21 feet; thence South 11°14'30" East, 199.52 feet; thence South 10°26'54" East, 200.83 feet; thence South 11°11'07" East, 200.01 feet; thence South 11°02'21" East, 199.55 feet; thence South 10°37'33" East, 200.04 feet; thence South 11°25'17" East, 200.95 feet; thence South 10°53'21" East, 200.78 feet; thence South 11°25'44" East, 199.78 feet; thence South 11°05'00" East, 200.84 feet; thence South 12°01'48" East, 200.69 feet; thence South 13°06'12" East, 197.89 feet; thence South 12°15'41" East, 201.71 feet; thence South 11°13'42" East, 159.08 feet; thence South 11°25'24" East, 176.55 feet; thence South 14°26'53" East, 259.68 feet; thence South 11°19'16" East, 199.73 feet; thence South 12°38'30" East, 199.93 feet; thence South 11°40'22" East, 200.45 feet; thence South 12°43'52" East, 203.05 feet; thence South 12°44'32" East, 200.73 feet; thence South 12°02'12" East, 200.37 feet; thence South 10°53'09" East, 200.60 feet; thence South 11°51'19" East, 200.33 feet; thence South 12°45'08" East, 200.60 feet; thence South 12°15'38" East, 200.72 feet; thence South 12°40'39" East, 200.40 feet; thence South 13°19'36" East, 199.36 feet; thence South 12°18'29" East, 200.37 feet; thence South 12°32'59" East, 200.37 feet; thence South 13°19'32" East, 199.70 feet; thence South 13°37'47" East, 199.24 feet; thence South 12°48'40" East, 199.40 feet; thence South 12°21'47" East, 200.04 feet; thence South 11°40'47" East, 200.31 feet; thence South 11°54'39" East, 200.67 feet; thence South 13°00'11" East, 200.68 feet; thence South 11°22'41" East, 199.88 feet; thence South 11°01'28" East, 200.17 feet; thence South 14°10'05" East, 199.93 feet; thence South 12°44'32" East, 200.07 feet; thence South 10°45'44" East, 200.37 feet; thence South 10°05'31" East, 200.54 feet; thence South 10°48'52" East, 200.62 feet; thence South 11°45'32" East, 200.59 feet; thence South 10°38'43" East, 200.48 feet; thence South 11°39'15" East, 200.52 feet; thence South 11°47'56" East, 200.46 feet; thence South 11°44'14" East, 200.18 feet; thence South 11°06'48" East, 199.75 feet; thence South 11°24'27" East, 199.79 feet; thence South 12°09'42" East, 200.72 feet; thence South 11°26'00" East, 200.95 feet; thence South 11°32'28" East, 200.52 feet; thence South 13°22'46" East, 199.54 feet; thence South 11°23'09" East, 199.55 feet; thence South 11°21'19" East, 200.81 feet; thence South 10°40'33" East, 200.68 feet; thence South 10°24'56" East, 200.36 feet; thence South 11°43'30" East, 200.17 feet; thence South 12°05'58" East, 199.46 feet; thence South 11°42'05" East, 159.78 feet the Point of Termination, said Point of Termination having coordinates of North 2106406.69 feet and Easting 546497.37 feet from a found Coast and Geodetic Survey disc stamped "Z 323 1970" along a bearing of South 03°21'53" West and a distance of 1,844.00 feet. Mean High Water Line as described having a total length of 8.88 miles or 46,880.51 feet.



SURVEY SITE CONTROL					
FOUND NGS PUBLISHED SURVEY CONTROL					
NAD 83/11 SPC 0901 NAVD88 US SURVEY FEET					
DESIGNATION	NORTHING	EASTING	ELEVATION	AGENCY	TYPE
SJ_GPS_1_19	2123180.20	541215.33	5.72	SJC-FL	Brass Disk
DUBE-37 (RTK BASE)	2154788.54	535416.97	10.49	USACE	Brass Disk
Q 323 1970 (RTK BASE)	2143173.83	537716.07	10.51	CGS	Brass Disk
872 0291 A	2163017.33	533814.55	9.08	NGS	SS Rod
Z 322 1970 (RTK BASE)	2104565.87	546389.14	20.14	CGS	Brass Disk
VALUES DEPICTED ARE NGS PUBLISHED					
FOUND DNR "A" MONUMENTS					
NAD 83/11 SPC 0901 NAVD88 US SURVEY FEET					
DESIGNATION	NORTHING	EASTING	ELEVATION	AGENCY	TYPE
78 79 A09	2151950.61	535678.76	9.70	DNR	Brass Disk
78 79 A10	2148928.08	536384.43	13.24	DNR	Brass Disk
78 79 A14	2131446.47	540118.69	8.86	DNR	Brass Disk
78 79 A16	2129330.76	541021.32	18.52	DNR	Brass Disk
VALUES DEPICTED ARE FIELD MEASURED RESULTS FOR REFERENCE ONLY					

Refer to Sheet No. 1 for Surveyors Notes.

APPROVALS
STATE OF FLORIDA
DEPARTMENT OF ENVIRONMENTAL PROTECTION
KNOW ALL PERSONS BY THESE PRESENTS: THAT THE BUREAU OF SURVEY AND MAPPING OF THE DIVISION OF STATE LANDS, DEPARTMENT OF ENVIRONMENTAL PROTECTION OF THE STATE OF FLORIDA HEREBY APPROVES THIS PLAN.
DATED AT _____ THIS ___ DAY OF _____, 2023

M. KEVIN MEARS, PSM
FOR THE BUREAU OF SURVEY AND MAPPING.

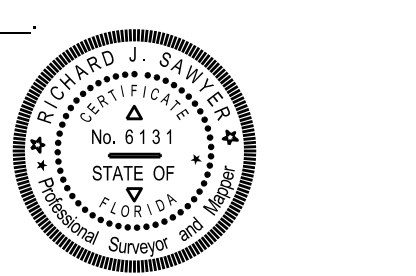
CERTIFICATE OF ACCEPTANCE AND RECORDING OF COUNTY CLERK
ACCEPTED FOR FILES AND RECORDING IN THE PUBLIC RECORDS OF ST. JOHNS COUNTY, FLORIDA, THE _____ DAY OF _____, 2023
IN EROSION BOOK _____ PAGES _____, PURSUANT TO THE PROVISIONS OF CHAPTER 161.181 FLORIDA STATUTES.

CLERK OF THE COURT

- NOTES:**
- THE BEARINGS AND COORDINATES SHOWN HEREON ARE BASED ON THE FLORIDA STATE PLANE SYSTEM, EAST ZONE (9801), RELATIVE TO THE NAD83/90 ADJUSTMENT, US SURVEY FOOT.
 - THE ELEVATIONS SHOWN HEREON ARE REFERENCED TO THE NORTH AMERICAN VERTICAL DATUM OF 1988 (NAVD88) AND ARE BASED ON FOUND NGS PUBLISHED MONUMENTATION. FOUND CONTROL MONUMENTATION DEPICTED IN CONTROL TABULATION.
 - THE MEAN HIGH WATER LINE WAS FIELD SURVEYED ON AUGUST 25-29, 2023. THE MEAN HIGH WATER LINE AND THE EROSION CONTROL LINE ARE ONE AND THE SAME.
 - THE HORIZONTAL AND VERTICAL LOCATION OF THE MEAN HIGH WATER LINE SHOWN HEREON WAS DETERMINED UTILIZING REAL TIME KINEMATIC (RTK) SURVEYING PROCEDURES. BASE STATION CORRECTIONS WERE GENERATED FROM FOUND NGS SURVEY CONTROL. CONTROL TIES WERE MADE HORIZONTALLY TO SECOND ORDER CONTROL "A" MONUMENTATION AND VERIFIED TO SAME.
 - THE MEAN HIGH WATER LINE ELEVATION IS 1.99 FEET AND 1.91 FEET (NAVD88; NTDE 1983-2001) PER MEAN HIGH WATER SURVEY PROCEDURAL APPROVAL DATED JULY 21, 2023. THE MEAN HIGH WATER LINE CHANGES AT FDEP RANGE MONUMENT R-30 FROM 1.99 FEET TO 1.91 FEET.
 - THE MEAN HIGH WATER LINE SURVEY DEPICTED HEREON COMPLIES WITH CHAPTER 177, PART II, FLORIDA STATUTES AND IS RECORDED IN THE PUBLIC REPOSITORY OF THE FLORIDA DEPARTMENT OF ENVIRONMENTAL PROTECTION BUREAU OF SURVEY AND MAPPING AS MEAN HIGH WATER FILE NO. _____.
 - PARCEL LINES LOCATIONS AND IDENTIFICATION OBTAINED FROM THE ST. JOHNS COUNTY PROPERTY APPRAISER GIS SYSTEM AND ARE NOT FIELD VERIFIED.
 - NO TITLE SEARCH, TITLE OPINION, OR ABSTRACT WAS PERFORMED NOR PROVIDED TO THIS FIRM FOR THE PARCELS SHOWN HEREON. THERE MAY BE DEEDS OF RECORD, UNRECORDED DEEDS, EASEMENTS, RIGHTS-OF-WAY, BUILDING SETBACKS, RESTRICTIVE COVENANTS, OR OTHER INSTRUMENTS WHICH COULD AFFECT THE BOUNDARIES OF USE OF THE SUBJECT PROPERTY.
 - THE AERIAL PHOTOGRAPHY SHOWN HEREON WAS OBTAINED FROM ST. JOHNS COUNTY AND IS DATED JANUARY 2023.
 - BEACH DESIGN ELEMENTS PROVIDED BY OLSEN ASSOCIATES, INC.

CERTIFICATION:
I HEREBY CERTIFY THAT THE ATTACHED MEAN HIGH WATER SURVEY AND EROSION CONTROL LINE IS AN ACCURATE REPRESENTATION OF SAID LINE AS RECENTLY SURVEYED UNDER MY PERSONAL DIRECTION ON 29 AUGUST, 2023 AND IS TRUE AND CORRECT TO THE BEST OF MY KNOWLEDGE AND BELIEF AND MEETS THE STANDARDS OF PRACTICE SET FORTH IN CHAPTER 5J-17 ADOPTED BY THE FLORIDA BOARD OF LAND SURVEYORS PURSUANT TO SECTION 472-027 OF THE FLORIDA STATUTES AND THE MEAN HIGH WATER SURVEY DEPICTED HEREON COMPLIES WITH CHAPTER 177, PART II OF THE FLORIDA STATUTES, AND IS RECORDED IN THE PUBLIC REPOSITORY OF THE FLORIDA DEPARTMENT OF ENVIRONMENTAL PROTECTION AS MEAN HIGH WATER SURVEY FILE NUMBER _____.

Richard J. Sawyer Date: _____
Professional Surveyor and Mapper No. 6131
NOT VALID WITHOUT THE SIGNATURE, DATE AND THE ORIGINAL SEAL OF A FLORIDA LICENSED SURVEYOR AND MAPPER.

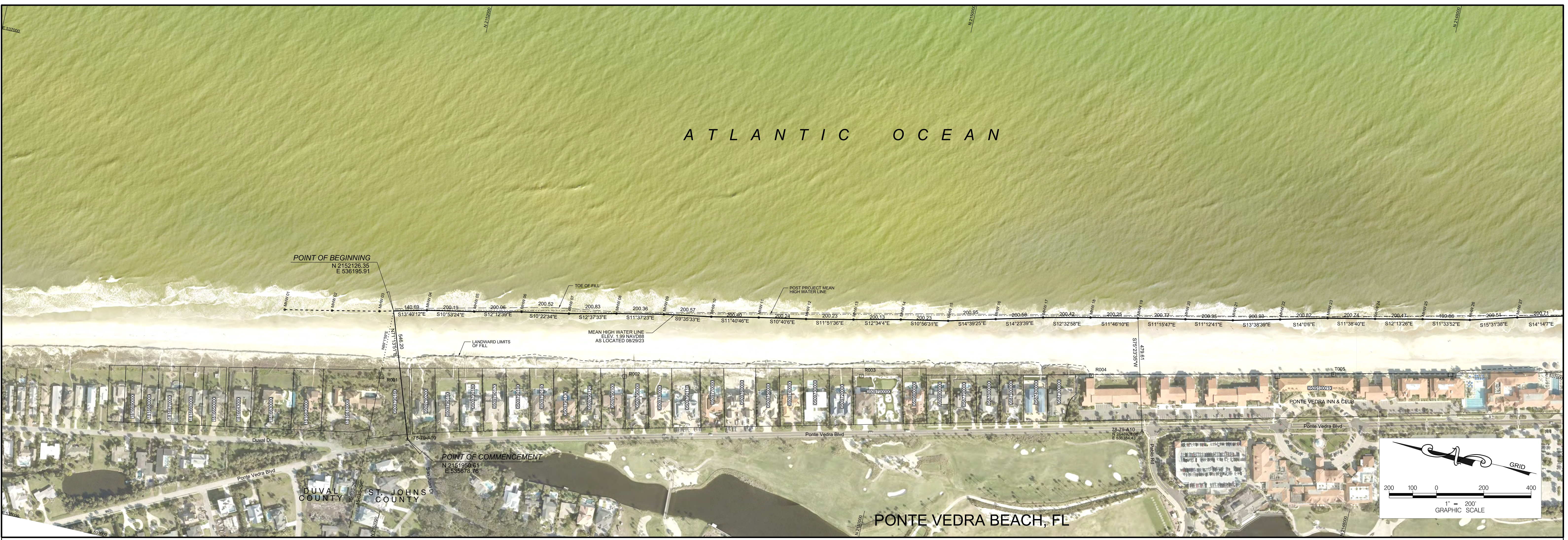


Project Title: Mean High Water Line Survey and Proposed Erosion Control Line St Johns County R-01 to R-46.2

Professional Hydrographers • Surveyors • Mappers
5202 San Juan Avenue
Jacksonville, Florida 32210
904.384.8377

LB No. 6487
Drawn By: RJS
Scale:
Plot Date: 10/19/2023
Checked By: RJS
Fld Bk / Pg: NPVB
ARC Project No.: 23-172
SHEET: 1 OF 9

ATLANTIC OCEAN



DUVAL COUNTY

PARCEL ID	OWNER NAME	PHYSICAL ADDRESS	MAILING ADDRESS
1816690000	VIRGINIA DIXON MOLLOY 2011 TRUST 2 ET AL	4213 DUVAL DR	4213 DUVAL DR, JACKSONVILLE BEACH, FL 32250
1816680000	BROWNE NANCY U TRUST	4223 DUVAL DR	4223 DUVAL DR, JACKSONVILLE BEACH, FL 32250
1816670000	JOHN P BUSH TRUST	4231 DUVAL DR	PO BOX 51334, JACKSONVILLE, FL 32240
1816660000	WILKINSON ALBERT H III	4233 DUVAL DR	4233 DUVAL DR, JACKSONVILLE BEACH, FL 32250
1816650000	HOSKINS JO ANN	4241 DUVAL DR	4241 DUVAL DR, JACKSONVILLE BEACH, FL 32250
1816643000	HODGE MICHAEL B	4335 DUVAL DR	4335 DUVAL DR, JACKSONVILLE BEACH, FL 32250
1816630000	CHAPPELL BRUCE A	4337 DUVAL DR	4337 DUVAL DR, JACKSONVILLE BEACH, FL 32250
1816620000	BACCICH LISA B TRUST	4347 DUVAL DR	4347 DUVAL DR, JACKSONVILLE BEACH, FL 32250
1816610000	HIXON JOSEPH M III, RENATE W	4349 DUVAL DR	47 PONTE VEDRA BLVD, PONTE VEDRA BEACH, FL 32082

ST JOHNS COUNTY

PARCEL ID	OWN NAME	PHYSICAL ADDRESS	MAILING ADDRESS
0509790160	HIXON JOSEPH M III, RENATE W	47 PONTE VEDRA BLVD	47 PONTE VEDRA BLVD, PONTE VEDRA BEACH, FL 32082
0509790200	OSBORN HARRIET V K REV LIVING TRUST	51 PONTE VEDRA BLVD	8316 FLEET LANDING BLVD, ATLANTIC BEACH, FL 32233
0509790150	WOTIZ ARTHUR, DEBRA	53 PONTE VEDRA BLVD	53 PONTE VEDRA BLVD, PONTE VEDRA BEACH, FL 32082
0509790180	FOUTS JOHN L, HEATHER W	55 PONTE VEDRA BLVD	55 PONTE VEDRA BLVD, PONTE VEDRA BEACH, FL 32082
0509790170	MOUNT LINCOLN DEVELOPMENT LLC	57 PONTE VEDRA BLVD	230 BRIDGE ST, VAIL, CO 81657 / C/O RODNEY SLIFER
0509790190	HALL YOUNG E JR	59 PONTE VEDRA BLVD	59 PONTE VEDRA BLVD, PONTE VEDRA BEACH, FL 32082
0509790140	FAIRBAIRN MATTHEW J, KAREN A	61 PONTE VEDRA BLVD	61 PONTE VEDRA BLVD, PONTE VEDRA BEACH, FL 32082
0509790130	MC CLAMMA T EDWARD	63 PONTE VEDRA BLVD	63 PONTE VEDRA BLVD, PONTE VEDRA BEACH, FL 32082
0509790120	BERG GILCHRIST B	65 PONTE VEDRA BLVD	4306 PABLO OAKS CT, JACKSONVILLE, FL 32224
0509790100	STRICKLAND ELIZABETH ANN REV TRUST AMEND D: 8-9-2018	67 PONTE VEDRA BLVD	2000 WEST FIRST ST STE 604 TWO PIEDMONT PLAZA, WINSTON SALEM, NC 27104
0509790000	STEIN MARTIN E JR, BROOKE P	69 PONTE VEDRA BLVD	69 PONTE VEDRA BLVD, PONTE VEDRA BEACH, FL 32082
0509780000	SANCHEZ COLLEEN A REVOCABLE TRUST	71 PONTE VEDRA BLVD	71 PONTE VEDRA BLVD, PONTE VEDRA BEACH, FL 32082
0509790110	BAKER EDWARD L II, LAUREN G	73 PONTE VEDRA BLVD	535 LAKE RD, PONTE VEDRA BEACH, FL 32082
0509770000	DODSON J THOMAS, JEAN M	75 PONTE VEDRA BLVD	75 PONTE VEDRA BLVD, PONTE VEDRA BEACH, FL 32082
0509760000	WARE CHRISTOPHER W, CYNTHIA C	77 PONTE VEDRA BLVD	315 SAN JUAN DR, PONTE VEDRA BEACH, FL 32082
0509750000	BATTEN MICHAEL R, SUSAN F	79 PONTE VEDRA BLVD	79 PONTE VEDRA BLVD, PONTE VEDRA BEACH, FL 32082
0509740000	WEAVER BRAD	81 PONTE VEDRA BLVD	24 ROY ST #26, SEATTLE, WA 98109
0509730000	FIELD CYNTHIA A TRUST D: 11-4-12	83 PONTE VEDRA BLVD	5206 S HARVARD AVE UNIT 320, TULSA, OK 74135
0509720000	COSGROVE 2011 REV TRUST D: 6-10-2011	85 PONTE VEDRA BLVD	85 PONTE VEDRA BLVD, PONTE VEDRA BEACH, FL 32082
0509700000	BAKER ROBERT B	87 PONTE VEDRA BLVD	87 PONTE VEDRA BLVD, PONTE VEDRA BEACH, FL 32082
0509800000	BURNS STEPHEN S, DEBORAH S	91 PONTE VEDRA BLVD	91 PONTE VEDRA BLVD, PONTE VEDRA BEACH, FL 32082
0509900000	CONDON GARY D	129 PONTE VEDRA BLVD	1049 PONTE VEDRA BLVD, PONTE VEDRA BEACH, FL 32082
0587700000	ECKSTEIN JOHN P REV TRUST	131 PONTE VEDRA BLVD	320 1ST STREET NORTH, STE 715, JACKSONVILLE BEACH, FL 32250
0587600000	CHAPMAN THOMAS F, KAREN H	133 PONTE VEDRA BLVD	78 LINDBERGH DR NORTHEAST UNIT #60, ATLANTA, GA 30305
0587500000	WISE R HALSEY, LISHA	135 PONTE VEDRA BLVD	135 PONTE VEDRA BLVD, PONTE VEDRA BEACH, FL 32082
0587400000	D'ALTO CONO IRREVOCABLE HOMSTE	137 PONTE VEDRA BLVD	6740 EPPING FOREST WAY N APT 105, JACKSONVILLE, FL 32217
0587300000	CHARTRAND GARY, NANCY	139 PONTE VEDRA BLVD	139 PONTE VEDRA BLVD, PONTE VEDRA BEACH, FL 32082
0509100010	PONTE VEDRA CORP	295 PONTE VEDRA BLVD	200 PONTE VEDRA BLVD, PONTE VEDRA BEACH, FL 32082

MEAN HIGH WATER LINE COORDINATE & ELEVATION VALUES			
POINT	NORTHING	EASTING	ELEVATION
MHW 01	2152576.96	536101.38	1.99
MHW 02	2152380.86	536140.98	1.99
MHW 03	2152184.53	536181.76	1.99
MHW 04	2151989.65	536229.16	1.99
MHW 05	2151793.06	536266.98	1.99
MHW 06	2151597.53	536309.30	1.99
MHW 07	2151400.28	536345.41	1.99
MHW 08	2151204.31	536389.31	1.99
MHW 09	2151008.06	536429.68	1.99
MHW 10	2150810.29	536463.10	1.99
MHW 11	2150614.03	536503.67	1.99
MHW 12	2150417.26	536540.74	1.99
MHW 13	2150221.30	536581.89	1.99
MHW 14	2150025.97	536625.44	1.99
MHW 15	2149829.38	536663.44	1.99
MHW 16	2149634.98	536714.29	1.99
MHW 17	2149440.70	536764.15	1.99
MHW 18	2149245.07	536807.70	1.99
MHW 19	2149049.03	536848.54	1.99
MHW 20	2148852.13	536887.75	1.99
MHW 21	2148655.60	536926.71	1.99
MHW 22	2148461.21	536973.89	1.99
MHW 23	2148266.36	537022.48	1.99
MHW 24	2148069.76	537063.00	1.99
MHW 25	2147873.83	537105.44	1.99
MHW 26	2147678.03	537145.51	1.99
MHW 27	2147484.84	537199.19	1.99

LEGEND	
▲	FOUND SURVEY CONTROL POINT
□	PROFILE MONITORING RANGE ORIGIN (R MONUMENT)
•	MEAN HIGH WATER LINE POINT
SJC - FL	ST JOHNS COUNTY
USACE	U.S. ARMY CORPS OF ENGINEERS
CGS	COAST AND GEODETIC SURVEY
NOS	NATIONAL OCEAN SERVICE
DNR	FLORIDA DEPARTMENT OF NATURAL RESOURCES
0000100000	PARCEL NUMBER
1000000000	MEAN HIGH WATER LINE POINT NUMBER
XXXX-XXX	SECTION-TOWNSHIP-RANGE
---	SECTION-TOWNSHIP-RANGE
---	POST CONSTRUCTION MEAN HIGH WATER LINE
---	LANDWARD LIMITS OF FILL
---	SEAWARD TOE OF FILL

HISTORIC BEACH MONITORING PROFILE ORIGIN		
DESIGNATION	NORTHING	EASTING
R001	2152114.37	535913.62
R002	2151113.04	536138.41
R003	2150136.51	536356.33
R004	2149188.41	536570.06
T005	2148190.86	536796.31

SURVEY SITE CONTROL						
FOUND NGS PUBLISHED SURVEY CONTROL						
NAD 83/11 SPC 0901 NAVD88 US SURVEY FEET						
DESIGNATION	NORTHING	EASTING	ELEVATION	AGENCY	TYPE	
SJ_GPS_119	2123180.20	541215.33	5.72	SJC-FL	Brass Disk	
DUBE-37 (RTK BASE)	2154788.54	535416.97	10.49	USACE	Brass Disk	
Q 323 1970 (RTK BASE)	2143173.83	537716.07	10.51	CGS	Brass Disk	
872 0291 A	2163017.33	533814.55	9.08	NOS	SS Rod	
Z 322 1970 (RTK BASE)	2104565.87	546389.14	20.14	CGS	Brass Disk	
VALUES DEPICTED ARE NGS PUBLISHED						
FOUND DNR "A" MONUMENTS						
NAD 83/11 SPC 0901 NAVD88 US SURVEY FEET						
DESIGNATION	NORTHING	EASTING	ELEVATION	AGENCY	TYPE	
78 79 A09	2151950.61	535678.76	9.70	DNR	Brass Disk	
78 79 A10	2148928.08	536384.43	13.24	DNR	Brass Disk	
78 79 A14	2131446.47	540118.69	8.86	DNR	Brass Disk	
78 79 A16	2129330.76	541021.32	18.52	DNR	Brass Disk	
VALUES DEPICTED ARE FIELD MEASURED RESULTS FOR REFERENCE ONLY						

Refer to Sheet No. 1 for Surveyors Notes.

DATE	BY	REVISION

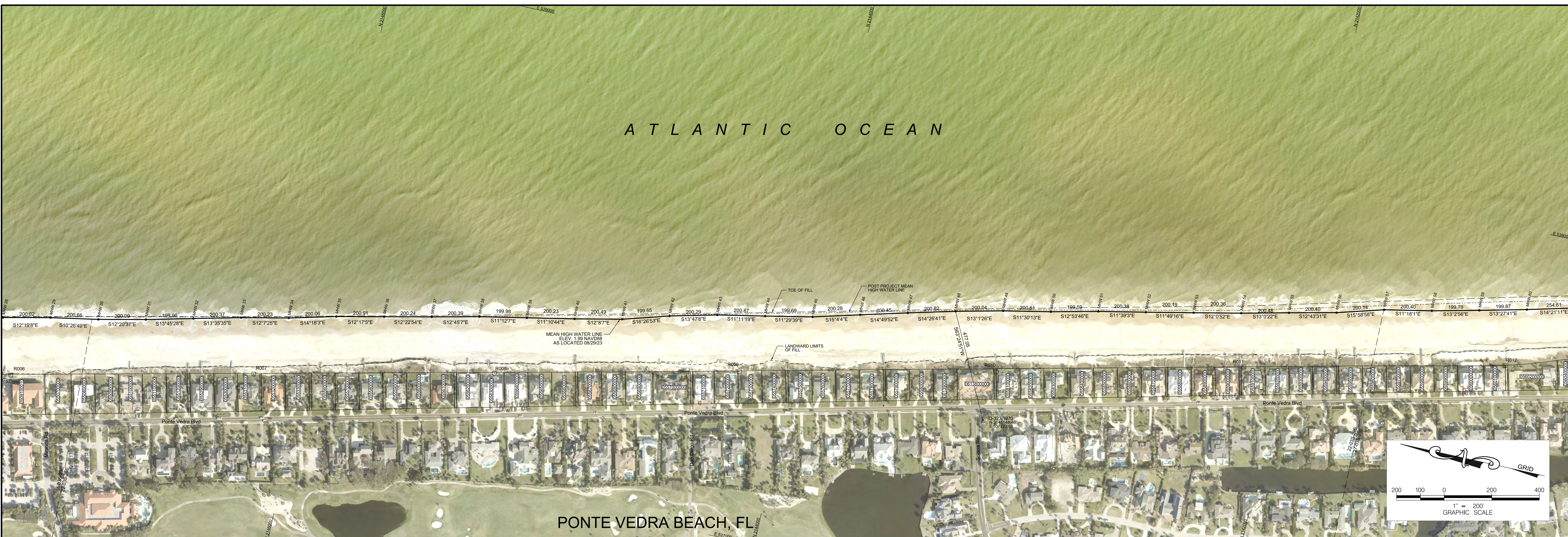
Project Title:
Mean High Water Line Survey and Proposed Erosion Control Line
St Johns County R-01 to R-46.2

Arc Surveying & Mapping, Inc.
 Professional Hydrographers • Surveyors • Mappers
 5202 San Juan Avenue
 Jacksonville, Florida 32210
 904.384.8377



LB No. 6487
 Drawn By: RJS
 Scale: 1" = 200'
 Plot Date: 10/19/2023
 Checked By: RJS
 Flt Bk / Pg: NPVB
 ARC Project No.: 23-172
 SHEET: 2 OF 9

ATLANTIC OCEAN



PONTE VEDRA BEACH, FL

PARCEL ID	OWN_NAME	PHYSICAL ADDRESS	MAILING ADDRESS
0509100010	PONTE VEDRA CORP	295 PONTE VEDRA BLVD	200 PONTE VEDRA BLVD, PONTE VEDRA BEACH, FL 32082
0509790220	PONTE VEDRA CORPORATION	0 PONTE VEDRA BLVD	9540 SAN JOSE BLVD, JACKSONVILLE, FL 32257
0550700000	PONTE VEDRA CORPORATION	301 PONTE VEDRA BLVD	200 PONTE VEDRA BLVD, PONTE VEDRA BEACH, FL 32082
0550800000	PONTE VEDRA CORPORATION INC	303 PONTE VEDRA BLVD	200 PONTE VEDRA BLVD, PONTE VEDRA BEACH, FL 32082
0550900000	PONTE VEDRA CORPORATION	305 PONTE VEDRA BLVD	200 PONTE VEDRA BLVD, PONTE VEDRA BEACH, FL 32082
0551000000	CRANBERG ALEXIS MOUNT AND CRANBER CATHY NEVILLE	307 PONTE VEDRA BLVD	307 PONTE VEDRA BLVD, PONTE VEDRA BEACH, FL 32082
0551100000	JENKINS TIM M,PATRICIA H	309 PONTE VEDRA BLVD	309 PONTE VEDRA BLVD, PONTE VEDRA BEACH, FL 32082
0551200000	SHARK TOOTH LLC	311 PONTE VEDRA BLVD	307 PONTE VEDRA BLVD, PONTE VEDRA BEACH, FL 32082
0552900000	JONES GREGORY P,TAMMY L	313 PONTE VEDRA BLVD	313 PONTE VEDRA BLVD, PONTE VEDRA BEACH, FL 32082
0553000000	ASHOURIAN MIKE,ELAINE D	315 PONTE VEDRA BLVD	315 PONTE VEDRA BLVD, PONTE VEDRA BEACH, FL 32082
0553100000	CARTER FRANK III REVOCABLE TRU	317 PONTE VEDRA BLVD	2426 STONEHEDGE RD, THE PLAINS, VA 20198
0553200000	GLISSON DONALD FRANK JR,CAROLY	319 PONTE VEDRA BLVD	319 PONTE VEDRA BLVD, PONTE VEDRA BEACH, FL 32082
0553300000	GABRIELSEN BARBARA SWIFT	321 PONTE VEDRA BLVD	321 PONTE VEDRA BLVD, PONTE VEDRA BEACH, FL 32082
0555600000	WALKER JOSEPH S JR,AMELIE W	323 PONTE VEDRA BLVD	323 PONTE VEDRA BLVD, PONTE VEDRA BEACH, FL 32082
0555700000	BACHAND STEPHEN E,PHYLLIS C	325 PONTE VEDRA BLVD	325 PONTE VEDRA BLVD, PONTE VEDRA BEACH, FL 32082
0555800000	DEMETREE MARK,CHRISTINA	327 PONTE VEDRA BLVD	327 PONTE VEDRA BLVD, PONTE VEDRA BEACH, FL 32082
0555900000	WILSON STEPHANIE K	329 PONTE VEDRA BLVD	329 PONTE VEDRA BLVD, PONTE VEDRA BEACH, FL 32082
0556000000	PV2023 LLC	331 PONTE VEDRA BLVD	424 E CALL ST, TALLAHASSEE, FL 32301
0556100000	RICK EMMIE BRIDGES ROBINSON	333 PONTE VEDRA BLVD	PO BOX 2853, PONTE VEDRA BEACH, FL 32004
0556200000	PACE FAMILY REV TRUST D: 9-19-	335 PONTE VEDRA BLVD	335 PONTE VEDRA BLVD, PONTE VEDRA BEACH, FL 32082
0556300000	337PVB LLC	337 PONTE VEDRA BLVD	450-106 SR13N #112, SAINT JOHNS, FL 32259
0556400000	339 PVB LLC	339 PONTE VEDRA BLVD	ONE INDEPENDENT DR SUITE 1200, JACKSONVILLE, FL 32202
0556500000	MORGAN CANDACE C	341 PONTE VEDRA BLVD	3182 BRANDY STATION, ATLANTA, GA 30339
0556600000	WILLIAMS JENNIFER ETAL	343 PONTE VEDRA BLVD	2913 PEBBLEWOOD DR,VALDOSTA, GA 31602
0556700000	BILOTTA OSVALDO,KRISTINE M	345 PONTE VEDRA BLVD	345 PONTE VEDRA BLVD, PONTE VEDRA BEACH, FL 32082
0556800000	CLEMENTS MARGARET POU	347 PONTE VEDRA BLVD	347 PONTE VEDRA BLVD, PONTE VEDRA BEACH, FL 32082
0556900000	AITKEN CHRISTOPHER C,LETITIA R	349 PONTE VEDRA BLVD	349 PONTE VEDRA BLVD, PONTE VEDRA BEACH, FL 32082
0557000000	MUNOZ OSCAR LVG TRUST ETAL	351 PONTE VEDRA BLVD	351 PONTE VEDRA BLVD, PONTE VEDRA BEACH, FL 32082
0557100000	HUGHES PATRICIA	401 PONTE VEDRA BLVD	401 PONTE VEDRA BLVD, PONTE VEDRA BEACH, FL 32082
0557200000	FOLEY DAVID PATRICK	403 PONTE VEDRA BLVD	403 PONTE VEDRA BLVD, PONTE VEDRA BEACH, FL 32082
0557300000	STARLING JOHN CARROLL,MEGHAN M	405 PONTE VEDRA BLVD	326 PONTE VEDRA BLVD, PONTE VEDRA BEACH, FL 32082
0557400000	BRUNNER JOHN,JANELL FAMILY TRU	407 PONTE VEDRA BLVD	407 PONTE VEDRA BLVD, PONTE VEDRA BEACH, FL 32082

PARCEL ID	OWN_NAME	PHYSICAL ADDRESS	MAILING ADDRESS
0557500000	ROSEN STEPHEN DANIEL,PENNY ALL	409 PONTE VEDRA BLVD	409 PONTE VEDRA BLVD, PONTE VEDRA BEACH, FL 32082
0557600000	TRIPLE T ASSOCIATES	411 PONTE VEDRA BLVD	1451 1ST ST N #503, JACKSONVILLE BEACH, FL 32250
0557700000	DALTON SUZANNE B	413 PONTE VEDRA BLVD	413 PONTE VEDRA BLVD, PONTE VEDRA BEACH, FL 32082
0557800000	SCHWARTZ RYAN A	415 PONTE VEDRA BLVD	415 PONTE VEDRA BLVD, PONTE VEDRA BEACH, FL 32082
0557900000	PHILBIN PHILLIP A	417 PONTE VEDRA BLVD	417 PONTE VEDRA BLVD, PONTE VEDRA BEACH, FL 32082
0558000000	SYNOVUS TRUST CO SUCCESSOR TRU	419 PONTE VEDRA BLVD	PO BOX 23024, COLUMBUS, GA 31902
0613900000	GOLD STEVEN,KATHERINE	421 PONTE VEDRA BLVD	421 PONTE VEDRA BLVD, PONTE VEDRA BEACH, FL 32082
0613800000	STEPHENSON JAMES E,DONNA Y	423 PONTE VEDRA BLVD	423 PONTE VEDRA BLVD, PONTE VEDRA BEACH, FL 32082
0558100000	KAPPAZ WILLIAM J,LAURA M	501 PONTE VEDRA BLVD	501 PONTE VEDRA BLVD, PONTE VEDRA BEACH, FL 32082
0558200000	BAKER THOMPSON S II,MARTHA F	503 PONTE VEDRA BLVD	503 PONTE VEDRA BLVD, PONTE VEDRA BEACH, FL 32082
0558300000	WATSON DOROTHY MCLANAHAN QUALI	505 PONTE VEDRA BLVD	20 CLUB FOREST LN, GREENVILLE, SC 29605
0549600000	SOUTHSIDE BOULEVARD LAND COMPANY	162 PONTE VEDRA BLVD	9540 SAN JOSE BLVD, JACKSONVILLE, FL 32257
0558400000	OTERO DAVID E,GAIL M	507 PONTE VEDRA BLVD	507 PONTE VEDRA BLVD, PONTE VEDRA BEACH, FL 32082
0558500000	MARTIN SCOTT G,KAREN L	509 PONTE VEDRA BLVD	509 PONTE VEDRA BLVD, PONTE VEDRA BEACH, FL 32082
0558600000	MADSON LAWRENCE E JR,MARTHA T	511 PONTE VEDRA BLVD	511 PONTE VEDRA BLVD, PONTE VEDRA BEACH, FL 32082
0558700000	WIDEWATER TRUST	513 PONTE VEDRA BLVD	4314 PABLO OAKS CT, JACKSONVILLE, FL 32224
0558800000	DEGOEY THOMAS R,AMY B	537 PONTE VEDRA BLVD	3636 BOGAN SPRINGS DR, BUFORD, GA 30519
0558900000	DIRCKS THOMAS C,ANNETTE	517 PONTE VEDRA BLVD	517 PONTE VEDRA BLVD, PONTE VEDRA BEACH, FL 32082
0559000000	BONEY PAISELY IV	519 PONTE VEDRA BLVD	643 PONTE VEDRA BLVD UNIT D, PONTE VEDRA BEACH, FL 32082
0559100000	CROWE CAMERON DALEY REVOCABLE	521 PONTE VEDRA BLVD	2732 SOUTHWOOD RD, BIRMINGHAM, AL 35223
0559200000	HAYFORD MICHAEL D, JILL K 1997	523 PONTE VEDRA BLVD	1301 PEACHTREE ST NE UNIT 5C, ATLANTA, GA 30309
0559300000	WILSON JERRY S JR,VIRGINIA K	525 PONTE VEDRA BLVD	830 A1A N STE 13 #316, PONTE VEDRA BEACH, FL 32082
0559400000	CARON HUGHES C,ATERINA	527 PONTE VEDRA BLVD	527 PONTE VEDRA BLVD, PONTE VEDRA BEACH, FL 32082
0559500000	BAKER JOHN D II REVOCABLE LIVI	529 PONTE VEDRA BLVD	200 W FORSYTH ST FL 7, JACKSONVILLE, FL 32202
0559600000	AMOS KATHELEN V	531 PONTE VEDRA BLVD	PO BOX 5566, COLUMBUS, GA 31906
0559700000	GREGG SIMON N	533 PONTE VEDRA BLVD	533 PONTE VEDRA BLVD, PONTE VEDRA BEACH, FL 32082
0559800000	LINDNER KEITH E LIVING TRUST	535 PONTE VEDRA BLVD	8251 CORNELL RD #120,CINCINNATI, OH 45249
0559900000	LEONARD EARL T JR,BEBE BRUMBY	537 PONTE VEDRA BLVD	537 PONTE VEDRA BLVD, PONTE VEDRA BEACH, FL 32082
0560000000	CHAPMAN LEAH H 2012 REVOCABLE	539 PONTE VEDRA BLVD	539 PONTE VEDRA BLVD, PONTE VEDRA BEACH, FL 32082
0560100000	SETTLER STEVEN R,SHERRY L	541 PONTE VEDRA BLVD	1217 OSCEOLA AVE, JACKSONVILLE BEACH, FL 32250
0560200000	WALTON WILLIAM H III QUALIFIED	545 PONTE VEDRA BLVD	ONE INDEPENDENT DR SUITE 1600,JACKSONVILLE, FL 32202
0560400000	RUFFIN ELIZABETH WOOD ETAL	549 PONTE VEDRA BLVD	28 PLAYERS CLUB VILLAS, PONTE VEDRA, FL 32082

MEAN HIGH WATER LINE COORDINATE & ELEVATION VALUES			
POINT	NORTHING	EASTING	ELEVATION
MHW 28	2147290.29	537248.54	1.99
MHW 29	2147094.88	537291.21	1.99
MHW 30	2146897.55	537327.60	1.99
MHW 31	2146702.08	537370.37	1.99
MHW 32	2146507.86	537417.93	1.99
MHW 33	2146313.10	537465.02	1.99
MHW 34	2146117.33	537507.07	1.99
MHW 35	2145923.48	537556.49	1.99
MHW 36	2145727.17	537599.24	1.99
MHW 37	2145531.59	537642.17	1.99
MHW 38	2145336.14	537686.40	1.99
MHW 39	2145139.97	537725.25	1.99
MHW 40	2144943.54	537764.07	1.99
MHW 41	2144747.53	537806.22	1.99
MHW 42	2144556.05	537862.75	1.99
MHW 43	2144361.53	537910.47	1.99
MHW 44	2144164.48	537949.45	1.99
MHW 45	2143968.79	537989.24	1.99
MHW 46	2143775.39	538041.31	1.99
MHW 47	2143581.62	538092.62	1.99
MHW 48	2143387.34	538142.66	1.99
MHW 49	2143192.45	538187.74	1.99
MHW 50	2142995.87	538227.75	1.99
MHW 51	2142801.32	538272.29	1.99
MHW 52	2142605.07	538312.76	1.99
MHW 53	2142409.13	538353.77	1.99
MHW 54	2142213.16	538395.48	1.99
MHW 55	2142017.82	538440.59	1.99
MHW 56	2141822.34	538484.74	1.99
MHW 57	2141629.94	538539.85	1.99
MHW 58	2141433.42	538579.11	1.99
MHW 59	2141238.80	538624.22	1.99
MHW 60	2141044.42	538670.75	1.99

LEGEND	
▲	FOUND SURVEY CONTROL POINT
□	PROFILE MONITORING RANGE ORIGIN (R MONUMENT)
•	MEAN HIGH WATER LINE POINT
▲	ST. JOHNS COUNTY
USACE - FL	U.S. ARMY CORPS OF ENGINEERS
CGS	COAST AND GEODETIC SURVEY
NOS	NATIONAL OCEANIC SURVEY
DNR	FLORIDA DEPARTMENT OF NATURAL RESOURCES
0509100010	PARCEL NUMBER
0509100010	MEAN HIGH WATER LINE POINT NUMBER
XXXX-XXX-XXX	SECTION-TOWNSHIP-RANGE
---	SECTION-TOWNSHIP-RANGE
---	POST CONSTRUCTION MEAN HIGH WATER LINE
---	LANDWARD LIMITS OF FILL
---	SEAWARD TOE OF FILL

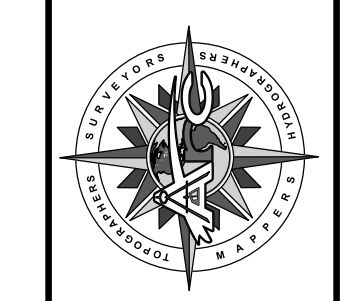
HISTORIC BEACH MONITORING PROFILE ORIGIN		
DESIGNATION	NORTHING	EASTING
R006	2147206.19	537019.58
R007	2146210.18	537245.03
R008	2145223.17	537467.74
R009	2144219.49	537697.08
R010	2143165.29	537929.94
R011	2142153.24	538177.25
R012	2141083.65	538421.07

SURVEY SITE CONTROL						
FOUND NGS PUBLISHED SURVEY CONTROL						
NAD 83/11 SPC 0901 NAVD88 US SURVEY FEET						
DESIGNATION	NORTHING	EASTING	ELEVATION	AGENCY	TYPE	
SJ_GPS_119	2123180.20	541215.33	5.72	SIC-FL	Brass Disk	
DUBE-37 (RTK BASE)	2154788.54	535416.97	10.49	USACE	Brass Disk	
Q 323 1970 (RTK BASE)	2143173.83	537716.07	10.51	CGS	Brass Disk	
872 0291 A	2163017.33	533814.55	9.08	NOS	SS Rod	
Z 322 1970 (RTK BASE)	2104565.87	546389.14	20.14	CGS	Brass Disk	
VALUES DEPICTED ARE NGS PUBLISHED						
FOUND DNR "A" MONUMENTS						
NAD 83/11 SPC 0901 NAVD88 US SURVEY FEET						
DESIGNATION	NORTHING	EASTING	ELEVATION	AGENCY	TYPE	
78 79 A09	2145950.61	535678.76	9.70	DNR	Brass Disk	
78 79 A10	2148928.08	536384.43	13.24	DNR	Brass Disk	
78 79 A14	2131446.47	540138.69	8.86	DNR	Brass Disk	
78 79 A16	2129330.76	541021.32	18.52	DNR	Brass Disk	
VALUES DEPICTED ARE FIELD MEASURED RESULTS FOR REFERENCE ONLY						

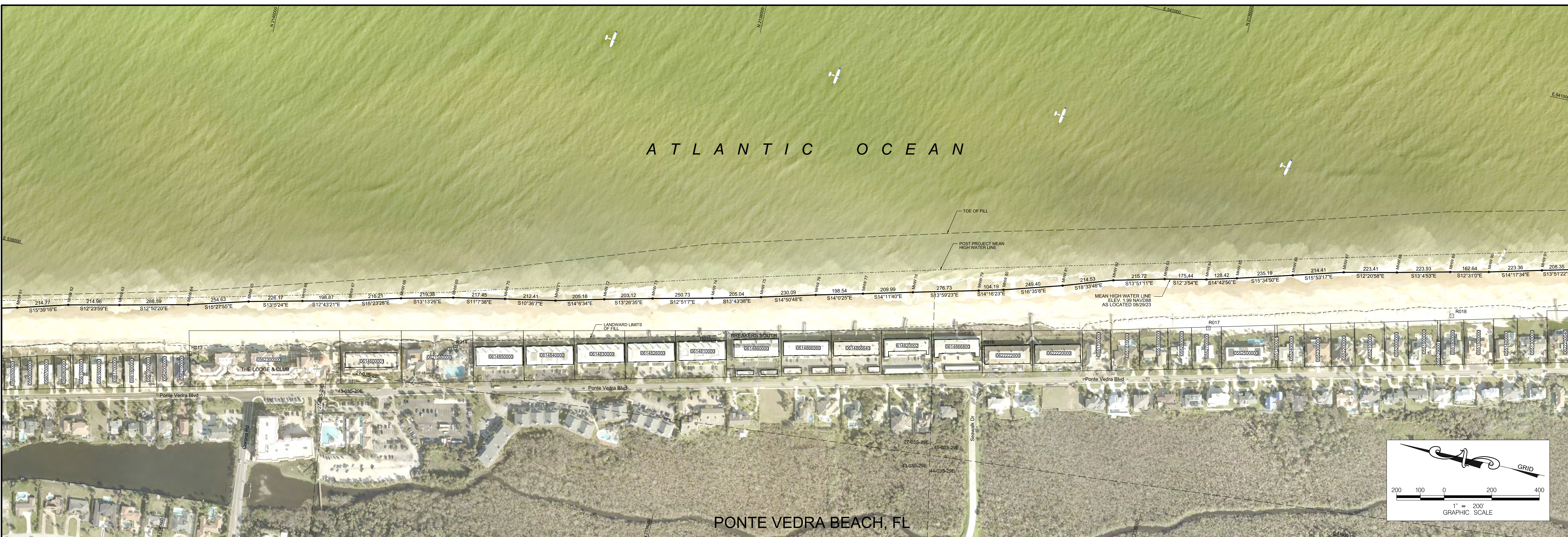
DATE	BY	REVISION

Project Title:
Mean High Water Line Survey and Proposed Erosion Control Line
St Johns County R-01 to R-46.2

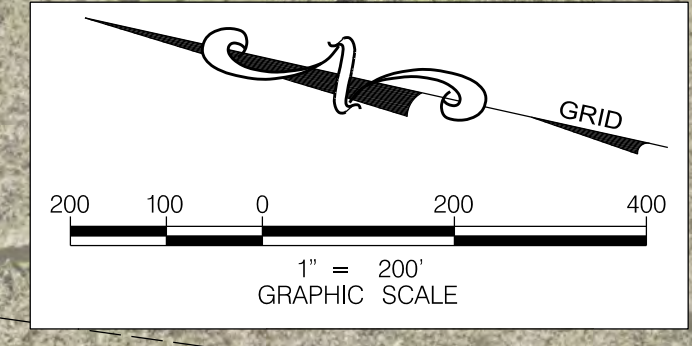
Arc Surveying & Mapping, Inc.
 Professional Hydrographers • Mappers
 5202 San Juan Avenue
 Jacksonville, Florida 32210
 904.384.8377



LB No. 6487
 Drawn By: RJS
 Scale: 1" = 200'
 Plot Date: 10/19/2023
 Checked By: RJS
 Fld Bk / Pg: NPVB
 ARC Project No.: 23-172



PONTE VEDRA BEACH, FL



PARCEL ID	OWN NAME	PHYSICAL ADDRESS	MAILING ADDRESS
056040000	RUFFIN ELIZABETH WOOD ETAL	549 PONTE VEDRA BLVD	28 PLAYERS CLUB VILLAS, PONTE VEDRA, FL 32082
056050000	BUSHONG CHARLES LIVING TRUST D	551 PONTE VEDRA BLVD	551 PONTE VEDRA BLVD, PONTE VEDRA BEACH, FL 32082
056060000	CROWLEY THOMAS B JR,CHRISTINE	553 PONTE VEDRA BLVD	830 A1A NORTH,SUITE 13-623,PONTE VEDRA BEACH, FL 32082
056070000	LINDSEY KATHERINE C PONTE VEDR	555 PONTE VEDRA BLVD	13640 MANDARIN RD, JACKSONVILLE, FL 32223
056080000	ROCHOW KIMBERLEY GOODLOE TRUST	557 PONTE VEDRA BLVD	45 IVY CHASE NE, ATLANTA, GA 30342
056150000	NICHOLS KAY REVOCABLE TRUST	559 PONTE VEDRA BLVD	559 PONTE VEDRA BLVD, PONTE VEDRA BEACH, FL 32082
056160000	MILO STEPHEN	135 PONTE VEDRA BLVD	561 PONTE VEDRA BLVD, PONTE VEDRA BEACH, FL 32082
056170000	PEERY NATALIE LIVING TRUST D:O	563 PONTE VEDRA BLVD	563 PONTE VEDRA BLVD, PONTE VEDRA BEACH, FL 32082
056180000	BARRIE KIMBERLY TRUST	565 PONTE VEDRA BLVD	565 PONTE VEDRA BLVD, PONTE VEDRA BEACH, FL 32082
056190000	RIDER NEAL ET AL	567 PONTE VEDRA BLVD	2200 VICTORY AVE UNIT 2005, DALLAS, TX 75219
056200000	RAMEZANI HOSSEIN,SUSAN	569 PONTE VEDRA BLVD	569 PONTE VEDRA BLVD, PONTE VEDRA BEACH, FL 32082
056210000	YOUNG KIMBERLY H	571 PONTE VEDRA BLVD	707 PENINSULAR PL,JACKSONVILLE, FL 32204
056230000	LODGE AT PVB LTD THE	607 PONTE VEDRA BLVD	200 PONTE VEDRA BLVD, PONTE VEDRA BEACH, FL 32082
061460001	LAS MIRANDAS OCEANSIDE CONDO	607 PONTE VEDRA BLVD	461 A1A BEACH BLVD, ST AUGUSTINE, FL 32080
062158000	CWI SAWGRASS HOTEL LLC	619 PONTE VEDRA BLVD	250 VESEY ST ATTN: A. LANCASTER, NEW YORK, NY 10020
061485000	PONTE VEDRA BREAKERS V CONDO	621 PONTE VEDRA BLVD	3201 SAWGRASS VILLAGE CIRCLE, PONTE VEDRA BEACH, FL 32082
061484000	PONTE VEDRA BREAKERS IV CONDO	627 PONTE VEDRA BLVD	3201 SAWGRASS VILLAGE CIRCLE, PONTE VEDRA BEACH, FL 32082
061483000	PONTE VEDRA BREAKERS III CONDO	633 PONTE VEDRA BLVD	3201 SAWGRASS VILLAGE CIRCLE, PONTE VEDRA BEACH, FL 32082
061482600	PONTE VEDRA BREAKERS II CONDO	639 PONTE VEDRA BLVD	3201 SAWGRASS VILLAGE CIRCLE, PONTE VEDRA BEACH, FL 32082
061481000	PONTE VEDRA BREAKERS CONDO	645 PONTE VEDRA BLVD	3201 SAWGRASS VILLAGE CIRCLE, PONTE VEDRA BEACH, FL 32082
061486000	PONTE VEDRA BREAKERS SOUTH CON	651 PONTE VEDRA BLVD	3201 SAWGRASS VILLAGE CIRCLE, PONTE VEDRA BEACH, FL 32082
061486650	PONTE VEDRA RETREAT II CONDO	657 PONTE VEDRA BLVD	3201 SAWGRASS VILLAGE CIRCLE, PONTE VEDRA BEACH, FL 32082
061486640	PONTE VEDRA RETREAT III CONDO	665 PONTE VEDRA BLVD	3201 SAWGRASS VILLAGE CIRCLE, PONTE VEDRA BEACH, FL 32082

PARCEL ID	OWN NAME	PHYSICAL ADDRESS	MAILING ADDRESS
061482002	THE WHITEHALL CONDO	673 PONTE VEDRA BLVD	31 W ADAMS ST SUITE 102,JACKSONVILLE, FL 32202
061486680	PONTE VEDRA RETREAT V CONDO	683 PONTE VEDRA BLVD	3201 SAWGRASS VILLAGE CIRCLE, PONTE VEDRA BEACH, FL 32082
062222200	OCEAN MANOR AT PONTE VEDRA II	693 PONTE VEDRA BLVD	3201 SAWGRASS VILLAGE CIRCLE, PONTE VEDRA BEACH, FL 32082
062222000	OCEAN MANOR AT PONTE VEDRA CON	695 PONTE VEDRA BLVD	3201 SAWGRASS VILLAGE CIRCLE, PONTE VEDRA BEACH, FL 32082
055170000	STAM NICKOLAS ET AL	697 PONTE VEDRA BLVD	697 PONTE VEDRA BLVD, PONTE VEDRA BEACH, FL 32082
055161000	SCARBROUGH JOHN R,ELIZABETH A	699 PONTE VEDRA BLVD	699 PONTE VEDRA BLVD, PONTE VEDRA BEACH, FL 32082
055160000	STETSON UNIVERSITY INC	701 PONTE VEDRA BLVD	421 N WOODLAND BLVD UNIT 8278, DELAND, FL 32723
055280000	SPIRITOS SAMUEL M,CELIA G	703 PONTE VEDRA BLVD	2138 ROSE THEATRE CIR, OLNEY, MD 20832
055270000	SWIFT FAMILY PROPERTY INVESTME	705 PONTE VEDRA BLVD	6005 GREEN ISLAND DR, COLUMBUS, GA 31904
055250000	BLASE FRANK,DANIELA	707 PONTE VEDRA BLVD	WILDPHAL 10, 51429 BERGISCHE GLADBACH, GERMANY, 0
055129001	BEN'S WALKWAY LLC	707 PONTE VEDRA BLVD	707 PONTE VEDRA BLVD, PONTE VEDRA BEACH, FL 32082
055240000	BLASE FRANK,DANIELA	711 PONTE VEDRA BLVD	WILDPHAL 10, 51429 BERGISCHE GLADBACH, GERMANY, 0
055230000	GUPTA ANAND S,CARMEILITA D	713 PONTE VEDRA BLVD	PO BOX 56164, JACKSONVILLE, FL 32241
055220000	MCGOUGH NANCY L REVOCABLE TRUS	715 PONTE VEDRA BLVD	715 PONTE VEDRA BLVD, PONTE VEDRA BEACH, FL 32082
055210000	DESMEDT ROBERT,DALE	717 PONTE VEDRA BLVD	717 PONTE VEDRA BLVD, PONTE VEDRA BEACH, FL 32082
055200000	PRESTIGE WORLDWIDE BC LLC	719 PONTE VEDRA BLVD	7880 GATE PKWY STE 300, JACKSONVILLE, FL 32256
055190000	O'HAREN DAVID M,BRANDI R	721 PONTE VEDRA BLVD	721 PONTE VEDRA BLVD, PONTE VEDRA BEACH, FL 32082
055129001	BEN'S WALKWAY LLC	721 PONTE VEDRA BLVD	707 PONTE VEDRA BLVD, PONTE VEDRA BEACH, FL 32082
055180000	MARION RANDALL L,BETTY J	723 PONTE VEDRA BLVD	153 SAILVIEW RD, MOORESVILLE, NC 28117
055150000	SIEGEL RICHARD D,JENNIFER S	725 PONTE VEDRA BLVD	6 SUMMIT AVE, LARCHMONT, NY 10538
055140000	KAUFMAN KENNETH W,LAURA T	727 PONTE VEDRA BLVD	727 PONTE VEDRA BLVD, PONTE VEDRA BEACH, FL 32082
055130000	WOESTE JOHN T JR ETAL	729 PONTE VEDRA BLVD	729 PONTE VEDRA BLVD, PONTE VEDRA BEACH, FL 32082
062225004	VON DER AHE PETER,SARAH	733 PONTE VEDRA BLVD	733 PONTE VEDRA BLVD, PONTE VEDRA BEACH, FL 32082

MEAN HIGH WATER LINE COORDINATE & ELEVATION VALUES			
POINT	NORTHING	EASTING	ELEVATION
MHW 61	2140797.76	538733.87	1.99
MHW 62	2140590.96	538791.82	1.99
MHW 63	2140381.01	538837.98	1.99
MHW 64	2140099.63	538902.10	1.99
MHW 65	2139854.23	538970.00	1.99
MHW 66	2139633.94	539021.22	1.99
MHW 67	2139439.94	539065.02	1.99
MHW 68	2139231.49	539122.41	1.99
MHW 69	2139017.93	539172.59	1.99
MHW 70	2138804.56	539214.56	1.99
MHW 71	2138595.77	539253.64	1.99
MHW 72	2138396.79	539303.65	1.99
MHW 73	2138199.23	539350.88	1.99
MHW 74	2137954.78	539406.65	1.99
MHW 75	2137755.60	539455.30	1.99
MHW 76	2137533.19	539514.26	1.99
MHW 77	2137340.56	539562.31	1.99
MHW 78	2137136.97	539613.81	1.99
MHW 79	2136868.45	539680.71	1.99
MHW 80	2136767.47	539706.39	1.99
MHW 81	2136528.44	539777.59	1.99
MHW 82	2136325.08	539845.88	1.99
MHW 83	2136115.63	539897.53	1.99
MHW 84	2135944.06	539934.20	1.99
MHW 85	2135819.86	539966.82	1.99
MHW 86	2135593.31	540029.99	1.99
MHW 87	2135387.09	540088.69	1.99
MHW 88	2135168.85	540136.47	1.99
MHW 89	2134950.73	540187.15	1.99
MHW 90	2134791.95	540222.40	1.99
MHW 91	2134575.51	540277.54	1.99

LEGEND

- △ FOUND SURVEY CONTROL POINT
- PROFILE MONITORING RANGE ORIGIN (R MONUMENT)
- MEAN HIGH WATER LINE POINT
- ST JOHN'S COUNTY
- USACE U.S. ARMY CORPS OF ENGINEERS
- CGS COAST AND GEODETIC SURVEY
- NOS NATIONAL OCEANIC SURVEY
- DNR FLORIDA DEPARTMENT OF NATURAL RESOURCES
- 0560910000 PARCEL NUMBER
- MEAN HIGH WATER LINE POINT NUMBER
- SECTION-TOWNSHIP-RANGE
- SECTION-TOWNSHIP-RANGE
- POST CONSTRUCTION MEAN HIGH WATER LINE
- LANDWARD LIMITS OF FILL
- SEAWARD TOE OF FILL

SURVEY SITE CONTROL						
FOUND NGS PUBLISHED SURVEY CONTROL						
NAD 83/11 SPC 0901 NAVD88 US SURVEY FEET						
DESIGNATION	NORTHING	EASTING	ELEVATION	AGENCY	TYPE	
SJ_GPS_119	2123180.20	541215.33	5.72	SJC-FL	Brass Disk	
DUBE-37 (RTK BASE)	2154788.54	535416.97	10.49	USACE	Brass Disk	
Q 323 1970 (RTK BASE)	2143173.83	537716.07	10.51	CGS	Brass Disk	
872 0291 A	2163017.33	533814.55	9.08	NOS	SS Rod	
Z 322 1970 (RTK BASE)	2104565.87	546389.14	20.14	CGS	Brass Disk	
VALUES DEPICTED ARE NGS PUBLISHED						
FOUND DNR "A" MONUMENTS						
NAD 83/11 SPC 0901 NAVD88 US SURVEY FEET						
DESIGNATION	NORTHING	EASTING	ELEVATION	AGENCY	TYPE	
78 79 A09	2151950.61	535678.76	9.70	DNR	Brass Disk	
78 79 A10	2148928.08	536384.43	13.24	DNR	Brass Disk	
78 79 A14	2131446.47	540118.69	8.86	DNR	Brass Disk	
78 79 A16	2129330.76	541021.32	18.52	DNR	Brass Disk	
VALUES DEPICTED ARE FIELD MEASURED RESULTS FOR REFERENCE ONLY						

HISTORIC BEACH MONITORING PROFILE ORIGIN		
DESIGNATION	NORTHING	EASTING
R013	2140048.21	538703.11
R014	2138963.91	538969.92
R015	2137910.60	539233.50
R016	2136800.92	539450.41
R017	2135891.84	539736.15
R018	2134903.83	540008.39

Refer to Sheet No. 1 for Surveyors Notes.

Project Title: Mean High Water Line Survey and Proposed Erosion Control Line and St Johns County R-01 to R-46.2

Professional Hydrographers • Surveyors • Mappers
5202 San Juan Avenue
Jacksonville, Florida 32210
904.384.8377

LB No. 6487
Drawn By: RJS
Scale: 1" = 200'
Plot Date: 10/19/2023
Checked By: RJS
Fld Bk / Pg: NPVB
ARC Project No.: 23-172

SHEET: 4 OF 9



LEGEND

- ▲ FOUND SURVEY CONTROL POINT
- PROFILE MONITORING RANGE ORIGIN (R MONUMENT)
- MEAN HIGH WATER LINE POINT
- ST JOHNS COUNTY
- USACE U.S. ARMY CORPS OF ENGINEERS
- CGS COAST AND GEODETIC SURVEY
- NOS NATIONAL OCEANIC SURVEY
- DNR FLORIDA DEPARTMENT OF NATURAL RESOURCES
- 000000000 PARCEL NUMBER
- MEAN HIGH WATER LINE POINT NUMBER
- SECTION-TOWNSHIP-RANGE
- SECTION-TOWNSHIP-RANGE
- POST CONSTRUCTION MEAN HIGH WATER LINE
- LANDWARD LIMITS OF FILL
- SEAWARD TOE OF FILL

PARCEL ID	OWN NAME	PHYSICAL ADDRESS	MAILING ADDRESS
0622250000	WALSH JAY L, BARBARA G	735 PONTE VEDRA BLVD	735 PONTE VEDRA BLVD, PONTE VEDRA BEACH, FL 32082
0622250030	HILLERSON ARLENE B	737 PONTE VEDRA BLVD	801 WAYNE AVE SUITE 300, SILVER SPRING, MD 20910
0622250020	WOLF DALE B REVOC TRUST D:3-9-	801 PONTE VEDRA BLVD	801 PONTE VEDRA BLVD, PONTE VEDRA BEACH, FL 32082
0619600000	KLEMPF KEVIN JACQUES LIVING TR	815 PONTE VEDRA BLVD	815 PONTE VEDRA BLVD, PONTE VEDRA BEACH, FL 32082
0619650000	SCHEIDEL MIYUKI K	821 PONTE VEDRA BLVD	821 PONTE VEDRA BLVD, PONTE VEDRA BEACH, FL 32082
0619700000	DELANEY DAVID P JR, JOAN E	823 PONTE VEDRA BLVD	823 PONTE VEDRA BLVD, PONTE VEDRA BEACH, FL 32082
0554100000	SHVARTZMAN LEONARD A, ARLETTE N	825 PONTE VEDRA BLVD	825 PONTE VEDRA BLVD, PONTE VEDRA BEACH, FL 32082
0554000000	CLEGG JOHN M QUALIFIED PERSONA	827 PONTE VEDRA BLVD	827 PONTE VEDRA BLVD, PONTE VEDRA BEACH, FL 32082
0553900000	FAGAN WILLIAM FRANCIS	829 PONTE VEDRA BLVD	PO BOX 1789, PONTE VEDRA BEACH, FL 32004
0553800000	GREBE MICHAEL J, EILEEN M	831 PONTE VEDRA BLVD	831 PONTE VEDRA BLVD, PONTE VEDRA BEACH, FL 32082
0553700000	HOLMES LOCKWOOD P SR, PATRICIA	833 PONTE VEDRA BLVD	PO BOX 740, PONTE VEDRA BEACH, FL 32004
0553600000	AMALFI LAND TRUST	835 PONTE VEDRA BLVD	818 NORTH A1A STE 104, PONTE VEDRA BEACH, FL 32082
0553500001	SOUTHSIDE BOULEVARD LAND COMPA	835A PONTE VEDRA BLVD	9540 SAN JOSE BLVD, JACKSONVILLE, FL 32257
0553500000	SCANLON HENRY R REV TRUST	837 PONTE VEDRA BLVD	837 PONTE VEDRA BLVD, PONTE VEDRA BEACH, FL 32082
0553400000	PVB RENTAL PROPERTY LAND TRUST	839 PONTE VEDRA BLVD	2400 SEMINOLE RD, ATLANTIC BEACH, FL 32233
0619800000	MAINES JAMES ALLEN	843 PONTE VEDRA BLVD	843 PONTE VEDRA BLVD, PONTE VEDRA BEACH, FL 32082
0619800000	WINDEMERE I CONDO	931 SPINNAKERS REACH DR	4200 MARSH LANDING BLVD SUITE 200, JACKSONVILLE BEACH, FL 32250
0663010770	SPINNAKERS REACH II CONDO	801 SPINNAKERS REACH DR	5455 A1A SOUTH SUITE 3, ST AUGUSTINE, FL 32080
0663010000	SPINNAKERS REACH I CONDO	701 SPINNAKERS REACH DR	5455 A1A SOUTH SUITE 3, ST AUGUSTINE, FL 32080
0663020001	SURF VILLAS CONDO	601 SUMMER PL	5455 A1A SOUTH SUITE 3, ST AUGUSTINE, FL 32080
0663000000	SAWGRASS COUNTRY CLUB INC	9795 SUMMER PL	10034 GOLF CLUB DR, PONTE VEDRA BEACH, FL 32082
0661050010	COFFEY JAMES S, LUANN TARTER ET	1 OCEAN RIDGE CT	925 OLD LIBERTY LOOP, HUSTONVILLE, KY 40437
0661050020	VEDRA VILLA LLC	2 OCEAN RIDGE CT	7234 LANCASTER PIKE SUITE 300A, HOCKESSIN, DE 19707
0661050030	STONE JOEL A, CAROLYN S	3 OCEAN RIDGE CT	3 OCEAN RIDGE CT, PONTE VEDRA BEACH, FL 32082
0661050040	D FAMILY JOINT REVOCABLE TRUS	4 OCEAN RIDGE CT	4 OCEAN RIDGE CT, PONTE VEDRA BEACH, FL 32082
0661100000	BLUE WATER PVB LAND TRUST D: 4	891 PONTE VEDRA BLVD	4 OCEAN RIDGE CT, PONTE VEDRA BEACH, FL 32082
0661200010	SIGULER GEORGE W, PAMELA M	893 PONTE VEDRA BLVD	893 PONTE VEDRA BLVD, PONTE VEDRA BEACH, FL 32082
0661300000	BATTLE WILLIAM PATRICK, ALICE A	895 PONTE VEDRA BLVD	895 PONTE VEDRA BLVD, PONTE VEDRA BEACH, FL 32082
0661400000	DELGADO GERARDO FAMILY TRUST	901 PONTE VEDRA BLVD	901 PONTE VEDRA BLVD, PONTE VEDRA BEACH, FL 32082
0661500000	SULLIVAN TOM AND GLORY LIVING	905 PONTE VEDRA BLVD	905 PONTE VEDRA BLVD, PONTE VEDRA BEACH, FL 32082
0661600010	BROWN G OWEN, CHERYL CASEY	909 PONTE VEDRA BLVD	909 PONTE VEDRA BLVD, PONTE VEDRA BEACH, FL 32082
0661700001	JANGRO JOSEPH, SUSAN M	911 PONTE VEDRA BLVD	911 PONTE VEDRA BLVD, PONTE VEDRA BEACH, FL 32082

SURVEY SITE CONTROL

FOUND NGS PUBLISHED SURVEY CONTROL

DESIGNATION	NORTHING	EASTING	ELEVATION	AGENCY	TYPE
SI GPS 1 19	2123180.20	541215.33	5.72	SIC-FL	Brass Disk
DUBE-37 (RTK BASE)	2154788.54	535416.97	10.49	USACE	Brass Disk
Q 323 1970 (RTK BASE)	2143173.83	537716.07	10.51	CGS	Brass Disk
872 0291 A	2163017.33	533814.55	9.08	NOS	SS Rod
Z 322 1970 (RTK BASE)	2104565.87	546389.14	20.14	CGS	Brass Disk

VALUES DEPICTED ARE NGS PUBLISHED

FOUND DNR "A" MONUMENTS

DESIGNATION	NORTHING	EASTING	ELEVATION	AGENCY	TYPE
78 79 A09	2151950.61	535678.76	9.70	DNR	Brass Disk
78 79 A10	2148928.08	536384.43	13.24	DNR	Brass Disk
78 79 A14	2131446.47	540118.69	8.86	DNR	Brass Disk
78 79 A16	2129330.76	541021.32	18.52	DNR	Brass Disk

VALUES DEPICTED ARE FIELD MEASURED RESULTS FOR REFERENCE ONLY

MEAN HIGH WATER LINE COORDINATE & ELEVATION VALUES

POINT	NORTHING	EASTING	ELEVATION
MHW 92	2134373.22	540327.44	1.99
MHW 93	2134159.66	540377.84	1.99
MHW 94	2133950.48	540426.39	1.99
MHW 95	2133781.60	540475.42	1.99
MHW 96	2133581.29	540519.39	1.99
MHW 97	2133376.03	540570.67	1.99
MHW 98	2133177.03	540614.69	1.99
MHW 99	2132958.40	540666.43	1.99
MHW 100	2132811.44	540700.83	1.99
MHW 101	2132587.24	540750.26	1.99
MHW 102	2132384.13	540795.70	1.99
MHW 103	2132187.72	540841.79	1.99
MHW 104	2131950.43	540899.87	1.99
MHW 105	2131736.89	540961.16	1.99
MHW 106	2131585.01	540995.01	1.99
MHW 107	2131378.17	541046.83	1.99
MHW 108	2131176.50	541095.54	1.99
MHW 109	2130957.44	541146.05	1.99
MHW 110	2130861.12	541177.54	1.99
MHW 111	2130613.94	541239.40	1.99
MHW 112	2130402.69	541294.53	1.99
MHW 113	2130200.32	541344.79	1.99
MHW 114	2129926.47	541403.30	1.99
MHW 115	2129637.33	541468.55	1.99
MHW 116	2129417.11	541522.89	1.99
MHW 117	2129215.57	541567.02	1.99
MHW 118	2128956.06	541622.60	1.99
MHW 119	2128839.23	541644.97	1.99
MHW 120	2128600.61	541696.77	1.99
MHW 121	2128392.03	541744.49	1.99
MHW 122	2128183.79	541786.67	1.99

HISTORIC BEACH MONITORING PROFILE ORIGIN

DESIGNATION	NORTHING	EASTING
R019	2133909.27	540274.65
R020	2132912.12	540485.53
R021	2131901.40	540725.95
R022	2130897.61	540919.80
R023	2129903.00	541123.61
R024	2128902.22	541401.41

Project Title: **Mean High Water Line Survey and Proposed Erosion Control Line and St Johns County R-01 to R-46.2**

Professional Hydrographers • Surveyors • Mappers
 5202 San Juan Avenue
 Jacksonville, Florida 32210
 904.384.8377

LB No. 6487
 Drawn By: RJS
 Scale: 1" = 200'
 Plot Date: 10/19/2023
 Checked By: RJS
 Fld Bk / Pg: NPVB
 ARC Project No.: 23-172

DATE BY REVISION

SHEET: 5 OF 9



LEGEND

- ▲ FOUND SURVEY CONTROL POINT
- PROFILE MONITORING RANGE ORIGIN (R MONUMENT)
- MEAN HIGH WATER LINE POINT
- ST. JOHNS COUNTY
- U.S. ARMY CORPS OF ENGINEERS
- COAST AND GEODETIC SURVEY
- NATIONAL OCEANIC SURVEY
- FLORIDA DEPARTMENT OF NATURAL RESOURCES
- PARCEL NUMBER
- MEAN HIGH WATER LINE POINT NUMBER
- SECTION-TOWNSHIP-RANGE
- SECTION-TOWNSHIP-RANGE
- POST CONSTRUCTION MEAN HIGH WATER LINE
- LANDWARD LIMITS OF FILL
- SEAWARD TOE OF FILL

PARCEL ID	OWN_NAME	PHYSICAL ADDRESS	MAILING ADDRESS
0661700002	ALLEN DANA I	913 PONTE VEDRA BLVD	913 PONTE VEDRA BLVD, PONTE VEDRA BEACH, FL 32082
0661700004	MOFFETT DAVID, LORI	917 PONTE VEDRA BLVD	917 PONTE VEDRA BLVD, PONTE VEDRA BEACH, FL 32082
0661700000	MASSEY RHYNE C	921 PONTE VEDRA BLVD	262 BLACKLAND RD NW, ATLANTA, GA 30342
0661700111	FURYK JAMES M, TABITHA A	925 PONTE VEDRA BLVD	925 PONTE VEDRA BLVD, PONTE VEDRA BEACH, FL 32082
0661700125	TEAM 79 LAND TRUST D:7-5-2018	929 PONTE VEDRA BLVD	501 RIVERSIDE AVE STE 600, JACKSONVILLE, FL 32202
0661700131	TOWE NEELY PAUL 2008 TRUST	0 PONTE VEDRA BLVD	4789 APALACHEE ST, JACKSONVILLE, FL 32210
0661700135	DARRETTA ROBERT J JR, MARY ELLE	941 PONTE VEDRA BLVD	941 PONTE VEDRA BLVD, PONTE VEDRA BEACH, FL 32082
0661700140	TULIP TRUST D: 9-17-2021	945 PONTE VEDRA BLVD	818 A1A N STE 104, PONTE VEDRA BEACH, FL 32082
0661700150	PVB HOME TRUST	955 PONTE VEDRA BLVD	1 INDEPENDENT DR, JACKSONVILLE, FL 32202
0661700165	GALORATH DANIEL DAVID, JUDY	959 PONTE VEDRA BLVD	959 PONTE VEDRA BLVD, PONTE VEDRA BEACH, FL 32082
0661700166	SWANI SANJAY, PREETI	961 PONTE VEDRA BLVD	961 PONTE VEDRA BLVD, PONTE VEDRA BEACH, FL 32082
0661700173	PAUL PAMELA	963 PONTE VEDRA BLVD	1022 PARK ST STE 202, JACKSONVILLE, FL 32204
0661700170	DANIELS GERALD DON REVOCABLE T	965 PONTE VEDRA BLVD	1228 WINDSOW HARBOR DR, JACKSONVILLE, FL 32225
0669200020	GREGG JASON A, URSULA KONSETT	967 PONTE VEDRA BLVD	967 PONTE VEDRA BLVD, PONTE VEDRA BEACH, FL 32082
0669200010	PALMER LESLIE F LIVING TRUST	969 PONTE VEDRA BLVD	969 PONTE VEDRA BLVD, PONTE VEDRA BEACH, FL 32082
0669200040	CARUSILLO MICHAEL J, SUZANNE	971 PONTE VEDRA BLVD	971 PONTE VEDRA BLVD, PONTE VEDRA BEACH, FL 32082
0669810000	SOUTHSIDE REV TRUST	973 PONTE VEDRA BLVD	425 86TH AVE NE, MEDINA, WA 98039
0669800000	DUKE JOSEPH Z ET AL	981 PONTE VEDRA BLVD	830 A1A N SUITE 13 #391, PONTE VEDRA BEACH, FL 32082
0669950110	W.B.A. BEACH ACCESS LLC	0 PONTE VEDRA BLVD	PO BOX 2821, PONTE VEDRA BEACH, FL 32004
0669950100	WBA BEACH ACCESS LLC	0 PONTE VEDRA BLVD	976A PONTE VEDRA BLVD, PONTE VEDRA BEACH, FL 32082
0669900000	CRAWFORD FELIX A, ANTONIA K	989 PONTE VEDRA BLVD	989 PONTE VEDRA BLVD, PONTE VEDRA BEACH, FL 32082
0669950000	MILLEN MATTHEW G, PATRICA	993 PONTE VEDRA BLVD	862 DURHAM RD, DURHAM, PA 18039
0669950020	SCHIAVONE BEACH LLC	1001 PONTE VEDRA BLVD	3751 ORTEGA BLVD, JACKSONVILLE, FL 32210
0670550000	PV BEACH LLC	1025 PONTE VEDRA BLVD	1025 PONTE VEDRA BLVD, PONTE VEDRA BEACH, FL 32082
0670000000	PARYANI SHYAM B, SHARON G	1029 PONTE VEDRA BLVD	1029 PONTE VEDRA BLVD, PONTE VEDRA BEACH, FL 32082
0670200000	DAVIES SHEILA LEE, JONATHAN	1033 PONTE VEDRA BLVD	799 CLIFTON ROAD NE, ATLANTA, GA 30307
0670200010	EPIPHANY PROP LLC	1037 PONTE VEDRA BLVD	1028 PONTE VEDRA BLVD, PONTE VEDRA BEACH, FL 32082
0670500000	LEMON PROPERTY 6 LLC	1039 PONTE VEDRA BLVD	1039 PONTE VEDRA BLVD, PONTE VEDRA BEACH, FL 32082
0670600010	KANTOR JONATHAN, NICHOLE	1041 PONTE VEDRA BLVD	1041 PONTE VEDRA BLVD, PONTE VEDRA BEACH, FL 32082
0684900000	CONDON NANCY KABLACH REVOCABL	1049 PONTE VEDRA BLVD	1049 PONTE VEDRA BLVD, PONTE VEDRA BEACH, FL 32082
0685200040	COOK DANIEL P	1051 PONTE VEDRA BLVD	1051 PONTE VEDRA BLVD, PONTE VEDRA BEACH, FL 32082
0685200050	1055 PONTE VEDRA BOULEVARD LAN	1055 PONTE VEDRA BLVD	PO BOX 3198, PONTE VEDRA BEACH, FL 32004
0685200000	1059 PONTE VEDRA LLC	1059 PONTE VEDRA BLVD	4046 ALHAMBRA DR W, JACKSONVILLE, FL 32207
0685300010	AZEVEDO FAMILY REV FAMILY TRUS	1063 PONTE VEDRA BLVD	1063 PONTE VEDRA BLVD, PONTE VEDRA BEACH, FL 32082
0685300030	PHILLIPS H SCOTT, SARAH J	1065 PONTE VEDRA BLVD	1065 PONTE VEDRA BLVD, PONTE VEDRA BEACH, FL 32082
0685300090	LIGGETT SCOTT	1071 PONTE VEDRA BLVD	1071 PONTE VEDRA BLVD, PONTE VEDRA BEACH, FL 32082

SURVEY SITE CONTROL

FOUND NGS PUBLISHED SURVEY CONTROL

DESIGNATION	NORTHING	EASTING	ELEVATION	AGENCY	TYPE
SJ_GPS_119	2123180.20	541215.33	5.72	SJC-FL	Brass Disk
DUBE-37 (RTK BASE)	2154788.54	535416.97	10.49	USACE	Brass Disk
Q 323 1970 (RTK BASE)	2143173.83	537716.07	10.51	CGS	Brass Disk
872 0291 A	2163017.33	533814.55	9.08	NOS	SS Rod
Z 322 1970 (RTK BASE)	2104565.87	546389.14	20.14	CGS	Brass Disk

VALUES DEPICTED ARE FIELD MEASURED RESULTS FOR REFERENCE ONLY

VALUES DEPICTED ARE NGS PUBLISHED

FOUND DNR "A" MONUMENTS

DESIGNATION	NORTHING	EASTING	ELEVATION	AGENCY	TYPE
78 79 A09	2151950.61	535678.76	9.70	DNR	Brass Disk
78 79 A10	2148928.08	536384.43	13.24	DNR	Brass Disk
78 79 A14	2131446.47	540118.69	8.86	DNR	Brass Disk
78 79 A16	2129330.76	541021.32	18.52	DNR	Brass Disk

MEAN HIGH WATER LINE COORDINATE & ELEVATION VALUES

POINT	NORTHING	EASTING	ELEVATION
MHW 123	2127933.63	541838.56	1.99
MHW 124	2127797.70	541869.45	1.99
MHW 125	2127572.26	541915.40	1.99
MHW 126	2127355.09	541957.54	1.99
MHW 127	2127150.49	542005.09	1.99
MHW 128	2126927.28	542050.35	1.99
MHW 129	2126767.30	542085.37	1.99
MHW 130	2126550.05	542131.30	1.99
MHW 131	2126350.92	542174.82	1.99
MHW 132	2126153.04	542218.38	1.99
MHW 133	2125922.74	542264.89	1.99
MHW 134	2125745.95	542303.38	1.99
MHW 135	2125544.33	542349.19	1.99
MHW 136	2125345.66	542392.58	1.99
MHW 137	2125145.60	542440.11	1.99
MHW 138	2124898.55	542499.74	1.99
MHW 139	2124672.76	542554.15	1.99
MHW 140	2124458.17	542601.25	1.99
MHW 141	2124258.67	542645.87	1.99
MHW 142	2124080.63	542686.29	1.99
MHW 143	2123888.48	542728.29	1.99
MHW 144	2123692.59	542770.97	1.99
MHW 145	2123492.28	542815.37	1.99
MHW 146	2123298.46	542867.16	1.99
MHW 147	2123101.77	542908.67	1.99
MHW 149	2122906.26	542953.65	1.99
MHW 150	2122673.65	543010.16	1.91
MHW 151	2122477.08	543050.82	1.91
MHW 152	2122281.27	543093.03	1.91
MHW 153	2122085.33	543137.50	1.91
MHW 154	2121892.25	543187.71	1.91
MHW 155	2121640.07	543257.04	1.91

HISTORIC BEACH MONITORING PROFILE ORIGIN

DESIGNATION	NORTHING	EASTING
R025	2127882.75	541641.73
R026	2126885.13	541884.33
R027	2125892.03	542136.41
R028	2124851.16	542327.46
R029	2123877.36	542584.58
R030	2122850.88	542759.15
R031	2121845.20	543021.86

Project Title: **Mean High Water Line Survey and Proposed Erosion Control Line St Johns County R-01 to R-46.2**

Professional Hydrographers • Surveyors • Mappers
5202 San Juan Avenue
Jacksonville, Florida 32210
904.384.8377

LB No. 6487
Drawn By: RJS
Scale: 1" = 200'
Plot Date: 10/19/2023
Checked By: RJS
Fld Bk / Pg: NPVB
ARC Project No.: 23-172

SHEET: 6 OF 9



LEGEND

- ▲ FOUND SURVEY CONTROL POINT
- PROFILE MONITORING RANGE ORIGIN (R MONUMENT)
- MEAN HIGH WATER LINE POINT
- SJC - FL ST. JOHNS COUNTY
- USACE U.S. ARMY CORPS OF ENGINEERS
- CGS COAST AND GEODETIC SURVEY
- NOS NATIONAL OCEANIC SURVEY
- DNR FLORIDA DEPARTMENT OF NATURAL RESOURCES
- 000000000 PARCEL NUMBER
- MEAN HIGH WATER LINE POINT NUMBER
- XXXXXX-XX SECTION-TOWNSHIP-RANGE
- SECTION-TOWNSHIP-RANGE
- POST CONSTRUCTION MEAN HIGH WATER LINE
- LANDWARD LIMITS OF FILL
- SEAWARD TOE OF FILL

PARCEL ID	OWN_NAME	PHYSICAL ADDRESS	MAILING ADDRESS
0685300100	DAVIS WILLIAM LAURECE,LEIGH	1075 PONTE VEDRA BLVD	1075 PONTE VEDRA BLVD, PONTE VEDRA BEACH, FL 32082
0685300000	SHIELDS JOHN H II,PATRICIA P	1077 PONTE VEDRA BLVD	1077 PONTE VEDRA BLVD, PONTE VEDRA BEACH, FL 32082
0670711010	HARBISON EARLE H JR REVOCABLE	1083 PONTE VEDRA BLVD	1083 PONTE VEDRA BLVD, PONTE VEDRA BEACH, FL 32082
0670711020	WALLS CYNTHIA B TRUST D:02-04-	1085 PONTE VEDRA BLVD	1085 PONTE VEDRA BLVD UNIT A, PONTE VEDRA BEACH, FL 32082
0670711030	GULANI ARUN,SUPARNA	1087 PONTE VEDRA BLVD	1087 PONTE VEDRA BLVD, PONTE VEDRA BEACH, FL 32082
0670711040	THOMASSON DANN M,JANET BASS	1089 PONTE VEDRA BLVD	1089 PONTE VEDRA BLVD, PONTE VEDRA BEACH, FL 32082
0670711050	MANN TIMOTHY JR,JERRI L	1091 PONTE VEDRA BLVD	1091 PONTE VEDRA BLVD, PONTE VEDRA BEACH, FL 32082
0670711100	PVB FCPT JOINT REV TRUST D: 5-	1101 PONTE VEDRA BLVD	8265 BAYBERRY RD, JACKSONVILLE, FL 32256
0670711120	ABBASSI ABDI	1105 PONTE VEDRA BLVD	1105 PONTE VEDRA BLVD, PONTE VEDRA BEACH, FL 32082
0670711140	NAULT JAMES P	1109 PONTE VEDRA BLVD	1109 PONTE VEDRA BLVD, PONTE VEDRA BEACH, FL 32082
0670712010	THE PLANTATION AT PONTE VEDRA		101 PLANTATION DR, PONTE VEDRA BEACH, FL 32082
0670712020	THE PLANTATION AT PONTE VEDRA		101 PLANTATION DR, PONTE VEDRA BEACH, FL 32082
0670712030	THE PLANTATION AT PONTE VEDRA		101 PLANTATION DR, PONTE VEDRA BEACH, FL 32082
0670712040	MC LEOD IAM JAMES WINWARD ET A	1117 PONTE VEDRA BLVD	1117 PONTE VEDRA BLVD, PONTE VEDRA BEACH, FL 32082
0670712050	LIOTTA DENNIS C,HELENE M	1119 PONTE VEDRA BLVD	1119 PONTE VEDRA BLVD, PONTE VEDRA BEACH, FL 32082
0670712060	KIBLER FRANK MCCLINTIC JR TRUS	1121 PONTE VEDRA BLVD	1121 PONTE VEDRA BLVD, PONTE VEDRA BEACH, FL 32082
0670712070	LIOTTA DENNIS C,HELENE M	1123 PONTE VEDRA BLVD	1119 PONTE VEDRA BLVD, PONTE VEDRA BEACH, FL 32082
0670712080	SHAPIRO JOEL R,SYLVA	0 PONTE VEDRA BLVD	1765 BEACH AVE, ATLANTIC BEACH, FL 32233
0670712090	NORRIS JOHN D,COLEEN A	1127 PONTE VEDRA BLVD	156 SEA HAMMOCK WAY, PONTE VEDRA BEACH, FL 32082
0670700020	MILAZZO JASON T,JENNIFER L	1129 PONTE VEDRA BLVD	1129 PONTE VEDRA BLVD, PONTE VEDRA BEACH, FL 32082
0596800000	MAIDA JERRY W FAMILY TRUST	1131 PONTE VEDRA BLVD	1131 PONTE VEDRA BLVD, PONTE VEDRA BEACH, FL 32082
0596900020	PVB INVESTMENTS LLC	1133 PONTE VEDRA BLVD	8280 MONTGOMERY RD, STE 102,CINCINNATI,OH,45236
0597000000	WANDERON ANTON,CHRISTINE	1135 PONTE VEDRA BLVD	1135 PONTE VEDRA BLVD, PONTE VEDRA BEACH, FL 32082
0597100000	TAYLOR DONALD D	1137 PONTE VEDRA BLVD	137 BRISTOL PL, PONTE VEDRA BEACH, FL 32082
0597200000	RESL LTD	1141 PONTE VEDRA BLVD	801 BRICKELL AVE STE 500, MIAMI, FL 33131
0597300000	CARLOS FAMILY REAL ESTATE HOLD	1143 PONTE VEDRA BLVD	4118 NORTHSIDE DR, ATLANTA, GA 30342
0597300070	CARLOS FAMILY REAL ESTATE HOLD	1145 PONTE VEDRA BLVD	4118 NORTHSIDE DR, ATLANTA, GA 30342
0597400000	BRINDLEY DON M TRUST	1155 PONTE VEDRA BLVD	1155 PONTE VEDRA BLVD, PONTE VEDRA BEACH, FL 32082
0597400010	AZTEC VIKINGS CHILDREN IRREVOC	1157 PONTE VEDRA BLVD	8314 KENTLAND DR, FRISCO, TX 75034
0597400090	CAPPUCCILLI MARION,CHRIS	1159 PONTE VEDRA BLVD	1159 PONTE VEDRA BLVD, PONTE VEDRA BEACH, FL 32082
0597500000	MC AULIFFE KEVIN M ETAL	1161 PONTE VEDRA BLVD	1161 PONTE VEDRA BLVD, PONTE VEDRA BEACH, FL 32082
0597600000	AGUIRRE FERNANDO,CITLALI	1165 PONTE VEDRA BLVD	1226 SALT CREEK ISLAND DR, PONTE VEDRA BEACH, FL 32082
0597700000	HUTCHINS FAMILY TRUST	1169 PONTE VEDRA BLVD	1169 PONTE VEDRA BLVD, PONTE VEDRA BEACH, FL 32082
0597800000	MCCURDY DAVID M FAMILY RES TRU	1173 PONTE VEDRA BLVD	1173 PONTE VEDRA BLVD, PONTE VEDRA BEACH, FL 32082

SURVEY SITE CONTROL

FOUND NGS PUBLISHED SURVEY CONTROL

NAD 83/11 SPC 0901 NAVD88 US SURVEY FEET

DESIGNATION	NORTHING	EASTING	ELEVATION	AGENCY	TYPE
SJ GPS 1 19	2123180.20	541215.33	5.72	SJC-FL	Brass Disk
DUBE-37 (RTK BASE)	2154788.54	535416.97	10.49	USACE	Brass Disk
Q 323 1970 (RTK BASE)	2143173.83	537716.07	10.51	CGS	Brass Disk
872 0291 A	2163017.33	533814.55	9.08	NOS	SS Rod
Z 322 1970 (RTK BASE)	2104565.87	546389.14	20.14	CGS	Brass Disk

VALUES DEPICTED ARE NGS PUBLISHED

FOUND DNR "A" MONUMENTS

NAD 83/11 SPC 0901 NAVD88 US SURVEY FEET

DESIGNATION	NORTHING	EASTING	ELEVATION	AGENCY	TYPE
R032	2120812.53	543276.59			
R033	2119814.42	543488.74			
R034	2118793.79	543674.18			
R035	2117829.44	543889.44			
R036	2116792.29	544107.28			
R037	2115757.71	544337.84			

VALUES DEPICTED ARE FIELD MEASURED RESULTS FOR REFERENCE ONLY

MEAN HIGH WATER LINE COORDINATE & ELEVATION VALUES

POINT	NORTHING	EASTING	ELEVATION
MHW 156	2121446.23	543306.16	1.91
MHW 157	2121253.32	543358.95	1.91
MHW 158	2121057.46	543400.93	1.91
MHW 159	2120861.98	543449.19	1.91
MHW 160	2120647.48	543497.66	1.91
MHW 161	2120453.05	543539.41	1.91
MHW 162	2120257.26	543581.20	1.91
MHW 163	2120060.03	543628.68	1.91
MHW 164	2119864.49	543673.32	1.91
MHW 165	2119636.36	543721.45	1.91
MHW 166	2119441.22	543761.08	1.91
MHW 167	2119245.19	543797.28	1.91
MHW 168	2119047.71	543842.68	1.91
MHW 169	2118851.54	543884.89	1.91
MHW 170	2118607.89	543930.42	1.91
MHW 171	2118313.99	543996.41	1.91
MHW 172	2118118.30	544035.31	1.91
MHW 173	2117920.80	544071.73	1.91
MHW 174	2117724.59	544110.53	1.91
MHW 175	2117528.74	544148.74	1.91
MHW 176	2117332.13	544185.62	1.91
MHW 177	2117135.16	544225.41	1.91
MHW 178	2116938.00	544263.34	1.91
MHW 179	2116742.18	544302.93	1.91
MHW 180	2116545.08	544341.54	1.91
MHW 181	2116348.79	544383.37	1.91
MHW 182	2116156.05	544428.23	1.91
MHW 183	2115958.94	544471.07	1.91
MHW 184	2115802.91	544502.05	1.91
MHW 185	2115629.86	544537.01	1.91
MHW 186	2115378.39	544601.81	1.91
MHW 187	2115182.54	544641.02	1.91

HISTORIC BEACH MONITORING PROFILE ORIGIN

DESIGNATION	NORTHING	EASTING
R032	2120812.53	543276.59
R033	2119814.42	543488.74
R034	2118793.79	543674.18
R035	2117829.44	543889.44
R036	2116792.29	544107.28
R037	2115757.71	544337.84

Project Title: **Mean High Water Line Survey and Proposed Erosion Control Line St Johns County R-01 to R-46.2**

Professional Hydrographers • Surveyors • Mappers
 5202 San Juan Avenue
 Jacksonville, Florida 32210
 904.384.8377

LB No. 6487
 Drawn By: RJS
 Scale: 1" = 200'
 Plot Date: 10/19/2023
 Checked By: RJS
 Fld Bk / Pg: NPVB
 ARC Project No.: 23-172

DATE BY REVISION

SHEET: 7 OF 9



PARCEL ID	OWN_NAME	PHYSICAL ADDRESS	MAILING ADDRESS
0597900000	SONTAG FREDERICK B REVOCABLE T	1185 PONTE VEDRA BLVD	1185 PONTE VEDRA BLVD, PONTE VEDRA BEACH, FL 32082
0598200000	HART KEVIN JOHN, PEGGY CHALMERS	1189 PONTE VEDRA BLVD	1189 PONTE VEDRA BLVD, PONTE VEDRA BEACH, FL 32082
0598300000	TRECENTI WIVERTSON C	1193 PONTE VEDRA BLVD	1193 PONTE VEDRA BLVD, PONTE VEDRA BEACH, FL 32082
0598300200	PATTERSON JOHN, PHYLLIS	1197 PONTE VEDRA BLVD	1197 PONTE VEDRA BLVD, PONTE VEDRA BEACH, FL 32082
0598300210	EAGLESTAR BEACH HOUSE LLC	1201 PONTE VEDRA BLVD	9995 GATE PKWY #400, JACKSONVILLE, FL 32246
0598300215	TRESCA JUDITH T TRUST D-7-18-0	1203 PONTE VEDRA BLVD	PO BOX 756, PONTE VEDRA BEACH, FL 32004
0598300220	TURNER ANNA EKKEBUS	1205 PONTE VEDRA BLVD	1205 PONTE VEDRA BLVD, PONTE VEDRA BEACH, FL 32082
0598300230	ELTRICH MARTIN C III, MISTIE AN	1213 PONTE VEDRA BLVD	1213 PONTE VEDRA BLVD, PONTE VEDRA BEACH, FL 32082
0598300240	HATHCOCK JUDITH REVOCABLE TRUS	1217 PONTE VEDRA BLVD	1217 PONTE VEDRA BLVD, PONTE VEDRA BEACH, FL 32082
0596710000	OLD PONTE VEDRA BEACH CONDO	125 SEA HAMMOCK WAY	4200 MARSH LANDING BLVD SUITE 200, JACKSONVILLE BEACH, FL 32250
0596700010	OLD PONTE VEDRA BCH CABANA CLB	125 SEA HAMMOCK WAY	P O BOX 1159, PONTE VEDRA BEACH, FL 32004
0596710000	OLD PONTE VEDRA BEACH CONDO	125 SEA HAMMOCK WAY	4200 MARSH LANDING BLVD SUITE 200, JACKSONVILLE BEACH, FL 32250
0598400000	WILDERMUTH DANIEL LLOYD, CAROL	1263 PONTE VEDRA BLVD	1263 PONTE VEDRA BLVD, PONTE VEDRA BEACH, FL 32082
0598500000	ZIEGLER WILLIAM T, JACQUELINE	1267 PONTE VEDRA BLVD	1267 PONTE VEDRA BLVD, PONTE VEDRA BEACH, FL 32082
0598500030	MOSLEY MARGARET H	1271 PONTE VEDRA BLVD	PO BOX 742, SHERIDON, AR 72150
0598500040	SINGH ARDINA SETH DECLARATION	1275 PONTE VEDRA BLVD	1275 PONTE VEDRA BLVD, PONTE VEDRA BEACH, FL 32082
0598500050	ANGELO MARC, BETH	1283 PONTE VEDRA BLVD	1283 PONTE VEDRA BLVD, PONTE VEDRA BEACH, FL 32082
0598500060	KENNEDY JOHN, NANCY	1287 PONTE VEDRA BLVD	1287 PONTE VEDRA BLVD, PONTE VEDRA BEACH, FL 32082
0598500071	ELIASSON FREDRIK, DANIELLE JOIN	1291 PONTE VEDRA BLVD	1291 PONTE VEDRA BLVD, PONTE VEDRA BEACH, FL 32082
0598500070	ROBERTS CHRISTOPHER, MAUREEN	1289 PONTE VEDRA BLVD	53 RINALDO WAY, PONTE VEDRA, FL 32081
0598500080	JOHNSTON CHARLES, SANDRA	1299 PONTE VEDRA BLVD	1299 PONTE VEDRA BLVD, PONTE VEDRA BEACH, FL 32082
0598500090	MOODY MARIJANNE CHRISTINA ET AL	1305 PONTE VEDRA BLVD	1305 PONTE VEDRA BLVD, PONTE VEDRA BEACH, FL 32082
0674700000	FREDEKING ROBERT R II, DEBORAH	1313 PONTE VEDRA BLVD	1313 PONTE VEDRA BLVD, PONTE VEDRA BEACH, FL 32082

MEAN HIGH WATER LINE COORDINATE & ELEVATION VALUES			
POINT	NORTHING	EASTING	ELEVATION
MHW 188	2114987.45	544684.77	1.91
MHW 189	2114791.15	544725.33	1.91
MHW 190	2114596.02	544769.41	1.91
MHW 191	2114400.36	544814.23	1.91
MHW 192	2114204.40	544856.01	1.91
MHW 193	2114007.41	544893.90	1.91
MHW 194	2113811.36	544935.05	1.91
MHW 195	2113615.71	544979.33	1.91
MHW 196	2113419.56	545021.96	1.91
MHW 197	2113224.05	545065.94	1.91
MHW 198	2113030.06	545111.89	1.91
MHW 199	2112834.30	545154.60	1.91
MHW 200	2112638.72	545198.14	1.91
MHW 201	2112444.40	545244.17	1.91
MHW 202	2112250.77	545291.12	1.91
MHW 203	2112056.33	545335.33	1.91
MHW 204	2111860.93	545378.16	1.91
MHW 205	2111664.77	545418.71	1.91
MHW 206	2111468.42	545460.13	1.91
MHW 207	2111272.89	545505.28	1.91
MHW 208	2111076.93	545544.71	1.91
MHW 209	2110880.46	545582.99	1.91
MHW 210	2110686.61	545631.92	1.91
MHW 211	2110491.47	545676.05	1.91
MHW 212	2110294.63	545713.47	1.91
MHW 213	2110097.19	545748.61	1.91
MHW 214	2109900.13	545786.25	1.91
MHW 215	2109703.75	545827.13	1.91
MHW 216	2109506.72	545864.17	1.91
MHW 217	2109310.34	545904.67	1.91
MHW 218	2109114.11	545945.66	1.91
MHW 219	2108918.11	545986.38	1.91
MHW 220	2108722.11	546024.88	1.91

SURVEY SITE CONTROL						
FOUND NGS PUBLISHED SURVEY CONTROL						
NAD 83/11 SPC 0901 NAVD88 US SURVEY FEET						
DESIGNATION	NORTHING	EASTING	ELEVATION	AGENCY	TYPE	
SJ_GPS_119	2123180.20	541215.33	5.72	SJC-FL	Brass Disk	
DUBE-37 (RTK BASE)	2154788.54	535416.97	10.49	USACE	Brass Disk	
Q 323 1970 (RTK BASE)	2143173.83	537716.07	10.51	CGS	Brass Disk	
872 0291 A	2163017.33	533814.55	9.08	NOS	SS Rod	
Z 322 1970 (RTK BASE)	2104565.87	546389.14	20.14	CGS	Brass Disk	
VALUES DEPICTED ARE NGS PUBLISHED						
FOUND DNR "A" MONUMENTS						
NAD 83/11 SPC 0901 NAVD88 US SURVEY FEET						
DESIGNATION	NORTHING	EASTING	ELEVATION	AGENCY	TYPE	
78 79 A09	2151950.61	535678.76	9.70	DNR	Brass Disk	
78 79 A10	2148928.08	536384.43	13.24	DNR	Brass Disk	
78 79 A14	2131446.47	540118.69	8.86	DNR	Brass Disk	
78 79 A16	2129330.76	541021.32	18.52	DNR	Brass Disk	
VALUES DEPICTED ARE FIELD MEASURED RESULTS FOR REFERENCE ONLY						

HISTORIC BEACH MONITORING PROFILE ORIGIN		
DESIGNATION	NORTHING	EASTING
R038	2114743.03	544549.10
R039	2113701.51	544776.16
T040	2112690.55	544995.84
T041	2111654.74	545209.14
R042	2110630.93	545411.46
R043	2109659.29	545585.97

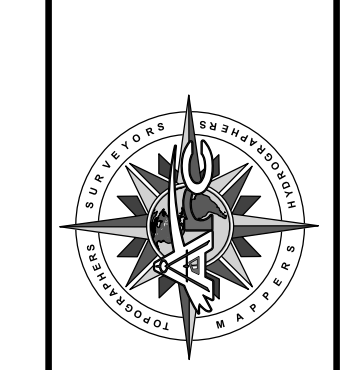
LEGEND	
▲	FOUND SURVEY CONTROL POINT
□	PROFILE MONITORING RANGE ORIGIN (R MONUMENT)
●	MEAN HIGH WATER LINE POINT
SJC - FL	ST. JOHNS COUNTY
USACE	U.S. ARMY CORPS OF ENGINEERS
CGS	COAST AND GEODETIC SURVEY
NOS	NATIONAL OCEANIC SURVEY
DNR	FLORIDA DEPARTMENT OF NATURAL RESOURCES
0598100000	PARCEL NUMBER
1111111111	MEAN HIGH WATER LINE POINT NUMBER
XXXX-XXX	SECTION-TOWNSHIP-RANGE
---	SECTION-TOWNSHIP-RANGE
---	POST CONSTRUCTION MEAN HIGH WATER LINE
---	LANDWARD LIMITS OF FILL
---	SEAWARD TOE OF FILL

Refer to Sheet No. 1 for Surveyors Notes.

DATE	BY	REVISION

Project Title:
**Mean High Water Line Survey
 and Proposed Erosion Control Line
 St Johns County R-01 to R-46.2**

Arc Surveying & Mapping, Inc.
 Professional Hydrographers • Surveyors • Mappers
 5202 San Juan Avenue
 Jacksonville, Florida 32210
 904.384.8377



LB No. 6487
 Drawn By: RJS
 Scale: 1" = 200'
 Plot Date: 10/19/2023
 Checked By: RJS
 Flt Bk / Pg: NPVB
 ARC Project No.: 23-172
 SHEET: 8 OF 9



PARCEL ID	OWN_NAME	PHYSICAL ADDRESS	MAILING ADDRESS
0674850000	PEDUTO LIVING TRUST D: 4-22-20	1317 PONTE VEDRA BLVD	1317 PONTE VEDRA BLVD, PONTE VEDRA BEACH, FL 32082
0675000010	LEWIS MICHELLE HUCKABY	1321 PONTE VEDRA BLVD	1321 PONTE VEDRA BLVD, PONTE VEDRA BEACH, FL 32082
0675050030	EKKEBUS EDWARD,SUSAN H	0 PONTE VEDRA BLVD	603 COUNTRY CLUB RD, LA GRANGE, GA 30240
0675100030	MYLETT EDWARD,KRISTIANNA	1329 PONTE VEDRA BLVD	4195 CHINO HILLS PKWY ES13, CHINO HILLS, CA 91709
0675100040	TUCKER DAVID,HELEN	1331 PONTE VEDRA BLVD	8032 PEBBLE CREEK LN W, PONTE VEDRA BEACH, FL 32082
0675100050	BRAGAN PETER D JR,NANCY A	1333 PONTE VEDRA BLVD	1333 PONTE VEDRA BLVD, PONTE VEDRA BEACH, FL 32082
0675450000	BALSYS RAYMOND	1337 PONTE VEDRA BLVD	1337 PONTE VEDRA BLVD, PONTE VEDRA BEACH, FL 32082
0598510010	EPPERSON STUART W	1407 PONTE VEDRA BLVD	3780 WILL SCARLET RD, WINSTON-SALEM, NC 27104
0598510020	CHEEK JAMES H III REV TRUST D:	1411 PONTE VEDRA BLVD	1411 PONTE VEDRA BLVD, PONTE VEDRA BEACH, FL 32082
0598510030	ROLLER DONALD E,BETTY J REVOCA	1421 PONTE VEDRA BLVD	1421 PONTE VEDRA BLVD, PONTE VEDRA BEACH, FL 32082
0598510040	BATEH JANAN	1431 PONTE VEDRA BLVD	PO BOX 2355, PONTE VEDRA BEACH, FL 32004
0598510050	MCPHERSON JOHN KENNETH,SARAH D	1433 PONTE VEDRA BLVD	1433 PONTE VEDRA BLVD, PONTE VEDRA BEACH, FL 32082
0598510060	MAGIDOW JOANN	1445 PONTE VEDRA BLVD	1445 PONTE VEDRA BLVD, PONTE VEDRA BEACH, FL 32082
0598510070	MONACO SARAH W	1461 PONTE VEDRA BLVD	1461 PONTE VEDRA BLVD, PONTE VEDRA BEACH, FL 32082
0675480000	TIIT/FWCC - GUANA RIVER WILDLIFE AREA	505 GUANA RIVER RD.	3900 COMMONWEALTH BLVD, TALLAHASSEE, FL 32399-6575

LEGEND

- ▲ FOUND SURVEY CONTROL POINT
- PROFILE MONITORING RANGE ORIGIN (R MONUMENT)
- MEAN HIGH WATER LINE POINT
- ST JOHN'S COUNTY
- USACE U.S. ARMY CORPS OF ENGINEERS
- CGS COAST AND GEODETIC SURVEY
- NOS NATIONAL OCEANIC SURVEY
- DNR FLORIDA DEPARTMENT OF NATURAL RESOURCES
- 0000100000 PARCEL NUMBER
- MEAN HIGH WATER LINE POINT NUMBER
- SECTION-TOWNSHIP-RANGE
- SECTION-TOWNSHIP-RANGE
- POST CONSTRUCTION MEAN HIGH WATER LINE
- LANDWARD LIMITS OF FILL
- SEAWARD TOE OF FILL

MEAN HIGH WATER LINE COORDINATE & ELEVATION VALUES

POINT	NORTHING	EASTING	ELEVATION
MHW 221	2108526.26	546064.40	1.91
MHW 222	2108330.05	546106.69	1.91
MHW 223	2108133.09	546146.52	1.91
MHW 224	2107936.29	546184.98	1.91
MHW 225	2107742.04	546230.59	1.91
MHW 226	2107545.31	546269.55	1.91
MHW 227	2107348.43	546309.08	1.91
MHW 228	2107151.22	546346.26	1.91
MHW 229	2106954.17	546382.48	1.91
MHW 230	2106758.18	546423.16	1.91
MHW 231	2106563.15	546464.97	1.91
MHW 232	2106366.89	546505.62	1.91
MHW 233	2106169.81	546545.79	1.91
MHW 234	2105973.31	546583.71	1.91
MHW 235	2105777.38	546620.76	1.91
MHW 236	2105580.32	546655.73	1.91
MHW 237	2105382.72	546690.06	1.91
MHW 238	2105185.94	546730.51	1.91
MHW 239	2104990.52	546775.39	1.91
MHW 240	2104795.50	546816.70	1.91
MHW 241	2104599.03	546857.36	1.91
MHW 242	2104404.07	546896.41	1.91
MHW 243	2104207.69	546936.48	1.91

SURVEY SITE CONTROL

FOUND NGS PUBLISHED SURVEY CONTROL

DESIGNATION	NAD 83/11	SPC 0901	NAVD88	US SURVEY FEET	AGENCY	TYPE
SJ_GPS_1_19	2123180.20		541215.33	5.72	SIC-FL	Brass Disk
DUBE-37 (RTK BASE)	2154788.54		535416.97	10.49	USACE	Brass Disk
Q 323 1970 (RTK BASE)	2143173.83		537716.07	10.51	CGS	Brass Disk
872 0291 A	2163017.33		533814.55	9.08	NOS	SS Rod
Z 322 1970 (RTK BASE)	2104565.87		546389.14	20.14	CGS	Brass Disk

VALUES DEPICTED ARE NGS PUBLISHED

FOUND DNR "A" MONUMENTS

DESIGNATION	NAD 83/11	SPC 0901	NAVD88	US SURVEY FEET	AGENCY	TYPE
78 79 A09	2151950.61		535678.76	9.70	DNR	Brass Disk
78 79 A10	2148928.08		536384.43	13.24	DNR	Brass Disk
78 79 A14	2131446.47		540118.69	8.86	DNR	Brass Disk
78 79 A16	2129330.76		541021.32	18.52	DNR	Brass Disk

VALUES DEPICTED ARE FIELD MEASURED RESULTS FOR REFERENCE ONLY

HISTORIC BEACH MONITORING PROFILE ORIGIN

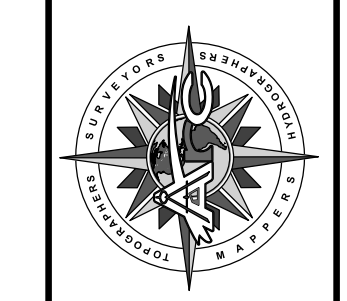
DESIGNATION	NORTHING	EASTING
R044	2108580.38	545824.73
R045	2107566.65	546032.19
R046	2106556.74	546225.08
T047	2105552.96	546447.62
T048	2104547.93	546665.00

Refer to Sheet No. 1 for Surveyors Notes.

DATE	BY	REVISION

Project Title:
Mean High Water Line Survey and Proposed Erosion Control Line and St Johns County R-01 to R-46.2

Arc Surveying & Mapping, Inc.
 Professional Hydrographers • Surveyors • Mappers
 5202 San Juan Avenue
 Jacksonville, Florida 32210
 904.384.8377



LB No. 6487
 Drawn By: RJS
 Scale: 1" = 200'
 Plot Date: 10/19/2023
 Checked By: RJS
 Flt Bk / Pg: NPVB
 ARC Project No.: 23-172
 SHEET: 9 OF 9