



FEMA Dune Enhancement Project

South Ponte Vedra Beach Pre-Construction
sjcfl.us



AGENDA

Background

Project Details

Summary

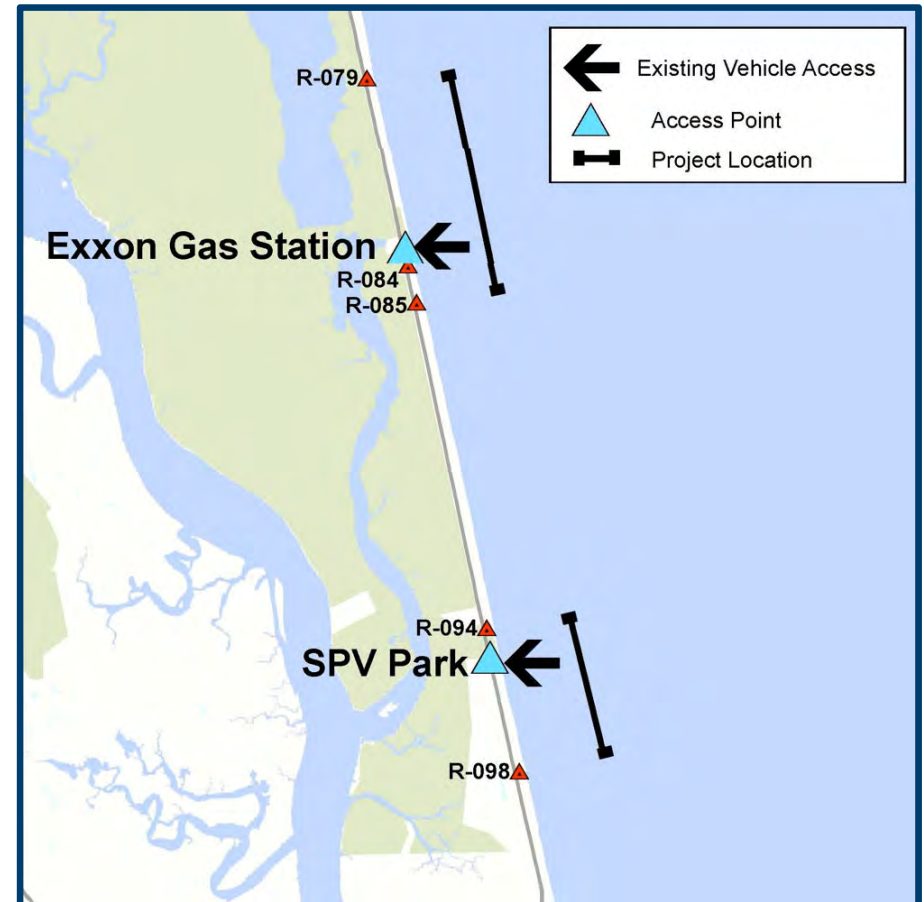
Contact Info

Questions



Background

- Funded by FEMA & State through Hurricanes Ian and Nicole funding.
- The St. Johns County Board of County Commissioners voted to approve the project on September 19, 2023.
- Hired Olsen Associates as Engineer for the project



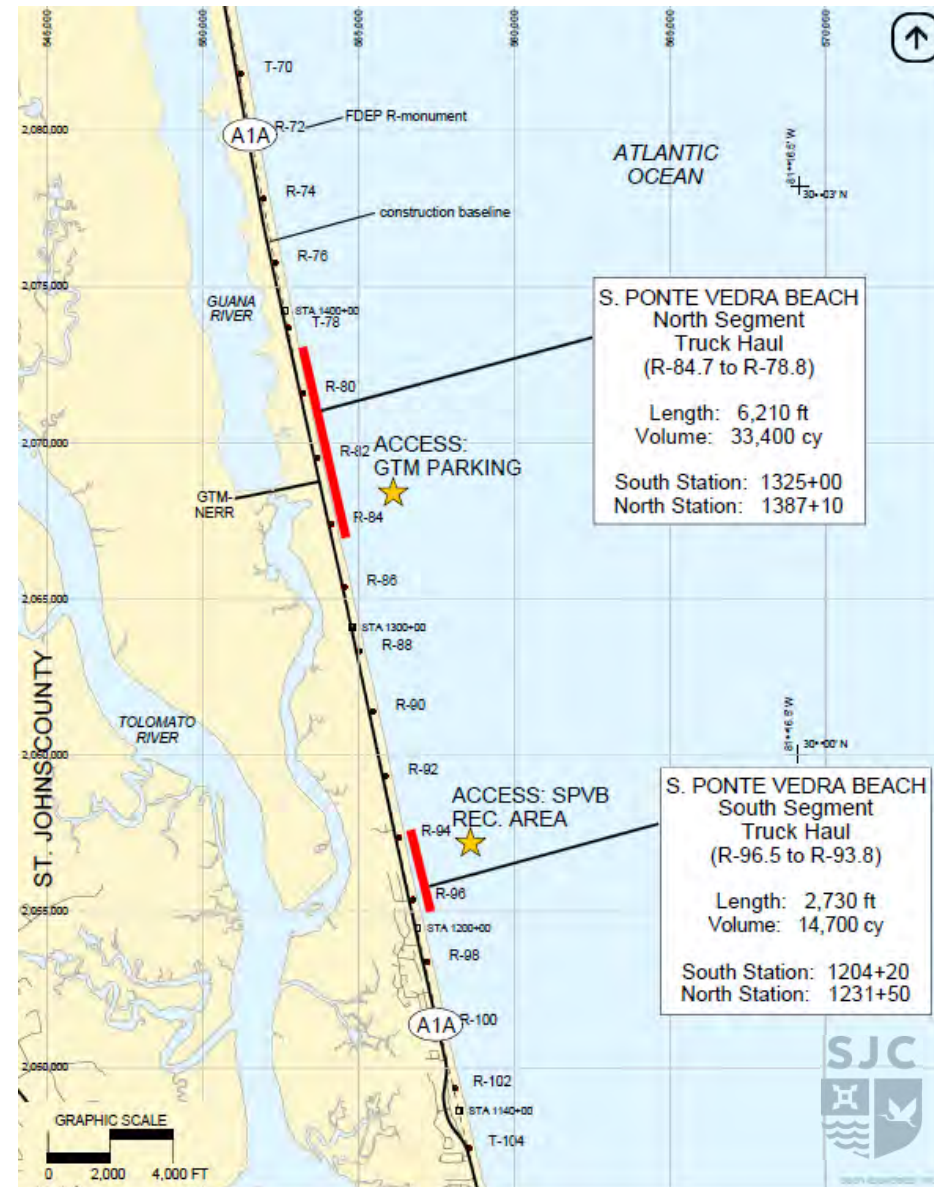
Background

- Funded by FEMA & State through Hurricanes Ian and Nicole funding.
- The St. Johns County Board of County Commissioners voted to approve the project on September 19, 2023.
- Hired Olsen Associates as Engineer for the project



Approved Project Areas

- North Segment (Exxon Access)
 - 6,210 ft
 - 33,400 cubic yards
- South Segment (SPV Park Access)
 - 2,730 ft
 - 14,700 cubic yards



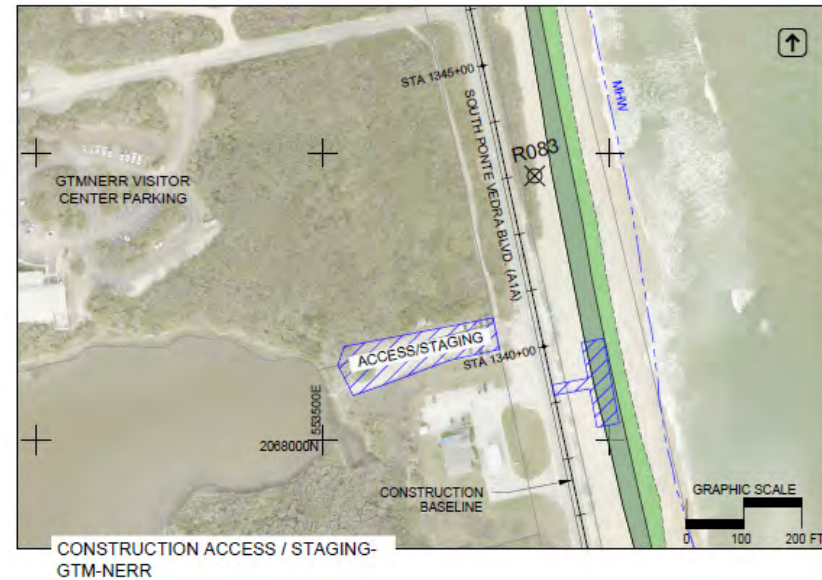
Project Details

- Construction Firm: Phillips and Jordan
- Truck haul project
- Sand trucked from Vulcan Mines in Keystone Heights to beach access
- Sand Placement will occur between 6:30 AM – 7 PM (After all clear from Turtle Patrol)
- Work will occur Monday through Saturday
- Mobilization to SPV Park on October 9th
- Followed by the Exxon section
- Crescent Beach in early November



Access and Staging

- SPV Park
October 9th
- Exxon Gas Station
October 18th (approx.)



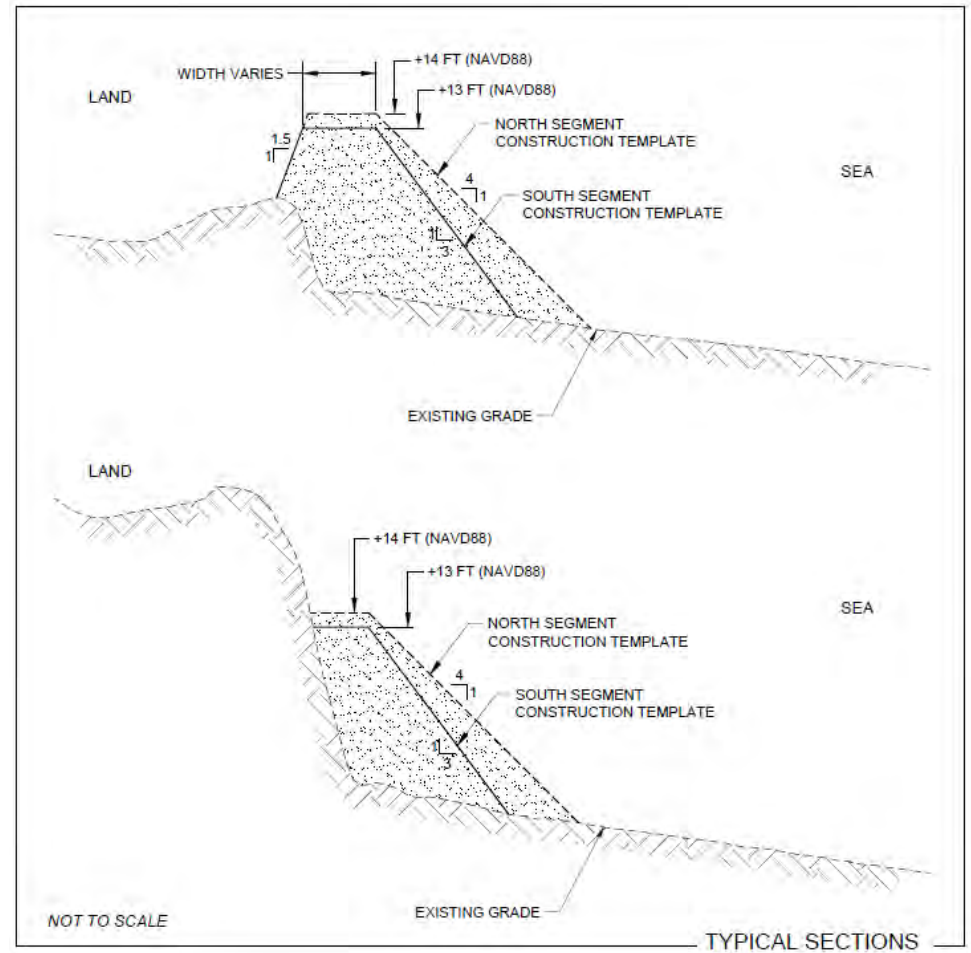
What Residents Can Expect

- Immediate areas where work is being completed on the beach will be closed to pedestrians.
- Expect closures at South PV Park and the Exxon Gas Station parking lot and beach access during construction over the next month.
- Construction vehicles will be traveling up and down the beach during construction.



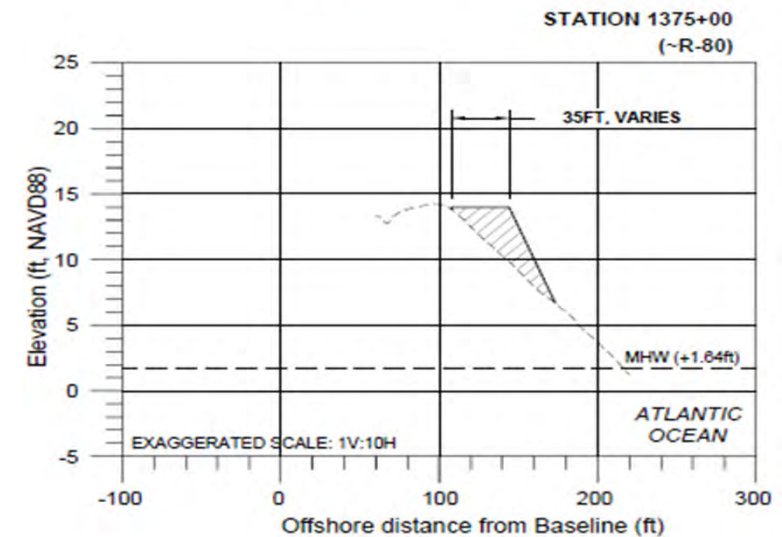
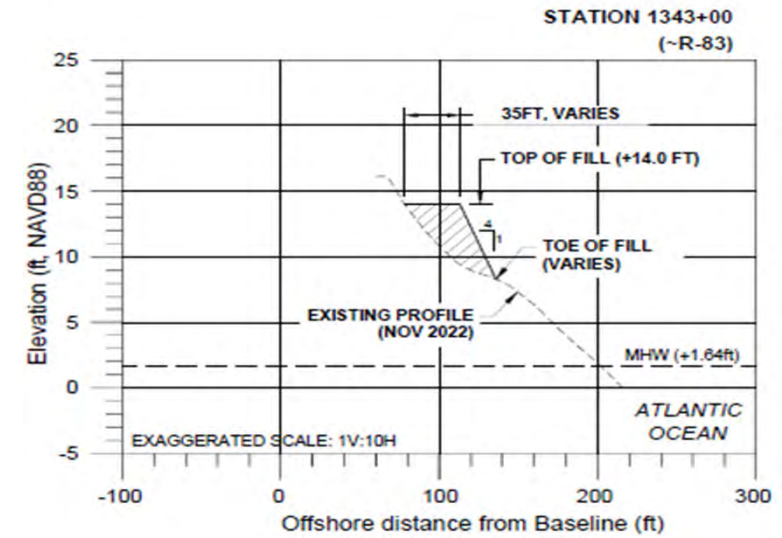
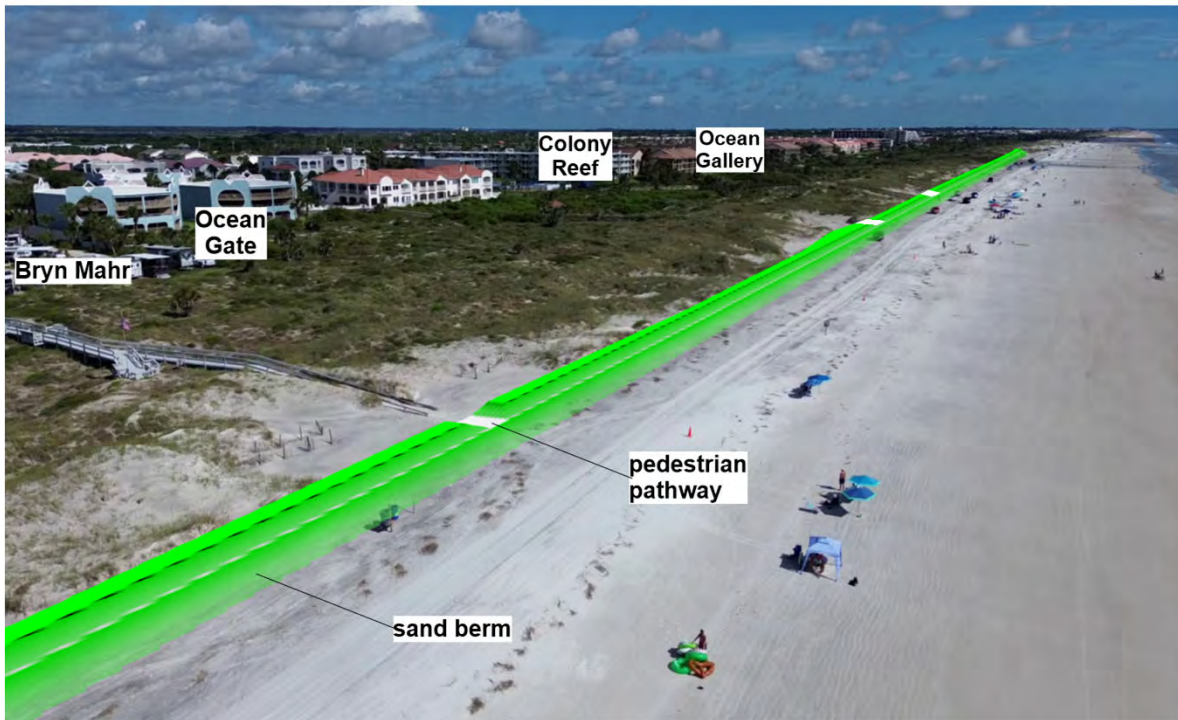
What Residents Can Expect

- Constructing a small dune feature
- Planted with sea oats
- Vibration Monitoring Equipment



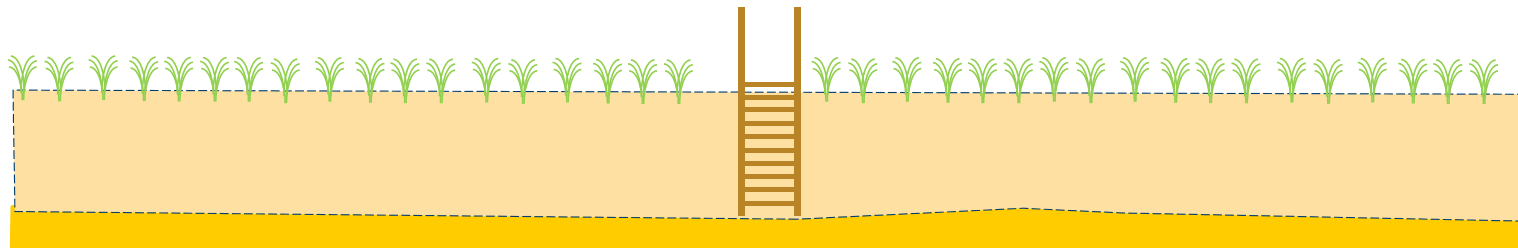
What Residents Can Expect

- Building a small dune feature



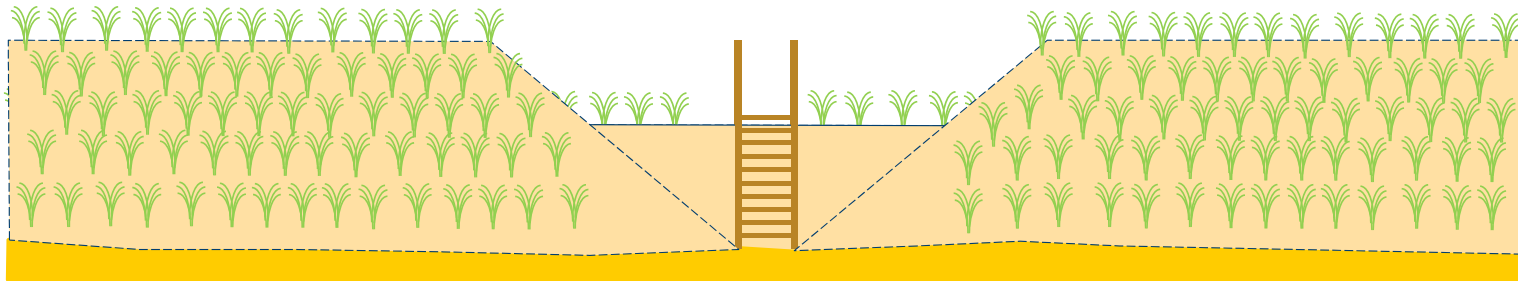
What Residents Can Expect

- Dune Walkover Example:



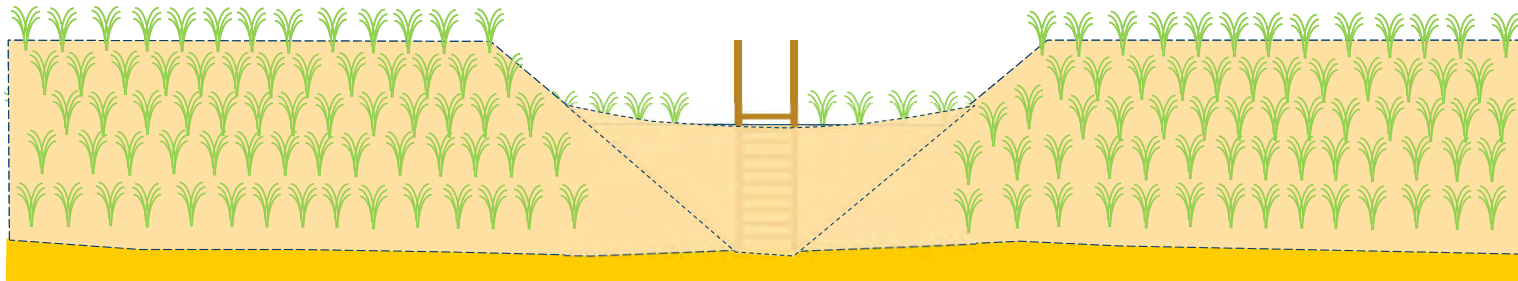
What Residents Can Expect

- Dune Walkover Example: Alternative 1



What Residents Can Expect

- Dune Walkover Example: Alternative 2



Final Product Example

- Recently completed the Butler Beach reach portion of the project



Summary

- Truck Haul Project
- Expect closures at South PV Park and the Exxon Gas Station parking lot and beach access during construction over the next month
- Expect work areas on the beach to be closed to pedestrians





Contact Information

Website: www.sjcfl.us/CoastalProjects

Email: coastalprojects@sjcfl.us

Phone: 904.209.0260

Beach Brief Newsletter

[https://lp.constantcontactpages.com/su/N3tmmZN
/TheBeachBrief](https://lp.constantcontactpages.com/su/N3tmmZN/TheBeachBrief)





Questions?

Thanks 😊



