



St. Johns County 2024



1

Growth &
Infrastructure

2

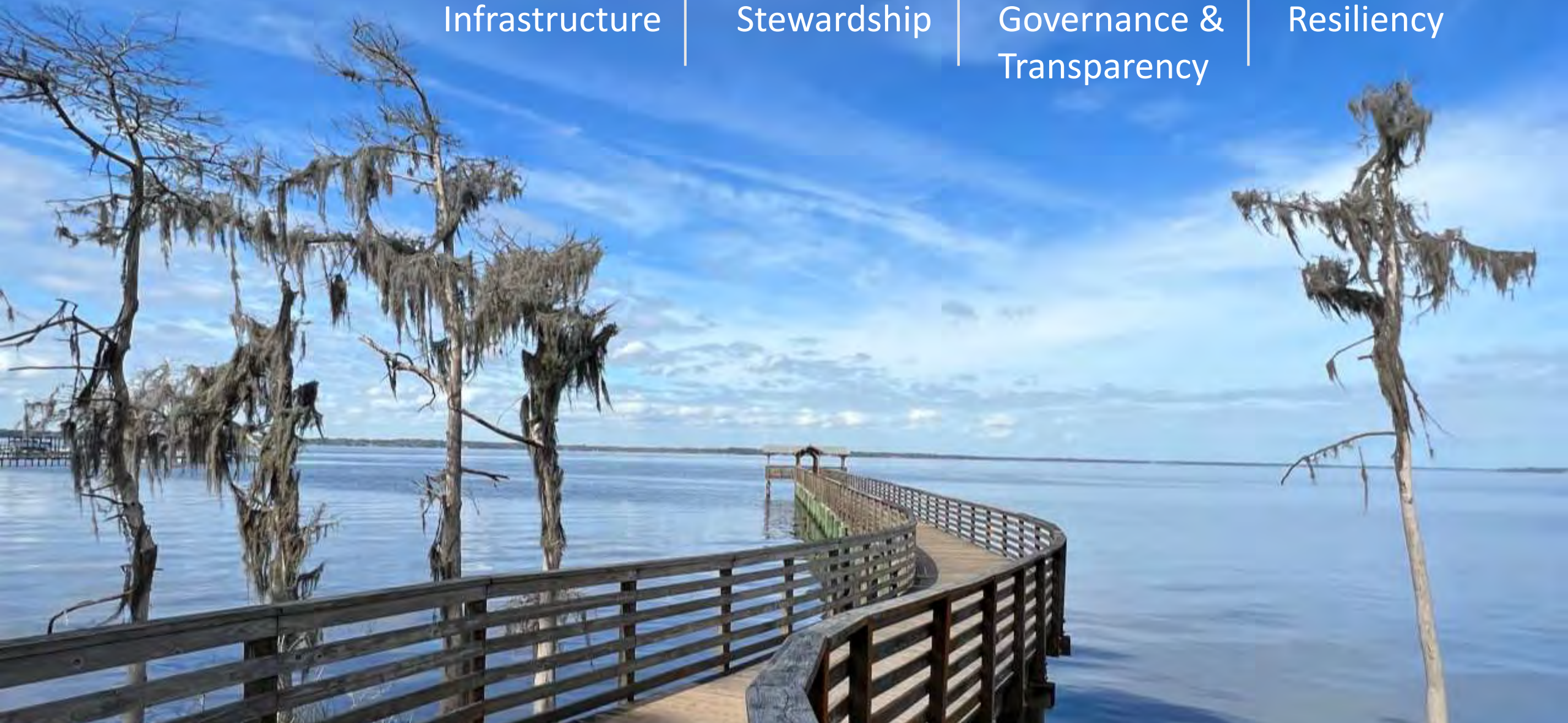
Financial
Stewardship

3

Open
Governance &
Transparency

4

Economic
Resiliency



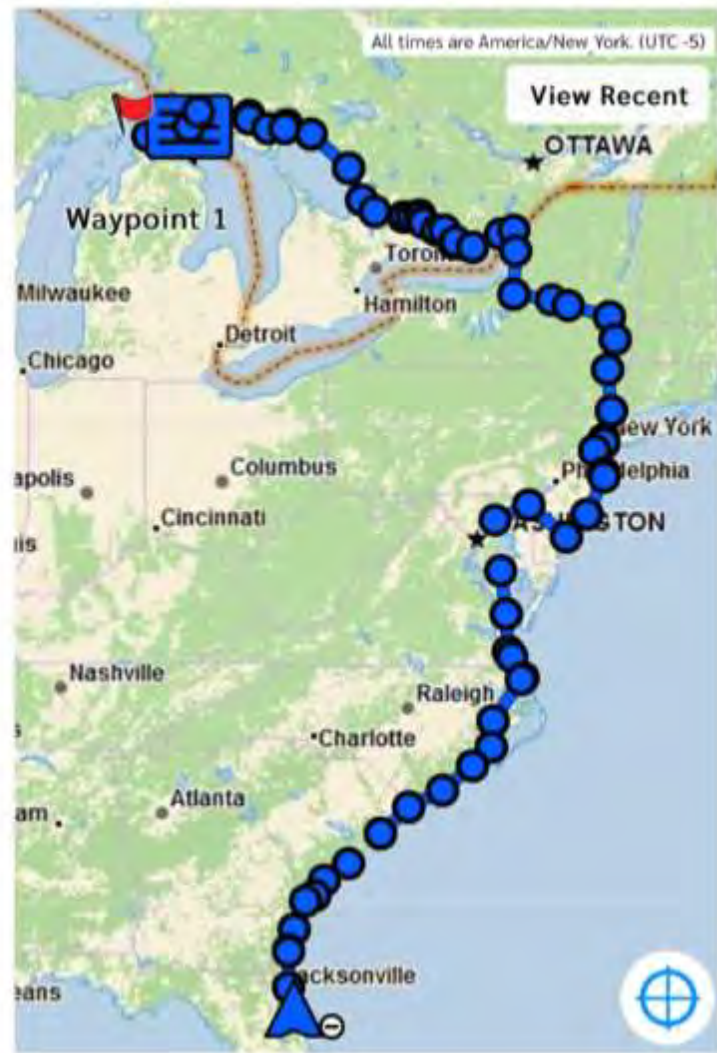
An aerial photograph of a landscape featuring a winding river, a network of roads, and various buildings. The image is overlaid with a semi-transparent dark blue filter. The text 'Growth & Infrastructure' is prominently displayed in white, bold, sans-serif font on the left side. A thin orange horizontal line is positioned below the text.

Growth & Infrastructure

Map

Message

★ Locate



Evolve and Grow - with Adaption and Vigor



SR 207 Water Reclamation Facility



117,341 acres

31% of total conservation area in
unincorporated St. Johns County

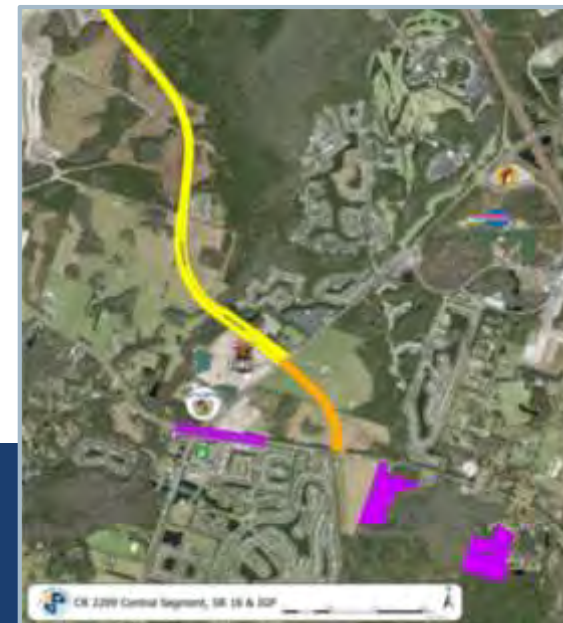
Combined Fire Station 11 and Sheriff's Southwest Operation Center



COUNTY ROAD 210 WIDENING



CR 2209 Extension and International Golf Parkway/SR16 Intersection



CR 2209 Extension and International Golf Parkway/SR16 Intersection



An aerial photograph showing a proposed road project. A multi-lane road runs diagonally from the bottom left towards the top right. The road is divided into two segments by a red dot. The segment closer to the bottom left is marked with yellow dashed lines, and the segment further up is marked with red dashed lines. To the left of the road, there is a large white building with a flat roof, a large parking lot filled with cars, and a baseball field. To the right of the road, there is a large green field, a small pond, and some industrial-looking structures. The background shows a dense forest and a body of water in the distance.

**CR 2209 Central Segment Phase 1
Silver Leaf Parkway to IGP**

**CR 2209 Central Segment Phase 2
IGP to State Road 16**



State Road 16 – Phase 1

Renderings of Four Regional Parks



ST. JOHNS COUNTY PARKS & RECREATION
10000 N. W. 10th Ave., Suite 100
Miami, FL 33150

CENTRAL ST. JOHNS SPORTSPLEX

OSPORTS

Catalyst

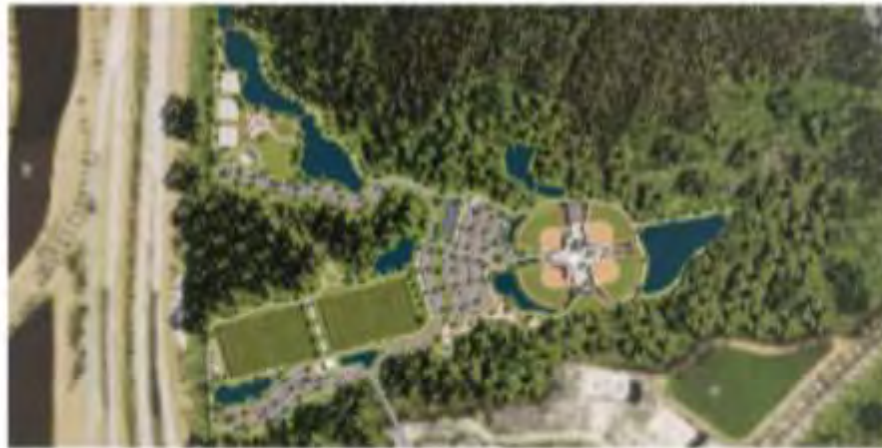


ST. JOHNS COUNTY PARKS & RECREATION
10000 N. W. 10th Ave., Suite 100
Miami, FL 33150

CENTRAL COMMUNITY PARK

OSPORTS

Catalyst



ST. JOHNS COUNTY PARKS & RECREATION
10000 N. W. 10th Ave., Suite 100
Miami, FL 33150

WESTLAKE COMMUNITY PARK

OSPORTS

Catalyst



ST. JOHNS COUNTY PARKS & RECREATION
10000 N. W. 10th Ave., Suite 100
Miami, FL 33150

WESTSIDE COMMUNITY PARK

OSPORTS

Catalyst



ST. JOHNS COUNTY
FOUR COUNTY PARKS MASTER PLAN
MASTER PLANNING DOCUMENTATION
MAY 4, 2023

EXECUTIVE SUMMARY

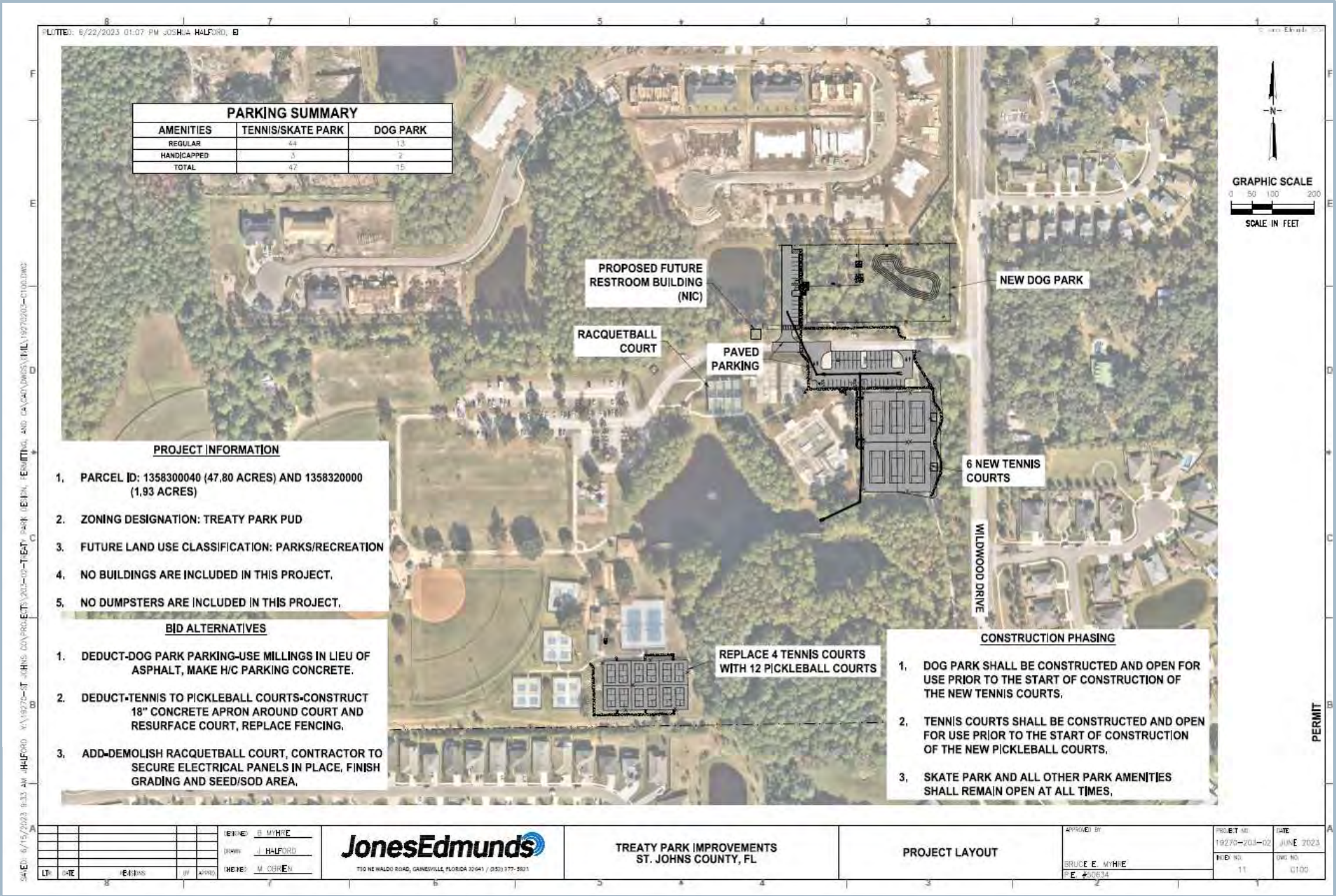
OSPORTS

Catalyst

Construction of Mill Creek Park



Treaty Park Renovations



Parks Replace and Repair Program



Financial Stewardship



Leverage Fed & State Funds

Secured a record \$59 million in state appropriations for the county in 2023, nearly five times the \$12.4 million the county received in 2022.

OFFICE OF INTERGOVERNMENTAL AFFAIRS

State & federal funds secured since the creation of the office in October, 2022.

\$63.4 M

STATE & FEDERAL
APPOPRIATIONS

\$27.5M

GRANTS AWARDED

millions

75

Hastings Community Center & Library



New Southwest First Coast Technical College Campus





Restoration of Alpine Grove Shoreline



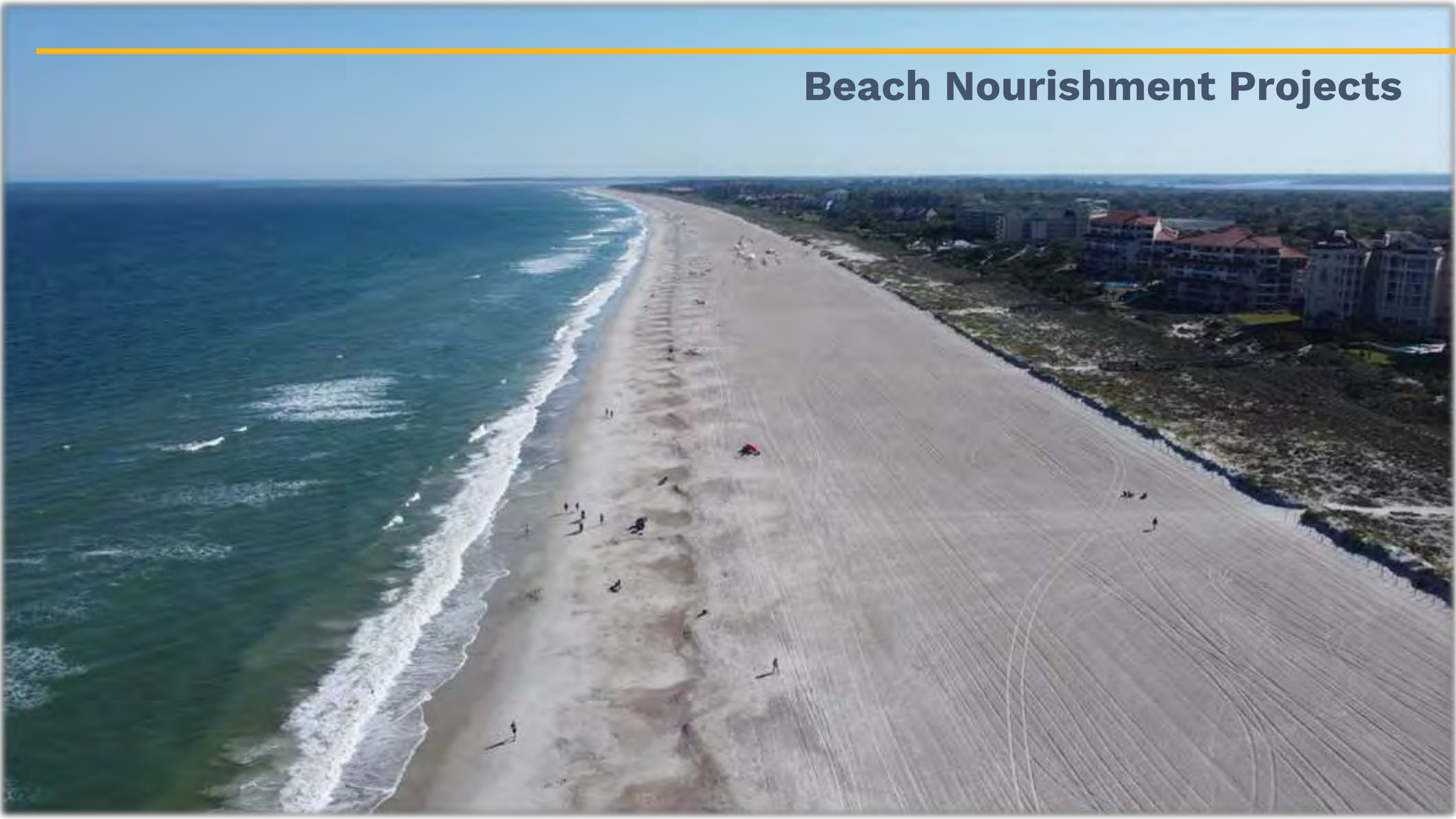
Restoration of Alpines Groves Shoreline



Beach Nourishment Projects



Beach Nourishment Projects



Beach Nourishment Projects





Palm Valley West Boat Ramp

Beach Walkover Improvements



Vilano Beachfront Park

Aerial View



Improve Insurance Services Office (ISO) Rating





Central public safety station

The Amp



The Amp



Ponte Vedra Concert Hall

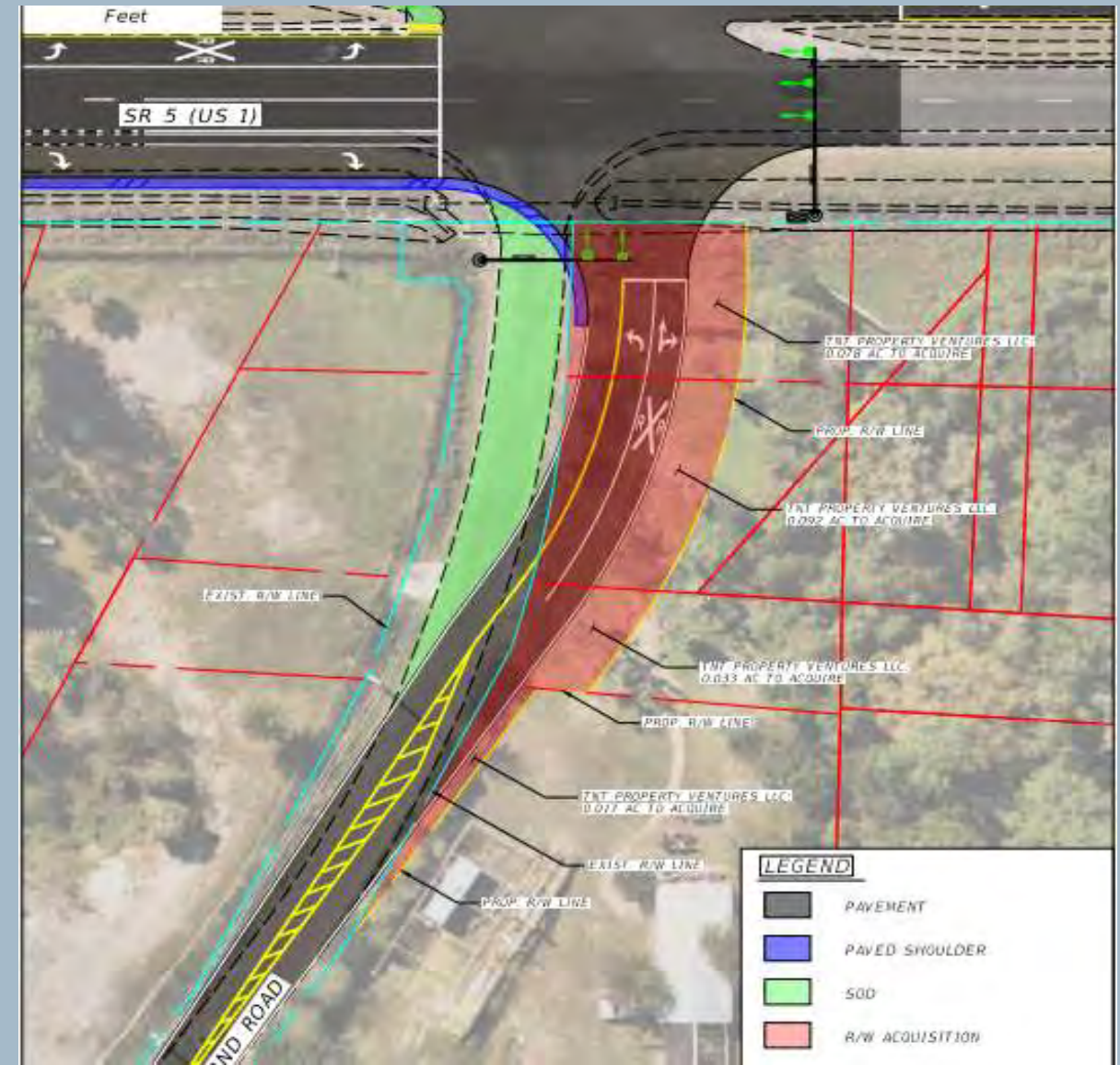


Fort Mose Jazz and Blues Series





Sing Out Loud Festival



Pine Island Road and U.S. 1 Intersection

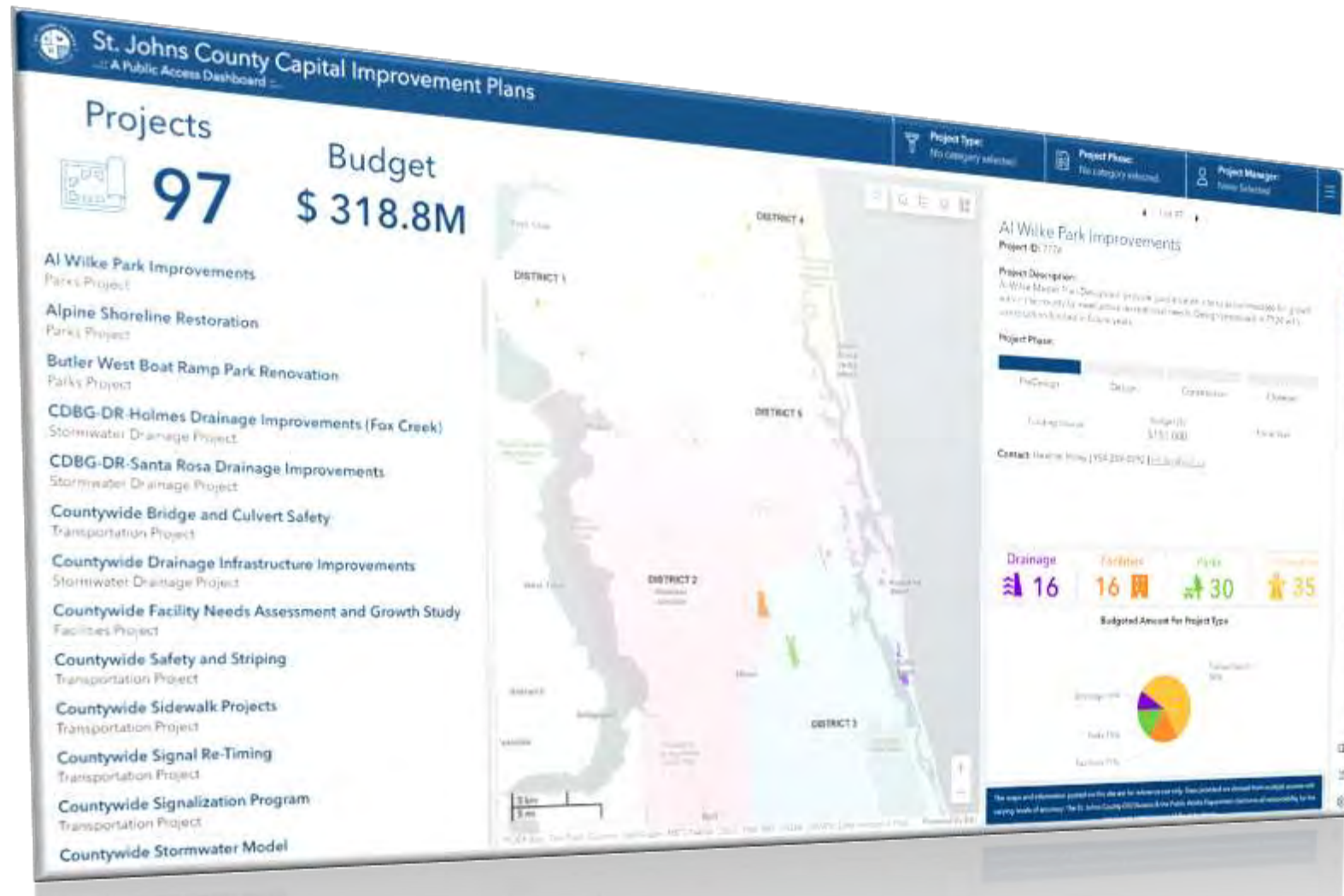
Summer Haven Managed Retreat Program



Open Governance & Transparency



Public Capital Improvement Dashboard



Budget Dashboard

 **St. Johns County**

powered by 

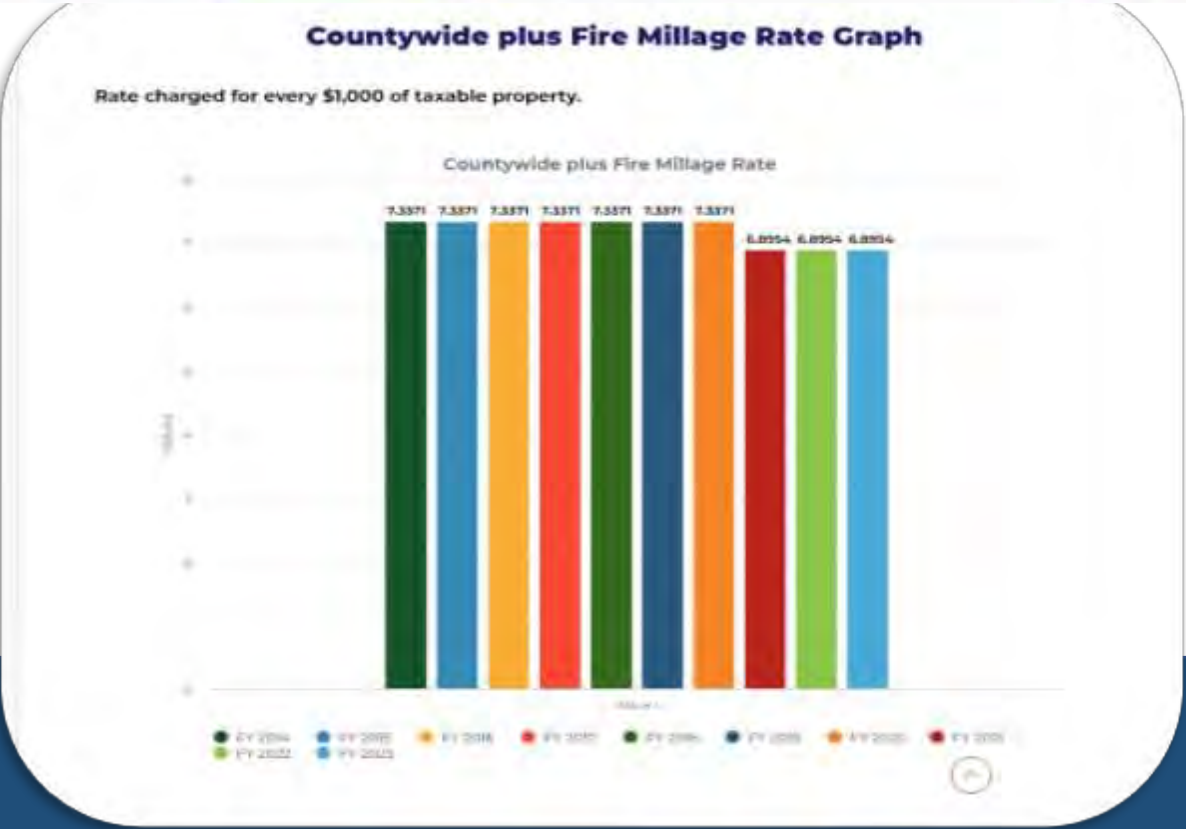


Fiscal Year 2024 Administrators Budget Workshop

Requested Version

[A Note To Our Readers](#) | [County Budget Summary](#) | [The Budget by Service Area](#)

[Print](#)



Enterprise Resource Planning (ERP)



New Budget Process



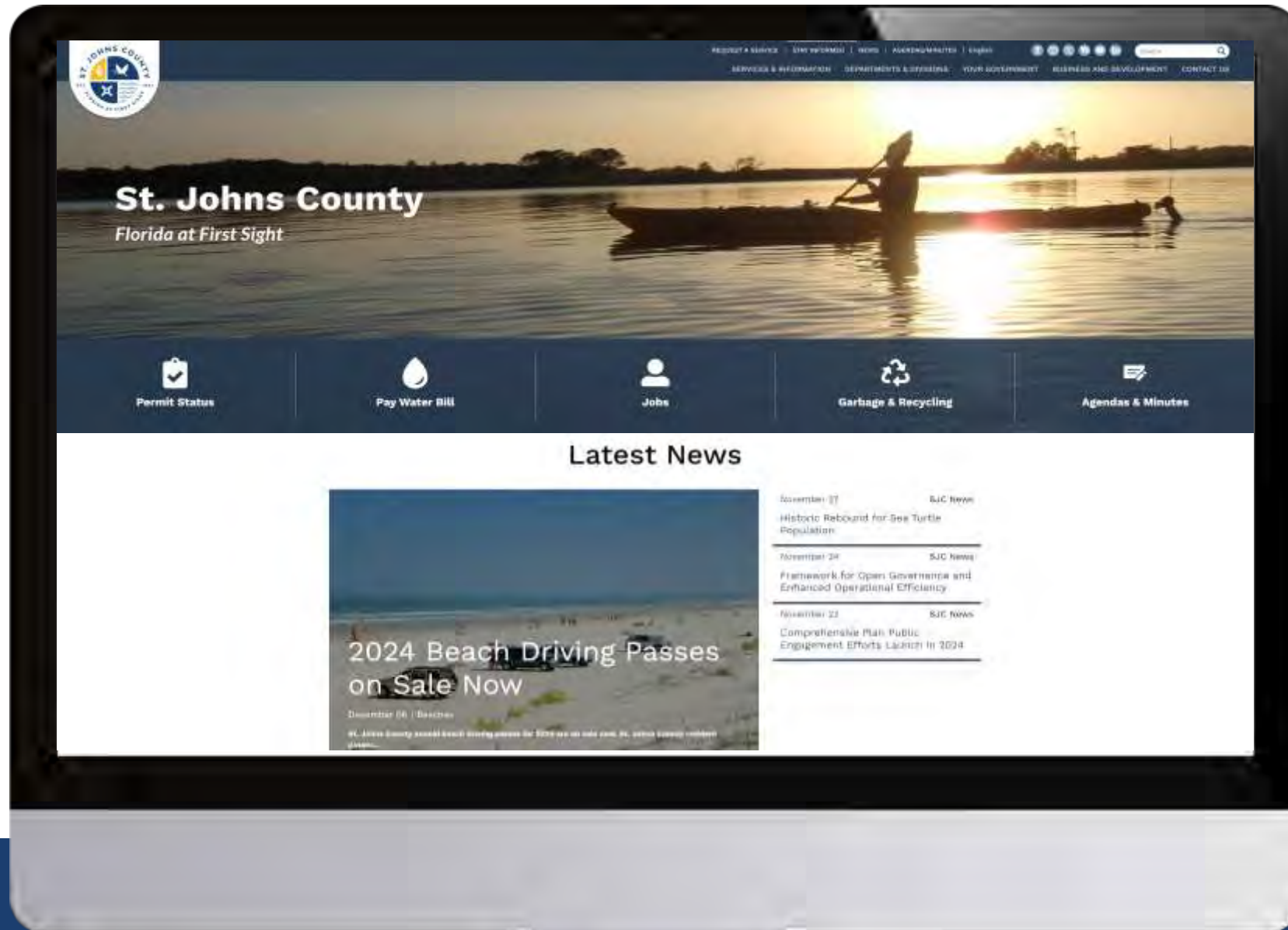
Design a roadmap for the future

planning type			
	Strategic	Comprehensive	Economic development
purpose	Assesses where an enterprise- or department-wide organization is now, sets a vision for where it wants to go, and defines how it will get there	A document designed to guide the future actions of a jurisdiction. It presents a vision for a community's future with long range goals, objectives, and policies	Creates a vision and road map to proactively guide growth and development through actionable policies and strategies
focus(es)	Organizational direction Resource alignment Collective impact and stewardship in decision-making, policies, plans, programs, and policies	Land use and zoning Population growth Housing Transportation/Mobility Economic development Environmental stewardship	Population fluctuations Job creation and retention Market stability Partnership and investment Workforce attraction and retention
lifespan	3 – 5 years	10 – 20 years	3 – 5 years

Authentic and Meaningful Public Engagement




County Website – Desktop



County Website – Mobile




County Newsletter – Desktop



**St. Johns
County**
FLORIDA AT FIRST SIGHT


February 2024 Newsletter



Headline
Subheading


Lorem ipsum dolor sit amet, consectetur adipiscing elit, sed & do eiusmod tempor incididunt ut labore et dolore magna aliqua.

Read More




**Christian
Whitehurst**

District 1 News



Sarah Arnold
Chair


District 2 News



Headline
Subheading

Lorem ipsum dolor sit amet, consectetur adipiscing elit, sed & do eiusmod tempor incididunt ut labore et dolore magna aliqua.






Read More



Headline
Subheading

Lorem ipsum dolor sit amet, consectetur adipiscing elit, sed & do eiusmod tempor incididunt ut labore et dolore magna aliqua.

Read More



Stay Informed | Privacy Policy

County Newsletter – Mobile



SJC Connect





Ongoing Input Opportunities



SCAN ME



#YourGovernment



www.sjcfl.us/sjc-strategic-plan



COMPREHENSIVE
PLAN UPDATE

#YourCounty



SCAN ME



SJCPlanUpdate.com



Economic Resiliency

UF Health Durbin Park



Publix Central Pharmaceutical Facility





The Team



Ryan Kane

Parks and Recreation



Brad Bradley

Deputy CA



Colin Groff

Deputy CA



Jesse Dunn

OMB

Joseph Giammanco

Emergency Management

Coastal Management



Angie Cowling

Chief of Staff



Neal Shinkre

Utility Director



Sarah Taylor

Chief Performance
Officer



Greg Caldwell

Public Works



Wayne Larson

Public Affairs



Sean McGee

Fire Chief



Tera Meeks

Tourism Development



Joseph McDermott

Veteran's Services



Jaime Locklear

Purchasing



Wendolyn Sneed

Medical Examiner



Corey Bowen

Land Management

Mike Roberson

Growth Management

Howard White

Building Official

Debra Gibson

Library System

Shawna Novak

HHS

Thank you

SJC



