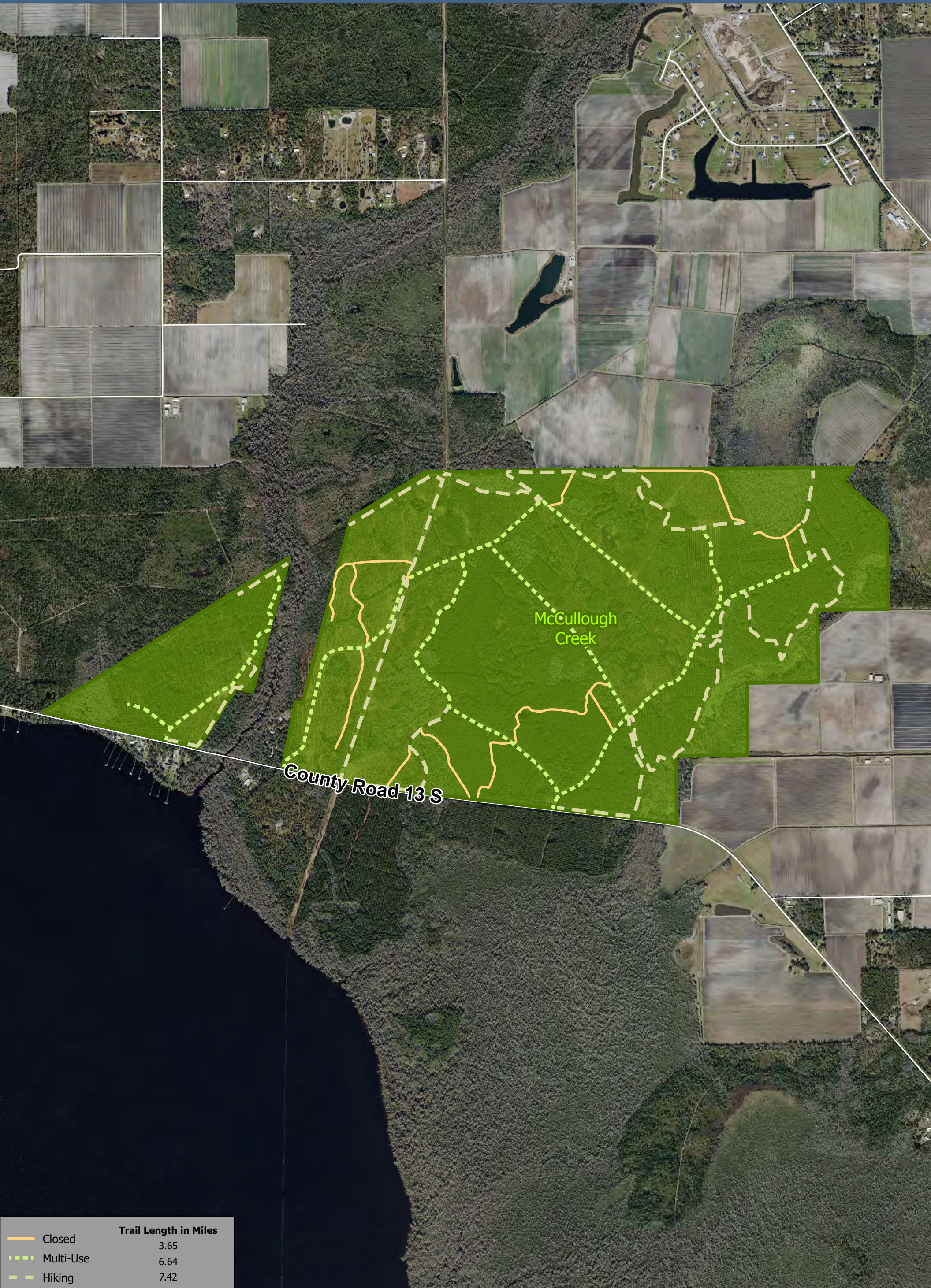




McCollough Creek



Trail Length in Miles	
Closed	3.65
Multi-Use	6.64
Hiking	7.42



Imagery Date: 2/2024
~
Date Prepared: 5/23/2025

DISCLAIMER:
This map is for reference use only. Data provided are derived from multiple sources with varying levels of accuracy. The St. Johns County GIS Division disclaims all responsibility for the accuracy or completeness of the data shown hereon.
j20621