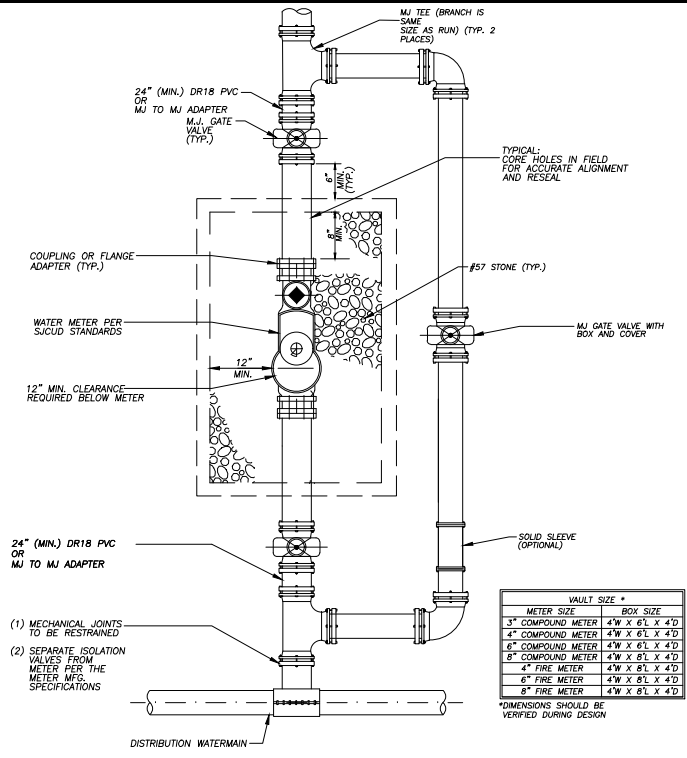


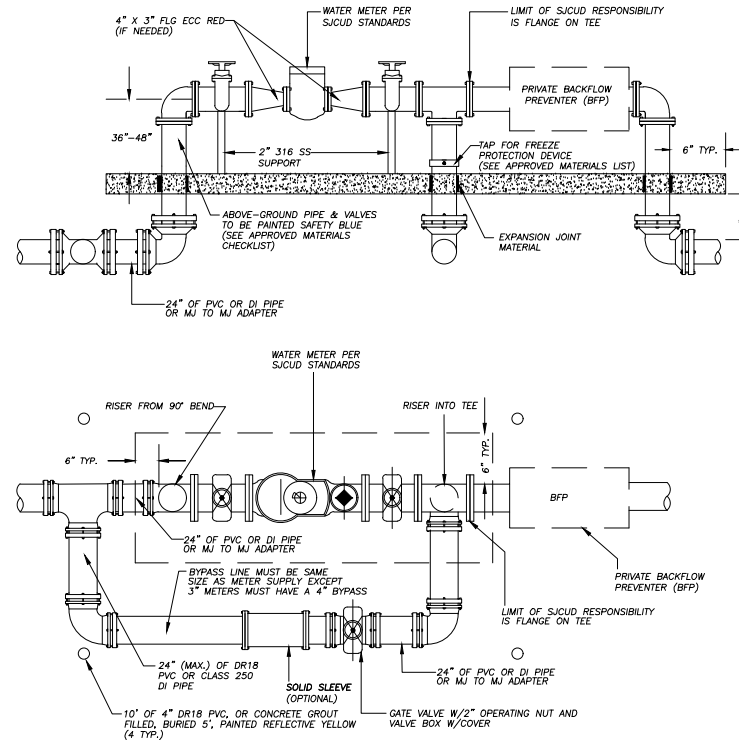
- NOTES:
1. THE CONTRACTOR SHALL BE RESPONSIBLE FOR THE REMOVAL OF ALL PIPING AND FITTINGS ABOVE CORPORATION STOP UPON RECEIPT OF SATISFACTORY BACTERIOLOGICAL CLEARANCE FROM FDEP.
 2. LOCATION OF ALL TAPS TO BE SHOWN ON AS-BUILTS.



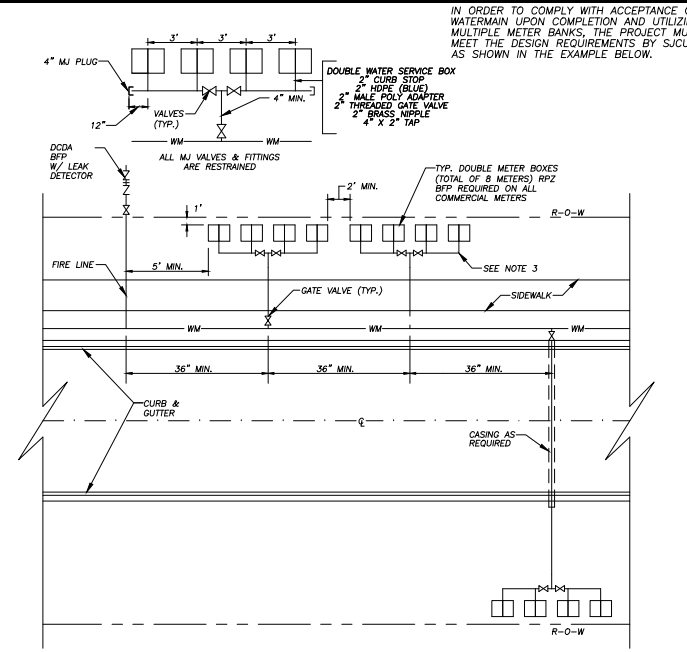
- NOTE:
1. VAULTS SHALL BE TRAFFIC RATED AND SHALL BE SIZED TO MEET THE MINIMUM SPACE DIMENSIONS NOTED ON THIS DETAIL.
 2. VAULT COVER SHALL BE #20 TRAFFIC RATED ALUMINUM COVER WITH HOLD OPEN ARM AS MANUFACTURED BY BILCO OR APPROVED EQUAL. VAULT COVERS LARGER THAN 24.36 SHALL BE DOUBLE LEAF. ALL COVERS SHALL HAVE A LIFT ASSIST MECHANISM.
 3. FOR METERS 5" OR LARGER, SUBMIT DETAIL DRAWINGS FOR APPROVAL.
 4. METER TO BE COVERED IN VAULT. BYPASS TO BE OUTSIDE OF VAULT.

METER SIZE	BOX SIZE
3" COMPOUND METER	4'W x 6'L x 4"D
4" COMPOUND METER	4'W x 6'L x 4"D
6" COMPOUND METER	4'W x 6'L x 4"D
8" COMPOUND METER	4'W x 6'L x 4"D
4" FIRE METER	4'W x 6'L x 4"D
6" FIRE METER	4'W x 6'L x 4"D
8" FIRE METER	4'W x 6'L x 4"D

*DIMENSIONS SHOULD BE VERIFIED DURING DESIGN



- NOTES:
1. BYPASS (TEES, BENDS, AND GATE VALVES) MUST BE SAME SIZE AS METER EXCEPT FOR 3" METER WHICH WILL HAVE A 4" BYPASS.
 2. ALL MECHANICAL JOINTS ARE RESTRAINED.
 3. CONCRETE SLAB MUST EXTEND AT LEAST 6" BEYOND PIPE IN EACH DIRECTION.



- NOTES:
1. NO WATERMAIN METER BOX OR VALVE TO BE CONSTRUCTED UNDER PAVED AREAS INCLUDING PARKING AREAS, DRIVEWAYS AND SIDEWALKS UNLESS PRIOR APPROVAL IS GRANTED BY SJCUD.
 2. FOR TAPS TO EXISTING MAINS USE APPROVED TAPPING SLEEVE OR SADDLE AND VALVE WITH BOX AND COVER.
 3. TO BE ASSEMBLED USING PACK JOINTS AND COMPRESSION FITTINGS. NO GLUED JOINTS OR TAPPED SINGLE LENGTH OF PIPE.
 4. SIZE OF PIPE BRANCHES SHALL BE DETERMINED BY THE ENGINEER AND BASED ON METER SIZES AND WATER DEMAND.
 5. IF RIGHT-OF-WAYS ARE NOT PLATTED, THEN EASEMENT AND RESTORATION AGREEMENT REQUIRED.
 6. FIRE LINE SERVICES SHALL BE SINGLE CONNECTIONS TO THE MAIN AND MUST INCLUDE REDUCED PRESSURE ZONE BACKFLOW PREVENTER (RPZ BFP) WITH LEAK DETECTOR, OR DOUBLE CHECK DETECTOR ASSEMBLY (DCCA) AS REQUIRED.
 7. METER BOXES AND/OR RPZ BFP TO BE MARKED WITH THE APPROVED E-911 ADDRESS AND UNIT NUMBER.

REVISIONS

Date	Comments
2025	REVISION 2
2020	REVISION 1

SJC ST. JOHNS COUNTY UTILITY DEPARTMENT
1205 STATE ROAD 16
ST. AUGUSTINE, FLORIDA 32084-8646
Phone: (904) 209-2700 • Fax: (904) 209-2702

3/4" TEMPORARY SAMPLE TAP ALONG PIPE
SCALE: N.T.S.

PLATE: W-9

REVISIONS

Date	Comments
2025	REVISION 2
2020	REVISION 1

SJC ST. JOHNS COUNTY UTILITY DEPARTMENT
1205 STATE ROAD 16
ST. AUGUSTINE, FLORIDA 32084-8646
Phone: (904) 209-2700 • Fax: (904) 209-2702

LARGE WATER METER INSTALLATION (BELOW GRADE)
SCALE: N.T.S.

PLATE: W-10A

REVISIONS

Date	Comments
2025	REVISION 2
2020	REVISION 1

SJC ST. JOHNS COUNTY UTILITY DEPARTMENT
1205 STATE ROAD 16
ST. AUGUSTINE, FLORIDA 32084-8646
Phone: (904) 209-2700 • Fax: (904) 209-2702

LARGE WATER METER INSTALLATION (ABOVE GROUND)
SCALE: N.T.S.

PLATE: W-10B

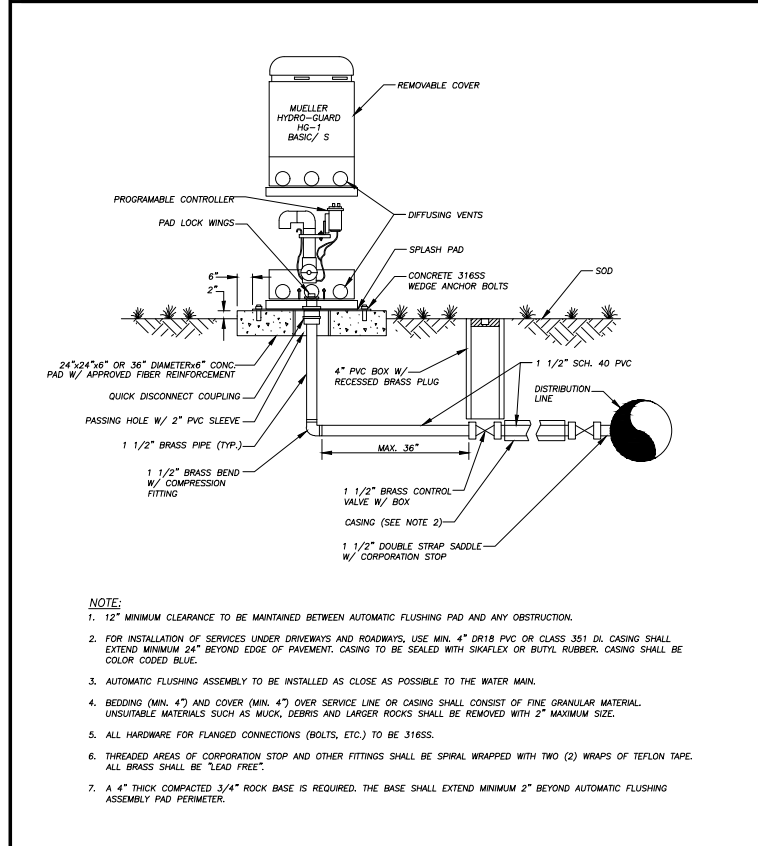
REVISIONS

Date	Comments
2025	REVISION 2
2020	REVISION 1

SJC ST. JOHNS COUNTY UTILITY DEPARTMENT
1205 STATE ROAD 16
ST. AUGUSTINE, FLORIDA 32084-8646
Phone: (904) 209-2700 • Fax: (904) 209-2702

TYPICAL MULTIPLE WATER METER BANK INSTALLATION
SCALE: N.T.S.

PLATE: W-11



- NOTE:
1. 12" MINIMUM CLEARANCE TO BE MAINTAINED BETWEEN AUTOMATIC FLUSHING PAD AND ANY OBSTRUCTION.
 2. FOR INSTALLATION OF SERVICES UNDER DRIVEWAYS AND ROADWAYS, USE MIN. 4" DR18 PVC OR CLASS 351 DI CASING SHALL EXTEND MINIMUM 24" BEYOND EDGE OF PAVEMENT. CASING TO BE SEALED WITH SIKAFLEX OR BUTYL RUBBER. CASING SHALL BE COLOR CODED BLUE.
 3. AUTOMATIC FLUSHING ASSEMBLY TO BE INSTALLED AS CLOSE AS POSSIBLE TO THE WATER MAIN.
 4. BEDDING (MIN. 4") OVER SERVICE LINE OR CASING SHALL CONSIST OF FINE GRANULAR MATERIAL. UNSUITABLE MATERIALS SUCH AS MUCK, DEBRIS AND LARGER ROCKS SHALL BE REMOVED WITH 2" MAXIMUM SIZE.
 5. ALL HARDWARE FOR FLANGED CONNECTIONS (BOLTS, ETC.) TO BE 316SS.
 6. THREADED AREAS OF CORPORATION STOP AND OTHER FITTINGS SHALL BE SPIRAL WRAPPED WITH TWO (2) WRAPS OF TEFLON TAPE. ALL BRASS SHALL BE "LEAD FREE".
 7. A 4" THICK COMPACTED 3/4" ROCK BASE IS REQUIRED. THE BASE SHALL EXTEND MINIMUM 2" BEYOND AUTOMATIC FLUSHING ASSEMBLY PAD PERIMETER.

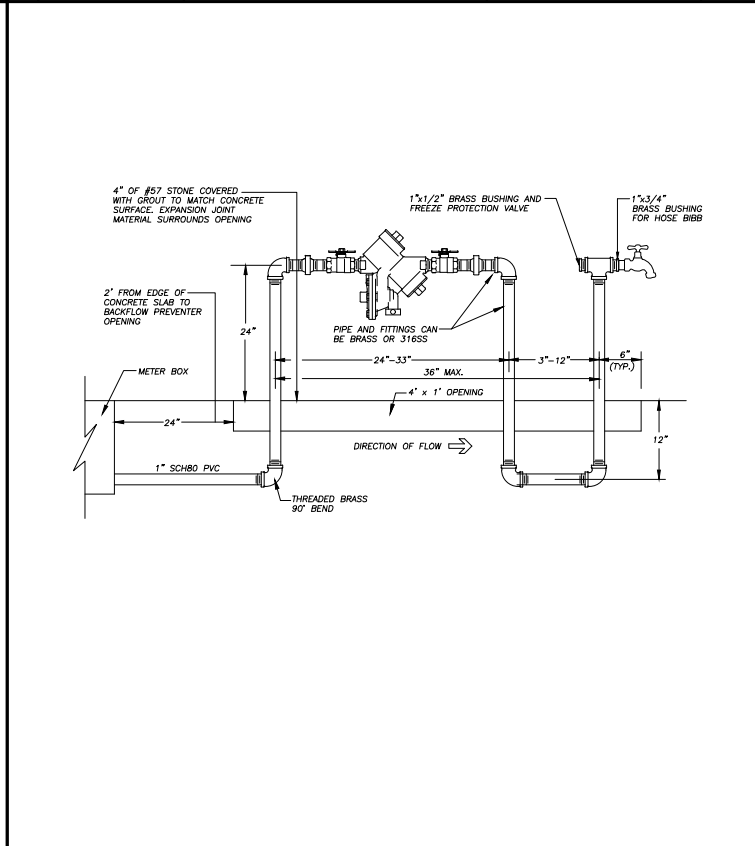
REVISIONS

Date	Comments
2025	REVISION 2
2020	REVISION 1

SJC ST. JOHNS COUNTY UTILITY DEPARTMENT
1205 STATE ROAD 16
ST. AUGUSTINE, FLORIDA 32084-8646
Phone: (904) 209-2700 • Fax: (904) 209-2702

AUTOMATIC FLUSHING ASSEMBLY (TYPE A)
SCALE: N.T.S.

PLATE: W-12



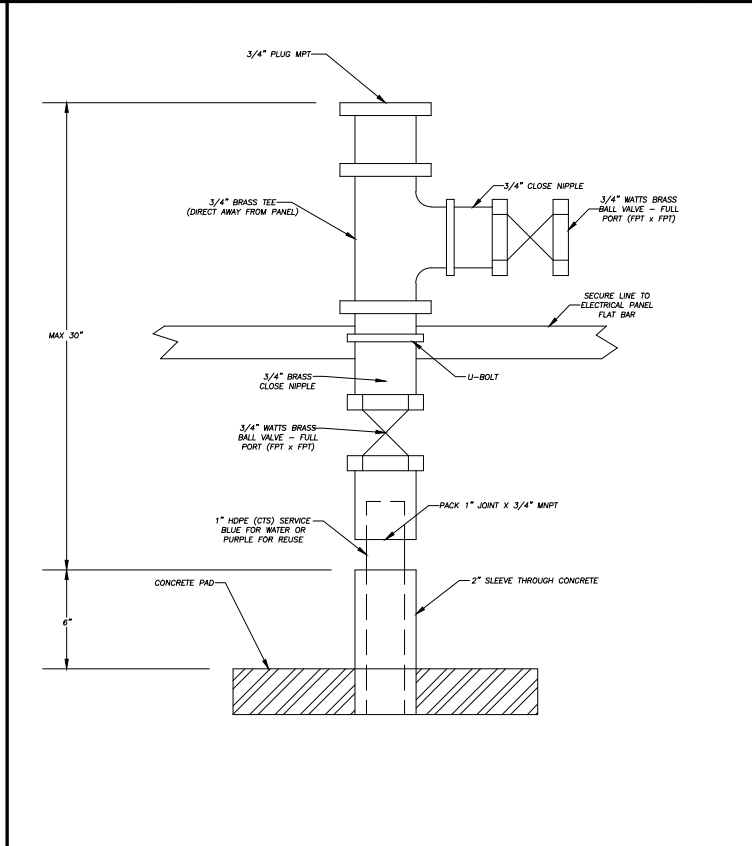
REVISIONS

Date	Comments
2025	REVISION 2
2020	REVISION 1

SJC ST. JOHNS COUNTY UTILITY DEPARTMENT
1205 STATE ROAD 16
ST. AUGUSTINE, FLORIDA 32084-8646
Phone: (904) 209-2700 • Fax: (904) 209-2702

BACKFLOW PREVENTER INSTALLATION DETAIL
SCALE: N.T.S.

PLATE: W-13



REVISIONS

Date	Comments
2025	REVISION 2
2020	REVISION 1

SJC ST. JOHNS COUNTY UTILITY DEPARTMENT
1205 STATE ROAD 16
ST. AUGUSTINE, FLORIDA 32084-8646
Phone: (904) 209-2700 • Fax: (904) 209-2702

STATIC POTABLE/ RECLAIMED WATER LINE CONNECTION
SCALE: N.T.S.

PLATE: W-14

NO.	BY	DATE	SYMBOL	REVISIONS	DESIGNER:	DESIGN ENGINEER	FLORIDA REGISTRATION NO.	NO. SHEETS
6.								
5.								
4.								
3.								
2.	SJCUD	2025		REVISION 2				
1.	SJCUD	2020		REVISION 1				

SJC ST. JOHNS COUNTY UTILITY DEPARTMENT
1205 STATE ROAD 16
ST. AUGUSTINE, FLORIDA 32084-8646
Phone: (904) 209-2700 • Fax: (904) 209-2702

WATER DETAILS

NO. SHEETS
SHEET NO.
DRAWING NO.
D-04