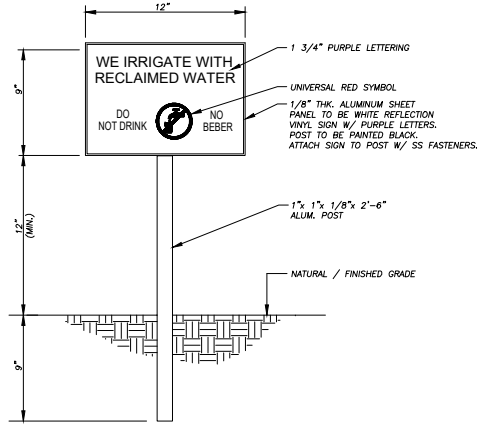


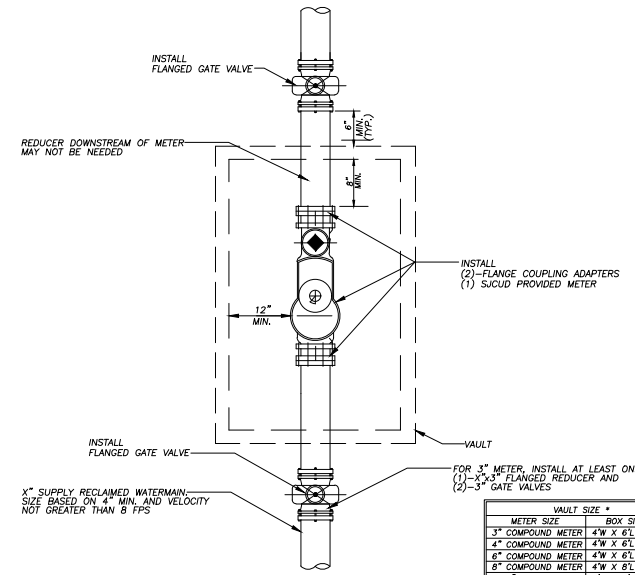
RECLAIMED WATER USE/WARNING SIGN

NOTE: EACH DEVELOPMENT, SUBDIVISION, OR COMMERCIAL ESTABLISHMENT, REGARDLESS OF THE NUMBER OF BUILDINGS, SHALL INSTALL RECLAIMED WATER USE WARNING SIGNS AT THE ENTRANCES TO ANY PROPERTIES WHICH USE RECLAIMED WATER. THE SIGNS SHALL MEET THE REQUIREMENTS OF SJCUD DETAILS AND SPECIFICATIONS. THE SIGNS SHALL BE A REQUIREMENT WHETHER SHOWN ON PLANS OR NOT. DIRECTION OF LOCATING SIGNS SHALL BE GIVEN BY THE SJCUD INSPECTOR ON SITE. LANDSCAPING SHOULD BE CONSIDERED WHEN PLACING SIGN.



RECLAIMED WATER USE/WARNING SIGN - DIMINUTIVE

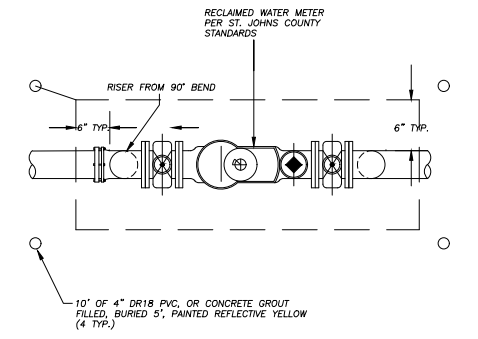
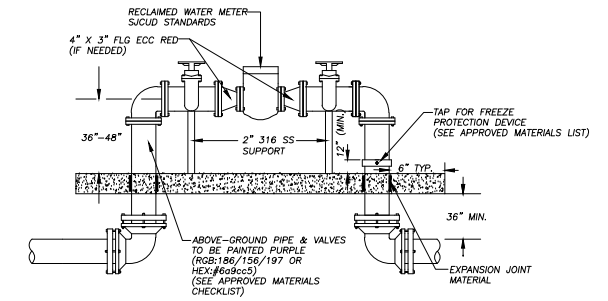
NOTE: EACH DEVELOPMENT, SUBDIVISION, OR COMMERCIAL ESTABLISHMENT, REGARDLESS OF THE NUMBER OF BUILDINGS, SHALL INSTALL DIMINUTIVE RECLAIMED WATER USE WARNING SIGNS ALONG SIDEWALKS, WALKING PATHS, AND ASSOCIATED AREAS WHERE STANDARD RECLAIMED WATER USE WARNING SIGNS ARE NOT PRACTICALLY VISIBLE DUE TO DISTANCE OR OTHER NON-VEGETATIVE OBSTRUCTION, OR NOT FEASIBLE. THE SIGNS SHALL MEET THE REQUIREMENTS OF SJCUD DETAILS AND SPECIFICATIONS. THE SIGNS SHALL BE A REQUIREMENT WHETHER SHOWN ON PLANS OR NOT. SIGNS SHALL BE CLEARLY VISIBLE TO RESIDENTS AND GUESTS ENTERING. PROMINENT TO CURB AND LANDSCAPING SHOULD BE CONSIDERED WHEN PLACING SIGN. SIGN SHALL BE TALLER THAN LANDSCAPING AND NOT BE BLOCKED BY FUTURE GROWTH OF VEGETATION OR DAMAGED BY MAINTENANCE EQUIPMENT. PUBLIC ACCESS COMMON AREAS SHALL ALSO HAVE SIGNS (INCLUDES OFFSITE).



METER SIZE	BOX SIZE
3" COMPOUND METER	4" W X 6" L X 4" D
4" COMPOUND METER	4" W X 6" L X 4" D
6" COMPOUND METER	4" W X 6" L X 4" D
8" COMPOUND METER	4" W X 8" L X 4" D
4" FIRE METER	4" W X 6" L X 4" D
6" FIRE METER	4" W X 8" L X 4" D
8" FIRE METER	4" W X 8" L X 4" D

*DIMENSIONS SHOULD BE VERIFIED DURING DESIGN

NOTE:
 1. METER SIZE SHALL BE THE SAME AS THE SUPPLY MAIN SIZE (EXCEPT 3" WHICH WILL HAVE A 4" MIN. SUPPLY MAIN).
 2. ALL MECHANICAL JOINTS ARE RESTRAINED.
 3. METER SHOULD SIT ON A CONCRETE BLOCK WITH OPEN CELLS FACING UP.
 4. VAULT SHALL BE MANUFACTURED BY ARMORCAST PRODUCTS AS LISTED IN THE APPROVED MATERIALS LIST OR SJCUD APPROVED EQUAL. ALL HARDWARE SHALL BE 316SS.



NOTES:
 1. ALL MECHANICAL JOINTS ARE RESTRAINED
 2. CONCRETE SLAB MUST EXTEND AT LEAST 6" BEYOND PIPE IN EACH DIRECTION

REVISIONS		ST. JOHNS COUNTY UTILITY DEPARTMENT 1205 STATE ROAD 16 ST. AUGUSTINE, FLORIDA 32084-8646 Phone: (904) 209-2700 • Fax: (904) 209-2702	RECLAIMED WATER USE/WARNING SIGN SCALE: N.T.S.	PLATE: R-1
Date	Comments			
2025	REVISION 2			
2020	REVISION 1			

REVISIONS		ST. JOHNS COUNTY UTILITY DEPARTMENT 1205 STATE ROAD 16 ST. AUGUSTINE, FLORIDA 32084-8646 Phone: (904) 209-2700 • Fax: (904) 209-2702	RECLAIMED WATER USE/WARNING SIGN - DIMINUTIVE SCALE: N.T.S.	PLATE: R-2
Date	Comments			
2025	REVISION 2			
2020	REVISION 1			

REVISIONS		ST. JOHNS COUNTY UTILITY DEPARTMENT 1205 STATE ROAD 16 ST. AUGUSTINE, FLORIDA 32084-8646 Phone: (904) 209-2700 • Fax: (904) 209-2702	STANDARD 3"-8" RECLAIMED WATER METER INSTALLATION SCALE: N.T.S.	PLATE: R-3A
Date	Comments			
2025	REVISION 2			
2020	REVISION 1			

REVISIONS		ST. JOHNS COUNTY UTILITY DEPARTMENT 1205 STATE ROAD 16 ST. AUGUSTINE, FLORIDA 32084-8646 Phone: (904) 209-2700 • Fax: (904) 209-2702	STANDARD 3"-8" RECLAIMED WATER METER INSTALLATION SCALE: N.T.S.	PLATE: R-3B
Date	Comments			
2025	REVISION 2			
2020	REVISION 1			

RECLAIMED WATER DETAILS